

MEMORANDUM

TO: Anthony M. Boccanfuso
Director

FROM: R. Steven Etheredge
Associate Director

DATE: June 7, 2001

RE: Report of Sponsored Program Activity for May 2001

The University received awards totaling \$11.2 million during the month, an increase of 32% compared to last May (\$8.5 million). Total funding for the year-to-date is \$108.8 million, an 11% increase over the same period last fiscal year.

Faculty submitted 167 proposals requesting \$19.7 million compared to 142 and \$20.7 million last May. Thus far in the fiscal year, SPAR has processed 1394 proposals requesting \$167.9 million, compared to last year's totals of 1469 and \$185.3 million.

cc: K. McCoy

Sponsored Programs and Research Monthly Report

SUMMARY OF AWARDS MAY - 2001

By Purpose

Research Awards - SPAR	\$7,144,426
Research Awards - SCRI	\$857,540
Training Awards	\$457,601
Service Awards	\$2,384,080
Equipment Awards	\$110,050
Graduate Assistantship Awards	\$278,713
TOTAL:	\$11,232,410

By Source

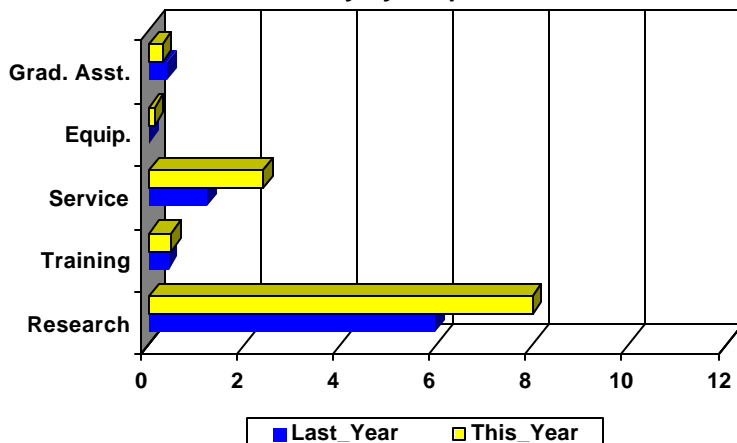
Federal Awards - SPAR	\$6,818,140
Federal Awards - SCRI	\$341,164
Private Awards - SPAR	\$1,377,017
Private Awards - SCRI	\$516,376
State Awards	\$2,179,713
TOTAL:	\$11,232,410

COMPARISON OF AMOUNT RECEIVED

MAY - 2001 vs. MAY - 2000

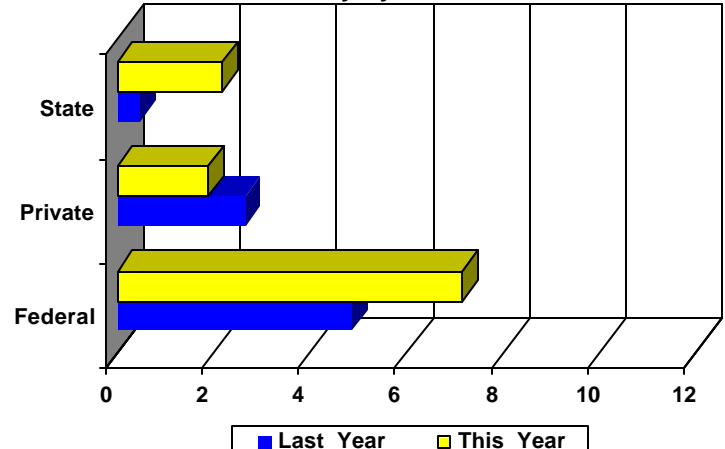
Amounts Received
(In millions of dollars)

Summary by Purpose



Amounts Received
(In millions of dollars)

Summary by Source



AWARDS BY DEPARTMENT

DEPARTMENT	CURRENT MONTH MAY - 2001		YEAR TO DATE FY 2001		YEAR TO DATE FY 2000	
Business and Finance						
Campus Services	0	\$0	2	\$12,000	1	\$10,000
Total :	0	\$0	2	\$12,000	1	\$10,000
College of Criminal Justice						
	0	\$0	7	\$808,428	8	\$227,886
Total :	0	\$0	7	\$808,428	8	\$227,886
College of Education						
Education	0	\$0	2	\$16,054	3	\$18,176
Education Leadership & Policies	0	\$0	12	\$498,535	13	\$314,123
Educational Psychology	4	\$249,719	10	\$585,531	8	\$307,383
Instruction & Teacher Education	4	\$152,613	24	\$2,450,753	14	\$1,959,856
Office of Research	0	\$0	1	\$14,295	2	\$23,395
Physical Education	1	\$850,585	3	\$1,272,785	4	\$337,250
SC Educational Policy Center	0	\$0	3	\$192,816	1	\$100,000
School Improvement Council Assistance	0	\$0	1	\$128,805	1	\$87,500
USC Children's Center	0	\$0	1	\$2,000	1	\$5,000
Total :	9	\$1,252,917	57	\$5,161,574	47	\$3,152,683
College of Engineering & Information						
Chemical Engineering	4	\$107,081	42	\$3,018,157	35	\$2,960,991
Civil & Environmental Engineering	3	\$136,857	20	\$1,867,847	26	\$1,791,030
Computer Science & Engineering	6	\$322,593	31	\$677,750	0	\$0
Electrical Engineering	3	\$640,276	19	\$13,352,263	20	\$8,153,461
Engineering & Information Technology, College of	1	\$1,932,630	4	\$2,206,492	5	\$2,870,011
IMS - Engineering	0	\$0	0	\$0	1	\$102,709
Mechanical Engineering	3	\$139,424	34	\$3,855,967	28	\$1,016,625
SCAMP	0	\$0	4	\$902,200	4	\$752,147
Total :	20	\$3,278,861	154	\$25,880,676	119	\$17,646,974
College of Hospitality, Retail & Sports						
Hospitality, Retail & Sports Mgmt - Dean's Office	1	\$25,000	4	\$90,500	4	\$67,700
Hotel, Restaurant & Tourism Administration	0	\$0	1	\$9,600	4	\$45,577
Sport Administration	0	\$0	1	\$13,000	0	\$0
Total :	1	\$25,000	6	\$113,100	8	\$113,277
College of Journalism & Mass						
	2	\$55,057	23	\$601,621	25	\$325,729
Total :	2	\$55,057	23	\$601,621	25	\$325,729
College of Liberal Arts						
African-American Studies Program	0	\$0	1	\$1,000	0	\$0
Anthropology	0	\$0	1	\$9,657	1	\$2,520
Archaeology & Anthropology, Institute of	4	\$153,614	14	\$1,345,727	14	\$1,852,600
Art	0	\$0	2	\$79,916	4	\$84,168
English	0	\$0	4	\$16,485	1	\$61,000
French & Classics	0	\$0	0	\$0	1	\$9,590
Geography	0	\$0	19	\$913,714	19	\$801,744
Government & International Studies	0	\$0	10	\$132,778	18	\$125,289

DEPARTMENT	CURRENT MONTH MAY - 2001		YEAR TO DATE FY 2001		YEAR TO DATE FY 2000	
History	2	\$86,511	24	\$202,156	21	\$120,989
Institute for Southern Studies	0	\$0	4	\$392,111	0	\$0
International Studies, Institute of	0	\$0	2	\$128,997	0	\$0
Liberal Arts Dean's Office	0	\$0	0	\$0	2	\$41,159
McKissick Museum	0	\$0	4	\$75,359	3	\$114,420
Naval Science	0	\$0	4	\$6,100	2	\$4,000
Philosophy	1	\$1,150	5	\$50,309	3	\$45,000
Psychology	4	\$985,584	37	\$2,752,436	40	\$3,635,731
Religious Studies	0	\$0	1	\$35,000	1	\$100,000
Sociology	1	\$7,500	6	\$227,773	10	\$320,427
Theatre, Speech & Dance	0	\$0	1	\$6,170	0	\$0
Trio Programs	1	\$439,568	6	\$1,585,794	9	\$1,195,700
Total :	13	\$1,673,927	145	\$7,961,482	149	\$8,514,337
College of Library & Information Science	1	\$10,000	5	\$51,028	8	\$126,435
Total :	1	\$10,000	5	\$51,028	8	\$126,435
College of Nursing						
Academic & Student Affairs	2	\$13,050	12	\$812,044	17	\$1,096,811
Administrative & Clinical Nursing	1	\$144,500	5	\$386,144	2	\$337,358
Family & Community Health Nursing	0	\$0	6	\$325,100	7	\$126,270
Total :	3	\$157,550	23	\$1,523,288	26	\$1,560,439
College of Pharmacy						
Basic Pharmaceutical Sciences	1	\$108,000	9	\$741,304	14	\$799,059
Clinical Pharmacy	0	\$0	4	\$100,000	7	\$142,020
Palmetto Poison Center	0	\$0	2	\$45,000	0	\$0
Pharmacy Practice	1	\$15,000	11	\$297,666	10	\$269,942
Total :	2	\$123,000	26	\$1,183,970	31	\$1,211,021
College of Science and Math						
Baruch Institute	4	\$94,118	24	\$1,643,759	21	\$979,327
Biological Sciences	6	\$317,425	47	\$3,067,722	52	\$4,207,129
Center For Science Education	0	\$0	3	\$104,695	1	\$7,500
Chemistry & Biochemistry	2	\$65,666	61	\$4,569,828	57	\$4,768,423
Computer Science	0	\$0	1	\$19,266	10	\$167,060
EPSCoR	0	\$0	7	\$211,885	32	\$1,557,024
Geological Sciences	2	\$39,098	30	\$1,520,335	44	\$2,858,092
Mathematics	2	\$66,606	12	\$646,971	8	\$809,403
Physics & Astronomy	5	\$936,861	23	\$2,847,599	25	\$2,501,096
Science & Math Administration	0	\$0	8	\$1,019,928	0	\$0
Statistics	2	\$21,117	19	\$581,872	13	\$369,776
Total :	23	\$1,540,891	235	\$16,233,860	263	\$18,224,830
College of Social Work	12	\$156,941	64	\$5,983,469	86	\$6,569,345
Total :	12	\$156,941	64	\$5,983,469	86	\$6,569,345
Darla Moore School of Business						
Business Administration - Division Of Research	5	\$45,098	57	\$845,698	45	\$933,809
Small Business Development Center	0	\$0	12	\$782,980	11	\$1,382,103
Total :	5	\$45,098	69	\$1,628,678	56	\$2,315,912

DEPARTMENT	CURRENT MONTH MAY - 2001		YEAR TO DATE FY 2001		YEAR TO DATE FY 2000	
Division of Student Affairs						
International Programs for Students	0	\$0	1	\$3,000	1	\$2,125
Student Health	0	\$0	1	\$5,000	3	\$292,110
Student Life	0	\$0	2	\$211,571	1	\$29,946
Total :	0	\$0	4	\$219,571	5	\$324,181
Earth Sciences & Resources Institute	0	\$0	7	\$3,211,459	20	\$514,602
Total :	0	\$0	7	\$3,211,459	20	\$514,602
English Program for Internationals						
English Program For Internationals	0	\$0	1	\$272,096	0	\$0
Total :	0	\$0	1	\$272,096	0	\$0
Institute for Families in Society						
Families in Society, Institute for	0	\$0	22	\$2,245,289	28	\$2,438,269
Total :	0	\$0	22	\$2,245,289	28	\$2,438,269
Institute of Public Affairs	4	\$641,131	38	\$1,840,405	36	\$1,913,177
Total :	4	\$641,131	38	\$1,840,405	36	\$1,913,177
Institutional Planning						
Instructional Services Center	0	\$0	0	\$0	1	\$26,518
Total :	0	\$0	0	\$0	1	\$26,518
Law School						
Law School	3	\$235,063	14	\$1,423,941	8	\$1,250,129
Total :	3	\$235,063	14	\$1,423,941	8	\$1,250,129
Norman J. Arnold School of Public Health						
Communication Sciences & Disorders	0	\$0	1	\$25,000	3	\$278,539
Environmental Health Sciences	5	\$131,105	34	\$1,700,804	25	\$2,142,684
Epidemiology & Biostatistics	1	\$46,839	26	\$2,442,163	31	\$2,728,268
Exercise Science	2	\$23,694	14	\$1,145,722	18	\$1,147,112
Health Administration	1	\$10,000	36	\$710,169	53	\$317,712
Health Promotion & Education	7	\$268,146	44	\$1,687,131	51	\$994,705
Norman J. Arnold School of Public Health - Dean	1	\$53,973	3	\$546,170	13	\$1,237,295
Prevention Research Center	0	\$0	22	\$2,461,456	33	\$3,612,825
Total :	17	\$533,757	180	\$10,718,615	227	\$12,459,140
Regional and Four-Year Campuses						
Regional Campuses & Continuing Education	0	\$0	1	\$32,100	0	\$0
USC Aiken	3	\$79,891	26	\$1,612,420	22	\$1,174,180
USC Beaufort	0	\$0	11	\$542,987	9	\$354,629
USC Lancaster	0	\$0	5	\$435,432	3	\$303,681
USC Salkehatchie	2	\$42,500	5	\$306,682	3	\$232,688
USC Spartanburg	6	\$51,821	51	\$1,697,901	71	\$1,712,262
USC Sumter	0	\$0	6	\$401,732	2	\$195,240

DEPARTMENT	CURRENT MONTH MAY - 2001		YEAR TO DATE FY 2001		YEAR TO DATE FY 2000	
USC Union	0	\$0	1	\$198,582	2	\$195,688
Total :	11	\$174,212	106	\$5,227,836	112	\$4,168,368
School of Medicine						
Biochemistry *	1	\$5,666	18	\$1,562,918	20	\$1,439,115
Cell Biology & Neurosciences	0	\$0	5	\$678,090	5	\$275,174
Computer and Communications Resources	0	\$0	0	\$0	1	\$30,000
Developmental Biology & Anatomy	0	\$0	9	\$1,038,060	9	\$1,104,921
Family & Preventive Medicine	1	\$10,997	6	\$860,323	11	\$670,766
Health & Safety	0	\$0	1	\$10,000	1	\$4,800
Internal Medicine	5	\$518,930	36	\$2,450,307	39	\$2,540,001
Microbiology & Immunology	2	\$437,887	7	\$1,109,748	3	\$370,897
Neuropsychiatry	2	\$150,214	11	\$537,979	24	\$600,885
Obstetrics & Gynecology	0	\$0	2	\$70,525	3	\$126,734
Orthopaedic Surgery	0	\$0	2	\$7,250	1	\$3,500
Pathology	0	\$0	4	\$244,554	5	\$294,843
Pediatrics/Center for Developmental Disabilities	0	\$0	28	\$3,174,109	26	\$4,570,593
Pharmacology & Physiology	2	\$13,470	10	\$227,691	5	\$188,798
Radiology	0	\$0	1	\$400,313	1	\$481,407
Research & Special Projects	1	\$104,350	8	\$775,152	13	\$825,055
School of Medicine - Dean's Office	0	\$0	0	\$0	1	\$2,000
School of Medicine Graduate Program	0	\$0	1	\$17,680	0	\$0
South Carolina Cancer Center	0	\$0	2	\$11,711	0	\$0
Surgery	0	\$0	1	\$7,500	1	\$7,692
Total :	14	\$1,241,514	152	\$13,183,910	169	\$13,537,181
School of Music						
	0	\$0	1	\$38,914	2	\$99,400
Total :	0	\$0	1	\$38,914	2	\$99,400
School of the Environment						
	1	\$93,157	6	\$443,607	5	\$1,173,446
Total :	1	\$93,157	6	\$443,607	5	\$1,173,446
South Carolina Honors College						
	0	\$0	1	\$6,000	3	\$23,826
Total :	0	\$0	1	\$6,000	3	\$23,826
University Libraries						
Libraries & Collections	0	\$0	1	\$1,666	0	\$0
Thomas Cooper Library	0	\$0	2	\$260,297	4	\$57,237
Total :	0	\$0	3	\$261,963	4	\$57,237
University Press						
	0	\$0	0	\$0	1	\$3,000
Total :	0	\$0	0	\$0	1	\$3,000
Vice President for Research						
EPSCoR	0	\$0	28	\$1,807,336	0	\$0
Sponsored Programs & Research	0	\$0	1	\$20,000	0	\$0
Vice President for Research	0	\$0	2	\$2,300,000	5	\$1,800,000
Total :	0	\$0	31	\$4,127,336	5	\$1,800,000

DEPARTMENT	CURRENT MONTH MAY - 2001		YEAR TO DATE FY 2001		YEAR TO DATE FY 2000	
Report TOTAL :	140	\$11,232,410	1364	\$108,801,198	1433	\$98,348,227

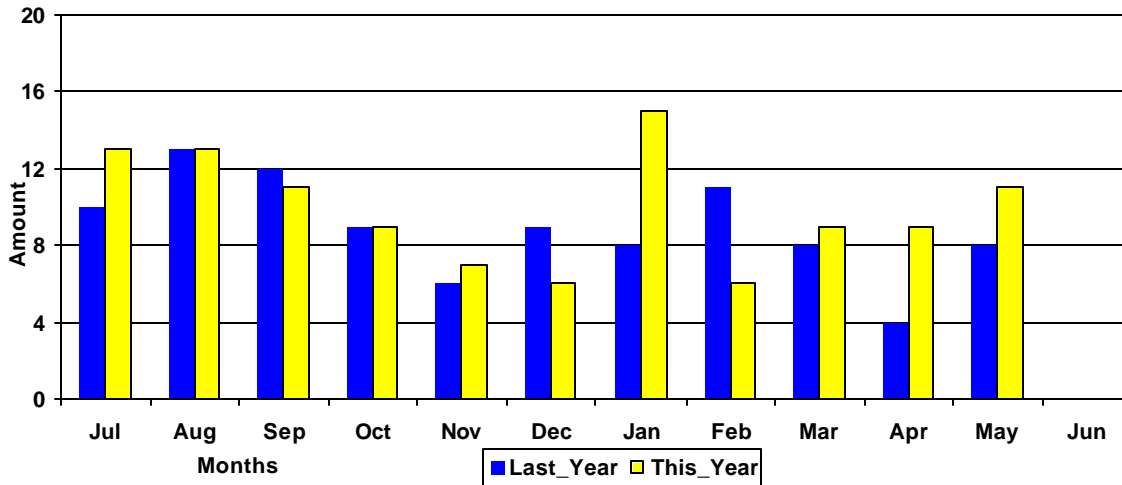
* - Biochemistry represents faculty with a dual appointment to the Department of Chemistry and the School of Medicine. The figures are included in both division totals but only once in the overall total.

Funding Agency Comparison Report

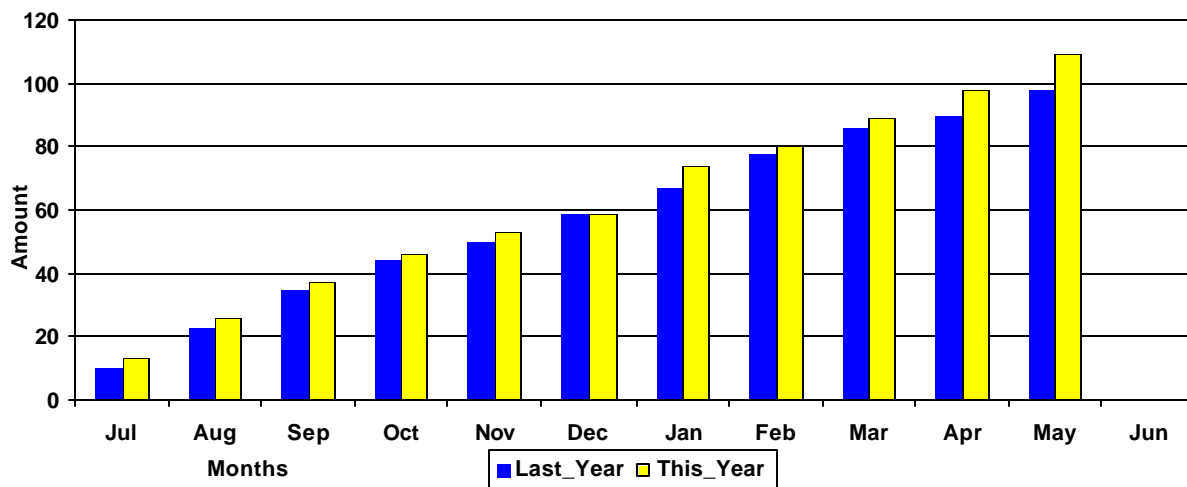
Year-To-Date -MAY - 2001

	<u>FISCAL YEAR - 2001</u>		<u>FISCAL YEAR - 2000</u>	
NSF Awards	104	\$7,650,299	109	\$8,265,753
NIH Awards	101	\$10,751,821	93	\$11,061,372
Dept. Of Defense Awards	70	\$19,918,881	54	\$12,052,218
Dept. Of Education Awards	76	\$9,282,660	57	\$7,015,137
Dept. Of Energy Awards	45	\$4,153,301	34	\$5,101,737
SCUREF Awards from DOE	12	\$1,179,687	14	\$1,127,822
State and Municipalities Awards	223	\$13,360,687	270	\$14,239,731

Amounts Awarded
(In millions of dollars)



Cumulative Amounts Awarded
(In millions of dollars)



PROPOSALS BY DEPARTMENT

DEPARTMENT	CURRENT MONTH MAY - 2001		YEAR TO DATE FY 2001		YEAR TO DATE FY 2000	
Business and Finance						
Campus Services	0	\$0	2	\$11,970	1	\$10,000
Facilities Planning/Energy Services	0	\$0	1	\$5,375	0	\$0
Total :	0	\$0	3	\$17,345	1	\$10,000
College of Criminal Justice						
	0	\$0	8	\$411,951	9	\$916,081
Total :	0	\$0	8	\$411,951	9	\$916,081
College of Education						
Education	1	\$50,000	2	\$77,500	3	\$424,580
Education Leadership & Policies	2	\$250,809	11	\$406,598	8	\$479,526
Educational Psychology	3	\$56,860	14	\$940,201	12	\$1,260,873
Instruction & Teacher Education	3	\$81,515	20	\$3,582,202	10	\$3,520,403
Office of Research	0	\$0	0	\$0	1	\$17,888
Physical Education	0	\$0	3	\$1,292,785	6	\$1,275,801
SC Educational Policy Center	0	\$0	2	\$92,816	0	\$0
School Improvement Council Assistance	0	\$0	0	\$0	3	\$96,900
USC Children's Center	0	\$0	2	\$32,000	0	\$0
Total :	9	\$439,184	54	\$6,424,102	43	\$7,075,971
College of Engineering & Information						
Chemical Engineering	7	\$850,785	51	\$10,174,643	58	\$10,156,223
Civil & Environmental Engineering	2	\$130,100	18	\$1,163,592	34	\$2,850,235
Computer Science & Engineering	6	\$424,417	36	\$2,210,707	0	\$0
Electrical Engineering	1	\$700,000	12	\$7,127,402	37	\$28,243,086
Engineering & Information Technology, College of	0	\$0	2	\$225,000	3	\$2,648,976
IMS - Engineering	0	\$0	0	\$0	3	\$1,046,653
Mechanical Engineering	6	\$152,743	48	\$4,572,372	70	\$6,681,661
SCAMP	0	\$0	2	\$812,000	2	\$610,000
Total :	22	\$2,258,045	169	\$26,285,716	207	\$52,236,834
College of Hospitality, Retail & Sports						
Center For Retailing Studies	1	\$11,429	1	\$11,429	2	\$246,818
Hospitality, Retail & Sports Mgmt - Dean's Office	0	\$0	1	\$25,000	2	\$62,300
Hotel, Restaurant & Tourism Administration	0	\$0	1	\$9,600	4	\$71,402
Sport Administration	0	\$0	1	\$13,000	1	\$50,000
Total :	1	\$11,429	4	\$59,029	9	\$430,520
College of Journalism & Mass						
	2	\$55,057	23	\$879,315	24	\$667,117
Total :	2	\$55,057	23	\$879,315	24	\$667,117
College of Liberal Arts						
African-American Studies Program	0	\$0	1	\$1,000	0	\$0
Anthropology	0	\$0	1	\$72,250	1	\$2,520
Archaeology & Anthropology, Institute of	2	\$110,215	14	\$1,509,782	18	\$2,119,031
Art	0	\$0	2	\$151,916	4	\$823,408
English	0	\$0	5	\$80,095	2	\$178,790
French & Classics	0	\$0	0	\$0	1	\$9,989

DEPARTMENT	CURRENT MONTH MAY - 2001		YEAR TO DATE FY 2001		YEAR TO DATE FY 2000	
Geography	1	\$41,540	12	\$634,388	11	\$852,896
Government & International Studies	0	\$0	7	\$208,167	14	\$173,030
History	0	\$0	15	\$214,956	15	\$251,085
Institute for Southern Studies	0	\$0	1	\$262,040	1	\$49,061
International Studies, Institute of	0	\$0	1	\$37,946	1	\$130,795
Linguistics Program	0	\$0	2	\$41,892	0	\$0
McKissick Museum	0	\$0	5	\$127,255	7	\$89,486
Philosophy	1	\$1,150	3	\$20,979	3	\$296,762
Psychology	2	\$33,221	40	\$9,094,413	38	\$7,454,656
Religious Studies	0	\$0	1	\$35,000	0	\$0
Sociology	0	\$0	7	\$242,003	6	\$311,354
Spanish, Italian, & Portuguese	0	\$0	1	\$49,941	0	\$0
Theatre, Speech & Dance	0	\$0	1	\$6,170	0	\$0
Trio Programs	6	\$1,337,449	8	\$1,705,146	4	\$1,305,191
Total :	12	\$1,523,575	127	\$14,495,339	126	\$14,048,054
College of Library & Information Science	1	\$10,000	7	\$151,136	9	\$224,514
Total :	1	\$10,000	7	\$151,136	9	\$224,514
College of Nursing						
Academic & Student Affairs	0	\$0	6	\$479,600	2	\$304,578
Administrative & Clinical Nursing	1	\$86,003	6	\$249,003	4	\$467,974
Family & Community Health Nursing	2	\$129,796	7	\$2,614,351	6	\$1,106,109
Total :	3	\$215,799	19	\$3,342,954	12	\$1,878,661
College of Pharmacy						
Basic Pharmaceutical Sciences	1	\$72,250	19	\$2,020,353	11	\$1,940,247
Clinical Pharmacy	0	\$0	4	\$136,428	3	\$118,000
Palmetto Poison Center	1	\$196,924	3	\$330,881	0	\$0
Pharmacy Practice	1	\$15,000	11	\$417,781	4	\$114,680
Total :	3	\$284,174	37	\$2,905,443	18	\$2,172,927
College of Science and Math						
Baruch Institute	12	\$1,471,238	39	\$3,583,267	40	\$4,479,818
Biological Sciences	8	\$1,537,398	74	\$9,075,201	89	\$7,648,272
Center For Science Education	0	\$0	4	\$132,986	2	\$32,423
Chemistry & Biochemistry	6	\$2,633,175	80	\$14,997,109	65	\$15,137,743
Computer Science	0	\$0	0	\$0	10	\$390,949
EPSCoR	0	\$0	1	\$40,000	16	\$3,270,570
Geological Sciences	11	\$772,108	56	\$6,405,458	51	\$5,990,791
Mathematics	0	\$0	16	\$912,610	15	\$1,088,458
Physics & Astronomy	1	\$146,000	28	\$8,219,605	23	\$7,434,458
Science & Math Administration	0	\$0	8	\$1,574,443	0	\$0
Statistics	0	\$0	15	\$520,191	20	\$450,412
Total :	38	\$6,559,919	321	\$45,460,870	331	\$45,923,894
College of Social Work	16	\$572,532	75	\$8,470,683	70	\$2,471,313
Total :	16	\$572,532	75	\$8,470,683	70	\$2,471,313
Darla Moore School of Business						
Business Administration - Division Of Research	4	\$91,612	52	\$926,309	33	\$359,422

DEPARTMENT	CURRENT MONTH MAY - 2001		YEAR TO DATE FY 2001		YEAR TO DATE FY 2000	
Small Business Development Center	1	\$150,000	5	\$2,687,838	5	\$1,342,109
Total :	5	\$241,612	57	\$3,614,147	38	\$1,701,531
Division of Student Affairs						
International Programs for Students	0	\$0	0	\$0	1	\$4,250
Student Health	0	\$0	4	\$606,435	5	\$848,172
Student Life	0	\$0	2	\$153,362	1	\$99,955
Total :	0	\$0	6	\$759,797	7	\$952,377
Earth Sciences & Resources Institute						
	3	\$404,209	10	\$4,084,601	24	\$1,636,459
Total :	3	\$404,209	10	\$4,084,601	24	\$1,636,459
English Program for Internationals						
English Program For Internationals	0	\$0	1	\$232,149	0	\$0
Total :	0	\$0	1	\$232,149	0	\$0
Equal Opportunity Programs						
	0	\$0	0	\$0	1	\$20,000
Total :	0	\$0	0	\$0	1	\$20,000
Institute for Families in Society						
Families in Society, Institute for	0	\$0	19	\$3,239,937	23	\$2,085,255
Total :	0	\$0	19	\$3,239,937	23	\$2,085,255
Institute of Public Affairs						
	2	\$114,749	38	\$2,330,835	48	\$3,168,721
Total :	2	\$114,749	38	\$2,330,835	48	\$3,168,721
Institutional Planning						
Law Enforcement & Safety						
	0	\$0	2	\$67,528	1	\$253,597
Total :	0	\$0	2	\$67,528	1	\$253,597
Law School						
Law School	0	\$0	11	\$1,332,522	8	\$930,091
Total :	0	\$0	11	\$1,332,522	8	\$930,091
Norman J. Arnold School of Public Health						
Communication Sciences & Disorders	0	\$0	1	\$199,011	9	\$557,955
Environmental Health Sciences	1	\$11,295	21	\$1,720,990	23	\$3,024,910
Epidemiology & Biostatistics	1	\$19,379	35	\$5,996,337	38	\$4,226,647
Exercise Science	0	\$0	16	\$1,130,198	21	\$4,002,175
Health Administration	2	\$44,991	36	\$272,195	56	\$953,793
Health Promotion & Education	6	\$402,634	39	\$2,094,364	55	\$1,324,481
Norman J. Arnold School of Public Health - Dean	2	\$859,630	4	\$2,197,730	12	\$2,531,615
Prevention Research Center	10	\$1,249,451	21	\$2,161,859	14	\$2,517,242
Total :	22	\$2,587,380	173	\$15,772,684	228	\$19,138,817
Office of the Provost						
	0	\$0	0	\$0	1	\$96,240

DEPARTMENT	CURRENT MONTH MAY - 2001		YEAR TO DATE FY 2001		YEAR TO DATE FY 2000	
Total :	0	\$0	0	\$0	1	\$96,240
Regional and Four-Year Campuses						
Regional Campuses & Continuing Education	0	\$0	0	\$0	1	\$32,100
USC Aiken	5	\$504,064	24	\$2,265,668	20	\$1,354,699
USC Beaufort	1	\$1,200	13	\$970,382	13	\$413,465
USC Lancaster	0	\$0	3	\$370,165	1	\$11,993
USC Salkehatchie	2	\$75,266	8	\$555,934	5	\$521,134
USC Spartanburg	3	\$280,956	31	\$1,881,261	45	\$1,537,954
USC Sumter	0	\$0	6	\$962,900	3	\$393,824
USC Union	0	\$0	1	\$299,376	1	\$215,232
Total :	11	\$861,486	86	\$7,305,686	89	\$4,480,401
School of Medicine						
Animal Resources Facility	0	\$0	1	\$128,159	0	\$0
Biochemistry *	3	\$485,936	10	\$1,939,816	11	\$2,113,856
Cell Biology & Neurosciences	0	\$0	5	\$749,684	4	\$772,278
Developmental Biology & Anatomy	0	\$0	18	\$2,479,255	20	\$2,585,765
Family & Preventive Medicine	0	\$0	7	\$871,363	13	\$2,966,054
Health & Safety	0	\$0	1	\$10,000	1	\$6,700
Internal Medicine	0	\$0	6	\$907,244	8	\$423,273
Medicine Library	0	\$0	1	\$4,850	0	\$0
Microbiology & Immunology	1	\$252,875	6	\$1,142,012	9	\$1,435,499
Neuropsychiatry	2	\$534,515	9	\$1,393,855	9	\$598,147
Obstetrics & Gynecology	1	\$66,043	3	\$203,043	4	\$202,993
Ophthalmology	1	\$159,576	1	\$159,576	0	\$0
Orthopaedic Surgery	0	\$0	0	\$0	1	\$12,500
Pathology	0	\$0	9	\$1,416,259	9	\$930,680
Pediatrics/Center for Developmental Disabilities	4	\$962,242	16	\$1,848,338	19	\$3,895,547
Pharmacology & Physiology	2	\$222,450	18	\$1,635,406	15	\$2,012,025
Radiology	0	\$0	1	\$400,313	0	\$0
Research & Special Projects	1	\$104,350	2	\$124,350	2	\$261,403
School of Medicine - Dean's Office	0	\$0	0	\$0	1	\$106,551
School of Medicine Graduate Program	0	\$0	2	\$17,680	0	\$0
South Carolina Cancer Center	0	\$0	2	\$11,711	0	\$0
Surgery	1	\$60,676	4	\$257,316	3	\$209,150
Total :	16	\$2,848,663	122	\$15,700,230	129	\$18,532,421
School of Music	0	\$0	1	\$41,564	2	\$560,765
Total :	0	\$0	1	\$41,564	2	\$560,765
School of the Environment	2	\$215,952	16	\$2,341,467	6	\$3,186,848
Total :	2	\$215,952	16	\$2,341,467	6	\$3,186,848
South Carolina Honors College	0	\$0	4	\$155,939	8	\$305,045
Total :	0	\$0	4	\$155,939	8	\$305,045
University Libraries						
Libraries & Collections	0	\$0	2	\$7,350	0	\$0
Thomas Cooper Library	2	\$1,005,738	4	\$1,173,636	6	\$506,875
Total :	2	\$1,005,738	6	\$1,180,986	6	\$506,875

DEPARTMENT	CURRENT MONTH MAY - 2001		YEAR TO DATE FY 2001		YEAR TO DATE FY 2000	
University Press	0	\$0	1	\$10,000	0	\$0
Total :	0	\$0	1	\$10,000	0	\$0
Vice President for Research						
EPSCoR	0	\$0	3	\$732,658	0	\$0
Sponsored Programs & Research	0	\$0	0	\$0	1	\$20,000
Vice President for Research - General	0	\$0	1	\$2,000,000	1	\$1,800,000
Total :	0	\$0	4	\$2,732,658	2	\$1,820,000
Report TOTAL :	167	\$19,723,568	1394	\$167,856,795	1469	\$185,317,472

* - Biochemistry represents faculty with a dual appointment to the Department of Chemistry and the School of Medicine. The figures are included in both division totals but only once in the overall total.