



**MEMORANDUM**

To: Harris Pastides, Ph.D.  
 Interim Vice President for Research

From: Anthony M. Boccanfuso, Ph.D.  
 Managing Director

RE: Report of Sponsored Program Activity for September 2002

Date: October 15, 2002

The University received awards totaling \$11.5 million during the month, an eight percent (8%) decrease from last September (\$12.5 million). **For 1<sup>st</sup> quarter of FY2003, award dollars are twenty-four (24%) ahead from last year, \$37.9 million vs. \$30.6 million.**

Faculty submitted 147 proposals requesting \$16.1 million during September. For 1<sup>st</sup> quarter of FY2003, SPAR has processed 454 proposals requesting \$46.5 million, compared to last year's totals of 390 and \$34 million.

	September FY03	YTD FY02	YTD FY03	YTD Change
Award Dollars	\$11,491,903	\$30,644,123	\$37,897,419	23.67%
Research Expenditures	\$4,530,393	\$14,903,166	\$14,007,705	(6%)
Research IDC Recovered	\$1,264,782	\$4,040,541	\$4,142,611	-
Proposals Submitted	147	390	454	16.4%
Proposal Dollars Requested	\$16,094,621	\$33,950,553	\$46,487,914	36.9%

**Notable Changes in Activity**

	<u>YTD 02</u>	<u>YTD 03</u>
Engineering & Information Technology	\$2,825,021	\$5,107,040
Liberal Arts, College of	\$1,401,521	\$3,584,443
Medicine, School of	\$4,417,486	\$5,311,682
Science and Mathematics, College of	\$5,560,060	\$7,935,180

cc: Jerome D. Odom, Ph.D.  
 R. Steven Etheredge  
 Richard Kelly

## September Featured Awards

### Engineering & Information Technology, College of

#### *Electrical Engineering*

**Khan, Asif**

*Manufacturing and Lifetime Testing of Novel Insulating Gate GaN-A1GaN FET Devices and Circuits - (FA15)* **\$2,000,000**  
USCRF/US Army Space & Missile Defense Command/DOD

### Families in Society, Institute for

#### *Families in Society, Institute for*

**Flerx, Vicki**

*Domestic Violence Services in Rural Health Care Clinics - (FA13)* **\$221,810**  
USCRF/University of Texas/NIH

### Mass Communications & Information Studies,

#### *Journalism & Mass Communications, School of*

**Bierbauer, Charles**

*Basic Communications Training (Fall 2002) - (FL15)* **\$306,995**  
USCRF/Social Security Administration – General

### Medicine, School of

#### *Family & Preventive Medicine*

**McDermott, Suzanne**

*Secondary Conditions Associated with Disabilities - (FA00)* **\$392,054**  
Centers for Disease Control/HHS

#### *Pediatrics/Developmental Disabilities, Center for*

**Lamb, Lawrence**

*Antileukemic Effect of gamma/delta T cells - (KA03)* **\$129,045**  
USCRF/The Leukemia & Lymphoma Society

**Nursing, College of**  
*Academic & Student Affairs*

**Moneyham, Linda**

*A Peer Counseling Intervention for Rural Women with HIV - (FA01)* **\$75,458**  
National Institute of Nursing Research/NIH

**Public Health, Norman J. Arnold School of**  
*Environmental Health Sciences*

**Feigley, Charles**

*Investigating Principles of Workroom Exposure - (FA23)* **\$180,625**  
USCRF/National Institute for Occupational Health & Safety (NIOSH)/HHS

*Epidemiology & Biostatistics*

**Mayer-Davis, Elizabeth**

*Uniform Population-Based Approach and Research on Childhood Diabetes -  
SEARCH for Diabetes - (FA24)* **\$648,233**  
Centers for Disease Control/HHS

*Exercise Science*

**Pate, Russell**

*Trial of Activity for Adolescent Girls - Field Center - (FA08)* **\$667,856**  
National Heart, Lung & Blood Institute/NIH

**Research, Vice President for**  
*Biomedical Research Infrastructure Network (BRIN)*

**Dunlap, R. Bruce**

*Biomedical Research Infrastructure Network BRIN Training & Mentoring Core -  
(FA01)* **\$250,000**  
USCRF/National Center for Research Resources/NIH

**Student Affairs, Division of**  
*Student Life*

**Gant, Rick**

*Reducing Underage Drinking at USC by Focusing on First-Year Students -  
(FL17)* **\$20,000**  
SC Department of Alcohol & Other Drug Abuse Services/DOJ

# Sponsored Programs and Research Monthly Report

## SUMMARY OF AWARDS SEPTEMBER - 2002

### By Purpose

Research Awards	\$9,181,180
Training Awards	\$201,236
Service Awards	\$1,918,079
Equipment Awards	\$12,000
Graduate Assistantship Awards	\$179,408

**TOTAL: \$11,491,903**

### By Source

Federal Awards	\$8,730,556
Private Awards	\$210,348
State Awards	\$1,826,198

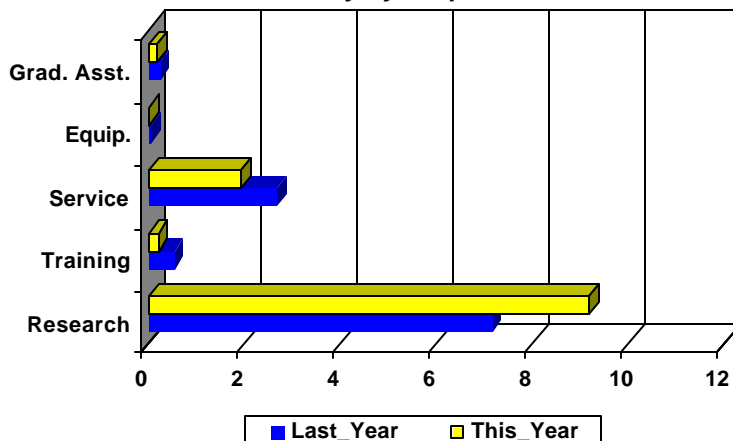
**TOTAL: \$11,491,903**

### COMPARISON OF AMOUNT RECEIVED

SEPTEMBER - 2002 vs. SEPTEMBER - 2001

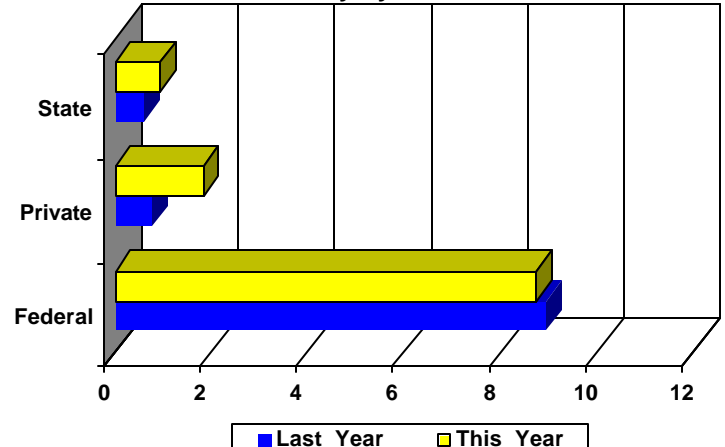
Amounts Received  
(In millions of dollars)

Summary by Purpose



Amounts Received  
(In millions of dollars)

Summary by Source



## AWARDS BY DEPARTMENT

DEPARTMENT	CURRENT MONTH SEPTEMBER - 2002		YEAR TO DATE FY 2003		YEAR TO DATE FY 2002	
<b>Business &amp; Finance</b>						
Recycling & Waste Management	0	\$0	0	\$0	1	\$9,970
<b>Total :</b>	<b>0</b>	<b>\$0</b>	<b>0</b>	<b>\$0</b>	<b>1</b>	<b>\$9,970</b>
<b>Business, Moore School of</b>						
Business Administration - Division of Research	7	\$18,667	18	\$504,062	33	\$737,825
Small Business Development Center	0	\$0	0	\$0	1	\$30,000
<b>Total :</b>	<b>7</b>	<b>\$18,667</b>	<b>18</b>	<b>\$504,062</b>	<b>34</b>	<b>\$767,825</b>
<b>Education, College of</b>						
Education	0	\$0	2	\$114,999	0	\$0
Education Leadership & Policies	0	\$0	3	\$175,527	3	\$171,797
Educational Psychology	0	\$0	4	\$286,208	5	\$298,571
Instruction & Teacher Education	0	\$0	4	\$553,458	5	\$1,497,110
<b>Total :</b>	<b>0</b>	<b>\$0</b>	<b>13</b>	<b>\$1,130,192</b>	<b>13</b>	<b>\$1,967,478</b>
<b>Engineering &amp; Information Technology,</b>						
Chemical Engineering	2	\$227,004	11	\$1,420,904	10	\$1,534,326
Civil & Environmental Engineering	0	\$0	3	\$107,790	3	\$210,627
Computer Science & Engineering	1	\$4,687	6	\$83,501	6	\$76,828
Electrical Engineering	2	\$2,070,000	3	\$2,320,000	2	\$80,633
Engineering & Information Technology, College of	1	\$16,500	1	\$16,500	0	\$0
Mechanical Engineering	4	\$300,025	10	\$979,136	7	\$497,935
SC Alliance for Minority Participation (SCAMP)	2	\$100,837	3	\$179,209	5	\$424,672
<b>Total :</b>	<b>12</b>	<b>\$2,719,053</b>	<b>37</b>	<b>\$5,107,040</b>	<b>33</b>	<b>\$2,825,021</b>
<b>Enrollment Management</b>						
	0	\$0	1	\$37,583	0	\$0
<b>Total :</b>	<b>0</b>	<b>\$0</b>	<b>1</b>	<b>\$37,583</b>	<b>0</b>	<b>\$0</b>
<b>Environment, School of the</b>						
Earth Sciences & Resources Institute	1	\$3,123	3	\$23,565	2	\$47,275
Environment, School of the	0	\$0	2	\$158,453	6	\$223,030
<b>Total :</b>	<b>1</b>	<b>\$3,123</b>	<b>5</b>	<b>\$182,018</b>	<b>8</b>	<b>\$270,305</b>
<b>Families in Society, Institute for</b>						
	6	\$921,669	8	\$1,976,531	7	\$1,386,131
<b>Total :</b>	<b>6</b>	<b>\$921,669</b>	<b>8</b>	<b>\$1,976,531</b>	<b>7</b>	<b>\$1,386,131</b>
<b>Honors College, South Carolina</b>						
	1	\$4,000	1	\$4,000	1	\$102,676
<b>Total :</b>	<b>1</b>	<b>\$4,000</b>	<b>1</b>	<b>\$4,000</b>	<b>1</b>	<b>\$102,676</b>
<b>Hospitality, Retail &amp; Sports Management,</b>						
Hospitality, Retail & Sports Mgmt - (Dean)	0	\$0	0	\$0	1	\$62,500
Retailing Studies, Center for	0	\$0	1	\$8,000	1	\$11,429
<b>Total :</b>	<b>0</b>	<b>\$0</b>	<b>1</b>	<b>\$8,000</b>	<b>2</b>	<b>\$73,929</b>

DEPARTMENT	CURRENT MONTH SEPTEMBER - 2002		YEAR TO DATE FY 2003		YEAR TO DATE FY 2002	
<b>Institutional Planning</b>						
<b>Law, School of</b>						
Law, School of	0	\$0	2	\$475,925	4	\$355,237
<b>Total :</b>	<b>0</b>	<b>\$0</b>	<b>2</b>	<b>\$475,925</b>	<b>4</b>	<b>\$355,237</b>
<b>Liberal Arts, College of</b>						
Archaeology & Anthropology, Institute of	2	\$99,616	4	\$144,381	4	\$337,626
Criminology & Criminal Justice, Department of	0	\$0	1	\$24,447	1	\$32,596
English	0	\$0	0	\$0	1	\$35,000
Geography	4	\$211,153	7	\$406,098	6	\$401,390
Government & International Studies	1	\$1,161	3	\$11,778	3	\$9,298
History	1	\$1,000	9	\$126,905	9	\$39,243
Liberal Arts - (Dean)	0	\$0	0	\$0	1	\$6,000
McKissick Museum	0	\$0	1	\$3,000	2	\$5,750
Naval Science	0	\$0	0	\$0	2	\$4,000
Philosophy	0	\$0	0	\$0	1	\$40,400
Psychology	4	\$224,256	26	\$509,520	13	\$356,263
Public Service & Policy Research, Institute for	2	\$474,903	6	\$2,242,890	5	\$56,177
Religious Studies	0	\$0	1	\$25,000	1	\$50,000
Sociology	0	\$0	1	\$90,424	0	\$0
Southern Studies, Institute for	0	\$0	0	\$0	1	\$27,778
<b>Total :</b>	<b>14</b>	<b>\$1,012,089</b>	<b>59</b>	<b>\$3,584,443</b>	<b>50</b>	<b>\$1,401,521</b>
<b>Mass Communications &amp; Information</b>						
Journalism & Mass Communications, School of	3	\$433,955	8	\$464,078	7	\$167,495
Library & Information Sciences, School of	0	\$0	4	\$21,462	3	\$45,185
<b>Total :</b>	<b>3</b>	<b>\$433,955</b>	<b>12</b>	<b>\$485,540</b>	<b>10</b>	<b>\$212,680</b>
<b>Medicine, School of</b>						
Biochemistry *	2	\$252,834	9	\$944,315	5	\$683,155
Cancer Center, South Carolina	0	\$0	5	\$70,382	2	\$84,000
Cell & Developmental Biology & Anatomy	2	\$137,534	7	\$609,009	4	\$329,566
Cell Biology & Neurosciences	0	\$0	0	\$0	2	\$219,066
Family & Preventive Medicine	2	\$444,254	4	\$795,163	2	\$177,671
Health & Safety	0	\$0	0	\$0	1	\$9,600
Internal Medicine	2	\$503,497	9	\$551,242	12	\$361,437
Medicine Library	0	\$0	1	\$25,000	1	\$3,880
Neuropsychiatry	0	\$0	3	\$246,720	4	\$95,177
Obstetrics & Gynecology	1	\$71,165	1	\$71,165	0	\$0
Ophthalmology	0	\$0	1	\$2,703	0	\$0
Pathology	0	\$0	1	\$15,000	1	\$15,000
Pathology & Microbiology	0	\$0	3	\$179,021	4	\$511,016
Pediatrics/Developmental Disabilities, Center for	4	\$147,633	9	\$1,298,468	4	\$1,093,108
Pharmacology, Physiology & Neuroscience	2	\$266,874	5	\$371,874	0	\$0
Radiology	0	\$0	0	\$0	1	\$401,974
Research & Special Projects	0	\$0	4	\$101,710	7	\$284,228
Surgery	0	\$0	1	\$29,910	5	\$148,608
<b>Total :</b>	<b>15</b>	<b>\$1,823,791</b>	<b>63</b>	<b>\$5,311,682</b>	<b>55</b>	<b>\$4,417,486</b>
<b>Nursing, College of</b>						

DEPARTMENT	CURRENT MONTH SEPTEMBER - 2002		YEAR TO DATE FY 2003		YEAR TO DATE FY 2002	
Academic & Student Affairs	2	\$88,458	5	\$391,332	9	\$722,855
Administrative & Clinical Nursing	2	\$97,164	2	\$97,164	1	\$86,003
Family & Community Health Nursing	0	\$0	2	\$233,712	1	\$7,725
<b>Total :</b>	<b>4</b>	<b>\$185,622</b>	<b>9</b>	<b>\$722,208</b>	<b>11</b>	<b>\$816,583</b>
<b>Pharmacy, College of</b>						
Basic Pharmaceutical Sciences	0	\$0	3	\$307,629	3	\$130,141
Palmetto Poison Center	0	\$0	1	\$210,990	2	\$285,881
Pharmacy & Health Outcomes Sci.	0	\$0	1	\$14,500	1	\$20,125
Pharmacy Practice	1	\$12,605	1	\$12,605	0	\$0
<b>Total :</b>	<b>1</b>	<b>\$12,605</b>	<b>6</b>	<b>\$545,724</b>	<b>6</b>	<b>\$436,147</b>
<b>Provost, Office of the</b>						
TRIO Programs	0	\$0	5	\$1,253,694	5	\$1,259,359
<b>Total :</b>	<b>0</b>	<b>\$0</b>	<b>5</b>	<b>\$1,253,694</b>	<b>5</b>	<b>\$1,259,359</b>
<b>Public Health, Norman J. Arnold School of</b>						
Communication Sciences & Disorders	0	\$0	0	\$0	1	\$7,917
Environmental Health Sciences	4	\$337,227	12	\$557,975	27	\$854,171
Epidemiology & Biostatistics	3	\$696,333	13	\$873,028	11	\$1,224,402
Exercise Science	5	\$748,857	9	\$848,527	5	\$730,911
Health Administration	5	\$12,974	13	\$32,832	7	\$112,179
Health Promotion, Education & Behavior	10	\$68,085	28	\$335,034	16	\$247,096
Health Services & Policy Research, Center for	0	\$0	4	\$230,092	2	\$147,735
Prevention Research Center	3	\$211,286	6	\$315,270	13	\$2,307,302
Public Health, Norman J. Arnold School of - (Dean)	0	\$0	3	\$1,123,200	0	\$0
<b>Total :</b>	<b>30</b>	<b>\$2,074,762</b>	<b>88</b>	<b>\$4,315,958</b>	<b>82</b>	<b>\$5,631,713</b>
<b>Regional and Four-Year Campuses</b>						
USC Aiken	6	\$447,313	10	\$698,291	7	\$393,868
USC Beaufort	0	\$0	2	\$63,000	4	\$136,564
USC Lancaster	0	\$0	3	\$467,971	2	\$221,454
USC Salkehatchie	0	\$0	1	\$237,948	2	\$221,454
USC Spartanburg	7	\$406,763	23	\$1,031,148	19	\$792,645
USC Sumter	0	\$0	1	\$15,000	3	\$222,454
USC Union	0	\$0	1	\$232,948	1	\$224,471
<b>Total :</b>	<b>13</b>	<b>\$854,076</b>	<b>41</b>	<b>\$2,746,306</b>	<b>38</b>	<b>\$2,212,910</b>
<b>Research, Vice President for</b>						
Biomedical Research Infrastructure Network (BRIN)	1	\$250,000	3	\$450,000	0	\$0
NanoCenter	2	\$182,000	6	\$763,388	3	\$287,997
Research, Vice President for - (General)	0	\$0	0	\$0	1	\$50,000
Sponsored Programs & Research	1	\$77,500	1	\$77,500	1	\$10,683
Technology Incubator	1	\$160,000	1	\$160,000	0	\$0
<b>Total :</b>	<b>5</b>	<b>\$669,500</b>	<b>11</b>	<b>\$1,450,888</b>	<b>5</b>	<b>\$348,680</b>
<b>Science and Mathematics, College of</b>						
Baruch Institute	1	\$499,357	9	\$3,109,904	8	\$1,162,960
Biological Research & Technology, Institute for	0	\$0	0	\$0	1	\$2,200
Biological Sciences	3	\$324,030	17	\$1,232,053	13	\$1,226,417
Chemistry & Biochemistry	1	\$2,834	11	\$893,812	11	\$1,340,607

DEPARTMENT	CURRENT MONTH SEPTEMBER - 2002		YEAR TO DATE FY 2003		YEAR TO DATE FY 2002	
COBRE: Center for Colon Cancer Research	1	\$5,000	1	\$5,000	0	\$0
Geological Sciences	5	\$29,134	22	\$1,316,865	19	\$935,617
Mathematics	0	\$0	1	\$60,000	0	\$0
Physics & Astronomy	3	\$98,500	8	\$393,200	2	\$106,070
Science & Math Administration	0	\$0	5	\$665,091	5	\$554,283
Statistics	1	\$4,400	9	\$259,255	5	\$231,906
<b>Total :</b>	<b>15</b>	<b>\$963,255</b>	<b>83</b>	<b>\$7,935,180</b>	<b>64</b>	<b>\$5,560,060</b>
<b>Social Work, College of</b>	5	\$28,570	31	\$932,483	30	\$1,270,547
<b>Total :</b>	<b>5</b>	<b>\$28,570</b>	<b>31</b>	<b>\$932,483</b>	<b>30</b>	<b>\$1,270,547</b>
<b>Student Affairs, Division of</b>						
Student Life	1	\$20,000	2	\$132,277	0	\$0
<b>Total :</b>	<b>1</b>	<b>\$20,000</b>	<b>2</b>	<b>\$132,277</b>	<b>0</b>	<b>\$0</b>
<b>University Libraries</b>						
Thomas Cooper Library	0	\$0	0	\$0	1	\$1,020
<b>Total :</b>	<b>0</b>	<b>\$0</b>	<b>0</b>	<b>\$0</b>	<b>1</b>	<b>\$1,020</b>
<b>Report TOTAL :</b>	<b>131</b>	<b>\$11,491,903</b>	<b>487</b>	<b>\$37,897,419</b>	<b>455</b>	<b>\$30,644,123</b>

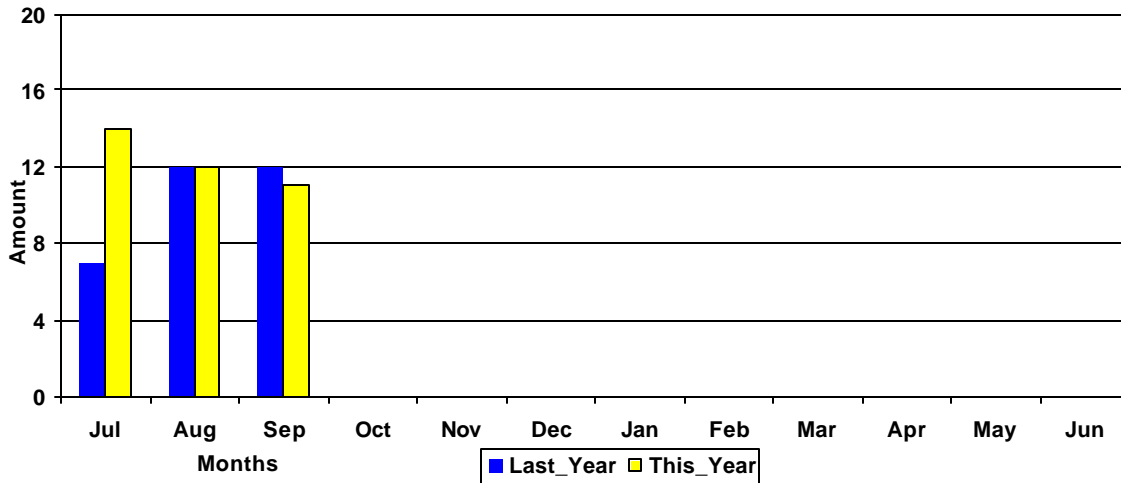
\* - Biochemistry represents faculty with a dual appointment to the Department of Chemistry and the School of Medicine. The figures are included in both division totals but only once in the overall total.

# Funding Agency Comparison Report

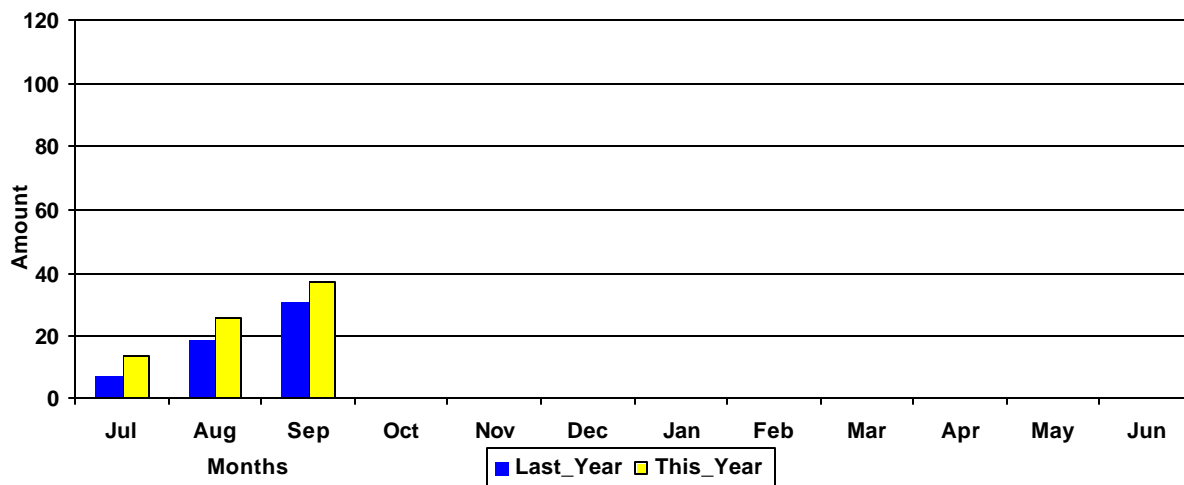
Year-To-Date -SEPTEMBER - 2002

	<u>FISCAL YEAR - 2003</u>		<u>FISCAL YEAR - 2002</u>	
<b>NSF Awards</b>	37	\$4,309,409	26	\$2,226,615
<b>NIH Awards</b>	49	\$4,515,747	32	\$3,701,190
<b>Dept. Of Defense Awards</b>	22	\$5,349,747	13	\$570,412
<b>Dept. Of Education Awards</b>	36	\$5,435,310	34	\$6,005,532
<b>Dept. Of Energy Awards</b>	14	\$1,802,638	16	\$1,550,370
<b>State and Municipalities Awards</b>	62	\$1,961,937	63	\$2,655,473
<b>Non Profit Awards</b>	72	\$2,415,218	68	\$1,963,550
<b>Business and Industry Awards</b>	57	\$678,006	62	\$877,244

Amounts Awarded  
(In millions of dollars)



Cumulative Amounts Awarded  
(In millions of dollars)



# PROPOSALS BY DEPARTMENT

DEPARTMENT	CURRENT MONTH SEPTEMBER - 2002		YEAR TO DATE FY 2003		YEAR TO DATE FY 2002	
<b>Business, Moore School of</b>						
Business Administration - Division of Research	9	\$83,624	18	\$228,138	27	\$273,509
Small Business Development Center	1	\$131,464	3	\$1,352,178	4	\$1,311,271
<b>Total :</b>	<b>10</b>	<b>\$215,088</b>	<b>21</b>	<b>\$1,580,316</b>	<b>31</b>	<b>\$1,584,780</b>
<b>Education, College of</b>						
Education Leadership & Policies	0	\$0	1	\$130,631	5	\$230,080
Educational Psychology	1	\$74,954	5	\$162,849	6	\$200,728
Instruction & Teacher Education	0	\$0	2	\$29,795	1	\$20,000
USC Children's Center	1	\$29,000	1	\$29,000	0	\$0
<b>Total :</b>	<b>2</b>	<b>\$103,954</b>	<b>9</b>	<b>\$352,275</b>	<b>12</b>	<b>\$450,808</b>
<b>Engineering &amp; Information Technology,</b>						
Chemical Engineering	2	\$279,501	9	\$833,855	8	\$826,144
Civil & Environmental Engineering	2	\$85,220	6	\$369,650	6	\$401,869
Computer Science & Engineering	4	\$125,524	13	\$946,817	8	\$177,278
Electrical Engineering	2	\$347,716	6	\$744,436	4	\$1,010,903
Engineering & Information Technology, College of	1	\$16,500	2	\$71,004	1	\$36,836
Mechanical Engineering	2	\$261,303	7	\$569,579	5	\$255,366
SC Alliance for Minority Participation (SCAMP)	1	\$16,000	1	\$16,000	1	\$404,672
<b>Total :</b>	<b>14</b>	<b>\$1,131,764</b>	<b>44</b>	<b>\$3,551,341</b>	<b>33</b>	<b>\$3,113,068</b>
<b>Environment, School of the</b>						
Earth Sciences & Resources Institute	0	\$0	1	\$3,123	2	\$838,659
Environment, School of the	3	\$21,236	6	\$594,332	10	\$507,441
<b>Total :</b>	<b>3</b>	<b>\$21,236</b>	<b>7</b>	<b>\$597,455</b>	<b>12</b>	<b>\$1,346,100</b>
<b>Families in Society, Institute for</b>						
	3	\$159,781	11	\$2,016,691	8	\$795,806
<b>Total :</b>	<b>3</b>	<b>\$159,781</b>	<b>11</b>	<b>\$2,016,691</b>	<b>8</b>	<b>\$795,806</b>
<b>Honors College, South Carolina</b>						
	2	\$585,579	2	\$585,579	1	\$71,982
<b>Total :</b>	<b>2</b>	<b>\$585,579</b>	<b>2</b>	<b>\$585,579</b>	<b>1</b>	<b>\$71,982</b>
<b>Hospitality, Retail &amp; Sports Management,</b>						
<b>Institutional Planning</b>						
<b>Law Enforcement &amp; Safety</b>						
	0	\$0	0	\$0	1	\$21,600
<b>Total :</b>	<b>0</b>	<b>\$0</b>	<b>0</b>	<b>\$0</b>	<b>1</b>	<b>\$21,600</b>
<b>Law, School of</b>						
Law, School of	2	\$109,881	3	\$385,806	6	\$1,053,132
<b>Total :</b>	<b>2</b>	<b>\$109,881</b>	<b>3</b>	<b>\$385,806</b>	<b>6</b>	<b>\$1,053,132</b>
<b>Liberal Arts, College of</b>						
Anthropology	1	\$4,200	1	\$4,200	0	\$0

DEPARTMENT	CURRENT MONTH SEPTEMBER - 2002		YEAR TO DATE FY 2003		YEAR TO DATE FY 2002	
Archaeology & Anthropology, Institute of	1	\$15,000	4	\$834,524	3	\$96,952
Art	0	\$0	1	\$1,200	0	\$0
English	0	\$0	0	\$0	1	\$12,000
Geography	4	\$35,723	9	\$182,671	5	\$174,404
Government & International Studies	2	\$7,995	5	\$30,591	4	\$56,993
History	1	\$92,190	7	\$161,977	10	\$176,179
International Studies, Institute of	0	\$0	1	\$149,055	0	\$0
McKissick Museum	1	\$38,901	2	\$56,078	2	\$6,500
Psychology	7	\$1,073,012	26	\$1,965,954	12	\$575,017
Public Service & Policy Research, Institute for	0	\$0	2	\$80,056	5	\$1,869,493
Religious Studies	0	\$0	1	\$25,000	1	\$50,000
Sociology	0	\$0	2	\$115,084	1	\$70,661
Southern Studies, Institute for	0	\$0	1	\$10,200	1	\$28,968
<b>Total :</b>	<b>17</b>	<b>\$1,267,021</b>	<b>62</b>	<b>\$3,616,590</b>	<b>45</b>	<b>\$3,117,167</b>
<b>Mass Communications &amp; Information</b>						
Journalism & Mass Communications, School of	3	\$433,955	8	\$464,078	7	\$168,087
Library & Information Sciences, School of	0	\$0	3	\$18,597	0	\$0
<b>Total :</b>	<b>3</b>	<b>\$433,955</b>	<b>11</b>	<b>\$482,675</b>	<b>7</b>	<b>\$168,087</b>
<b>Medicine, School of</b>						
Cancer Center, South Carolina	0	\$0	5	\$70,382	2	\$84,000
Cell & Developmental Biology & Anatomy	2	\$652,880	4	\$782,880	4	\$950,958
Cell Biology & Neurosciences	0	\$0	0	\$0	1	\$108,000
Family & Preventive Medicine	1	\$52,200	3	\$152,438	3	\$388,508
Internal Medicine	1	\$50,000	6	\$860,662	4	\$198,250
Neuropsychiatry	0	\$0	0	\$0	5	\$517,565
Obstetrics & Gynecology	1	\$71,165	1	\$71,165	0	\$0
Pathology	0	\$0	0	\$0	4	\$488,378
Pathology & Microbiology	2	\$230,558	7	\$663,336	2	\$306,719
Pediatrics/Developmental Disabilities, Center for	2	\$91,853	4	\$463,977	7	\$1,524,587
Pharmacology, Physiology & Neuroscience	5	\$630,538	11	\$1,062,406	3	\$121,998
Research & Special Projects	1	\$60,000	3	\$104,650	1	\$550
Surgery	1	\$21,315	1	\$21,315	4	\$265,323
<b>Total :</b>	<b>16</b>	<b>\$1,860,509</b>	<b>45</b>	<b>\$4,253,211</b>	<b>40</b>	<b>\$4,954,836</b>
<b>Nursing, College of</b>						
Academic & Student Affairs	0	\$0	1	\$28,470	2	\$85,390
Administrative & Clinical Nursing	1	\$363,750	2	\$843,029	1	\$476,390
Family & Community Health Nursing	0	\$0	0	\$0	4	\$512,876
<b>Total :</b>	<b>1</b>	<b>\$363,750</b>	<b>3</b>	<b>\$871,499</b>	<b>7</b>	<b>\$1,074,656</b>
<b>Pharmacy, College of</b>						
Basic Pharmaceutical Sciences	0	\$0	4	\$388,090	2	\$541,875
Pharmacy & Health Outcomes Sci.	0	\$0	0	\$0	1	\$30,000
Pharmacy Practice	0	\$0	0	\$0	1	\$18,423
<b>Total :</b>	<b>0</b>	<b>\$0</b>	<b>4</b>	<b>\$388,090</b>	<b>4</b>	<b>\$590,298</b>
<b>Provost, Office of the</b>						
TRIO Programs	0	\$0	1	\$310,464	0	\$0
<b>Total :</b>	<b>0</b>	<b>\$0</b>	<b>1</b>	<b>\$310,464</b>	<b>0</b>	<b>\$0</b>

DEPARTMENT	CURRENT MONTH SEPTEMBER - 2002		YEAR TO DATE FY 2003		YEAR TO DATE FY 2002	
<b>Public Health, Norman J. Arnold School of</b>						
Communication Sciences & Disorders	0	\$0	1	\$7,141	1	\$7,917
Environmental Health Sciences	2	\$57,511	8	\$1,605,903	8	\$762,998
Epidemiology & Biostatistics	3	\$115,469	9	\$409,651	7	\$417,320
Exercise Science	2	\$120,889	5	\$819,245	7	\$486,508
Health Administration	5	\$13,140	14	\$595,438	7	\$171,379
Health Promotion, Education & Behavior	11	\$370,723	29	\$2,228,601	13	\$285,194
Health Services & Policy Research, Center for	1	\$90,000	2	\$104,094	2	\$98,136
Prevention Research Center	2	\$366,777	9	\$706,957	2	\$315,527
Public Health, Norman J. Arnold School of - (Dean)	1	\$48,999	3	\$2,143,199	0	\$0
<b>Total :</b>	<b>27</b>	<b>\$1,183,508</b>	<b>80</b>	<b>\$8,620,229</b>	<b>47</b>	<b>\$2,544,978</b>
<b>Regional and Four-Year Campuses</b>						
USC Aiken	4	\$2,417,000	8	\$2,856,279	6	\$463,771
USC Beaufort	3	\$1,401,600	7	\$1,500,675	3	\$96,000
USC Lancaster	0	\$0	3	\$480,434	2	\$20,000
USC Salkehatchie	0	\$0	3	\$26,501	0	\$0
USC Spartanburg	5	\$445,943	6	\$462,691	15	\$671,346
USC Sumter	0	\$0	0	\$0	1	\$1,000
USC Union	0	\$0	1	\$222,948	0	\$0
<b>Total :</b>	<b>12</b>	<b>\$4,264,543</b>	<b>28</b>	<b>\$5,549,528</b>	<b>27</b>	<b>\$1,252,117</b>
<b>Research, Vice President for</b>						
Biomedical Research Infrastructure Network (BRIN)	0	\$0	1	\$2,000,000	0	\$0
NanoCenter	3	\$551,390	4	\$716,357	6	\$3,204,559
Technology Incubator	1	\$160,000	1	\$160,000	0	\$0
<b>Total :</b>	<b>4</b>	<b>\$711,390</b>	<b>6</b>	<b>\$2,876,357</b>	<b>6</b>	<b>\$3,204,559</b>
<b>Science and Mathematics, College of</b>						
Baruch Institute	1	\$84,502	6	\$1,027,343	10	\$693,327
Biological Sciences	10	\$1,978,632	22	\$3,281,527	18	\$1,879,300
Chemistry & Biochemistry	6	\$599,969	14	\$1,851,904	13	\$3,193,293
Geological Sciences	1	\$43,282	14	\$1,629,512	14	\$981,771
Mathematics	1	\$166,667	4	\$407,822	3	\$129,151
Physics & Astronomy	4	\$678,199	14	\$1,198,709	7	\$969,460
Science Education, Center for	1	\$12,400	1	\$12,400	1	\$12,400
Statistics	2	\$90,441	6	\$209,070	5	\$21,893
<b>Total :</b>	<b>26</b>	<b>\$3,654,092</b>	<b>81</b>	<b>\$9,618,287</b>	<b>71</b>	<b>\$7,880,595</b>
<b>Social Work, College of</b>	5	\$28,570	32	\$791,894	29	\$606,737
<b>Total :</b>	<b>5</b>	<b>\$28,570</b>	<b>32</b>	<b>\$791,894</b>	<b>29</b>	<b>\$606,737</b>
<b>Student Affairs, Division of</b>						
Housing & Residential Services	0	\$0	0	\$0	1	\$25,000
Student Health	0	\$0	1	\$6,788	0	\$0
Student Life	0	\$0	1	\$4,271	1	\$4,247
<b>Total :</b>	<b>0</b>	<b>\$0</b>	<b>2</b>	<b>\$11,059</b>	<b>2</b>	<b>\$29,247</b>
<b>University 101</b>	0	\$0	1	\$23,925	0	\$0

DEPARTMENT	CURRENT MONTH SEPTEMBER - 2002		YEAR TO DATE FY 2003		YEAR TO DATE FY 2002	
<b>Total :</b>	<b>0</b>	<b>\$0</b>	<b>1</b>	<b>\$23,925</b>	<b>0</b>	<b>\$0</b>
<b>University Libraries</b>						
Thomas Cooper Library	0	\$0	1	\$4,643	1	\$90,000
<b>Total :</b>	<b>0</b>	<b>\$0</b>	<b>1</b>	<b>\$4,643</b>	<b>1</b>	<b>\$90,000</b>
<b>Report TOTAL :</b>	<b>147</b>	<b>\$16,094,621</b>	<b>454</b>	<b>\$46,487,914</b>	<b>390</b>	<b>\$33,950,553</b>