

MEMORANDUM

To: Harris Pastides, Ph.D.
 Interim Vice President for Research

From: Anthony M. Boccanfuso, Ph.D.
 Managing Director

RE: Report of Sponsored Program Activity for October 2002

Date: November 19, 2002

The University received awards totaling \$21.6 million during the month, an eighty-six percent (86%) increase from last October (\$11.6 million). **Thus far in the fiscal year, award dollars are thirty-three (33%) ahead from last year, \$59.6 million vs. \$44.7 million.**

Faculty submitted 112 proposals requesting \$19.4 million during October. Thus far in the fiscal year, SPAR has processed 566 proposals requesting \$65.9 million, compared to last year's totals of 520 and \$47.7 million.

	October FY03	YTD FY02	YTD FY03	YTD Change
Award Dollars	\$21,564,866	\$44,738,453	\$59,560,418	33.1%
Research Direct Expenditures	\$5,245,181	\$19,869,429	\$19,264,284	(2.7)%
Research IDC Expenditures	\$1,136,522	\$5,016,616	\$5,076,091	1.1%
Proposals Submitted	112	520	566	9.1%
Proposal Dollars Requested	\$19,427,740	\$47,683,886	\$65,912,304	38.2%

Notable Changes in Activity

	July to October FY02	July to October FY03
Engineering & Information Technology	\$7,219,293	\$6,097,771
Environment, School of the	\$449,304	\$1,002,018
Liberal Arts, College of	\$1,907,893	\$5,988,634
Medicine, School of	\$6,213,152	\$8,266,625
Public Health, NJA	\$10,568,223	\$12,311,019
Science and Mathematics, College of	\$6,552,331	\$12,509,545

cc: Jerome D. Odom, Ph.D.
 R. Steven Etheredge
 Richard Kelly

October Featured Awards

Business, Moore School of

Business Administration – Division of Research

Woodward, Douglas

Economic Impact of the Health Care Industry - (KA05)
USCRF/SC Hospital Association

\$18,441

Engineering & Information Technology, College of

Electrical Engineering

Simin, Grigory

*A1GaN-GaN Material Wafer Supply for RF/Microwave Device
Development - (FA20)*
USCRF/TRW, Inc./DOD

\$816,000

Liberal Arts, College of

McKissick Museum

Williams, Jay

*"With God's Help": The Story of Indian Field and Shady -
Grove Camp Meetings - (FA02)*
South Carolina Humanities Council

\$17,177

Psychology

Booze, Rosemarie

Neurodevelopment Basis(es) of Nicotine Sensitization - (FA13)
USCRF/National Institutes of Health (NIH) - General

\$303,750

Prinz, Ronald

Population-Based System of Parenting Interventions - (FA12)
USCRF/Centers for Disease Control (CDC)/HHS

\$1,479,996

**Public Health, Norman J. Arnold School of
Epidemiology & Biostatistics**
McKeown, Robert

Exploring Diabetes and Depression in Youth - (FA25)
USCRF/National Institute of Mental Health (NIMH)/NIH

\$368,684

Prevention Research Center
Ainsworth, Barbara

*SIP 20-01: Surveillance of Physical Activity and Weight
Control - (FA37)*
Centers for Disease Control (CDC)/HHS

\$349,976

**Science and Mathematics, College of
Baruch Institute**

Lewitus, Alan

*Widespread Kryptoperidinium Blooms in South Carolina
Estuaries: Improving Detection, Understanding Why They Form,
and Assessing Their Impact on Shellfish - (FA36)*
USCRF/National Oceanic and Atmospheric Administration (NOAA)/DOC

\$449,828

COBRE: Center for Colon Cancer Research

Berger, Franklin

*COBRE: Physical Activity, Energy Balance, and Colon
Cancer Risk - (FA04)*
USCRF/National Center for Research Resources (NCRR)/NIH

\$154,436

Sponsored Programs and Research Monthly Report

SUMMARY OF AWARDS OCTOBER - 2002

By Purpose

Research Awards	\$15,190,825
Training Awards	\$899,379
Service Awards	\$5,327,993
Equipment Awards	\$98,004
Graduate Assistantship Awards	\$48,665
TOTAL:	\$21,564,866

By Source

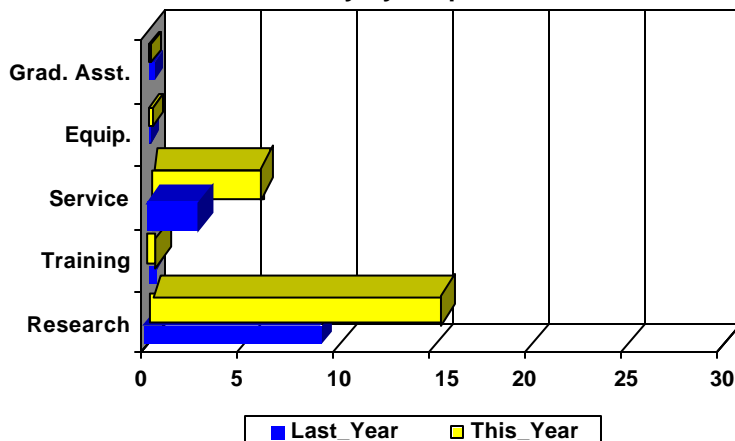
Federal Awards	\$20,756,459
Private Awards	\$622,166
State Awards	\$186,241
TOTAL:	\$21,564,866

COMPARISON OF AMOUNT RECEIVED

OCTOBER - 2002 vs. OCTOBER - 2001

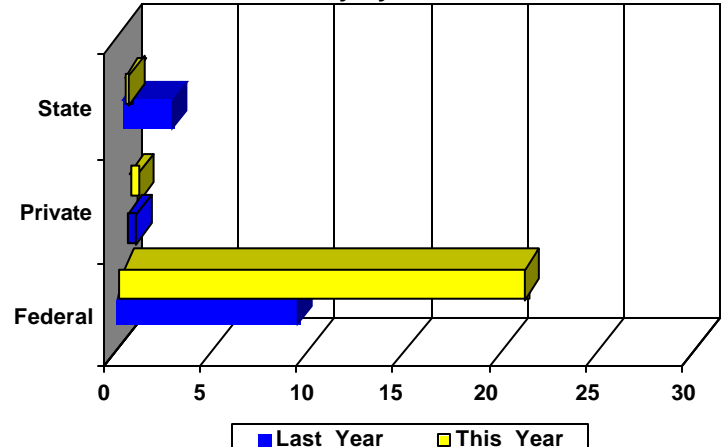
Amounts Received
(In millions of dollars)

Summary by Purpose



Amounts Received
(In millions of dollars)

Summary by Source



AWARDS BY DEPARTMENT

DEPARTMENT	CURRENT MONTH OCTOBER - 2002		YEAR TO DATE FY 2003		YEAR TO DATE FY 2002	
Business & Finance						
Recycling & Waste Management	0	\$0	0	\$0	1	\$9,970
Total :	0	\$0	0	\$0	1	\$9,970
Business, Moore School of						
Business Administration - Division of Research	3	\$24,872	21	\$542,187	39	\$782,213
Small Business Development Center	0	\$0	0	\$0	3	\$187,500
Total :	3	\$24,872	21	\$542,187	42	\$969,713
Education, College of						
Education	0	\$0	2	\$114,999	0	\$0
Education Leadership & Policies	1	\$20,000	4	\$195,527	3	\$171,797
Educational Psychology	1	\$34,131	5	\$320,339	6	\$299,371
Instruction & Teacher Education	3	\$791,039	8	\$1,394,497	8	\$1,548,110
School Improvement Council Assistance	0	\$0	0	\$0	1	\$1,000
Total :	5	\$845,170	19	\$2,025,362	18	\$2,020,278
Engineering & Information Technology,						
Chemical Engineering	4	\$193,313	15	\$1,613,217	11	\$1,542,326
Civil & Environmental Engineering	1	\$5,220	4	\$113,010	6	\$718,006
Computer Science & Engineering	1	\$6,000	7	\$89,501	7	\$81,708
Electrical Engineering	1	\$816,000	4	\$3,136,000	6	\$2,244,938
Engineering & Information Technology, College of	0	\$0	1	\$16,500	2	\$1,527,495
Mechanical Engineering	0	\$0	10	\$979,136	9	\$680,148
SC Alliance for Minority Participation (SCAMP)	1	\$16,000	4	\$150,407	5	\$424,672
Total :	8	\$1,036,533	45	\$6,097,771	46	\$7,219,293
Enrollment Management						
	0	\$0	1	\$37,583	0	\$0
Total :	0	\$0	1	\$37,583	0	\$0
Environment, School of the						
Earth Sciences & Resources Institute	0	\$0	3	\$23,565	3	\$226,274
Environment, School of the	2	\$820,000	4	\$978,453	6	\$223,030
Total :	2	\$820,000	7	\$1,002,018	9	\$449,304
Families in Society, Institute for						
	0	\$0	8	\$1,976,531	9	\$1,472,123
Total :	0	\$0	8	\$1,976,531	9	\$1,472,123
Honors College, South Carolina						
	0	\$0	1	\$4,000	1	\$102,676
Total :	0	\$0	1	\$4,000	1	\$102,676
Hospitality, Retail & Sports Management,						
Hospitality, Retail & Sports Mgmt - (Dean)	0	\$0	0	\$0	1	\$62,500
Retailing Studies, Center for	0	\$0	1	\$8,000	1	\$11,429
Total :	0	\$0	1	\$8,000	2	\$73,929

DEPARTMENT	CURRENT MONTH OCTOBER - 2002		YEAR TO DATE FY 2003		YEAR TO DATE FY 2002	
Institutional Planning						
Law, School of						
Law, School of	0	\$0	2	\$475,925	4	\$355,237
Total :	0	\$0	2	\$475,925	4	\$355,237
Liberal Arts, College of						
Archaeology & Anthropology, Institute of	1	\$9,800	5	\$154,181	5	\$353,524
Art	1	\$1,200	1	\$1,200	0	\$0
Criminology & Criminal Justice, Department of	0	\$0	1	\$24,447	1	\$32,596
English	0	\$0	0	\$0	2	\$45,000
Geography	1	\$58,740	8	\$464,838	10	\$525,823
Government & International Studies	1	\$6,834	4	\$18,612	4	\$49,298
History	1	\$6,233	10	\$133,138	10	\$40,243
Liberal Arts - (Dean)	0	\$0	0	\$0	1	\$6,000
McKissick Museum	2	\$129,677	3	\$132,677	3	\$7,750
Naval Science	0	\$0	0	\$0	2	\$4,000
Philosophy	0	\$0	0	\$0	2	\$40,544
Psychology	4	\$1,829,652	30	\$2,339,172	13	\$356,263
Public Service & Policy Research, Institute for	5	\$351,855	11	\$2,594,745	9	\$369,074
Religious Studies	0	\$0	1	\$25,000	1	\$50,000
Sociology	0	\$0	1	\$90,424	0	\$0
Southern Studies, Institute for	1	\$10,200	1	\$10,200	1	\$27,778
Total :	17	\$2,404,191	76	\$5,988,634	64	\$1,907,893
Mass Communications & Information						
Journalism & Mass Communications, School of	0	\$0	8	\$464,078	7	\$167,495
Library & Information Sciences, School of	0	\$0	4	\$21,462	3	\$45,185
Total :	0	\$0	12	\$485,540	10	\$212,680
Medicine, School of						
Basic Science Research	1	\$201,938	1	\$201,938	1	\$209,244
Biochemistry *	5	\$868,702	14	\$1,813,017	10	\$1,086,520
Cancer Center, South Carolina	0	\$0	5	\$70,382	2	\$84,000
Cell & Developmental Biology & Anatomy	3	\$321,119	10	\$930,128	5	\$399,566
Cell Biology & Neurosciences	0	\$0	0	\$0	5	\$375,368
Family & Preventive Medicine	0	\$0	4	\$795,163	5	\$521,145
Health & Safety	0	\$0	0	\$0	1	\$9,600
Internal Medicine	1	\$5,514	10	\$556,756	15	\$821,004
Medicine Library	2	\$239,909	3	\$264,909	2	\$137,048
Neuropsychiatry	0	\$0	3	\$246,720	4	\$95,177
Obstetrics & Gynecology	1	\$59,000	2	\$130,165	0	\$0
Ophthalmology	1	\$9,400	2	\$12,103	0	\$0
Pathology	1	\$10,000	2	\$25,000	1	\$15,000
Pathology & Microbiology	2	\$239,978	4	\$409,165	4	\$511,016
Pediatrics/Developmental Disabilities, Center for	5	\$456,142	14	\$1,754,610	5	\$1,100,708
Pharmacology, Physiology & Neuroscience	1	\$95,000	6	\$466,874	0	\$0
Radiology	1	\$412,435	1	\$412,435	1	\$401,974
Research & Special Projects	2	\$45,640	6	\$147,350	7	\$284,228
Surgery	0	\$0	1	\$29,910	6	\$161,554
Total :	26	\$2,964,777	88	\$8,266,625	74	\$6,213,152

DEPARTMENT	CURRENT MONTH OCTOBER - 2002		YEAR TO DATE FY 2003		YEAR TO DATE FY 2002	
Nursing, College of						
Academic & Student Affairs	1	\$184,572	6	\$572,904	10	\$736,092
Administrative & Clinical Nursing	0	\$0	2	\$97,164	1	\$86,003
Family & Community Health Nursing	0	\$0	2	\$233,712	1	\$7,725
Total :	1	\$184,572	10	\$903,780	12	\$829,820
Pharmacy, College of						
Basic Pharmaceutical Sciences	1	\$28,900	4	\$336,529	3	\$130,141
Palmetto Poison Center	0	\$0	1	\$210,990	2	\$285,881
Pharmacy & Health Outcomes Sci.	0	\$0	1	\$14,500	2	\$40,243
Pharmacy Practice	0	\$0	1	\$12,605	1	\$26,412
Total :	1	\$28,900	7	\$574,624	8	\$482,677
Provost, Office of the						
TRIO Programs	0	\$0	5	\$1,253,694	5	\$1,259,359
Total :	0	\$0	5	\$1,253,694	5	\$1,259,359
Public Health, Norman J. Arnold School of						
Communication Sciences & Disorders	0	\$0	0	\$0	1	\$7,917
Environmental Health Sciences	10	\$605,592	22	\$1,197,625	39	\$1,493,892
Epidemiology & Biostatistics	10	\$856,230	23	\$1,729,258	16	\$1,886,583
Exercise Science	4	\$238,272	13	\$1,086,799	7	\$769,572
Health Administration	1	\$2,500	14	\$35,332	10	\$596,827
Health Promotion, Education & Behavior	3	\$34,153	31	\$369,187	17	\$250,108
Health Services & Policy Research, Center for	1	\$14,094	5	\$244,186	4	\$201,300
Prevention Research Center	10	\$2,664,432	16	\$2,979,702	15	\$2,735,394
Public Health, Norman J. Arnold School of - (Dean)	4	\$3,545,730	7	\$4,668,930	3	\$2,626,630
Total :	43	\$7,961,003	131	\$12,311,019	112	\$10,568,223
Regional and Four-Year Campuses						
USC Aiken	0	\$0	10	\$698,291	11	\$802,956
USC Beaufort	1	\$1,600	3	\$64,600	4	\$136,564
USC Lancaster	0	\$0	3	\$467,971	3	\$240,832
USC Salkehatchie	1	\$3,000	2	\$240,948	2	\$221,454
USC Spartanburg	2	\$19,252	25	\$1,050,400	31	\$979,868
USC Sumter	1	\$245,079	2	\$260,079	4	\$250,208
USC Union	1	\$5,000	2	\$237,948	1	\$224,471
Total :	6	\$273,931	47	\$3,020,237	56	\$2,856,353
Research, Vice President for						
Biomedical Research Infrastructure Network (BRIN)	3	\$637,993	6	\$1,087,993	0	\$0
NanoCenter	0	\$0	6	\$763,388	3	\$287,997
Research, Vice President for - (General)	0	\$0	0	\$0	3	\$431,342
Sponsored Programs & Research	0	\$0	1	\$77,500	1	\$10,683
Technology Incubator	0	\$0	1	\$160,000	0	\$0
Total :	3	\$637,993	14	\$2,088,881	7	\$730,022
Science and Mathematics, College of						
Baruch Institute	5	\$945,554	15	\$4,099,516	10	\$1,203,509
Biological Research & Technology, Institute for	0	\$0	0	\$0	1	\$2,200

DEPARTMENT	CURRENT MONTH OCTOBER - 2002		YEAR TO DATE FY 2003		YEAR TO DATE FY 2002	
Biological Sciences	2	\$151,946	20	\$1,399,399	16	\$1,603,363
Chemistry & Biochemistry	7	\$989,661	18	\$1,883,473	16	\$1,547,630
COBRE: Center for Colon Cancer Research	10	\$2,361,028	11	\$2,366,028	0	\$0
Geological Sciences	2	\$14,318	24	\$1,331,183	23	\$974,883
Mathematics	0	\$0	1	\$60,000	1	\$48,727
Physics & Astronomy	2	\$40,000	10	\$433,200	3	\$197,070
Science & Math Administration	0	\$0	5	\$665,091	6	\$743,043
Science Education, Center for	1	\$12,400	1	\$12,400	0	\$0
Statistics	0	\$0	9	\$259,255	5	\$231,906
Total :	29	\$4,514,907	114	\$12,509,545	81	\$6,552,331
Social Work, College of	4	\$736,719	35	\$1,669,202	36	\$1,425,594
Total :	4	\$736,719	35	\$1,669,202	36	\$1,425,594
Student Affairs, Division of						
Student Life	0	\$0	2	\$132,277	1	\$113,326
Total :	0	\$0	2	\$132,277	1	\$113,326
University Libraries						
Thomas Cooper Library	0	\$0	0	\$0	1	\$1,020
Total :	0	\$0	0	\$0	1	\$1,020
Report TOTAL :	143	\$21,564,866	632	\$59,560,418	589	\$44,738,453

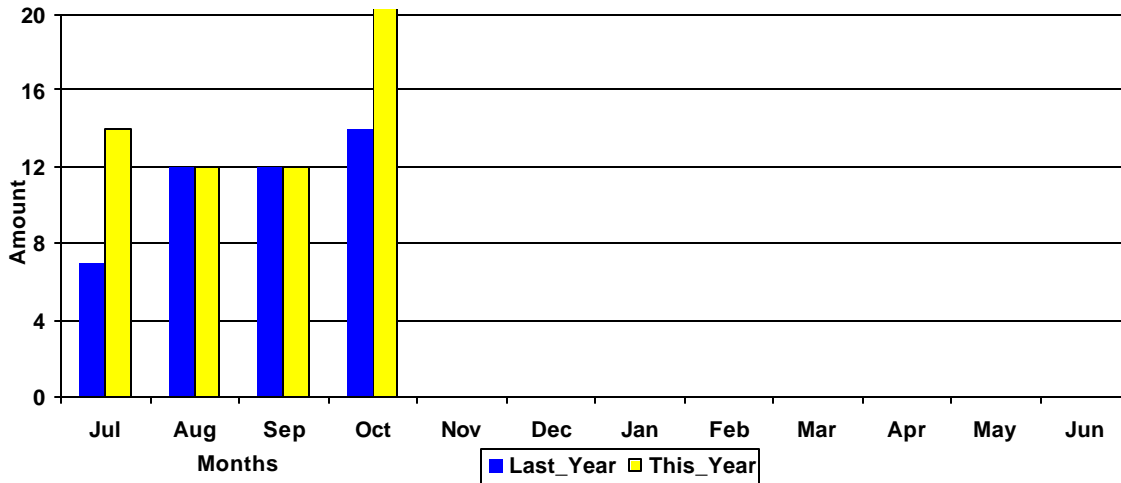
* - Biochemistry represents faculty with a dual appointment to the Department of Chemistry and the School of Medicine. The figures are included in both division totals but only once in the overall total.

Funding Agency Comparison Report

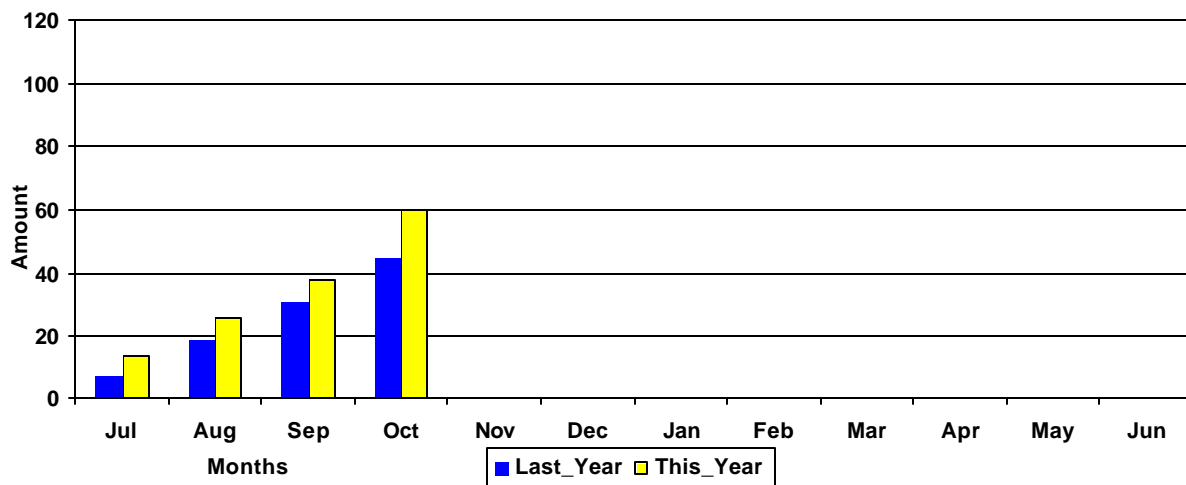
Year-To-Date -OCTOBER - 2002

	<u>FISCAL YEAR - 2003</u>		<u>FISCAL YEAR - 2002</u>	
NSF Awards	42	\$4,184,470	29	\$2,375,615
NIH Awards	81	\$9,574,506	47	\$4,796,446
Dept. Of Defense Awards	27	\$6,418,480	19	\$2,772,106
Dept. Of Education Awards	42	\$6,621,319	41	\$6,378,972
Dept. Of Energy Awards	18	\$3,088,386	20	\$3,835,369
State and Municipalities Awards	76	\$2,171,753	81	\$4,808,069
Non Profit Awards	80	\$2,754,627	80	\$2,527,028
Business and Industry Awards	69	\$802,030	79	\$1,182,215

Amounts Awarded
(In millions of dollars)



Cumulative Amounts Awarded
(In millions of dollars)



PROPOSALS BY DEPARTMENT

DEPARTMENT	CURRENT MONTH OCTOBER - 2002		YEAR TO DATE FY 2003		YEAR TO DATE FY 2002	
Business, Moore School of						
Business Administration - Division of Research	2	\$6,431	20	\$234,569	35	\$769,528
Small Business Development Center	0	\$0	3	\$1,352,178	4	\$1,311,271
Total :	2	\$6,431	23	\$1,586,747	39	\$2,080,799
Education, College of						
Education Leadership & Policies	0	\$0	1	\$130,631	5	\$230,080
Educational Psychology	0	\$0	5	\$162,849	9	\$270,380
Instruction & Teacher Education	3	\$39,483	5	\$69,278	3	\$95,743
SC Educational Policy Center	0	\$0	0	\$0	1	\$1,000
School Improvement Council Assistance	0	\$0	0	\$0	1	\$25,250
USC Children's Center	0	\$0	1	\$29,000	0	\$0
Total :	3	\$39,483	12	\$391,758	19	\$622,453
Engineering & Information Technology,						
Chemical Engineering	8	\$2,026,953	17	\$2,860,808	14	\$1,206,342
Civil & Environmental Engineering	2	\$416,550	8	\$786,200	7	\$457,660
Computer Science & Engineering	3	\$80,893	16	\$1,027,710	14	\$827,910
Electrical Engineering	4	\$1,695,147	10	\$2,439,583	6	\$3,812,738
Engineering & Information Technology, College of	0	\$0	2	\$71,004	1	\$36,836
Mechanical Engineering	2	\$569,999	9	\$1,139,578	9	\$510,877
SC Alliance for Minority Participation (SCAMP)	0	\$0	1	\$16,000	1	\$404,672
Total :	19	\$4,789,542	63	\$8,340,883	52	\$7,257,035
Environment, School of the						
Earth Sciences & Resources Institute	2	\$95,843	3	\$98,966	2	\$838,659
Environment, School of the	3	\$103,225	9	\$697,557	12	\$1,212,801
Total :	5	\$199,068	12	\$796,523	14	\$2,051,460
Families in Society, Institute for						
	0	\$0	11	\$2,016,691	10	\$1,040,721
Total :	0	\$0	11	\$2,016,691	10	\$1,040,721
Honors College, South Carolina						
	1	\$105,600	3	\$691,179	1	\$71,982
Total :	1	\$105,600	3	\$691,179	1	\$71,982
Hospitality, Retail & Sports Management,						
Institutional Planning						
Law Enforcement & Safety						
	0	\$0	0	\$0	1	\$21,600
Total :	0	\$0	0	\$0	1	\$21,600
Law, School of						
Law, School of	1	\$10,000	4	\$395,806	7	\$1,104,932
Total :	1	\$10,000	4	\$395,806	7	\$1,104,932

DEPARTMENT	CURRENT MONTH OCTOBER - 2002		YEAR TO DATE FY 2003		YEAR TO DATE FY 2002	
Liberal Arts, College of						
Anthropology	0	\$0	1	\$4,200	0	\$0
Archaeology & Anthropology, Institute of	0	\$0	4	\$834,524	8	\$940,209
Art	0	\$0	1	\$1,200	0	\$0
English	0	\$0	0	\$0	1	\$12,000
Geography	1	\$188,643	10	\$371,314	8	\$449,663
Government & International Studies	0	\$0	5	\$30,591	6	\$139,799
History	0	\$0	7	\$161,977	10	\$176,179
International Studies, Institute of	1	\$68,233	2	\$217,288	2	\$183,443
McKissick Museum	0	\$0	2	\$56,078	2	\$6,500
Philosophy	1	\$450,331	1	\$450,331	0	\$0
Psychology	0	\$0	26	\$1,965,954	15	\$1,063,567
Public Service & Policy Research, Institute for	2	\$62,662	4	\$142,718	8	\$2,121,845
Religious Studies	0	\$0	1	\$25,000	1	\$50,000
Sociology	0	\$0	2	\$115,084	1	\$70,661
Southern Studies, Institute for	0	\$0	1	\$10,200	1	\$28,968
Total :	5	\$769,869	67	\$4,386,459	63	\$5,242,834
Mass Communications & Information						
Journalism & Mass Communications, School of	0	\$0	8	\$464,078	7	\$168,087
Library & Information Sciences, School of	0	\$0	3	\$18,597	0	\$0
Total :	0	\$0	11	\$482,675	7	\$168,087
Medicine, School of						
Cancer Center, South Carolina	0	\$0	5	\$70,382	2	\$84,000
Cell & Developmental Biology & Anatomy	1	\$131,335	5	\$914,215	6	\$1,095,458
Cell Biology & Neurosciences	0	\$0	0	\$0	1	\$108,000
Family & Preventive Medicine	0	\$0	3	\$152,438	4	\$451,856
Internal Medicine	0	\$0	6	\$860,662	10	\$389,541
Medicine, School of - (Dean)	0	\$0	0	\$0	1	\$27,493
Neuropsychiatry	1	\$84,822	1	\$84,822	6	\$817,565
Obstetrics & Gynecology	0	\$0	1	\$71,165	0	\$0
Pathology	0	\$0	0	\$0	5	\$538,378
Pathology & Microbiology	2	\$264,907	9	\$928,243	3	\$434,719
Pediatrics/Developmental Disabilities, Center for	1	\$97,497	5	\$561,474	10	\$1,696,628
Pharmacology, Physiology & Neuroscience	2	\$1,192,470	13	\$2,254,876	6	\$655,595
Research & Special Projects	0	\$0	3	\$104,650	2	\$9,358
Surgery	1	\$65,000	2	\$86,315	4	\$265,323
Total :	8	\$1,836,031	53	\$6,089,242	60	\$6,573,914
Nursing, College of						
Academic & Student Affairs	0	\$0	1	\$28,470	2	\$85,390
Administrative & Clinical Nursing	1	\$8,181	3	\$851,210	2	\$526,790
Family & Community Health Nursing	0	\$0	0	\$0	5	\$533,876
Total :	1	\$8,181	4	\$879,680	9	\$1,146,056
Pharmacy, College of						
Basic Pharmaceutical Sciences	3	\$277,358	7	\$665,448	4	\$926,610
Pharmacy & Health Outcomes Sci.	0	\$0	0	\$0	1	\$30,000
Pharmacy Practice	0	\$0	0	\$0	2	\$44,835
Total :	3	\$277,358	7	\$665,448	7	\$1,001,445

DEPARTMENT	CURRENT MONTH OCTOBER - 2002		YEAR TO DATE FY 2003		YEAR TO DATE FY 2002	
Provost, Office of the						
TRIO Programs	1	\$281,288	2	\$591,752	0	\$0
Total :	1	\$281,288	2	\$591,752	0	\$0
Public Health, Norman J. Arnold School of						
Communication Sciences & Disorders	1	\$4,000	2	\$11,141	1	\$7,917
Environmental Health Sciences	0	\$0	8	\$1,605,903	8	\$762,998
Epidemiology & Biostatistics	4	\$120,137	13	\$529,788	11	\$799,814
Exercise Science	2	\$260,901	7	\$1,080,146	9	\$508,763
Health Administration	1	\$2,500	15	\$597,938	9	\$176,878
Health Promotion, Education & Behavior	3	\$191,824	32	\$2,420,425	15	\$308,203
Health Services & Policy Research, Center for	0	\$0	2	\$104,094	3	\$303,195
Prevention Research Center	0	\$0	9	\$706,957	3	\$365,527
Public Health, Norman J. Arnold School of - (Dean)	0	\$0	3	\$2,143,199	0	\$0
Total :	11	\$579,362	91	\$9,199,591	59	\$3,233,295
Regional and Four-Year Campuses						
USC Aiken	2	\$38,471	10	\$2,895,750	9	\$574,997
USC Beaufort	3	\$1,512,001	10	\$3,012,676	5	\$115,923
USC Lancaster	1	\$80,000	4	\$560,434	3	\$317,360
USC Salkehatchie	3	\$23,645	6	\$50,146	0	\$0
USC Spartanburg	4	\$2,532,043	10	\$2,994,734	18	\$977,457
USC Sumter	0	\$0	0	\$0	2	\$192,079
USC Union	0	\$0	1	\$222,948	0	\$0
Total :	13	\$4,186,160	41	\$9,736,688	37	\$2,177,816
Research, Vice President for						
Biomedical Research Infrastructure Network (BRIN)	0	\$0	1	\$2,000,000	0	\$0
NanoCenter	1	\$3,091,621	5	\$3,807,978	7	\$3,224,559
Technology Incubator	0	\$0	1	\$160,000	0	\$0
Total :	1	\$3,091,621	7	\$5,967,978	7	\$3,224,559
Science and Mathematics, College of						
Baruch Institute	4	\$70,000	10	\$1,097,343	10	\$693,327
Biological Sciences	2	\$604,289	24	\$3,885,816	23	\$2,349,542
Chemistry & Biochemistry	10	\$1,291,327	24	\$3,143,231	16	\$3,643,496
Geological Sciences	5	\$124,284	19	\$1,753,796	15	\$1,081,771
Mathematics	6	\$251,836	10	\$659,658	9	\$336,046
Physics & Astronomy	1	\$119,174	15	\$1,317,883	9	\$1,400,236
Science Education, Center for	0	\$0	1	\$12,400	3	\$253,918
Statistics	8	\$590,436	14	\$799,506	7	\$138,117
Total :	36	\$3,051,346	117	\$12,669,633	92	\$9,896,453
Social Work, College of						
	2	\$196,400	34	\$983,944	31	\$612,399
Total :	2	\$196,400	34	\$983,944	31	\$612,399
Student Affairs, Division of						
Housing & Residential Services	0	\$0	0	\$0	1	\$25,000
Student Health	0	\$0	1	\$6,788	1	\$13,531
Student Life	0	\$0	1	\$4,271	2	\$27,515

DEPARTMENT		CURRENT MONTH OCTOBER - 2002		YEAR TO DATE FY 2003		YEAR TO DATE FY 2002	
	Total :	0	\$0	2	\$11,059	4	\$66,046
University 101		0	\$0	1	\$23,925	0	\$0
	Total :	0	\$0	1	\$23,925	0	\$0
University Libraries							
Thomas Cooper Library		0	\$0	1	\$4,643	1	\$90,000
	Total :	0	\$0	1	\$4,643	1	\$90,000
Report TOTAL :		112	\$19,427,740	566	\$65,912,304	520	\$47,683,886