

**MEMORANDUM**

To: Anthony M. Boccanfuso, Ph.D.  
Director

From: R. Steven Etheredge  
Associate Director

RE: Report of Sponsored Program Activity for October 2001

Date: November 12, 2001

The University received awards totaling \$11.6 million during the month, a 27% increase over last October (\$9.2 million). Thus far in the fiscal year, award dollars are 10% behind last year, \$43.0 million vs. \$47.8 million.

Faculty submitted 131 proposals requesting \$15.3 million during October. SPAR has processed 527 proposals requesting \$50.1 million during the first four months of FY02. This compares to last year's totals of 552 and \$60.8 million.

cc: K. McCoy

# Sponsored Programs and Research Monthly Report

## SUMMARY OF AWARDS OCTOBER - 2001

### By Purpose

Research Awards - SPAR	\$7,603,279
Research Awards - USCRF	\$1,862,943
Training Awards	\$149,790
Service Awards	\$1,855,385
Equipment Awards	\$35,483
Graduate Assistantship Awards	\$115,894
<b>TOTAL:</b>	<b>\$11,622,774</b>

### By Source

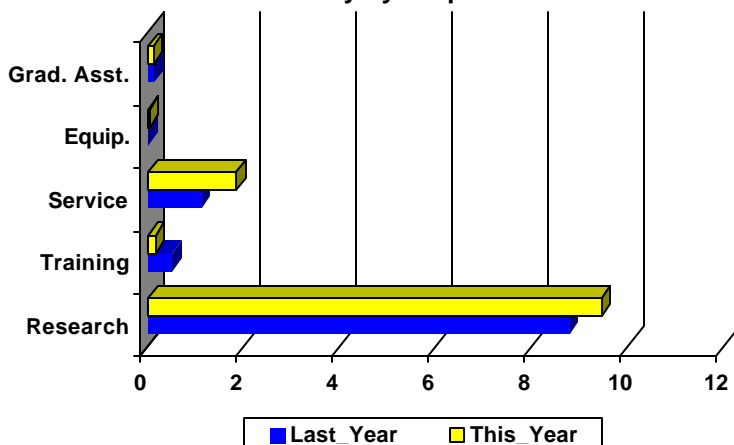
Federal Awards - SPAR	\$7,054,154
Federal Awards - USCRF	\$1,811,171
Private Awards - SPAR	\$416,091
Private Awards - USCRF	\$188,762
State Awards	\$2,152,596
<b>TOTAL:</b>	<b>\$11,622,774</b>

### COMPARISON OF AMOUNT RECEIVED

OCTOBER - 2001 vs. OCTOBER - 2000

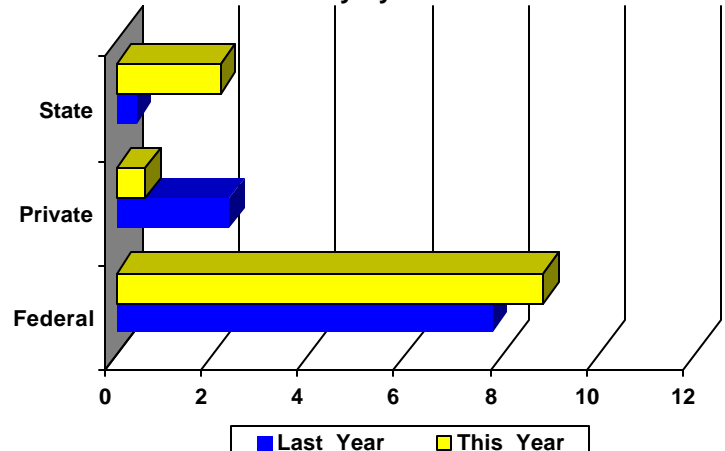
Amounts Received  
(In millions of dollars)

Summary by Purpose



Amounts Received  
(In millions of dollars)

Summary by Source



## AWARDS BY DEPARTMENT

DEPARTMENT	CURRENT MONTH OCTOBER - 2001		YEAR TO DATE FY 2002		YEAR TO DATE FY 2001	
<b>Business and Finance</b>						
Campus Services	0	\$0	0	\$0	2	\$12,000
Recycling & Waste Management	0	\$0	1	\$9,970	0	\$0
<b>Total :</b>	<b>0</b>	<b>\$0</b>	<b>1</b>	<b>\$9,970</b>	<b>2</b>	<b>\$12,000</b>
<b>College of Criminal Justice</b>						
	0	\$0	1	\$32,596	7	\$112,950
<b>Total :</b>	<b>0</b>	<b>\$0</b>	<b>1</b>	<b>\$32,596</b>	<b>7</b>	<b>\$112,950</b>
<b>College of Education</b>						
Education Leadership & Policies	0	\$0	3	\$186,044	12	\$542,353
Educational Psychology	1	\$800	6	\$299,371	5	\$473,164
Instruction & Teacher Education	3	\$51,000	8	\$1,548,110	5	\$1,060,372
Physical Education	0	\$0	0	\$0	1	\$122,200
SC Educational Policy Center	0	\$0	0	\$0	2	\$200,000
School Improvement Council Assistance	1	\$1,000	1	\$1,000	0	\$0
<b>Total :</b>	<b>5</b>	<b>\$52,800</b>	<b>18</b>	<b>\$2,034,525</b>	<b>25</b>	<b>\$2,398,089</b>
<b>College of Engineering &amp; Information</b>						
Chemical Engineering	1	\$8,000	11	\$1,542,326	9	\$346,215
Civil & Environmental Engineering	3	\$507,379	6	\$718,006	6	\$1,141,743
Computer Science & Engineering	1	\$4,880	7	\$81,708	7	\$157,196
Electrical Engineering	4	\$2,164,305	6	\$2,244,938	7	\$4,692,679
Engineering & Information Technology, College of	2	\$1,527,495	2	\$1,527,495	1	\$48,862
Mechanical Engineering	2	\$92,215	9	\$590,150	12	\$1,052,038
SCAMP	0	\$0	5	\$424,672	4	\$902,200
<b>Total :</b>	<b>13</b>	<b>\$4,304,274</b>	<b>46</b>	<b>\$7,129,295</b>	<b>46</b>	<b>\$8,340,933</b>
<b>College of Hospitality, Retail &amp; Sports</b>						
Center For Retailing Studies	0	\$0	1	\$11,429	0	\$0
Hospitality, Retail & Sports Mgmt - Dean's Office	0	\$0	1	\$62,500	0	\$0
Sport Administration	0	\$0	0	\$0	1	\$13,000
<b>Total :</b>	<b>0</b>	<b>\$0</b>	<b>2</b>	<b>\$73,929</b>	<b>1</b>	<b>\$13,000</b>
<b>College of Journalism &amp; Mass</b>						
	0	\$0	7	\$167,495	12	\$303,435
<b>Total :</b>	<b>0</b>	<b>\$0</b>	<b>7</b>	<b>\$167,495</b>	<b>12</b>	<b>\$303,435</b>
<b>College of Liberal Arts</b>						
Archaeology & Anthropology, Institute of	1	\$15,898	5	\$353,524	4	\$84,441
Art	0	\$0	0	\$0	1	\$2,500
English	1	\$10,000	2	\$45,000	1	\$750
Geography	4	\$124,433	10	\$525,823	9	\$558,807
Government & International Studies	1	\$40,000	4	\$49,298	9	\$64,378
History	1	\$1,000	10	\$40,243	18	\$124,099
Institute for Southern Studies	0	\$0	1	\$27,778	1	\$50,000
International Studies, Institute of	0	\$0	0	\$0	2	\$128,997
Liberal Arts Dean's Office	0	\$0	1	\$6,000	0	\$0
McKissick Museum	1	\$2,000	3	\$7,750	3	\$67,859
Naval Science	0	\$0	2	\$4,000	1	\$600

DEPARTMENT	CURRENT MONTH OCTOBER - 2001		YEAR TO DATE FY 2002		YEAR TO DATE FY 2001	
Philosophy	1	\$144	2	\$14,894	1	\$18,450
Psychology	0	\$0	13	\$357,388	24	\$567,969
Public Service & Policy Research, Institute for	4	\$312,897	9	\$369,074	13	\$336,329
Religious Studies	0	\$0	1	\$50,000	0	\$0
Sociology	0	\$0	0	\$0	2	\$168,976
Trio Programs	0	\$0	5	\$1,182,606	5	\$1,146,226
<b>Total :</b>	<b>14</b>	<b>\$506,372</b>	<b>68</b>	<b>\$3,033,378</b>	<b>94</b>	<b>\$3,320,381</b>
<b>College of Library &amp; Information Science</b>	0	\$0	3	\$45,185	5	\$48,642
<b>Total :</b>	<b>0</b>	<b>\$0</b>	<b>3</b>	<b>\$45,185</b>	<b>5</b>	<b>\$48,642</b>
<b>College of Nursing</b>						
Academic & Student Affairs	1	\$16,007	10	\$756,296	8	\$755,598
Administrative & Clinical Nursing	0	\$0	1	\$86,003	2	\$92,144
Family & Community Health Nursing	0	\$0	1	\$7,725	5	\$241,841
<b>Total :</b>	<b>1</b>	<b>\$16,007</b>	<b>12</b>	<b>\$850,024</b>	<b>15</b>	<b>\$1,089,583</b>
<b>College of Pharmacy</b>						
Basic Pharmaceutical Sciences	0	\$0	3	\$130,141	3	\$107,843
Clinical Pharmacy	1	\$26,412	1	\$26,412	1	\$5,000
Palmetto Poison Center	0	\$0	2	\$285,881	0	\$0
Pharmacy Practice	1	\$20,118	2	\$40,243	7	\$131,352
<b>Total :</b>	<b>2</b>	<b>\$46,530</b>	<b>8</b>	<b>\$482,677</b>	<b>11</b>	<b>\$244,195</b>
<b>College of Science and Math</b>						
Baruch Institute	2	\$40,549	10	\$1,209,809	11	\$990,523
Biological Research & Technology, Institute for	0	\$0	1	\$2,200	0	\$0
Biological Sciences	3	\$376,946	16	\$1,603,363	14	\$951,728
Center For Science Education	0	\$0	0	\$0	1	\$22,809
Chemistry & Biochemistry	5	\$201,689	16	\$1,562,164	25	\$1,676,525
Computer Science (moved to Engineering)	0	\$0	0	\$0	1	\$19,266
EPSCoR (moved to VP for Research)	0	\$0	0	\$0	4	\$191,175
Geological Sciences	4	\$39,266	23	\$1,045,419	12	\$646,059
Mathematics	1	\$48,727	1	\$48,727	7	\$472,247
Physics & Astronomy	1	\$91,000	3	\$197,070	12	\$706,803
Science & Math Administration	1	\$188,760	6	\$743,043	6	\$904,500
Statistics	0	\$0	5	\$231,906	6	\$302,080
<b>Total :</b>	<b>17</b>	<b>\$986,937</b>	<b>81</b>	<b>\$6,643,701</b>	<b>99</b>	<b>\$6,883,715</b>
<b>College of Social Work</b>	6	\$155,047	36	\$1,427,594	37	\$2,029,231
<b>Total :</b>	<b>6</b>	<b>\$155,047</b>	<b>36</b>	<b>\$1,427,594</b>	<b>37</b>	<b>\$2,029,231</b>
<b>Darla Moore School of Business</b>						
Business Administration - Division Of Research	6	\$44,388	39	\$782,273	33	\$934,664
Small Business Development Center	2	\$157,500	3	\$187,500	4	\$130,456
<b>Total :</b>	<b>8</b>	<b>\$201,888</b>	<b>42</b>	<b>\$969,773</b>	<b>37</b>	<b>\$1,065,120</b>
<b>Division of Student Affairs</b>						
International Programs for Students	0	\$0	0	\$0	1	\$3,000
Student Life	1	\$113,326	1	\$113,326	2	\$211,571

DEPARTMENT	CURRENT MONTH OCTOBER - 2001		YEAR TO DATE FY 2002		YEAR TO DATE FY 2001	
<b>Total :</b>	<b>1</b>	<b>\$113,326</b>	<b>1</b>	<b>\$113,326</b>	<b>3</b>	<b>\$214,571</b>
<b>Institute for Families in Society</b>						
Families in Society, Institute for	2	\$16,859	9	\$1,422,983	12	\$1,366,016
<b>Total :</b>	<b>2</b>	<b>\$16,859</b>	<b>9</b>	<b>\$1,422,983</b>	<b>12</b>	<b>\$1,366,016</b>
<b>Institutional Planning</b>						
<b>Law School</b>						
Law School	0	\$0	4	\$355,237	5	\$549,576
<b>Total :</b>	<b>0</b>	<b>\$0</b>	<b>4</b>	<b>\$355,237</b>	<b>5</b>	<b>\$549,576</b>
<b>Norman J. Arnold School of Public Health</b>						
Center for Health Services & Policy Research	2	\$53,565	4	\$201,300	0	\$0
Communication Sciences & Disorders	0	\$0	1	\$7,917	0	\$0
Environmental Health Sciences	12	\$639,721	39	\$1,493,892	11	\$670,661
Epidemiology & Biostatistics	5	\$662,181	16	\$2,318,583	14	\$1,579,543
Exercise Science	2	\$38,661	7	\$903,636	10	\$1,757,386
Health Administration	3	\$484,648	10	\$596,827	19	\$601,697
Health Promotion & Education	1	\$3,012	17	\$250,108	16	\$374,932
Norman J. Arnold School of Public Health - Dean	2	\$708,630	2	\$708,630	1	\$29,697
Prevention Research Center	3	\$438,092	16	\$2,745,394	16	\$2,314,089
<b>Total :</b>	<b>30</b>	<b>\$3,028,510</b>	<b>112</b>	<b>\$9,226,287</b>	<b>87</b>	<b>\$7,328,005</b>
<b>Regional and Four-Year Campuses</b>						
Regional Campuses & Continuing Education	0	\$0	0	\$0	1	\$32,100
USC Aiken	4	\$409,088	11	\$808,397	11	\$882,111
USC Beaufort	1	\$27,582	5	\$167,078	7	\$420,884
USC Lancaster	1	\$19,378	3	\$240,832	3	\$403,982
USC Salkehatchie	0	\$0	2	\$221,454	3	\$426,764
USC Spartanburg	13	\$214,977	32	\$1,021,869	22	\$1,039,098
USC Sumter	1	\$27,754	4	\$250,208	5	\$402,496
USC Union	0	\$0	1	\$224,471	1	\$198,582
<b>Total :</b>	<b>20</b>	<b>\$698,779</b>	<b>58</b>	<b>\$2,934,309</b>	<b>53</b>	<b>\$3,806,017</b>
<b>School of Medicine</b>						
Basic Science Research	1	\$209,244	1	\$209,244	0	\$0
Biochemistry *	5	\$398,031	12	\$1,382,539	11	\$1,006,556
Cell Biology & Neurosciences	3	\$156,302	5	\$375,368	4	\$455,234
Developmental Biology & Anatomy	1	\$70,000	5	\$399,566	2	\$367,672
Family & Preventive Medicine	3	\$343,474	5	\$525,691	3	\$754,543
Health & Safety	0	\$0	1	\$9,600	1	\$10,000
Internal Medicine	2	\$1,234	14	\$362,671	14	\$225,980
Medicine Library	1	\$134,304	2	\$138,184	0	\$0
Microbiology & Immunology	0	\$0	4	\$511,016	5	\$682,421
Neuropsychiatry	0	\$0	4	\$95,177	5	\$268,390
Obstetrics & Gynecology	0	\$0	0	\$0	2	\$70,525
Orthopaedic Surgery	0	\$0	0	\$0	2	\$7,250
Pathology	0	\$0	1	\$15,000	1	\$7,500
Pediatrics/Center for Developmental Disabilities	1	\$7,600	5	\$1,100,708	20	\$2,687,174
Pharmacology & Physiology	0	\$0	0	\$0	4	\$120,063
Radiology	0	\$0	1	\$401,974	1	\$400,313

DEPARTMENT	CURRENT MONTH OCTOBER - 2001		YEAR TO DATE FY 2002		YEAR TO DATE FY 2001	
Research & Special Projects	0	\$0	7	\$284,228	1	\$37,800
School of Medicine Graduate Program	0	\$0	0	\$0	2	\$35,360
South Carolina Cancer Center	0	\$0	2	\$84,000	1	\$6,295
Surgery	1	\$12,946	6	\$161,554	0	\$0
<b>Total :</b>	<b>18</b>	<b>\$1,333,135</b>	<b>75</b>	<b>\$6,056,520</b>	<b>79</b>	<b>\$7,143,076</b>
<b>School of the Environment</b>						
Earth Sciences & Resources Institute	1	\$178,999	3	\$226,274	2	\$43,998
School of the Environment	0	\$0	6	\$223,030	2	\$3,964
<b>Total :</b>	<b>1</b>	<b>\$178,999</b>	<b>9</b>	<b>\$449,304</b>	<b>4</b>	<b>\$47,962</b>
<b>South Carolina Honors College</b>						
	0	\$0	1	\$102,676	0	\$0
<b>Total :</b>	<b>0</b>	<b>\$0</b>	<b>1</b>	<b>\$102,676</b>	<b>0</b>	<b>\$0</b>
<b>University Libraries</b>						
Thomas Cooper Library	0	\$0	1	\$1,020	1	\$213,337
<b>Total :</b>	<b>0</b>	<b>\$0</b>	<b>1</b>	<b>\$1,020</b>	<b>1</b>	<b>\$213,337</b>
<b>Vice President for Research</b>						
NanoCenter	0	\$0	3	\$377,999	0	\$0
Sponsored Programs & Research	0	\$0	1	\$24,751	1	\$20,000
Vice President for Research	0	\$0	0	\$0	1	\$2,300,000
Vice President for Research - General	2	\$381,342	3	\$431,342	0	\$0
<b>Total :</b>	<b>2</b>	<b>\$381,342</b>	<b>7</b>	<b>\$834,092</b>	<b>2</b>	<b>\$2,320,000</b>
<b>Report TOTAL :</b>	<b>135</b>	<b>\$11,622,774</b>	<b>590</b>	<b>\$43,013,357</b>	<b>626</b>	<b>\$47,843,278</b>

\* - Biochemistry represents faculty with a dual appointment to the Department of Chemistry and the School of Medicine. The figures are included in both division totals but only once in the overall total.

# Funding Agency Comparison Report

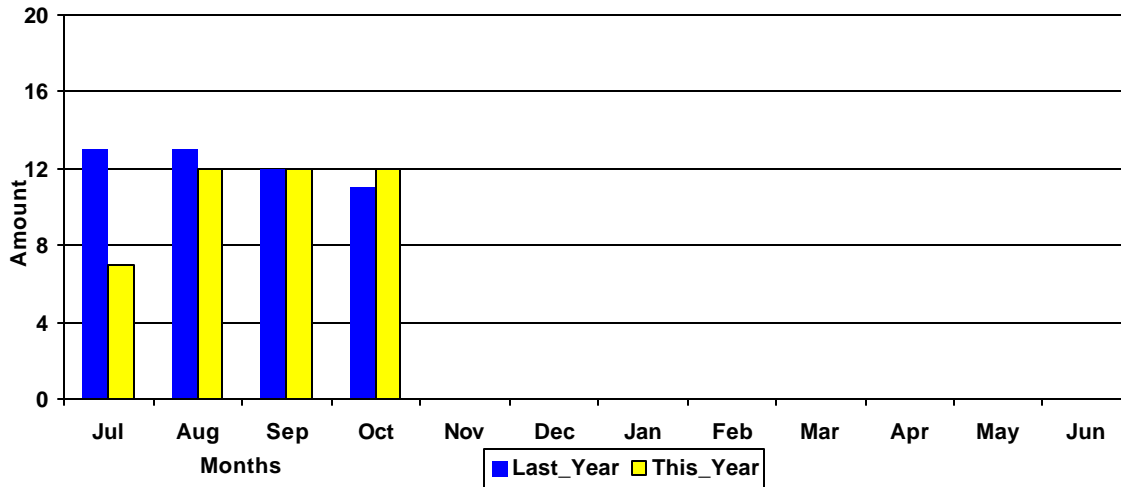
## Year-To-Date -OCTOBER - 2001

### FISCAL YEAR - 2002

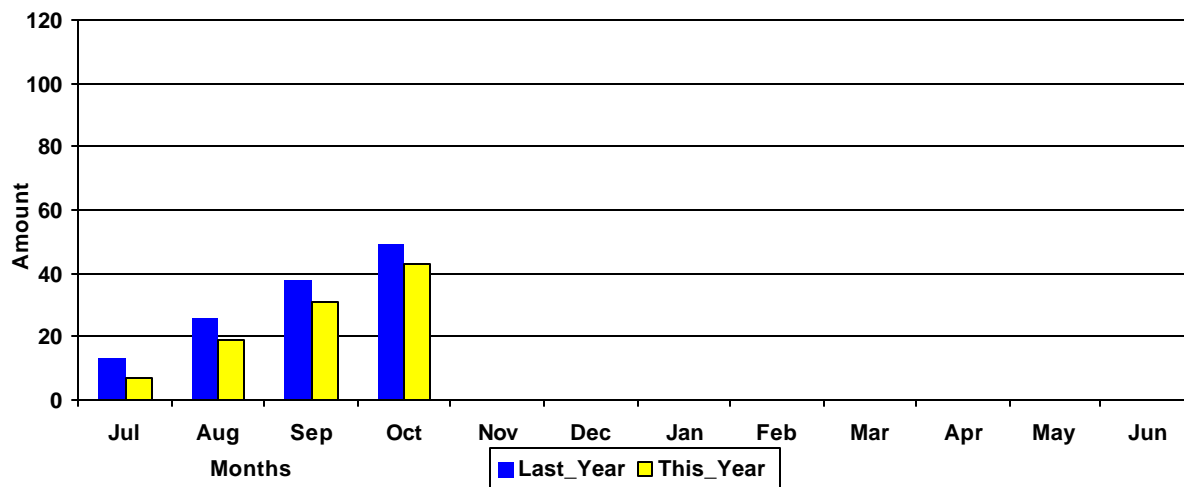
### FISCAL YEAR - 2001

<b>NSF Awards</b>	29	\$2,375,615	40	\$2,798,164
<b>NIH Awards</b>	49	\$5,228,452	49	\$5,938,446
<b>Dept. Of Defense Awards</b>	19	\$2,786,174	25	\$6,368,842
<b>Dept. Of Education Awards</b>	42	\$6,377,243	42	\$7,241,216
<b>Dept. Of Energy Awards</b>	16	\$1,809,346	14	\$948,861
<b>SCUREF Awards from DOE</b>	3	\$198,025	3	\$81,343
<b>State and Municipalities Awards</b>	82	\$4,829,794	102	\$6,677,294

**Amounts Awarded  
(In millions of dollars)**



**Cumulative Amounts Awarded  
(In millions of dollars)**



# PROPOSALS BY DEPARTMENT

DEPARTMENT	CURRENT MONTH OCTOBER - 2001		YEAR TO DATE FY 2002		YEAR TO DATE FY 2001	
<b>Business and Finance</b>						
Campus Services	0	\$0	0	\$0	1	\$2,000
<b>Total :</b>	<b>0</b>	<b>\$0</b>	<b>0</b>	<b>\$0</b>	<b>1</b>	<b>\$2,000</b>
<b>College of Criminal Justice</b>						
	0	\$0	1	\$33,917	5	\$196,223
<b>Total :</b>	<b>0</b>	<b>\$0</b>	<b>1</b>	<b>\$33,917</b>	<b>5</b>	<b>\$196,223</b>
<b>College of Education</b>						
Education Leadership & Policies	0	\$0	5	\$230,080	8	\$130,789
Educational Psychology	3	\$69,652	9	\$270,380	4	\$221,062
Instruction & Teacher Education	2	\$75,743	3	\$95,743	8	\$2,718,700
Physical Education	0	\$0	0	\$0	1	\$122,200
SC Educational Policy Center	1	\$1,000	1	\$1,000	2	\$92,816
School Improvement Council Assistance	1	\$25,250	1	\$25,250	0	\$0
USC Children's Center	0	\$0	0	\$0	1	\$30,000
<b>Total :</b>	<b>7</b>	<b>\$171,645</b>	<b>19</b>	<b>\$622,453</b>	<b>24</b>	<b>\$3,315,567</b>
<b>College of Engineering &amp; Information</b>						
Chemical Engineering	6	\$380,198	14	\$1,206,342	10	\$1,386,366
Civil & Environmental Engineering	1	\$55,791	7	\$457,660	7	\$622,010
Computer Science & Engineering	6	\$622,149	14	\$799,427	11	\$529,219
Electrical Engineering	2	\$4,071,806	6	\$5,082,709	6	\$5,606,827
Engineering & Information Technology, College of	0	\$0	1	\$36,836	0	\$0
Mechanical Engineering	4	\$255,511	9	\$510,877	19	\$2,343,796
SCAMP	0	\$0	1	\$404,672	2	\$812,000
<b>Total :</b>	<b>19</b>	<b>\$5,385,455</b>	<b>52</b>	<b>\$8,498,523</b>	<b>55</b>	<b>\$11,300,218</b>
<b>College of Hospitality, Retail &amp; Sports</b>						
Sport Administration	0	\$0	0	\$0	1	\$13,000
<b>Total :</b>	<b>0</b>	<b>\$0</b>	<b>0</b>	<b>\$0</b>	<b>1</b>	<b>\$13,000</b>
<b>College of Journalism &amp; Mass</b>						
	0	\$0	7	\$168,087	13	\$433,556
<b>Total :</b>	<b>0</b>	<b>\$0</b>	<b>7</b>	<b>\$168,087</b>	<b>13</b>	<b>\$433,556</b>
<b>College of Liberal Arts</b>						
Anthropology	0	\$0	0	\$0	1	\$72,250
Archaeology & Anthropology, Institute of	5	\$843,257	8	\$940,209	6	\$1,096,273
Art	0	\$0	0	\$0	1	\$2,500
English	0	\$0	1	\$12,000	3	\$19,750
Geography	3	\$275,259	8	\$449,663	4	\$273,720
Government & International Studies	2	\$82,806	6	\$139,799	6	\$92,051
History	0	\$0	10	\$176,179	14	\$211,442
Institute for Southern Studies	0	\$0	1	\$28,968	0	\$0
International Studies, Institute of	2	\$183,443	2	\$183,443	0	\$0
Linguistics Program	0	\$0	0	\$0	1	\$30,246
McKissick Museum	0	\$0	2	\$6,500	3	\$112,255
Psychology	3	\$488,550	15	\$1,063,567	26	\$6,456,422
Public Service & Policy Research, Institute for	3	\$252,352	8	\$2,121,845	14	\$746,296

DEPARTMENT	CURRENT MONTH OCTOBER - 2001		YEAR TO DATE FY 2002		YEAR TO DATE FY 2001	
Religious Studies	0	\$0	1	\$50,000	0	\$0
Sociology	0	\$0	1	\$70,661	6	\$228,405
Trio Programs	1	\$289,405	3	\$753,987	2	\$367,697
<b>Total :</b>	<b>19</b>	<b>\$2,415,072</b>	<b>66</b>	<b>\$5,996,821</b>	<b>87</b>	<b>\$9,709,307</b>
<b>College of Library &amp; Information Science</b>	0	\$0	3	\$52,839	4	\$57,741
<b>Total :</b>	<b>0</b>	<b>\$0</b>	<b>3</b>	<b>\$52,839</b>	<b>4</b>	<b>\$57,741</b>
<b>College of Nursing</b>						
Academic & Student Affairs	0	\$0	2	\$85,390	4	\$176,096
Administrative & Clinical Nursing	1	\$50,400	2	\$526,790	3	\$18,500
Family & Community Health Nursing	1	\$21,000	5	\$540,386	1	\$2,408,860
<b>Total :</b>	<b>2</b>	<b>\$71,400</b>	<b>9</b>	<b>\$1,152,566</b>	<b>8</b>	<b>\$2,603,456</b>
<b>College of Pharmacy</b>						
Basic Pharmaceutical Sciences	2	\$384,735	4	\$926,610	6	\$840,309
Clinical Pharmacy	1	\$26,412	2	\$44,835	2	\$33,228
Palmetto Poison Center	0	\$0	0	\$0	1	\$128,957
Pharmacy Practice	0	\$0	1	\$30,000	8	\$274,970
<b>Total :</b>	<b>3</b>	<b>\$411,147</b>	<b>7</b>	<b>\$1,001,445</b>	<b>17</b>	<b>\$1,277,464</b>
<b>College of Science and Math</b>						
Baruch Institute	0	\$0	10	\$693,327	5	\$480,899
Biological Sciences	5	\$470,242	23	\$2,349,542	23	\$2,011,488
Center For Science Education	2	\$241,518	3	\$253,918	2	\$61,501
Chemistry & Biochemistry	3	\$450,203	17	\$3,788,164	30	\$5,159,495
EPSCoR (moved to VP for Research)	0	\$0	0	\$0	1	\$40,000
Geological Sciences	1	\$100,000	15	\$1,081,771	15	\$1,532,644
Mathematics	6	\$206,895	9	\$336,046	2	\$261,035
Physics & Astronomy	2	\$468,730	9	\$1,688,190	14	\$1,070,899
Science & Math Administration	0	\$0	0	\$0	1	\$284,943
Statistics	2	\$116,224	7	\$138,117	5	\$139,342
<b>Total :</b>	<b>21</b>	<b>\$2,053,812</b>	<b>93</b>	<b>\$10,329,075</b>	<b>98</b>	<b>\$11,042,246</b>
<b>College of Social Work</b>	2	\$5,662	31	\$612,399	29	\$904,419
<b>Total :</b>	<b>2</b>	<b>\$5,662</b>	<b>31</b>	<b>\$612,399</b>	<b>29</b>	<b>\$904,419</b>
<b>Darla Moore School of Business</b>						
Business Administration - Division Of Research	8	\$496,019	35	\$769,528	31	\$420,765
Small Business Development Center	0	\$0	4	\$1,311,271	3	\$2,386,650
<b>Total :</b>	<b>8</b>	<b>\$496,019</b>	<b>39</b>	<b>\$2,080,799</b>	<b>34</b>	<b>\$2,807,415</b>
<b>Division of Student Affairs</b>						
Housing & Residential Services	0	\$0	1	\$25,000	0	\$0
Student Health	1	\$13,531	1	\$13,531	0	\$0
Student Life	1	\$23,268	2	\$27,515	1	\$19,410
<b>Total :</b>	<b>2</b>	<b>\$36,799</b>	<b>4</b>	<b>\$66,046</b>	<b>1</b>	<b>\$19,410</b>
<b>Institute for Families in Society</b>						
Families in Society, Institute for	2	\$244,915	10	\$1,040,721	8	\$1,158,000

DEPARTMENT	CURRENT MONTH OCTOBER - 2001		YEAR TO DATE FY 2002		YEAR TO DATE FY 2001	
<b>Total :</b>	<b>2</b>	<b>\$244,915</b>	<b>10</b>	<b>\$1,040,721</b>	<b>8</b>	<b>\$1,158,000</b>
<b>Institutional Planning</b>						
<b>Law Enforcement &amp; Safety</b>	0	\$0	1	\$21,600	1	\$19,559
<b>Total :</b>	<b>0</b>	<b>\$0</b>	<b>1</b>	<b>\$21,600</b>	<b>1</b>	<b>\$19,559</b>
<b>Law School</b>						
Law School	1	\$51,800	7	\$1,104,932	8	\$932,607
<b>Total :</b>	<b>1</b>	<b>\$51,800</b>	<b>7</b>	<b>\$1,104,932</b>	<b>8</b>	<b>\$932,607</b>
<b>Norman J. Arnold School of Public Health</b>						
Center for Health Services & Policy Research	1	\$205,059	3	\$303,195	0	\$0
Communication Sciences & Disorders	0	\$0	1	\$7,917	0	\$0
Environmental Health Sciences	0	\$0	8	\$762,998	5	\$330,550
Epidemiology & Biostatistics	4	\$382,494	11	\$799,814	10	\$1,270,380
Exercise Science	2	\$22,255	9	\$508,763	6	\$139,321
Health Administration	2	\$5,499	9	\$176,878	16	\$95,385
Health Promotion & Education	2	\$23,009	15	\$308,203	15	\$420,081
Norman J. Arnold School of Public Health - Dean	0	\$0	0	\$0	2	\$1,338,100
Prevention Research Center	1	\$50,000	3	\$365,527	7	\$833,453
<b>Total :</b>	<b>12</b>	<b>\$688,316</b>	<b>59</b>	<b>\$3,233,295</b>	<b>61</b>	<b>\$4,427,270</b>
<b>Regional and Four-Year Campuses</b>						
USC Aiken	3	\$123,945	9	\$587,716	11	\$522,799
USC Beaufort	2	\$19,923	5	\$115,923	7	\$474,997
USC Lancaster	1	\$297,360	3	\$317,360	3	\$370,165
USC Salkehatchie	0	\$0	0	\$0	3	\$377,922
USC Spartanburg	3	\$306,111	18	\$977,457	12	\$800,060
USC Sumter	1	\$191,079	2	\$192,079	4	\$312,156
USC Union	0	\$0	0	\$0	1	\$299,376
<b>Total :</b>	<b>10</b>	<b>\$938,418</b>	<b>37</b>	<b>\$2,190,535</b>	<b>41</b>	<b>\$3,157,475</b>
<b>School of Medicine</b>						
Animal Resources Facility	0	\$0	0	\$0	1	\$128,159
Biochemistry *	2	\$369,637	4	\$602,515	3	\$661,709
Cell Biology & Neurosciences	0	\$0	1	\$108,000	3	\$398,502
Developmental Biology & Anatomy	2	\$144,500	6	\$1,095,458	7	\$1,451,449
Family & Preventive Medicine	1	\$63,348	4	\$451,856	4	\$573,302
Internal Medicine	6	\$191,291	10	\$389,541	4	\$699,514
Microbiology & Immunology	1	\$128,000	3	\$434,719	3	\$548,975
Neuropsychiatry	1	\$300,000	6	\$817,565	1	\$94,160
Obstetrics & Gynecology	0	\$0	0	\$0	1	\$59,000
Pathology	1	\$50,000	5	\$538,378	5	\$914,029
Pediatrics/Center for Developmental Disabilities	3	\$172,041	10	\$1,696,628	6	\$343,111
Pharmacology & Physiology	3	\$533,597	6	\$655,595	8	\$565,846
Radiology	0	\$0	0	\$0	1	\$400,313
Research & Special Projects	1	\$8,808	2	\$9,358	0	\$0
School of Medicine - Dean's Office	1	\$27,493	1	\$27,493	0	\$0
School of Medicine Graduate Program	0	\$0	0	\$0	2	\$17,680
South Carolina Cancer Center	0	\$0	2	\$84,000	2	\$11,711
Surgery	0	\$0	4	\$265,323	0	\$0

DEPARTMENT	CURRENT MONTH OCTOBER - 2001		YEAR TO DATE FY 2002		YEAR TO DATE FY 2001	
<b>Total :</b>	<b>22</b>	<b>\$1,988,715</b>	<b>64</b>	<b>\$7,176,429</b>	<b>51</b>	<b>\$6,867,460</b>
<b>School of the Environment</b>						
Earth Sciences & Resources Institute	0	\$0	2	\$838,659	2	\$898,187
School of the Environment	2	\$705,360	12	\$1,212,801	2	\$97,019
<b>Total :</b>	<b>2</b>	<b>\$705,360</b>	<b>14</b>	<b>\$2,051,460</b>	<b>4</b>	<b>\$995,206</b>
<b>South Carolina Honors College</b>						
	0	\$0	1	\$71,982	1	\$44,800
<b>Total :</b>	<b>0</b>	<b>\$0</b>	<b>1</b>	<b>\$71,982</b>	<b>1</b>	<b>\$44,800</b>
<b>University Libraries</b>						
Libraries & Collections	0	\$0	0	\$0	1	\$5,350
Thomas Cooper Library	0	\$0	1	\$90,000	1	\$166,878
<b>Total :</b>	<b>0</b>	<b>\$0</b>	<b>1</b>	<b>\$90,000</b>	<b>2</b>	<b>\$172,228</b>
<b>University Press</b>						
	0	\$0	0	\$0	1	\$10,000
<b>Total :</b>	<b>0</b>	<b>\$0</b>	<b>0</b>	<b>\$0</b>	<b>1</b>	<b>\$10,000</b>
<b>Vice President for Research</b>						
NanoCenter	1	\$20,000	6	\$3,079,891	0	\$0
<b>Total :</b>	<b>1</b>	<b>\$20,000</b>	<b>6</b>	<b>\$3,079,891</b>	<b>0</b>	<b>\$0</b>
<b>Report TOTAL :</b>	<b>131</b>	<b>\$15,314,899</b>	<b>527</b>	<b>\$50,073,300</b>	<b>552</b>	<b>\$60,804,917</b>

\* - Biochemistry represents faculty with a dual appointment to the Department of Chemistry and the School of Medicine. The figures are included in both division totals but only once in the overall total.