



MEMORANDUM

To: William C. Harris, Ph.D.
Director

From: Anthony M. Boccanfuso, Ph.D.
Managing Director

RE: Report of Sponsored Program Activity for November 2001

Date: December 13, 2001

The University received awards totaling \$4.8 million during the month, a 26% decrease from last November (\$6.6 million). Thus far in the fiscal year, award dollars are 11% behind last year, \$50.3 million vs. \$56.2 million.

Faculty submitted 86 proposals requesting \$12.7 million during November. SPAR has processed 613 proposals requesting \$62.4 million during the first five months of FY02. This compares to last year's totals of 659 and \$76.6 million.

	November FY02	YTD FY01	YTD FY02	YTD Change
Award Dollars	\$4,840,114	\$56,229,734	\$50,291,024	(-11%)
Proposals Submitted	86	659	613	(-7%)
Proposal Dollars Requested	\$12,717,923	\$76,634,775	\$62,521,994	(-18%)

cc: K. McCoy
R. Steven Etheredge
J. Odom

Sponsored Programs and Research Monthly Report

SUMMARY OF AWARDS NOVEMBER - 2001

By Purpose

Research Awards - SPAR	\$2,294,497
Research Awards - USCR	\$1,078,064
Training Awards	\$143,298
Service Awards	\$933,703
Equipment Awards	\$386,052
Graduate Assistantship Awards	\$4,500
TOTAL:	\$4,840,114

By Source

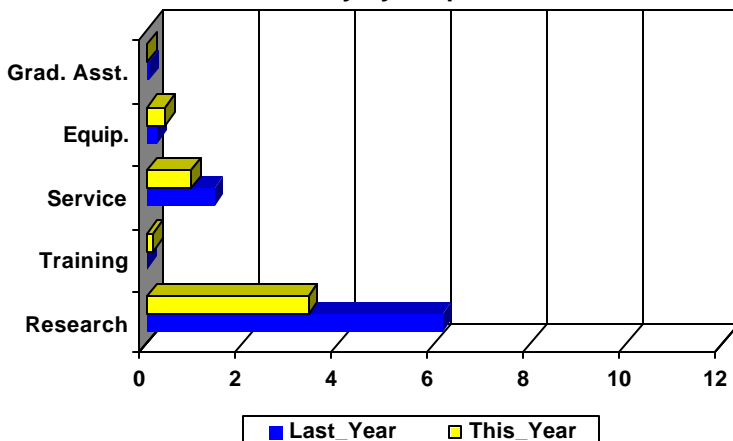
Federal Awards - SPAR	\$2,294,746
Federal Awards - USCR	\$1,060,047
Private Awards - SPAR	\$741,569
Private Awards - USCR	\$115,469
State Awards	\$628,283
TOTAL:	\$4,840,114

COMPARISON OF AMOUNT RECEIVED

NOVEMBER - 2001 vs. NOVEMBER - 2000

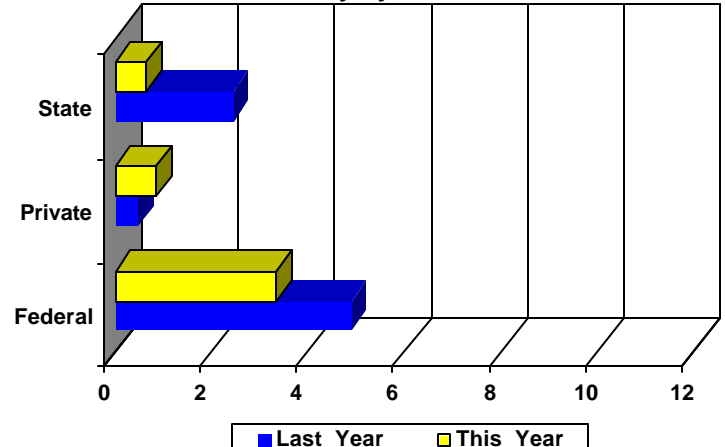
Amounts Received
(In millions of dollars)

Summary by Purpose



Amounts Received
(In millions of dollars)

Summary by Source



AWARDS BY DEPARTMENT

DEPARTMENT	CURRENT MONTH NOVEMBER - 2001		YEAR TO DATE FY 2002		YEAR TO DATE FY 2001	
Business and Finance						
Campus Services	0	\$0	0	\$0	2	\$12,000
Recycling & Waste Management	0	\$0	1	\$9,970	0	\$0
Total :	0	\$0	1	\$9,970	2	\$12,000
College of Criminal Justice						
	0	\$0	1	\$32,596	7	\$112,950
Total :	0	\$0	1	\$32,596	7	\$112,950
College of Education						
Education	1	\$27,500	1	\$27,500	0	\$0
Education Leadership & Policies	2	\$25,885	5	\$211,929	13	\$567,353
Educational Psychology	1	\$74,939	7	\$374,310	5	\$473,164
Instruction & Teacher Education	1	\$114,875	9	\$1,662,985	6	\$1,176,077
Office of Research	0	\$0	0	\$0	1	\$14,295
Physical Education	1	\$20,000	1	\$20,000	1	\$122,200
SC Educational Policy Center	1	\$15,500	1	\$15,500	4	\$320,106
School Improvement Council Assistance	1	\$10,000	2	\$11,000	0	\$0
Total :	8	\$288,699	26	\$2,323,224	30	\$2,673,195
College of Engineering & Information						
Chemical Engineering	8	\$412,177	19	\$1,954,503	14	\$769,299
Civil & Environmental Engineering	2	\$179,275	8	\$897,281	6	\$1,141,743
Computer Science & Engineering	0	\$0	7	\$81,708	9	\$172,716
Electrical Engineering	1	\$29,503	7	\$2,274,441	8	\$4,732,679
Engineering & Information Technology, College of	0	\$0	2	\$1,527,495	1	\$48,862
Mechanical Engineering	3	\$156,678	12	\$746,828	15	\$1,117,371
SCAMP	1	\$18,000	6	\$442,672	4	\$902,200
Total :	15	\$795,633	61	\$7,924,928	57	\$8,884,870
College of Hospitality, Retail & Sports						
Center For Retailing Studies	0	\$0	1	\$11,429	0	\$0
Hospitality, Retail & Sports Mgmt - Dean's Office	0	\$0	1	\$62,500	0	\$0
Sport Administration	0	\$0	0	\$0	1	\$13,000
Total :	0	\$0	2	\$73,929	1	\$13,000
College of Journalism & Mass						
	0	\$0	7	\$167,495	12	\$303,435
Total :	0	\$0	7	\$167,495	12	\$303,435
College of Liberal Arts						
Archaeology & Anthropology, Institute of	2	\$291,825	7	\$645,349	5	\$191,095
Art	0	\$0	0	\$0	1	\$2,500
English	0	\$0	2	\$45,000	1	\$750
Geography	1	\$60,761	11	\$586,584	10	\$617,564
Government & International Studies	0	\$0	4	\$49,298	9	\$64,378
History	1	\$1,000	11	\$41,243	19	\$126,099
Institute for Southern Studies	0	\$0	1	\$27,778	1	\$50,000
International Studies, Institute of	0	\$0	0	\$0	2	\$128,997
Liberal Arts Dean's Office	0	\$0	1	\$6,000	0	\$0

DEPARTMENT	CURRENT MONTH NOVEMBER - 2001		YEAR TO DATE FY 2002		YEAR TO DATE FY 2001	
McKissick Museum	0	\$0	3	\$7,750	3	\$67,859
Naval Science	0	\$0	2	\$4,000	3	\$5,600
Philosophy	0	\$0	2	\$14,894	1	\$18,450
Psychology	1	\$9,657	14	\$367,045	28	\$1,391,132
Public Service & Policy Research, Institute for	3	\$175,698	12	\$544,772	17	\$441,058
Religious Studies	0	\$0	1	\$50,000	0	\$0
Sociology	0	\$0	0	\$0	2	\$168,976
Trio Programs	1	\$3,803	6	\$1,226,137	5	\$1,106,498
Total :	9	\$542,744	77	\$3,615,850	107	\$4,380,956
College of Library & Information Science	0	\$0	3	\$45,185	5	\$48,642
Total :	0	\$0	3	\$45,185	5	\$48,642
College of Nursing						
Academic & Student Affairs	1	\$5,595	11	\$761,891	8	\$755,598
Administrative & Clinical Nursing	0	\$0	1	\$86,003	2	\$92,144
Family & Community Health Nursing	0	\$0	1	\$7,725	5	\$241,841
Total :	1	\$5,595	13	\$855,619	15	\$1,089,583
College of Pharmacy						
Basic Pharmaceutical Sciences	0	\$0	3	\$132,224	4	\$147,843
Clinical Pharmacy	1	\$18,423	2	\$44,835	3	\$55,000
Palmetto Poison Center	0	\$0	2	\$285,881	2	\$80,000
Pharmacy Practice	0	\$0	2	\$40,243	8	\$169,397
Total :	1	\$18,423	9	\$503,183	17	\$452,240
College of Science and Math						
Baruch Institute	2	\$140,538	12	\$1,350,347	13	\$1,138,179
Biological Research & Technology, Institute for	0	\$0	1	\$2,200	0	\$0
Biological Sciences	2	\$302,512	18	\$1,905,875	15	\$1,251,728
Center For Science Education	1	\$12,400	1	\$12,400	2	\$35,279
Chemistry & Biochemistry	9	\$485,428	24	\$2,033,058	33	\$1,943,589
Computer Science (moved to Engineering)	0	\$0	0	\$0	1	\$19,266
EPSCoR (moved to VP for Research)	0	\$0	0	\$0	4	\$191,175
Geological Sciences	4	\$188,799	27	\$1,234,218	14	\$839,359
Mathematics	0	\$0	1	\$48,727	7	\$472,247
Physics & Astronomy	0	\$0	3	\$197,070	12	\$706,803
Science & Math Administration	0	\$0	6	\$743,043	6	\$904,500
Statistics	2	\$4,085	7	\$235,991	9	\$331,405
Total :	20	\$1,133,762	100	\$7,762,929	116	\$7,833,530
College of Social Work	0	\$0	36	\$1,425,594	40	\$2,236,725
Total :	0	\$0	36	\$1,425,594	40	\$2,236,725
Darla Moore School of Business						
Business Administration - Division Of Research	1	\$14,633	40	\$796,906	37	\$1,032,801
Small Business Development Center	0	\$0	3	\$187,500	4	\$130,456
Total :	1	\$14,633	43	\$984,406	41	\$1,163,257
Division of Student Affairs						

DEPARTMENT	CURRENT MONTH NOVEMBER - 2001		YEAR TO DATE FY 2002		YEAR TO DATE FY 2001	
International Programs for Students	0	\$0	0	\$0	1	\$3,000
Student Life	2	\$40,626	3	\$153,952	2	\$211,571
Total :	2	\$40,626	3	\$153,952	3	\$214,571
Enrollment Management	1	\$33,047	1	\$33,047	0	\$0
Total :	1	\$33,047	1	\$33,047	0	\$0
Institute for Families in Society						
Families in Society, Institute for	1	\$10,944	10	\$1,503,060	13	\$1,504,187
Total :	1	\$10,944	10	\$1,503,060	13	\$1,504,187
Institutional Planning						
Law School						
Law School	1	\$86,508	5	\$441,745	5	\$549,576
Total :	1	\$86,508	5	\$441,745	5	\$549,576
Norman J. Arnold School of Public Health						
Center for Health Services & Policy Research	0	\$0	4	\$201,300	0	\$0
Communication Sciences & Disorders	0	\$0	1	\$7,917	0	\$0
Environmental Health Sciences	0	\$0	39	\$1,493,892	18	\$1,137,691
Epidemiology & Biostatistics	6	\$904,072	22	\$3,222,655	18	\$2,468,522
Exercise Science	1	\$1,500	8	\$905,136	10	\$1,757,386
Health Administration	0	\$0	10	\$596,827	19	\$601,697
Health Promotion & Education	2	\$102,975	19	\$353,083	18	\$719,548
Norman J. Arnold School of Public Health - Dean	0	\$0	3	\$2,626,630	2	\$492,197
Prevention Research Center	0	\$0	16	\$2,745,394	18	\$2,354,071
Total :	9	\$1,008,547	122	\$12,152,834	103	\$9,531,112
Regional and Four-Year Campuses						
Regional Campuses & Continuing Education	0	\$0	0	\$0	1	\$32,100
USC Aiken	4	\$58,395	15	\$866,792	16	\$1,037,643
USC Beaufort	3	\$67,505	7	\$207,001	7	\$420,884
USC Lancaster	0	\$0	3	\$240,832	5	\$446,882
USC Salkehatchie	0	\$0	2	\$221,454	3	\$426,764
USC Spartanburg	7	\$202,033	39	\$1,223,902	30	\$1,248,892
USC Sumter	0	\$0	4	\$250,208	5	\$402,496
USC Union	0	\$0	1	\$224,471	1	\$198,582
Total :	14	\$327,933	71	\$3,234,660	68	\$4,214,243
School of Medicine						
Basic Science Research	0	\$0	1	\$209,244	0	\$0
Biochemistry *	2	\$51,753	13	\$1,419,758	16	\$1,145,223
Cell Biology & Neurosciences	0	\$0	5	\$375,368	4	\$455,234
Developmental Biology & Anatomy	0	\$0	5	\$399,566	2	\$367,672
Family & Preventive Medicine	1	\$11,128	6	\$532,273	3	\$754,543
Health & Safety	0	\$0	1	\$9,600	1	\$10,000
Internal Medicine	6	\$22,838	21	\$843,842	18	\$299,563
Medicine Library	0	\$0	2	\$138,184	0	\$0
Microbiology & Immunology	0	\$0	4	\$511,016	5	\$682,421
Neuropsychiatry	1	\$300	5	\$95,477	5	\$268,390

DEPARTMENT	CURRENT MONTH NOVEMBER - 2001		YEAR TO DATE FY 2002		YEAR TO DATE FY 2001	
Obstetrics & Gynecology	0	\$0	0	\$0	2	\$70,525
Orthopaedic Surgery	0	\$0	0	\$0	2	\$7,250
Pathology	1	\$164,947	2	\$179,947	1	\$7,500
Pediatrics/Center for Developmental Disabilities	3	\$217,749	8	\$1,318,457	20	\$2,687,174
Pharmacology & Physiology	1	\$71,500	1	\$71,500	4	\$120,063
Radiology	0	\$0	1	\$401,974	1	\$400,313
Research & Special Projects	1	\$8,808	8	\$293,036	1	\$37,800
School of Medicine Graduate Program	0	\$0	0	\$0	2	\$35,360
South Carolina Cancer Center	2	\$30,000	4	\$114,000	2	\$11,711
Surgery	1	\$5,750	7	\$167,304	0	\$0
Total :	19	\$584,773	94	\$7,080,546	89	\$7,360,742
School of the Environment						
Earth Sciences & Resources Institute	0	\$0	3	\$226,274	3	\$204,998
School of the Environment	0	\$0	6	\$223,030	2	\$3,964
Total :	0	\$0	9	\$449,304	5	\$208,962
South Carolina Honors College						
	0	\$0	1	\$102,676	0	\$0
Total :	0	\$0	1	\$102,676	0	\$0
University Libraries						
Thomas Cooper Library	0	\$0	1	\$1,020	1	\$213,337
Total :	0	\$0	1	\$1,020	1	\$213,337
Vice President for Research						
EPSCoR	0	\$0	0	\$0	36	\$2,053,844
NanoCenter	0	\$0	3	\$377,999	0	\$0
Sponsored Programs & Research	0	\$0	1	\$23,689	1	\$20,000
Vice President for Research	0	\$0	0	\$0	1	\$2,300,000
Vice President for Research - General	0	\$0	3	\$431,342	0	\$0
Total :	0	\$0	7	\$833,030	38	\$4,373,844
Report TOTAL :	100	\$4,840,114	690	\$50,291,024	759	\$56,229,734

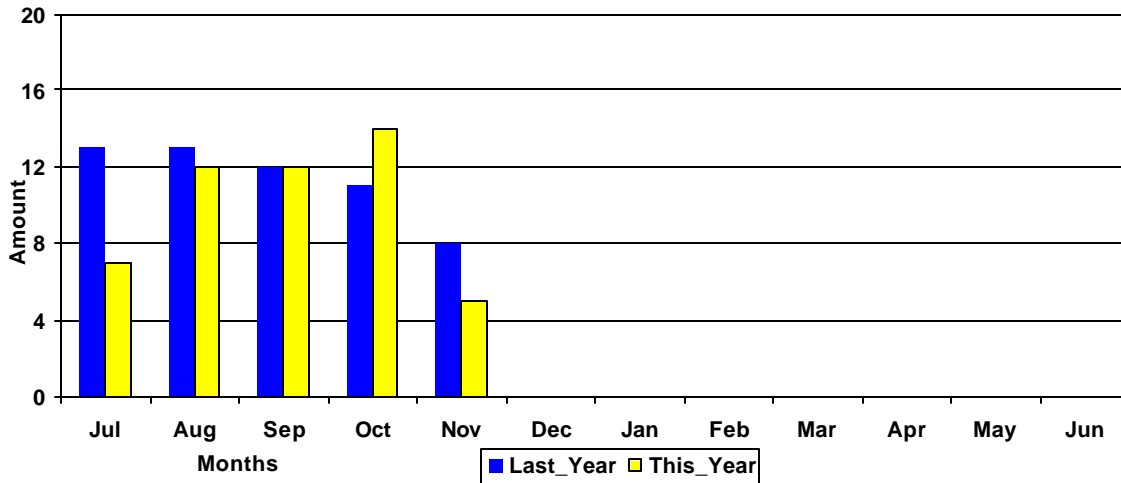
* - Biochemistry represents faculty with a dual appointment to the Department of Chemistry and the School of Medicine. The figures are included in both division totals but only once in the overall total.

Funding Agency Comparison Report

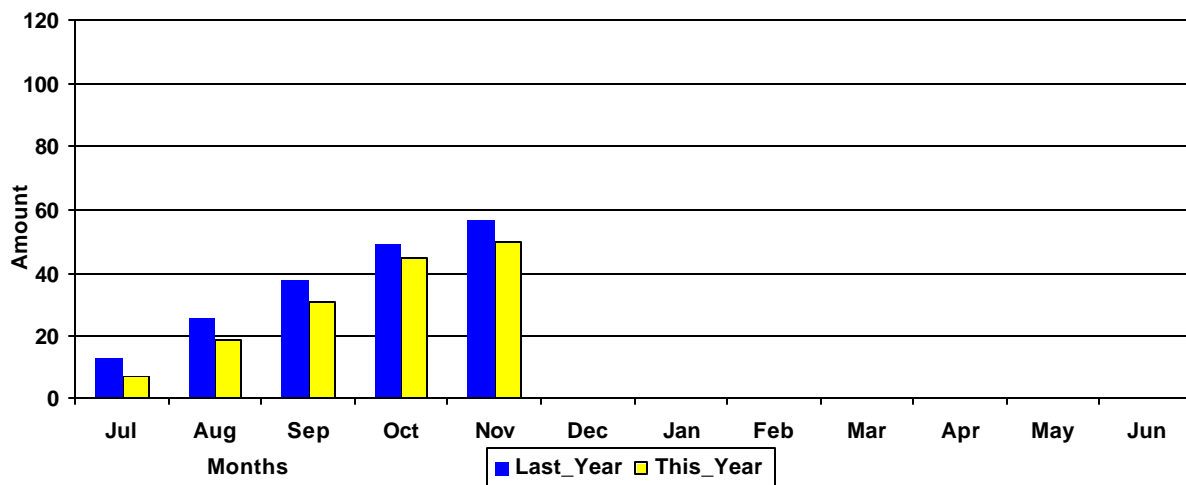
Year-To-Date -NOVEMBER - 2001

		<u>FISCAL YEAR - 2002</u>		<u>FISCAL YEAR - 2001</u>	
NSF Awards	36	\$2,953,162	43	\$3,030,063	
NIH Awards	56	\$5,405,007	58	\$6,656,404	
Dept. Of Defense Awards	26	\$2,934,823	33	\$6,750,469	
Dept. Of Education Awards	51	\$6,646,457	46	\$7,682,088	
Dept. Of Energy Awards	19	\$2,220,618	16	\$1,149,477	
SCUREF Awards from DOE	4	\$294,675	6	\$439,055	
State and Municipalities Awards	98	\$5,449,196	149	\$9,126,096	

Amounts Awarded
(In millions of dollars)



Cumulative Amounts Awarded
(In millions of dollars)



PROPOSALS BY DEPARTMENT

DEPARTMENT	CURRENT MONTH NOVEMBER - 2001		YEAR TO DATE FY 2002		YEAR TO DATE FY 2001	
Business and Finance						
Campus Services	0	\$0	0	\$0	1	\$2,000
Total :	0	\$0	0	\$0	1	\$2,000
College of Criminal Justice						
	0	\$0	1	\$33,917	5	\$196,223
Total :	0	\$0	1	\$33,917	5	\$196,223
College of Education						
Education Leadership & Policies	0	\$0	5	\$230,080	9	\$155,789
Educational Psychology	2	\$59,578	11	\$329,958	5	\$241,038
Instruction & Teacher Education	0	\$0	3	\$95,743	11	\$2,939,802
Physical Education	1	\$20,000	1	\$20,000	1	\$122,200
SC Educational Policy Center	1	\$15,500	2	\$16,500	2	\$92,816
School Improvement Council Assistance	0	\$0	1	\$25,250	0	\$0
USC Children's Center	0	\$0	0	\$0	1	\$30,000
Total :	4	\$95,078	23	\$717,531	29	\$3,581,645
College of Engineering & Information						
Chemical Engineering	1	\$29,511	15	\$1,235,853	21	\$4,896,792
Civil & Environmental Engineering	0	\$0	7	\$457,660	8	\$697,515
Computer Science & Engineering	3	\$702,623	17	\$1,502,050	16	\$1,297,064
Electrical Engineering	2	\$1,805,000	8	\$6,887,709	7	\$6,117,993
Engineering & Information Technology, College of	0	\$0	1	\$36,836	1	\$125,000
Mechanical Engineering	4	\$38,233	13	\$549,110	22	\$2,853,266
SCAMP	2	\$1,018,000	3	\$1,422,672	2	\$812,000
Total :	12	\$3,593,367	64	\$12,091,890	77	\$16,799,630
College of Hospitality, Retail & Sports						
Sport Administration	0	\$0	0	\$0	1	\$13,000
Total :	0	\$0	0	\$0	1	\$13,000
College of Journalism & Mass						
	1	\$39,004	8	\$207,091	13	\$433,556
Total :	1	\$39,004	8	\$207,091	13	\$433,556
College of Liberal Arts						
Anthropology	1	\$18,525	1	\$18,525	1	\$72,250
Archaeology & Anthropology, Institute of	0	\$0	8	\$940,209	6	\$1,096,273
Art	0	\$0	0	\$0	1	\$2,500
English	0	\$0	1	\$12,000	3	\$19,750
French & Classics	1	\$7,533	1	\$7,533	0	\$0
Geography	2	\$93,123	10	\$542,786	5	\$284,444
Government & International Studies	0	\$0	6	\$139,799	6	\$92,051
History	0	\$0	10	\$176,179	14	\$211,442
Institute for Southern Studies	0	\$0	1	\$28,968	0	\$0
International Studies, Institute of	0	\$0	2	\$183,443	0	\$0
Linguistics Program	0	\$0	0	\$0	1	\$30,246
McKissick Museum	0	\$0	2	\$6,500	3	\$112,255
Psychology	1	\$35,300	16	\$1,098,867	27	\$6,485,542

DEPARTMENT	CURRENT MONTH NOVEMBER - 2001		YEAR TO DATE FY 2002		YEAR TO DATE FY 2001	
Public Service & Policy Research, Institute for	4	\$200,738	12	\$2,322,583	18	\$925,304
Religious Studies	0	\$0	1	\$50,000	0	\$0
Sociology	0	\$0	1	\$70,661	7	\$242,003
Trio Programs	1	\$3,803	4	\$757,790	2	\$367,697
Total :	10	\$359,022	76	\$6,355,843	94	\$9,941,757
College of Library & Information Science	0	\$0	3	\$52,839	4	\$57,741
Total :	0	\$0	3	\$52,839	4	\$57,741
College of Nursing						
Academic & Student Affairs	1	\$2,009,251	3	\$2,094,641	5	\$183,743
Administrative & Clinical Nursing	0	\$0	2	\$526,790	3	\$18,500
Family & Community Health Nursing	0	\$0	5	\$533,876	2	\$2,418,860
Total :	1	\$2,009,251	10	\$3,155,307	10	\$2,621,103
College of Pharmacy						
Basic Pharmaceutical Sciences	2	\$241,750	6	\$1,168,360	7	\$912,559
Clinical Pharmacy	1	\$91,250	3	\$136,085	3	\$120,728
Palmetto Poison Center	0	\$0	0	\$0	1	\$128,957
Pharmacy Practice	0	\$0	1	\$30,000	9	\$341,440
Total :	3	\$333,000	10	\$1,334,445	20	\$1,503,684
College of Science and Math						
Baruch Institute	0	\$0	10	\$693,327	7	\$716,999
Biological Sciences	6	\$347,681	29	\$2,697,223	28	\$2,194,344
Center For Science Education	1	\$71,123	4	\$325,041	3	\$130,986
Chemistry & Biochemistry	4	\$95,000	21	\$3,883,164	41	\$6,555,025
EPSCoR (moved to VP for Research)	0	\$0	0	\$0	1	\$40,000
Geological Sciences	8	\$940,497	23	\$2,022,268	20	\$1,811,384
Mathematics	2	\$98,805	11	\$434,851	8	\$482,815
Physics & Astronomy	3	\$124,110	12	\$1,562,300	17	\$6,240,312
Science & Math Administration	1	\$1,977,733	1	\$1,977,733	2	\$379,943
Statistics	2	\$80,304	9	\$218,421	7	\$211,406
Total :	27	\$3,735,253	120	\$13,814,328	134	\$18,763,214
College of Social Work	0	\$0	31	\$612,399	33	\$1,230,694
Total :	0	\$0	31	\$612,399	33	\$1,230,694
Darla Moore School of Business						
Business Administration - Division Of Research	0	\$0	35	\$769,528	31	\$420,765
Small Business Development Center	0	\$0	4	\$1,311,271	3	\$2,386,650
Total :	0	\$0	39	\$2,080,799	34	\$2,807,415
Division of Student Affairs						
Housing & Residential Services	0	\$0	1	\$25,000	0	\$0
Student Health	0	\$0	1	\$13,531	0	\$0
Student Life	0	\$0	2	\$27,515	1	\$19,410
Total :	0	\$0	4	\$66,046	1	\$19,410
Institute for Families in Society						

DEPARTMENT	CURRENT MONTH NOVEMBER - 2001		YEAR TO DATE FY 2002		YEAR TO DATE FY 2001	
Families in Society, Institute for	0	\$0	10	\$1,040,721	8	\$1,158,000
Total :	0	\$0	10	\$1,040,721	8	\$1,158,000
Institutional Planning						
Law Enforcement & Safety	0	\$0	1	\$21,600	1	\$19,559
Total :	0	\$0	1	\$21,600	1	\$19,559
Law School						
Law School	0	\$0	7	\$1,104,932	9	\$978,607
Total :	0	\$0	7	\$1,104,932	9	\$978,607
Norman J. Arnold School of Public Health						
Center for Health Services & Policy Research	1	\$80,254	4	\$383,449	0	\$0
Communication Sciences & Disorders	0	\$0	1	\$7,917	1	\$199,011
Environmental Health Sciences	4	\$508,794	12	\$1,271,792	6	\$411,803
Epidemiology & Biostatistics	1	\$72,250	12	\$872,064	14	\$1,806,561
Exercise Science	1	\$64,654	10	\$573,417	6	\$139,321
Health Administration	0	\$0	9	\$176,878	16	\$95,385
Health Promotion & Education	1	\$3,000	16	\$311,203	15	\$420,081
Norman J. Arnold School of Public Health - Dean	0	\$0	0	\$0	2	\$1,338,100
Prevention Research Center	0	\$0	3	\$365,527	7	\$833,453
Total :	8	\$728,952	67	\$3,962,247	67	\$5,243,715
Regional and Four-Year Campuses						
USC Aiken	3	\$126,033	12	\$701,030	12	\$589,869
USC Beaufort	1	\$46,628	6	\$162,551	10	\$536,197
USC Lancaster	0	\$0	3	\$317,360	3	\$370,165
USC Salkehatchie	0	\$0	0	\$0	3	\$377,922
USC Spartanburg	2	\$117,404	20	\$1,094,861	13	\$807,725
USC Sumter	0	\$0	2	\$192,079	5	\$312,556
USC Union	0	\$0	0	\$0	1	\$299,376
Total :	6	\$290,065	43	\$2,467,881	47	\$3,293,810
School of Medicine						
Animal Resources Facility	0	\$0	0	\$0	1	\$128,159
Biochemistry *	1	\$57,800	5	\$660,315	3	\$661,709
Cell Biology & Neurosciences	0	\$0	1	\$108,000	3	\$398,502
Developmental Biology & Anatomy	0	\$0	6	\$1,095,458	14	\$1,784,486
Family & Preventive Medicine	0	\$0	4	\$451,856	5	\$582,695
Internal Medicine	0	\$0	10	\$389,541	4	\$699,514
Microbiology & Immunology	0	\$0	3	\$434,719	3	\$548,975
Neuropsychiatry	2	\$58,000	8	\$875,565	1	\$94,160
Obstetrics & Gynecology	0	\$0	0	\$0	1	\$59,000
Ophthalmology	1	\$35,000	1	\$35,000	0	\$0
Pathology	3	\$368,300	8	\$906,678	5	\$914,029
Pediatrics/Center for Developmental Disabilities	2	\$274,662	12	\$1,971,290	8	\$410,244
Pharmacology & Physiology	2	\$29,832	8	\$685,427	9	\$631,846
Radiology	0	\$0	0	\$0	1	\$400,313
Research & Special Projects	0	\$0	2	\$9,358	0	\$0
School of Medicine - Dean's Office	0	\$0	1	\$27,493	0	\$0
School of Medicine Graduate Program	0	\$0	0	\$0	2	\$17,680

DEPARTMENT	CURRENT MONTH NOVEMBER - 2001		YEAR TO DATE FY 2002		YEAR TO DATE FY 2001	
South Carolina Cancer Center	0	\$0	2	\$84,000	2	\$11,711
Surgery	0	\$0	4	\$265,323	0	\$0
Total :	11	\$823,594	75	\$8,000,023	62	\$7,343,023
School of the Environment						
Earth Sciences & Resources Institute	1	\$238,155	3	\$1,076,814	2	\$898,187
School of the Environment	1	\$24,720	13	\$1,237,521	5	\$122,870
Total :	2	\$262,875	16	\$2,314,335	7	\$1,021,057
South Carolina Honors College						
	0	\$0	1	\$71,982	2	\$85,414
Total :	0	\$0	1	\$71,982	2	\$85,414
University Libraries						
Libraries & Collections	0	\$0	0	\$0	1	\$5,350
Thomas Cooper Library	0	\$0	1	\$90,000	1	\$166,878
Total :	0	\$0	1	\$90,000	2	\$172,228
University Press						
	0	\$0	0	\$0	1	\$10,000
Total :	0	\$0	0	\$0	1	\$10,000
Vice President for Research						
NanoCenter	1	\$446,262	7	\$3,526,153	0	\$0
Sponsored Programs & Research	1	\$60,000	1	\$60,000	0	\$0
Total :	2	\$506,262	8	\$3,586,153	0	\$0
Report TOTAL :	86	\$12,717,923	613	\$62,521,994	659	\$76,634,775

* - Biochemistry represents faculty with a dual appointment to the Department of Chemistry and the School of Medicine. The figures are included in both division totals but only once in the overall total.