

**MEMORANDUM**

To: Harris Pastides, Ph.D.  
 Interim Vice President for Research

From: Anthony M. Boccanfuso, Ph.D.  
 Managing Director

RE: Report of Sponsored Program Activity for May 2003

Date: June 16, 2003

The month of May and year-to-date continue to look positive.

- May 2003 awards totaled \$11.1 million of new funding, an increase of \$1.6 million from May 2002.
- Total awards (research, service, training) through May reached \$122.1 million (compared to \$95.9 million in FY2002), an increase of twenty-eight (28%) when compared to last year's number.
- Faculty submitted 142 proposals requesting \$17 million during May. Thus far in the fiscal year, SPAR has processed 1475 proposals requesting \$199 million, compared to last year's totals of 1359 and \$156 million.

	<b>May FY03</b>	<b>YTD FY02 July to May</b>	<b>YTD FY03 July to May</b>	<b>YTD Change</b>
Award Dollars	\$11,115,208	\$95,853,438	\$122,062,363	<b>28%</b>
Research Direct Expenditures	\$6,278,370	\$50,170,177	\$53,975,561	<b>8%</b>
Research IDC Expenditures	\$1,427,433	\$12,970,257	\$13,684,977	<b>6%</b>
Proposals Submitted	142	1359	1475	<b>9%</b>
Proposal Dollars Requested	\$17,368,905	\$156,415,897	\$198,797,612	<b>27%</b>
<b>Notable Areas</b>				
Health Science Colleges	\$2,354,707	\$38,581,977	\$45,606,436	<b>19%</b>
Engineering & Information Technology	\$2,008,466	\$13,613,217	\$18,067,199	<b>33%</b>
Liberal Arts, College of	\$411,495	\$5,890,813	\$12,175,315	<b>107%</b>
Regional and Four-Year Campuses	\$2,029,909	\$4,654,117	\$8,105,660	<b>75%</b>
Science and Mathematics, College of	\$1,996,307	\$16,337,446	\$23,064,623	<b>42%</b>

cc: Andrew A. Sorensen, Ph.D.  
 Jerome D. Odom, Ph.D.  
 R. Steven Etheredge  
 Richard Kelly

## May Featured Awards

### Engineering & Information Technology, College of

Chemical Engineering

**Gatzke, Edward**

CAREER: Mixed-Integer Nonlinear Programming Approaches for Hydrogen  
Production Systems - (FA35)  
USCRF/National Science Foundation (NSF) - General

\$431,359

**Van Zee, John**

I/UCRC for Fuel Cell Research - Operation Grant - (FA37)  
USCRF/National Science Foundation (NSF) - General

\$210,000

### Environment, School of the

Earth Sciences & Resources Institute

**Kloot, Robin**

**Shafer, John**

Natural Resources and Conservation Decision - Support System - (F144)  
USDA Natural Resources Conservation Service/USDA

\$680,000

### Liberal Arts, College of

History

**Chesnutt, David**

The Papers of Henry Laurens - (FA04)  
USCRF/National Historic Publications & Records Commission

\$7,050

### Mass Communications & Information Studies, College

Journalism & Mass Communications, School of

**Bierbauer, Charles**

Strategic Communications Training - (FL20)  
USCRF/Social Security Administration (SSA) - General

\$215,652

### Music, School of

Music, School of

**Barnes, Gail**

USC String Project - (KL00)  
NORD Family Foundation

\$17,295

### Public Health, Norman J. Arnold School of

Epidemiology & Biostatistics

**Mayer-Davis, Elizabeth**

Defining Diabetes in Youth: South Carolina Site - (FA29)  
USCRF/University of Colorado/NIH

\$285,906

Public Health, Norman J. Arnold School of -Dean

**Glover, Sandra**

African American Public Health Fellowship and Development Program to  
Address Health Disparities - (KJ00)  
USCRF/W. K. Kellogg Foundation

\$424,978

### Science and Mathematics, College of

Biological Sciences

**Vance, Vicki**

Suppression of RNA Silencing in Maize - (JA01)  
USCRF/Dow Agroscience, LLC

\$240,000

Chemistry & Biochemistry

**Rassolov, Vitaly**

SGER: Model Chemistry Based on Electron Geminals - (FA44)  
USCRF/National Science Foundation (NSF) - General

\$92,800

### Social Work, College of

Social Work, College of

**Bond, Pamela**

Evaluation and Consultation of Connectinc. - (KL06)  
USCRF/Annie E. Casey Foundation

\$10,000

# Sponsored Programs and Research Monthly Report

## SUMMARY OF AWARDS MAY - 2003

### By Purpose

Research Awards	\$6,974,316
Training Awards	\$1,018,769
Service Awards	\$1,575,933
Equipment Awards	\$1,344,936
Graduate Assistantship Awards	\$201,254
<b>TOTAL:</b>	<b>\$11,115,208</b>

### By Source

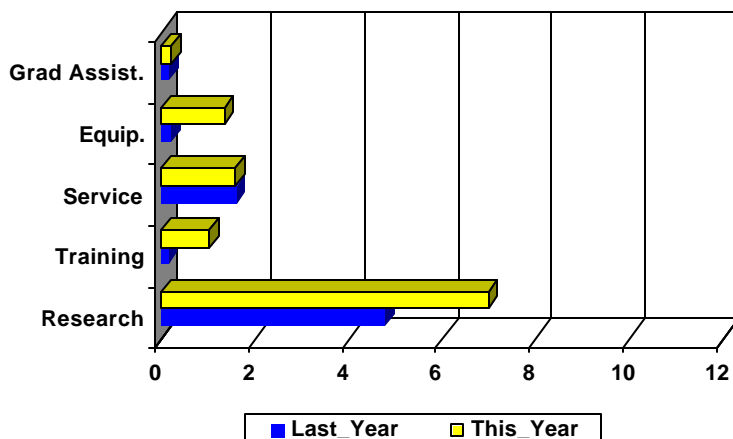
Federal Awards	\$7,571,865
Private Awards	\$1,796,186
State Awards	\$1,747,157
<b>TOTAL:</b>	<b>\$11,115,208</b>

## COMPARISON OF AMOUNT RECEIVED

MAY - 2003 vs. MAY - 2002

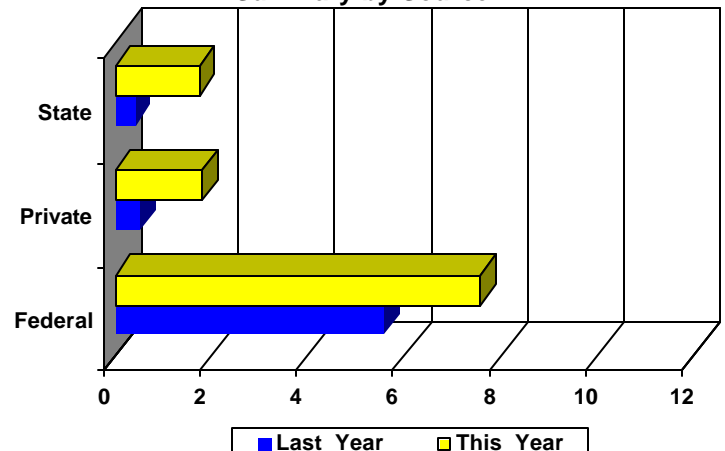
Amounts Received  
(In millions of dollars)

Summary by Purpose



Amounts Received  
(In millions of dollars)

Summary by Source



## AWARDS BY DEPARTMENT

DEPARTMENT	CURRENT MONTH MAY - 2003		YEAR TO DATE FY 2003		YEAR TO DATE FY 2002	
<b>Business &amp; Finance</b>						
Recycling & Waste Management	0	\$0	0	\$0	1	\$9,970
<b>Total :</b>	<b>0</b>	<b>\$0</b>	<b>0</b>	<b>\$0</b>	<b>1</b>	<b>\$9,970</b>
<b>Business, Moore School of</b>						
Business Administration - Division of Research	1	\$89,119	32	\$1,031,281	63	\$1,127,927
Small Business Development Center	1	\$6,503	5	\$348,143	10	\$1,453,762
<b>Total :</b>	<b>2</b>	<b>\$95,622</b>	<b>37</b>	<b>\$1,379,424</b>	<b>73</b>	<b>\$2,581,689</b>
<b>Education, College of</b>						
Education	0	\$0	3	\$121,841	2	\$35,760
Education Leadership & Policies	0	\$0	5	\$215,408	5	\$197,682
Educational Psychology	0	\$0	9	\$486,451	17	\$576,249
Instruction & Teacher Education	1	\$556,851	22	\$2,988,890	21	\$2,531,473
Office of Program Evaluation	2	\$106,569	7	\$398,478	0	\$0
Physical Education	1	\$300,000	1	\$300,000	0	\$0
Physical Education	0	\$0	2	\$305,000	8	\$1,117,110
SC Educational Policy Center	0	\$0	0	\$0	1	\$15,500
School Improvement Council Assistance	0	\$0	2	\$150,759	4	\$209,805
USC Children's Center	0	\$0	1	\$7,500	0	\$0
<b>Total :</b>	<b>4</b>	<b>\$963,420</b>	<b>52</b>	<b>\$4,974,327</b>	<b>58</b>	<b>\$4,683,579</b>
<b>Engineering &amp; Information Technology,</b>						
Chemical Engineering	7	\$985,210	40	\$5,608,918	36	\$3,226,575
Civil & Environmental Engineering	3	\$221,662	20	\$862,410	18	\$1,701,933
Computer Science & Engineering	5	\$236,107	22	\$764,584	16	\$822,467
Electrical Engineering	1	\$7,936	15	\$7,673,719	13	\$3,021,491
Engineering & Information Technology, College of	0	\$0	2	\$48,750	4	\$1,662,495
Mechanical Engineering	3	\$542,675	27	\$2,762,035	30	\$1,672,541
SC Alliance for Minority Participation (SCAMP)	2	\$14,876	7	\$346,783	11	\$1,505,715
<b>Total :</b>	<b>21</b>	<b>\$2,008,466</b>	<b>133</b>	<b>\$18,067,199</b>	<b>128</b>	<b>\$13,613,217</b>
<b>English Program for Internationals</b>						
English Program for Internationals	0	\$0	1	\$280,140	1	\$266,508
<b>Total :</b>	<b>0</b>	<b>\$0</b>	<b>1</b>	<b>\$280,140</b>	<b>1</b>	<b>\$266,508</b>
<b>Enrollment Management</b>						
	0	\$0	1	\$37,583	1	\$33,047
<b>Total :</b>	<b>0</b>	<b>\$0</b>	<b>1</b>	<b>\$37,583</b>	<b>1</b>	<b>\$33,047</b>
<b>Environment, School of the</b>						
Earth Sciences & Resources Institute	1	\$680,000	5	\$707,050	6	\$884,840
Environment, School of the	0	\$0	12	\$784,295	11	\$597,178
<b>Total :</b>	<b>1</b>	<b>\$680,000</b>	<b>17</b>	<b>\$1,491,345</b>	<b>17</b>	<b>\$1,482,018</b>
<b>Families in Society, Institute for</b>						
	1	\$18,850	19	\$2,212,800	24	\$2,240,173
<b>Total :</b>	<b>1</b>	<b>\$18,850</b>	<b>19</b>	<b>\$2,212,800</b>	<b>24</b>	<b>\$2,240,173</b>

DEPARTMENT	CURRENT MONTH MAY - 2003		YEAR TO DATE FY 2003		YEAR TO DATE FY 2002	
<b>Honors College, South Carolina</b>	0	\$0	2	\$12,191	1	\$102,676
<b>Total :</b>	<b>0</b>	<b>\$0</b>	<b>0</b>	<b>\$0</b>	<b>0</b>	<b>\$0</b>
<b>Hospitality, Retail &amp; Sports Management,</b>						
Hospitality, Retail & Sports Mgmt - (Dean)	1	\$38,000	1	\$38,000	1	\$62,500
Retailing Studies, Center for	0	\$0	1	\$8,000	2	\$36,429
Sport Administration	0	\$0	0	\$0	1	\$14,000
<b>Total :</b>	<b>1</b>	<b>\$38,000</b>	<b>2</b>	<b>\$46,000</b>	<b>4</b>	<b>\$112,929</b>
<b>Institutional Planning</b>						
<b>Law, School of</b>						
Law, School of	0	\$0	9	\$1,111,383	15	\$1,441,774
<b>Total :</b>	<b>0</b>	<b>\$0</b>	<b>9</b>	<b>\$1,111,383</b>	<b>15</b>	<b>\$1,441,774</b>
<b>Liberal Arts, College of</b>						
Archaeology & Anthropology, SC Institute of	0	\$0	11	\$1,511,082	13	\$1,586,613
Art	1	\$28,000	2	\$29,200	2	\$27,384
Comparative Literature	0	\$0	0	\$0	1	\$1,200
Criminology & Criminal Justice, Department of	0	\$0	1	\$24,447	2	\$80,392
English	1	\$30,000	2	\$50,000	3	\$60,075
Geography	0	\$0	19	\$918,619	21	\$836,974
Government & International Studies	0	\$0	7	\$38,373	8	\$157,194
History	4	\$38,708	17	\$187,553	26	\$92,585
International Studies, Institute of	0	\$0	1	\$214,608	3	\$362,110
Languages, Literatures, and Cultures, Department	0	\$0	0	\$0	1	\$7,533
Liberal Arts - (Dean)	0	\$0	0	\$0	1	\$6,000
McKissick Museum	0	\$0	5	\$134,515	5	\$21,270
Naval Science	0	\$0	2	\$4,000	2	\$4,000
Philosophy	0	\$0	2	\$20,900	2	\$55,294
Psychology	3	\$301,117	48	\$5,314,922	31	\$1,606,682
Public Service & Policy Research, Institute for	1	\$13,670	23	\$3,447,182	19	\$735,215
Religious Studies	0	\$0	1	\$25,000	1	\$50,000
Sociology	0	\$0	2	\$148,757	1	\$6,018
Southern Studies, Institute for	0	\$0	2	\$106,157	4	\$194,274
<b>Total :</b>	<b>10</b>	<b>\$411,495</b>	<b>145</b>	<b>\$12,175,315</b>	<b>146</b>	<b>\$5,890,813</b>
<b>Mass Communications &amp; Information</b>						
Journalism & Mass Communications, School of	3	\$236,592	17	\$1,163,608	12	\$215,066
Library & Information Sciences, School of	1	\$37,079	8	\$68,275	5	\$63,053
<b>Total :</b>	<b>4</b>	<b>\$273,671</b>	<b>25</b>	<b>\$1,231,883</b>	<b>17</b>	<b>\$278,119</b>
<b>Medicine, School of</b>						
Basic Science Research	0	\$0	2	\$226,938	1	\$209,244
Biochemistry *	3	\$270,245	26	\$2,036,067	24	\$2,170,181
Cancer Center, South Carolina	0	\$0	11	\$197,922	6	\$151,014
Cell & Developmental Biology & Anatomy	0	\$0	17	\$1,603,496	18	\$1,634,394
Cell Biology & Neurosciences	1	\$24,698	1	\$24,698	6	\$601,006
Family & Preventive Medicine	1	\$78,618	9	\$1,442,320	9	\$649,273
Health & Safety	0	\$0	0	\$0	1	\$9,600

DEPARTMENT	CURRENT MONTH MAY - 2003		YEAR TO DATE FY 2003		YEAR TO DATE FY 2002	
Internal Medicine	2	\$62,142	25	\$2,754,215	43	\$2,945,584
Medicine Library	0	\$0	4	\$271,327	2	\$137,048
Neuropsychiatry	0	\$0	8	\$661,437	10	\$219,489
Obstetrics & Gynecology	0	\$0	2	\$126,607	1	\$59,000
Ophthalmology	0	\$0	6	\$44,688	1	\$10,000
Pathology	0	\$0	3	\$283,100	5	\$710,075
Pathology & Microbiology	0	\$0	11	\$966,790	8	\$719,888
Pediatrics/Developmental Disabilities, Center for	0	\$0	23	\$1,861,518	17	\$1,832,520
Pharmacology, Physiology & Neuroscience	2	\$54,352	10	\$644,289	3	\$116,096
Radiology	0	\$0	1	\$412,435	1	\$401,974
Research & Special Projects	1	\$2,500	18	\$618,061	19	\$683,690
Surgery	1	\$4,425	8	\$189,819	13	\$585,516
<b>Total :</b>	<b>11</b>	<b>\$496,980</b>	<b>185</b>	<b>\$14,365,727</b>	<b>188</b>	<b>\$13,845,592</b>
<b>Music, School of</b>	1	\$17,295	2	\$17,695	1	\$35,937
<b>Total :</b>	<b>1</b>	<b>\$17,295</b>	<b>2</b>	<b>\$17,695</b>	<b>1</b>	<b>\$35,937</b>
<b>Nursing, College of</b>						
Academic & Student Affairs	0	\$0	6	\$572,904	15	\$844,231
Administrative & Clinical Nursing	0	\$0	2	\$97,164	1	\$86,003
Family & Community Health Nursing	0	\$0	5	\$314,679	2	\$36,917
<b>Total :</b>	<b>0</b>	<b>\$0</b>	<b>13</b>	<b>\$984,747</b>	<b>18</b>	<b>\$967,151</b>
<b>Pharmacy, College of</b>						
Basic Pharmaceutical Sciences	2	\$315,219	11	\$986,252	6	\$752,166
Palmetto Poison Center	0	\$0	2	\$215,990	3	\$291,131
Pharmacy & Health Outcomes Sci.	0	\$0	2	\$49,500	5	\$96,611
Pharmacy Practice	0	\$0	3	\$114,505	4	\$122,835
<b>Total :</b>	<b>2</b>	<b>\$315,219</b>	<b>18</b>	<b>\$1,366,247</b>	<b>18</b>	<b>\$1,262,743</b>
<b>Provost, Office of the</b>						
Provost, Office of the	0	\$0	1	\$4,335	0	\$0
TRIO Programs	1	\$476,491	6	\$1,730,185	7	\$1,752,942
<b>Total :</b>	<b>1</b>	<b>\$476,491</b>	<b>7</b>	<b>\$1,734,520</b>	<b>7</b>	<b>\$1,752,942</b>
<b>Public Health, Norman J. Arnold School of</b>						
Communication Sciences & Disorders	0	\$0	3	\$83,808	2	\$80,334
Environmental Health Sciences	3	\$357,878	36	\$2,107,736	49	\$2,017,228
Epidemiology & Biostatistics	5	\$389,394	44	\$3,804,022	33	\$3,671,841
Exercise Science	0	\$0	21	\$2,404,933	15	\$1,669,499
Health Administration	4	\$10,342	34	\$959,127	23	\$744,409
Health Promotion, Education & Behavior	4	\$107,082	48	\$2,685,035	38	\$1,153,928
Health Services & Policy Research, Center for	1	\$19,051	10	\$430,953	10	\$931,452
Prevention Research Center	2	\$151,687	22	\$3,611,483	23	\$3,357,183
Public Health, Norman J. Arnold School of -Dean	2	\$468,417	12	\$6,209,376	4	\$3,474,760
<b>Total :</b>	<b>21</b>	<b>\$1,503,851</b>	<b>230</b>	<b>\$22,296,473</b>	<b>197</b>	<b>\$17,100,634</b>
<b>Regional and Four-Year Campuses</b>						
USC Aiken	0	\$0	28	\$2,048,379	23	\$1,069,398
USC Beaufort	2	\$131,476	11	\$1,121,299	17	\$385,697
USC Lancaster	0	\$0	5	\$565,689	4	\$260,153

DEPARTMENT	CURRENT MONTH MAY - 2003		YEAR TO DATE FY 2003		YEAR TO DATE FY 2002	
USC Salkehatchie	1	\$8,820	9	\$459,593	6	\$542,747
USC Spartanburg	8	\$1,889,613	55	\$3,412,673	67	\$1,913,443
USC Sumter	0	\$0	2	\$260,079	5	\$253,208
USC Union	0	\$0	2	\$237,948	2	\$229,471
<b>Total :</b>	<b>11</b>	<b>\$2,029,909</b>	<b>112</b>	<b>\$8,105,660</b>	<b>124</b>	<b>\$4,654,117</b>
<b>Research, Vice President for</b>						
Biomedical Research Infrastructure Network (BRIN)	0	\$0	8	\$1,098,209	0	\$0
NanoCenter	0	\$0	8	\$831,000	9	\$1,795,429
Research, Vice President for - (General)	0	\$0	0	\$0	4	\$513,580
Sponsored Programs & Research	1	\$13,890	2	\$37,890	1	\$10,683
Technology Incubator	0	\$0	1	\$160,000	0	\$0
<b>Total :</b>	<b>1</b>	<b>\$13,890</b>	<b>19</b>	<b>\$2,127,099</b>	<b>14</b>	<b>\$2,319,692</b>
<b>Science and Mathematics, College of</b>						
Baruch Institute	7	\$107,822	32	\$5,108,099	28	\$2,220,155
Biological Research & Technology, Institute for	0	\$0	0	\$0	2	\$3,300
Biological Sciences	6	\$326,638	51	\$4,730,304	46	\$4,088,601
Chemistry & Biochemistry	8	\$585,172	54	\$4,226,015	47	\$3,579,631
COBRE: Center for Colon Cancer Research	0	\$0	11	\$2,366,028	0	\$0
Geological Sciences	4	\$134,409	54	\$3,025,025	54	\$2,230,478
Mathematics	2	\$539,702	6	\$862,203	8	\$619,551
Physics & Astronomy	5	\$216,000	27	\$1,523,766	13	\$1,921,495
Science & Math Administration	0	\$0	6	\$812,661	6	\$743,043
Science Education, Center for	1	\$8,000	2	\$20,400	2	\$628,472
Statistics	4	\$78,564	17	\$390,122	13	\$302,720
<b>Total :</b>	<b>37</b>	<b>\$1,996,307</b>	<b>260</b>	<b>\$23,064,623</b>	<b>219</b>	<b>\$16,337,446</b>
<b>Social Work, College of</b>						
	11	\$38,657	66	\$6,593,242	67	\$5,405,857
<b>Total :</b>	<b>11</b>	<b>\$38,657</b>	<b>66</b>	<b>\$6,593,242</b>	<b>67</b>	<b>\$5,405,857</b>
<b>Student Affairs, Division of</b>						
Student Health	1	\$7,330	4	\$39,262	3	\$313,265
Student Life	0	\$0	2	\$132,277	4	\$158,199
<b>Total :</b>	<b>1</b>	<b>\$7,330</b>	<b>6</b>	<b>\$171,539</b>	<b>7</b>	<b>\$471,464</b>
<b>University Libraries</b>						
Thomas Cooper Library	0	\$0	1	\$251,268	5	\$1,133,532
<b>Total :</b>	<b>0</b>	<b>\$0</b>	<b>1</b>	<b>\$251,268</b>	<b>5</b>	<b>\$1,133,532</b>
<b>Report TOTAL :</b>	<b>138</b>	<b>\$11,115,208</b>	<b>1336</b>	<b>\$122,062,363</b>	<b>1327</b>	<b>\$95,853,438</b>

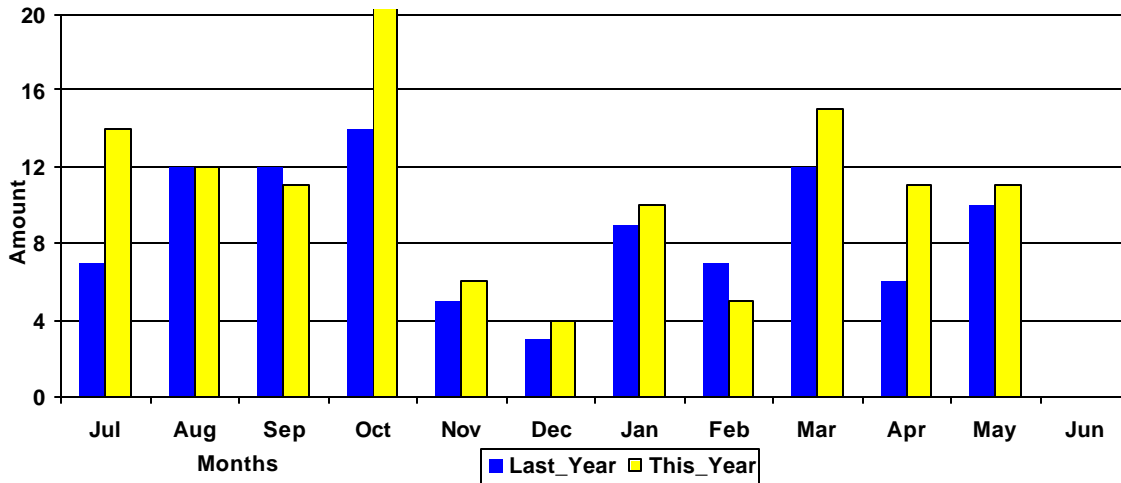
\* - Biochemistry represents faculty with a dual appointment to the Department of Chemistry and the School of Medicine. The figures are included in both division totals but only once in the overall total.

# Funding Agency Comparison Report

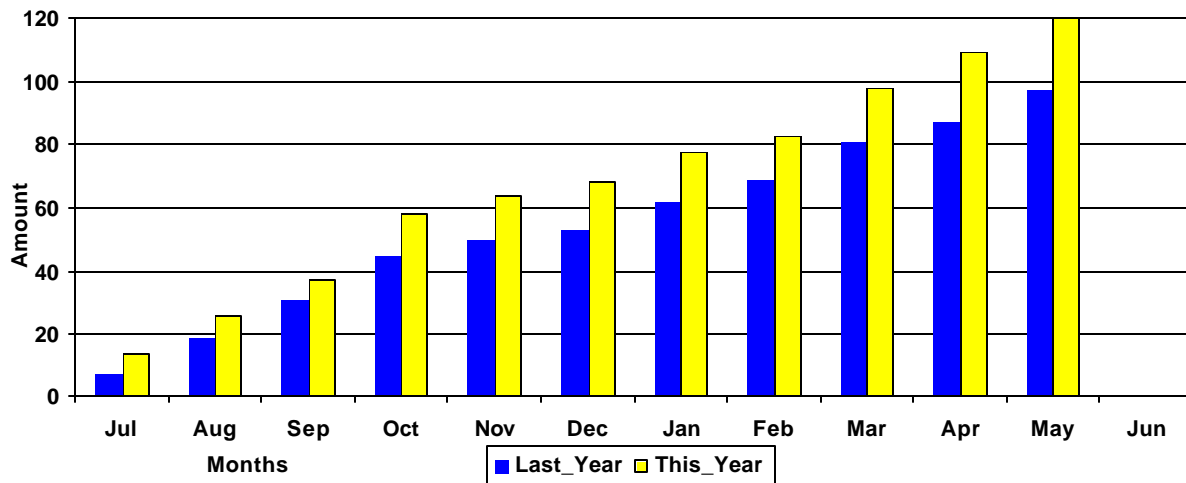
Year-To-Date - MAY - 2003

	<u>FISCAL YEAR - 2003</u>		<u>FISCAL YEAR - 2002</u>		<u>YTD CHANGE</u>
<b>NSF Awards</b>	109	\$10,078,331	97	\$9,014,496	12%
<b>NIH Awards</b>	157	\$18,645,913	113	\$10,875,258	72%
<b>Dept. Of Defense Awards</b>	71	\$14,964,080	56	\$5,221,876	187%
<b>Dept. Of Education Awards</b>	63	\$8,827,461	69	\$8,066,670	10%
<b>Dept. Of Energy Awards</b>	47	\$4,437,432	48	\$7,661,365	(42)%
<b>State and Municipalities Awards</b>	159	\$7,619,018	163	\$7,351,448	4%
<b>Non Profit Awards</b>	188	\$5,793,681	214	\$7,532,853	(23)%
<b>Business and Industry Awards</b>	156	\$3,553,649	169	\$2,709,330	32%

Amounts Awarded  
(In millions of dollars)



Cumulative Amounts Awarded  
(In millions of dollars)



# PROPOSALS BY DEPARTMENT

DEPARTMENT	CURRENT MONTH MAY - 2003		YEAR TO DATE FY 2003		YEAR TO DATE FY 2002	
<b>Business &amp; Finance</b>						
Campus Services	0	\$0	0	\$0	1	\$7,497
Recycling & Waste Management	0	\$0	0	\$0	1	\$10,000
<b>Total :</b>	<b>0</b>	<b>\$0</b>	<b>0</b>	<b>\$0</b>	<b>2</b>	<b>\$17,497</b>
<b>Business, Moore School of</b>						
Business Administration - Division of Research	0	\$0	32	\$738,798	50	\$878,412
Small Business Development Center	0	\$0	6	\$1,529,869	7	\$2,588,813
<b>Total :</b>	<b>0</b>	<b>\$0</b>	<b>38</b>	<b>\$2,268,667</b>	<b>57</b>	<b>\$3,467,225</b>
<b>Education, College of</b>						
Education	0	\$0	0	\$0	4	\$315,585
Education Leadership & Policies	0	\$0	3	\$209,928	8	\$407,006
Educational Psychology	1	\$25,000	9	\$888,479	21	\$1,383,577
Instruction & Teacher Education	1	\$10,000	20	\$3,528,158	11	\$741,652
Office of Program Evaluation	1	\$50,144	4	\$245,477	1	\$126,370
Physical Education	0	\$0	1	\$1,020,000	0	\$0
Physical Education	0	\$0	0	\$0	6	\$1,114,110
SC Educational Policy Center	0	\$0	0	\$0	2	\$16,500
School Improvement Council Assistance	0	\$0	1	\$12,000	2	\$75,250
USC Children's Center	0	\$0	2	\$36,500	0	\$0
<b>Total :</b>	<b>3</b>	<b>\$85,144</b>	<b>40</b>	<b>\$5,940,542</b>	<b>55</b>	<b>\$4,180,050</b>
<b>Engineering &amp; Information Technology,</b>						
Chemical Engineering	4	\$404,841	62	\$12,239,138	39	\$3,026,827
Civil & Environmental Engineering	3	\$129,064	35	\$3,221,934	15	\$1,250,314
Computer Science & Engineering	4	\$790,833	46	\$6,047,894	32	\$3,164,533
Electrical Engineering	1	\$160,000	33	\$10,136,233	20	\$10,267,929
Engineering & Information Technology, College of	2	\$56,500	6	\$302,504	3	\$171,836
Mechanical Engineering	3	\$79,883	39	\$3,603,777	36	\$5,443,910
SC Alliance for Minority Participation (SCAMP)	0	\$0	1	\$16,000	4	\$1,604,172
<b>Total :</b>	<b>17</b>	<b>\$1,621,121</b>	<b>222</b>	<b>\$35,567,480</b>	<b>149</b>	<b>\$24,929,521</b>
<b>English Program for Internationals</b>						
English Program for Internationals	0	\$0	1	\$280,140	1	\$265,492
<b>Total :</b>	<b>0</b>	<b>\$0</b>	<b>1</b>	<b>\$280,140</b>	<b>1</b>	<b>\$265,492</b>
<b>Environment, School of the</b>						
Earth Sciences & Resources Institute	1	\$680,000	8	\$1,109,840	12	\$2,326,007
Environment, School of the	2	\$92,645	17	\$1,162,690	24	\$2,868,068
<b>Total :</b>	<b>3</b>	<b>\$772,645</b>	<b>25</b>	<b>\$2,272,530</b>	<b>36</b>	<b>\$5,194,075</b>
<b>Families in Society, Institute for</b>						
	3	\$26,950	28	\$3,451,121	21	\$2,222,529
<b>Total :</b>	<b>3</b>	<b>\$26,950</b>	<b>28</b>	<b>\$3,451,121</b>	<b>21</b>	<b>\$2,222,529</b>
<b>Honors College, South Carolina</b>						
	2	\$635,694	9	\$1,409,237	2	\$79,482

DEPARTMENT	CURRENT MONTH MAY - 2003		YEAR TO DATE FY 2003		YEAR TO DATE FY 2002	
<b>Total :</b>	<b>2</b>	<b>\$635,694</b>	<b>9</b>	<b>\$1,409,237</b>	<b>2</b>	<b>\$79,482</b>
<b>Hospitality, Retail &amp; Sports Management,</b>						
Administrative Information Management	0	\$0	1	\$244,450	1	\$490,886
Hospitality, Retail & Sports Mgmt - (Dean)	1	\$91,899	2	\$129,899	1	\$25,000
Hotel, Restaurant & Tourism Administration	0	\$0	0	\$0	1	\$25,000
Retailing Studies, Center for	1	\$679,010	4	\$2,507,184	3	\$26,750
Sport Administration	0	\$0	0	\$0	1	\$14,000
<b>Total :</b>	<b>2</b>	<b>\$770,909</b>	<b>7</b>	<b>\$2,881,533</b>	<b>7</b>	<b>\$581,636</b>
<b>Institutional Planning</b>						
<b>Law Enforcement &amp; Safety</b>	0	\$0	0	\$0	1	\$21,600
<b>Total :</b>	<b>0</b>	<b>\$0</b>	<b>0</b>	<b>\$0</b>	<b>1</b>	<b>\$21,600</b>
<b>Law, School of</b>						
Law, School of	0	\$0	12	\$1,147,518	14	\$1,984,676
<b>Total :</b>	<b>0</b>	<b>\$0</b>	<b>12</b>	<b>\$1,147,518</b>	<b>14</b>	<b>\$1,984,676</b>
<b>Liberal Arts, College of</b>						
Anthropology	0	\$0	4	\$429,434	1	\$18,525
Archaeology & Anthropology, SC Institute of	0	\$0	9	\$2,287,518	12	\$1,222,358
Art	1	\$28,000	4	\$271,200	4	\$88,954
Comparative Literature	0	\$0	0	\$0	1	\$1,200
Criminology & Criminal Justice, Department of	0	\$0	2	\$69,771	0	\$0
English	2	\$79,000	3	\$128,201	4	\$96,790
Geography	2	\$111,776	21	\$1,403,926	16	\$757,396
Government & International Studies	0	\$0	8	\$159,366	10	\$306,654
History	3	\$31,659	12	\$238,159	16	\$213,198
International Studies, Institute of	0	\$0	4	\$477,045	5	\$758,524
Languages, Literatures, and Cultures, Department	0	\$0	1	\$24,000	1	\$7,533
McKissick Museum	0	\$0	4	\$109,849	6	\$140,020
Philosophy	0	\$0	1	\$450,331	1	\$10,000
Psychology	3	\$429,424	49	\$11,497,734	28	\$3,014,002
Public Service & Policy Research, Institute for	0	\$0	16	\$1,214,933	23	\$3,334,076
Religious Studies	0	\$0	1	\$25,000	1	\$50,000
Sociology	0	\$0	8	\$633,322	5	\$374,712
Southern Studies, Institute for	0	\$0	4	\$564,903	2	\$249,388
<b>Total :</b>	<b>11</b>	<b>\$679,859</b>	<b>151</b>	<b>\$19,984,692</b>	<b>136</b>	<b>\$10,643,330</b>
<b>Mass Communications &amp; Information</b>						
Journalism & Mass Communications, School of	1	\$4,040	17	\$1,421,513	10	\$214,458
Library & Information Sciences, School of	0	\$0	7	\$147,928	0	\$0
Mass Communications & Information Studies, Colleg	0	\$0	1	\$89,954	0	\$0
<b>Total :</b>	<b>1</b>	<b>\$4,040</b>	<b>25</b>	<b>\$1,659,395</b>	<b>10</b>	<b>\$214,458</b>
<b>Medicine, School of</b>						
Basic Science Research	0	\$0	1	\$25,000	0	\$0
Biochemistry *	0	\$0	0	\$0	5	\$909,312
Cancer Center, South Carolina	0	\$0	9	\$158,382	3	\$105,968
Cell & Developmental Biology & Anatomy	3	\$434,533	22	\$4,167,341	16	\$2,595,907

DEPARTMENT	CURRENT MONTH MAY - 2003		YEAR TO DATE FY 2003		YEAR TO DATE FY 2002	
Cell Biology & Neurosciences	0	\$0	0	\$0	5	\$776,827
Family & Preventive Medicine	3	\$821,340	11	\$2,076,646	9	\$1,397,436
Internal Medicine	0	\$0	10	\$1,061,192	18	\$887,597
Medicine Library	0	\$0	1	\$27,042	1	\$3,801
Medicine, School of - (Dean)	0	\$0	0	\$0	1	\$27,493
Medicine, School of - (Graduate Program)	0	\$0	0	\$0	1	\$17,680
Neuropsychiatry	0	\$0	7	\$687,920	12	\$1,106,008
Obstetrics & Gynecology	0	\$0	1	\$71,165	1	\$59,000
Ophthalmology	1	\$662,968	2	\$693,168	1	\$35,000
Pathology	0	\$0	0	\$0	12	\$1,588,225
Pathology & Microbiology	5	\$1,015,635	19	\$2,914,971	10	\$2,289,964
Pediatrics/Developmental Disabilities, Center for	1	\$2,400	17	\$2,627,635	23	\$2,846,545
Pharmacology, Physiology & Neuroscience	1	\$291,000	20	\$3,816,431	22	\$1,867,198
Radiology	0	\$0	0	\$0	2	\$454,805
Research & Special Projects	0	\$0	9	\$436,443	9	\$210,375
Surgery	0	\$0	7	\$734,482	8	\$837,423
<b>Total :</b>	<b>14</b>	<b>\$3,227,876</b>	<b>136</b>	<b>\$19,497,818</b>	<b>159</b>	<b>\$18,016,564</b>
<b>Music, School of</b>	1	\$17,295	2	\$18,295	2	\$175,540
<b>Total :</b>	<b>1</b>	<b>\$17,295</b>	<b>2</b>	<b>\$18,295</b>	<b>2</b>	<b>\$175,540</b>
<b>Nursing, College of</b>						
Academic & Student Affairs	1	\$14,648	7	\$1,664,572	7	\$2,700,827
Administrative & Clinical Nursing	0	\$0	3	\$853,025	6	\$1,166,108
Family & Community Health Nursing	0	\$0	3	\$945,427	8	\$1,131,200
<b>Total :</b>	<b>1</b>	<b>\$14,648</b>	<b>13</b>	<b>\$3,463,024</b>	<b>21</b>	<b>\$4,998,135</b>
<b>Pharmacy, College of</b>						
Basic Pharmaceutical Sciences	0	\$0	15	\$1,483,893	17	\$2,316,935
Palmetto Poison Center	0	\$0	1	\$5,000	2	\$216,240
Pharmacy & Health Outcomes Sci.	0	\$0	1	\$35,000	3	\$75,000
Pharmacy - (General)	1	\$850	1	\$850	0	\$0
Pharmacy Practice	0	\$0	0	\$0	5	\$156,085
<b>Total :</b>	<b>1</b>	<b>\$850</b>	<b>18</b>	<b>\$1,524,743</b>	<b>27</b>	<b>\$2,764,260</b>
<b>Provost, Office of the</b>						
TRIO Programs	0	\$0	3	\$1,078,453	0	\$0
<b>Total :</b>	<b>0</b>	<b>\$0</b>	<b>3</b>	<b>\$1,078,453</b>	<b>0</b>	<b>\$0</b>
<b>Public Health, Norman J. Arnold School of</b>						
Communication Sciences & Disorders	1	\$11,554	10	\$701,090	4	\$157,667
Environmental Health Sciences	5	\$167,004	35	\$5,729,499	23	\$2,375,120
Epidemiology & Biostatistics	11	\$1,820,415	40	\$3,947,968	32	\$3,776,344
Exercise Science	5	\$487,083	27	\$3,267,991	29	\$1,996,047
Health Administration	2	\$3,550	31	\$667,979	23	\$389,427
Health Promotion, Education & Behavior	5	\$2,442,829	44	\$6,049,783	38	\$2,338,491
Health Services & Policy Research, Center for	1	\$40,728	7	\$378,978	7	\$689,640
Prevention Research Center	2	\$487,776	17	\$3,434,205	21	\$4,313,673
Public Health, Norman J. Arnold School of -Dean	0	\$0	6	\$2,293,699	3	\$2,450,731
<b>Total :</b>	<b>32</b>	<b>\$5,460,939</b>	<b>217</b>	<b>\$26,471,193</b>	<b>180</b>	<b>\$18,487,140</b>

DEPARTMENT	CURRENT MONTH MAY - 2003		YEAR TO DATE FY 2003		YEAR TO DATE FY 2002	
<b>Regional and Four-Year Campuses</b>						
USC Aiken	2	\$24,318	31	\$5,259,829	23	\$1,985,186
USC Beaufort	1	\$20,000	20	\$3,068,875	16	\$1,767,855
USC Lancaster	0	\$0	6	\$1,112,499	3	\$317,360
USC Salkehatchie	1	\$15,000	12	\$244,864	6	\$395,543
USC Spartanburg	2	\$291,000	26	\$5,525,323	37	\$2,341,696
USC Sumter	0	\$0	0	\$0	2	\$192,079
USC Union	1	\$64,643	3	\$560,924	0	\$0
<b>Total :</b>	<b>7</b>	<b>\$414,961</b>	<b>98</b>	<b>\$15,772,314</b>	<b>87</b>	<b>\$6,999,719</b>
<b>Research, Vice President for</b>						
Biomedical Research Infrastructure Network (BRIN)	0	\$0	2	\$2,299,020	0	\$0
NanoCenter	2	\$61,825	10	\$5,077,400	30	\$8,643,767
Research, Vice President for - (General)	0	\$0	0	\$0	1	\$1,999,484
Sponsored Programs & Research	0	\$0	0	\$0	2	\$160,000
Technology Incubator	0	\$0	1	\$160,000	1	\$12,000
<b>Total :</b>	<b>2</b>	<b>\$61,825</b>	<b>13</b>	<b>\$7,536,420</b>	<b>34</b>	<b>\$10,815,251</b>
<b>Science and Mathematics, College of</b>						
Baruch Institute	5	\$246,770	34	\$5,175,381	36	\$5,737,490
Biological Sciences	3	\$443,875	67	\$10,388,788	64	\$9,335,120
Chemistry & Biochemistry	9	\$1,914,270	88	\$12,168,918	59	\$9,154,756
COBRE: Center for Colon Cancer Research	0	\$0	1	\$478,768	0	\$0
Geological Sciences	6	\$330,820	65	\$6,337,829	59	\$6,370,083
Mathematics	0	\$0	19	\$1,263,347	14	\$728,903
Physics & Astronomy	1	\$8,000	30	\$3,316,419	29	\$4,423,651
Science & Math Administration	1	\$8,000	5	\$2,585,055	3	\$2,210,461
Science Education, Center for	1	\$8,000	3	\$42,845	5	\$483,077
Statistics	1	\$109,125	22	\$1,135,249	15	\$380,787
<b>Total :</b>	<b>27</b>	<b>\$3,068,860</b>	<b>334</b>	<b>\$42,892,599</b>	<b>284</b>	<b>\$38,824,328</b>
<b>Social Work, College of</b>	14	\$171,458	69	\$2,250,553	72	\$2,243,799
<b>Total :</b>	<b>14</b>	<b>\$171,458</b>	<b>69</b>	<b>\$2,250,553</b>	<b>72</b>	<b>\$2,243,799</b>
<b>Student Affairs, Division of</b>						
Housing & Residential Services	0	\$0	0	\$0	1	\$25,000
Student Health	1	\$333,831	6	\$677,773	2	\$17,491
Student Life	0	\$0	4	\$259,580	3	\$66,411
<b>Total :</b>	<b>1</b>	<b>\$333,831</b>	<b>10</b>	<b>\$937,353</b>	<b>6</b>	<b>\$108,902</b>
<b>University 101</b>	0	\$0	1	\$23,925	0	\$0
<b>Total :</b>	<b>0</b>	<b>\$0</b>	<b>1</b>	<b>\$23,925</b>	<b>0</b>	<b>\$0</b>
<b>University Libraries</b>						
Thomas Cooper Library	0	\$0	3	\$468,068	1	\$90,000
<b>Total :</b>	<b>0</b>	<b>\$0</b>	<b>3</b>	<b>\$468,068</b>	<b>1</b>	<b>\$90,000</b>

DEPARTMENT	CURRENT MONTH MAY - 2003		YEAR TO DATE FY 2003		YEAR TO DATE FY 2002	
<b>Report TOTAL :</b>	<b>142</b>	<b>\$17,368,905</b>	<b>1475</b>	<b>\$198,797,612</b>	<b>1359</b>	<b>\$156,415,897</b>

\* - Biochemistry represents faculty with a dual appointment to the Department of Chemistry and the School of Medicine. The figures are included in both division totals but only once in the overall total.