



**MEMORANDUM**

To: William C. Harris, Ph.D.  
 Executive Director

From: Anthony M. Boccanfuso, Ph.D.  
 Managing Director

RE: Report of Sponsored Program Activity for May 2002

Date: June 14, 2002

The University received awards totaling \$9.5 million during the month, a 32.6% decrease from last June (\$14.0 million). **Thus far in the fiscal year, award dollars are 15.5% behind last year, \$112.4 million vs. \$95.1 million.**

Faculty submitted 136 proposals requesting \$18.9 million during May. Thus far in the fiscal year, SPAR has processed 1376 proposals requesting \$158.3 million, compared to last year's totals of 1392 and \$167.6 million.

	May FY02	YTD FY01	YTD FY02	YTD Change
Award Dollars	\$9,474,067	\$112,434,510	\$95,065,394	(-15.45%)
Research Expenditures	6,034,797	-	50,170,178	-
Proposals Submitted	136	1392	1376	(-1.15)
Proposal Dollars Requested	\$18,926,321	\$167,590,115	\$158,338,777	(-5.52)

**HIGHLIGHTS**

	<u>YTD 01</u>	<u>YTD 02</u>
School of Public Health	11,920,135	17,115,759
School of Medicine	13,351,069	14,358,538
College of Engineering	25,918,760	12,900,337
College of Liberal Arts	9,371,112	7,569,176
College of Science & Math	15,336,326	13,584,644

cc: K. McCoy  
 R. Steven Etheredge  
 J. Odom

# Sponsored Programs and Research Monthly Report

## SUMMARY OF AWARDS MAY - 2002

### By Purpose

Research Awards - SPAR	\$4,315,748
Research Awards - USCRF	\$3,045,614
Training Awards	\$91,596
Service Awards	\$1,643,322
Equipment Awards	\$200,000
Graduate Assistantship Awards	\$177,787
<b>TOTAL:</b>	<b>\$9,474,067</b>

### By Source

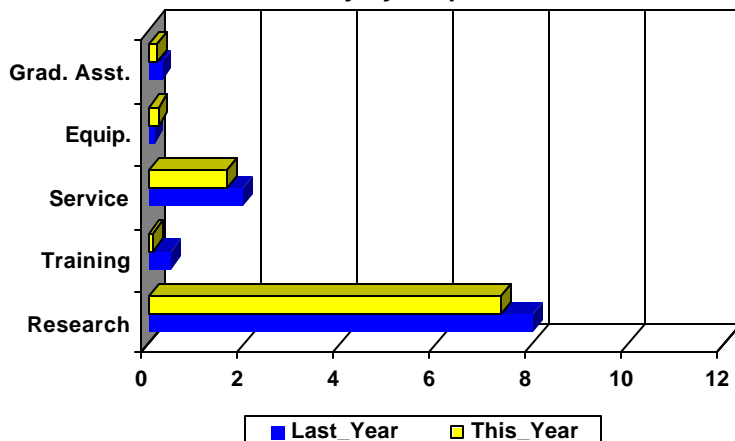
Federal Awards - SPAR	\$4,984,339
Federal Awards - USCRF	\$3,255,131
Private Awards - SPAR	\$592,513
Private Awards - USCRF	\$222,411
State Awards	\$419,673
<b>TOTAL:</b>	<b>\$9,474,067</b>

## COMPARISON OF AMOUNT RECEIVED

MAY - 2002 vs. MAY - 2001

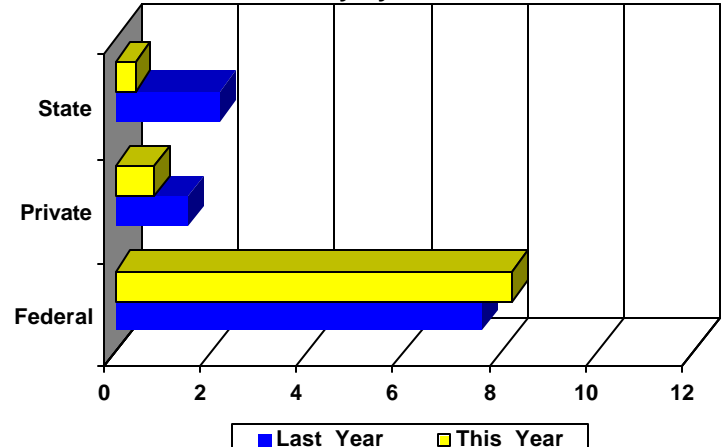
Amounts Received  
(In millions of dollars)

Summary by Purpose



Amounts Received  
(In millions of dollars)

Summary by Source



## AWARDS BY DEPARTMENT

DEPARTMENT	CURRENT MONTH MAY - 2002		YEAR TO DATE FY 2002		YEAR TO DATE FY 2001	
<b>Business and Finance</b>						
Campus Services	0	\$0	0	\$0	2	\$12,000
Recycling & Waste Management	0	\$0	1	\$9,970	0	\$0
<b>Total :</b>	<b>0</b>	<b>\$0</b>	<b>1</b>	<b>\$9,970</b>	<b>2</b>	<b>\$12,000</b>
<b>College of Criminal Justice</b>						
	0	\$0	2	\$80,392	9	\$834,428
<b>Total :</b>	<b>0</b>	<b>\$0</b>	<b>2</b>	<b>\$80,392</b>	<b>9</b>	<b>\$834,428</b>
<b>College of Education</b>						
Education	0	\$0	2	\$35,760	2	\$16,054
Education Leadership & Policies	0	\$0	5	\$211,929	13	\$567,353
Educational Psychology	3	\$70,820	17	\$576,249	11	\$734,285
Instruction & Teacher Education	2	\$78,000	22	\$2,580,917	24	\$2,396,035
Office of Research	0	\$0	0	\$0	1	\$14,295
Physical Education	1	\$757,110	8	\$1,117,110	3	\$1,272,785
SC Educational Policy Center	0	\$0	1	\$15,500	5	\$352,869
School Improvement Council Assistance	1	\$50,000	4	\$209,805	1	\$128,805
USC Children's Center	0	\$0	0	\$0	1	\$2,000
<b>Total :</b>	<b>7</b>	<b>\$955,930</b>	<b>59</b>	<b>\$4,747,270</b>	<b>61</b>	<b>\$5,484,481</b>
<b>College of Engineering &amp; Information</b>						
Chemical Engineering	4	\$272,917	36	\$3,224,995	43	\$3,061,241
Civil & Environmental Engineering	2	\$234,540	16	\$1,493,779	20	\$1,867,847
Computer Science & Engineering	2	\$337,474	15	\$521,850	30	\$677,750
Electrical Engineering	3	\$562,050	13	\$3,021,491	19	\$13,352,263
Engineering & Information Technology, College of	0	\$0	4	\$1,662,495	4	\$2,206,492
Mechanical Engineering	4	\$95,424	28	\$1,470,012	35	\$3,850,967
SCAMP	5	\$1,063,043	11	\$1,505,715	4	\$902,200
<b>Total :</b>	<b>20</b>	<b>\$2,565,448</b>	<b>123</b>	<b>\$12,900,337</b>	<b>155</b>	<b>\$25,918,760</b>
<b>College of Hospitality, Retail &amp; Sports</b>						
Center For Retailing Studies	0	\$0	2	\$36,429	0	\$0
Hospitality, Retail & Sports Mgmt - Dean's Office	0	\$0	1	\$62,500	5	\$150,500
Hotel, Restaurant & Tourism Administration	0	\$0	0	\$0	1	\$9,600
Sport Administration	0	\$0	1	\$14,000	1	\$13,000
<b>Total :</b>	<b>0</b>	<b>\$0</b>	<b>4</b>	<b>\$112,929</b>	<b>7</b>	<b>\$173,100</b>
<b>College of Journalism &amp; Mass</b>						
	2	\$7,367	12	\$215,066	23	\$601,621
<b>Total :</b>	<b>2</b>	<b>\$7,367</b>	<b>12</b>	<b>\$215,066</b>	<b>23</b>	<b>\$601,621</b>
<b>College of Liberal Arts</b>						
African-American Studies Program	0	\$0	0	\$0	1	\$1,000
Anthropology	0	\$0	0	\$0	2	\$19,314
Archaeology & Anthropology, Institute of	0	\$0	13	\$1,586,613	14	\$1,345,727
Art	1	\$24,384	2	\$27,384	2	\$79,916
Comparative Literature	0	\$0	1	\$1,200	0	\$0
English	0	\$0	3	\$60,075	4	\$16,485
French & Classics	0	\$0	1	\$7,533	0	\$0

DEPARTMENT	CURRENT MONTH MAY - 2002		YEAR TO DATE FY 2002		YEAR TO DATE FY 2001	
Geography	4	\$94,501	21	\$836,974	19	\$907,295
Government & International Studies	0	\$0	8	\$157,194	12	\$137,767
History	4	\$35,759	26	\$92,585	26	\$221,124
Institute for Southern Studies	1	\$119,000	4	\$194,274	4	\$392,111
International Studies, Institute of	1	\$109,343	3	\$362,110	2	\$128,997
Liberal Arts Dean's Office	0	\$0	1	\$6,000	0	\$0
McKissick Museum	1	\$1,200	5	\$21,270	4	\$75,359
Naval Science	0	\$0	2	\$4,000	4	\$6,100
Philosophy	0	\$0	2	\$29,644	5	\$50,309
Psychology	10	\$354,979	31	\$1,675,170	41	\$2,831,084
Public Service & Policy Research, Institute for	1	\$15,000	19	\$735,215	40	\$1,418,818
Religious Studies	0	\$0	1	\$50,000	1	\$35,000
Sociology	0	\$0	1	\$6,018	6	\$189,495
Theatre, Speech & Dance	0	\$0	0	\$0	1	\$6,170
Trio Programs	1	\$452,755	7	\$1,715,917	6	\$1,509,041
<b>Total :</b>	<b>24</b>	<b>\$1,206,921</b>	<b>151</b>	<b>\$7,569,176</b>	<b>194</b>	<b>\$9,371,112</b>
<b>College of Library &amp; Information Science</b>	1	\$9,488	5	\$63,053	7	\$64,329
<b>Total :</b>	<b>1</b>	<b>\$9,488</b>	<b>5</b>	<b>\$63,053</b>	<b>7</b>	<b>\$64,329</b>
<b>College of Nursing</b>						
Academic & Student Affairs	1	\$2,000	15	\$847,001	12	\$812,044
Administrative & Clinical Nursing	0	\$0	1	\$86,003	5	\$386,144
Family & Community Health Nursing	0	\$0	2	\$36,917	6	\$325,100
<b>Total :</b>	<b>1</b>	<b>\$2,000</b>	<b>18</b>	<b>\$969,921</b>	<b>23</b>	<b>\$1,523,288</b>
<b>College of Pharmacy</b>						
Basic Pharmaceutical Sciences	0	\$0	6	\$754,249	9	\$741,304
Palmetto Poison Center	0	\$0	3	\$291,131	3	\$85,000
Pharmacy & Health Outcomes Sci.	0	\$0	5	\$96,611	11	\$297,666
Pharmacy Practice	1	\$5,000	4	\$141,085	5	\$125,000
<b>Total :</b>	<b>1</b>	<b>\$5,000</b>	<b>18</b>	<b>\$1,283,076</b>	<b>28</b>	<b>\$1,248,970</b>
<b>College of Science and Math</b>						
Baruch Institute	7	\$348,588	27	\$2,219,355	24	\$1,643,759
Biological Research & Technology, Institute for	0	\$0	2	\$3,300	0	\$0
Biological Sciences	4	\$104,192	45	\$3,939,617	46	\$3,101,978
Center For Science Education	1	\$616,072	2	\$628,472	3	\$104,695
Chemistry & Biochemistry	7	\$313,380	46	\$3,459,878	64	\$4,780,559
Computer Science (moved to Engineering)	0	\$0	0	\$0	1	\$19,266
EPSCoR (moved to VP for Research)	0	\$0	0	\$0	5	\$211,885
Geological Sciences	5	\$196,475	55	\$2,453,615	32	\$1,646,985
Mathematics	4	\$372,000	7	\$573,669	13	\$799,913
Physics & Astronomy	4	\$702,711	13	\$1,921,495	27	\$2,957,752
Science & Math Administration	0	\$0	6	\$743,043	7	\$1,019,928
Statistics	1	\$36,500	12	\$296,805	20	\$590,497
<b>Total :</b>	<b>33</b>	<b>\$2,689,918</b>	<b>215</b>	<b>\$16,239,249</b>	<b>242</b>	<b>\$16,877,217</b>
<b>College of Social Work</b>	16	\$120,940	67	\$5,405,857	72	\$6,165,615
<b>Total :</b>	<b>16</b>	<b>\$120,940</b>	<b>67</b>	<b>\$5,405,857</b>	<b>72</b>	<b>\$6,165,615</b>

DEPARTMENT	CURRENT MONTH MAY - 2002		YEAR TO DATE FY 2002		YEAR TO DATE FY 2001	
<b>Division of Student Affairs</b>						
International Programs for Students	0	\$0	0	\$0	1	\$3,000
Student Health	0	\$0	3	\$313,265	1	\$4,951
Student Life	0	\$0	4	\$158,199	2	\$211,571
<b>Total :</b>	<b>0</b>	<b>\$0</b>	<b>7</b>	<b>\$471,464</b>	<b>4</b>	<b>\$219,522</b>
<b>English Program for Internationals</b>						
English Program For Internationals	0	\$0	1	\$265,492	1	\$272,096
<b>Total :</b>	<b>0</b>	<b>\$0</b>	<b>1</b>	<b>\$265,492</b>	<b>1</b>	<b>\$272,096</b>
<b>Enrollment Management</b>						
	0	\$0	1	\$33,047	0	\$0
<b>Total :</b>	<b>0</b>	<b>\$0</b>	<b>1</b>	<b>\$33,047</b>	<b>0</b>	<b>\$0</b>
<b>Institute for Families in Society</b>						
Families in Society, Institute for	2	\$70,490	24	\$2,240,173	22	\$2,245,289
<b>Total :</b>	<b>2</b>	<b>\$70,490</b>	<b>24</b>	<b>\$2,240,173</b>	<b>22</b>	<b>\$2,245,289</b>
<b>Institutional Planning</b>						
<b>Law School</b>						
Law School	2	\$205,840	14	\$1,295,397	14	\$1,423,941
<b>Total :</b>	<b>2</b>	<b>\$205,840</b>	<b>14</b>	<b>\$1,295,397</b>	<b>14</b>	<b>\$1,423,941</b>
<b>Moore School of Business</b>						
Business Administration - Division Of Research	1	\$6,265	63	\$1,127,927	59	\$1,204,292
Small Business Development Center	0	\$0	11	\$1,627,095	13	\$1,108,245
<b>Total :</b>	<b>1</b>	<b>\$6,265</b>	<b>74</b>	<b>\$2,755,022</b>	<b>72</b>	<b>\$2,312,537</b>
<b>Norman J. Arnold School of Public Health</b>						
Center for Health Services & Policy Research	0	\$0	9	\$830,938	0	\$0
Communication Sciences & Disorders	0	\$0	2	\$80,334	1	\$25,000
Environmental Health Sciences	2	\$116,142	49	\$2,017,228	34	\$1,746,540
Epidemiology & Biostatistics	0	\$0	34	\$3,741,480	30	\$2,855,271
Exercise Science	1	\$7,000	15	\$1,669,499	17	\$1,831,502
Health Administration	2	\$4,512	23	\$744,409	36	\$710,169
Health Promotion, Education & Behavior	4	\$102,166	39	\$1,189,928	43	\$1,603,042
Norman J. Arnold School of Public Health - Dean	0	\$0	4	\$3,474,760	3	\$546,170
Prevention Research Center	0	\$0	24	\$3,367,183	25	\$2,602,441
<b>Total :</b>	<b>9</b>	<b>\$229,820</b>	<b>199</b>	<b>\$17,115,759</b>	<b>189</b>	<b>\$11,920,135</b>
<b>Regional and Four-Year Campuses</b>						
Regional Campuses & Continuing Education	0	\$0	0	\$0	1	\$32,100
USC Aiken	3	\$94,877	23	\$1,069,398	28	\$1,622,205
USC Beaufort	1	\$50,000	17	\$385,697	11	\$542,987
USC Lancaster	0	\$0	4	\$260,153	6	\$456,882
USC Salkehatchie	1	\$2,000	6	\$542,747	6	\$505,264
USC Spartanburg	4	\$10,420	67	\$1,919,739	52	\$1,644,881
USC Sumter	0	\$0	5	\$253,208	7	\$403,896
USC Union	0	\$0	2	\$229,471	1	\$198,582

DEPARTMENT	CURRENT MONTH MAY - 2002		YEAR TO DATE FY 2002		YEAR TO DATE FY 2001	
<b>Total :</b>	<b>9</b>	<b>\$157,297</b>	<b>124</b>	<b>\$4,660,413</b>	<b>112</b>	<b>\$5,406,797</b>
<b>School of Medicine</b>						
Basic Science Research	0	\$0	1	\$209,244	0	\$0
Biochemistry *	5	\$416,726	26	\$2,725,532	21	\$1,648,649
Cell Biology & Neurosciences	1	\$225,638	6	\$601,006	5	\$678,090
Developmental Biology & Anatomy	1	\$15,000	16	\$1,504,394	10	\$1,063,060
Family & Preventive Medicine	0	\$0	9	\$649,273	6	\$860,323
Health & Safety	0	\$0	1	\$9,600	1	\$10,000
Internal Medicine	3	\$4,725	44	\$2,930,934	39	\$2,458,770
Medicine Library	0	\$0	2	\$137,048	0	\$0
Microbiology & Immunology	3	\$355,940	8	\$820,383	7	\$1,130,308
Neuropsychiatry	1	\$30,000	10	\$219,489	11	\$537,979
Obstetrics & Gynecology	0	\$0	1	\$59,000	2	\$70,525
Ophthalmology	0	\$0	1	\$10,000	0	\$0
Orthopaedic Surgery	0	\$0	0	\$0	2	\$7,250
Pathology	2	\$457,878	5	\$710,075	4	\$244,554
Pediatrics/Center for Developmental Disabilities	1	\$1,750	18	\$1,834,270	30	\$3,183,834
Pharmacology & Physiology	1	\$34,596	3	\$116,096	10	\$227,691
Radiology	0	\$0	1	\$401,974	1	\$400,313
Research & Special Projects	0	\$0	19	\$683,690	8	\$775,152
School of Medicine Graduate Program	0	\$0	0	\$0	2	\$35,360
South Carolina Cancer Center	0	\$0	6	\$151,014	2	\$11,711
Surgery	0	\$0	13	\$585,516	1	\$7,500
<b>Total :</b>	<b>18</b>	<b>\$1,542,253</b>	<b>190</b>	<b>\$14,358,538</b>	<b>162</b>	<b>\$13,351,069</b>
<b>School of Music</b>	0	\$0	1	\$35,937	1	\$38,914
<b>Total :</b>	<b>0</b>	<b>\$0</b>	<b>1</b>	<b>\$35,937</b>	<b>1</b>	<b>\$38,914</b>
<b>School of the Environment</b>						
Earth Sciences & Resources Institute	1	\$33,578	6	\$884,840	7	\$3,211,459
School of the Environment	0	\$0	10	\$606,733	6	\$749,458
<b>Total :</b>	<b>1</b>	<b>\$33,578</b>	<b>16</b>	<b>\$1,491,573</b>	<b>13</b>	<b>\$3,960,917</b>
<b>South Carolina Honors College</b>	0	\$0	1	\$102,676	1	\$6,000
<b>Total :</b>	<b>0</b>	<b>\$0</b>	<b>1</b>	<b>\$102,676</b>	<b>1</b>	<b>\$6,000</b>
<b>University Libraries</b>						
Libraries & Collections	0	\$0	0	\$0	1	\$1,666
Thomas Cooper Library	0	\$0	5	\$1,133,532	2	\$260,297
<b>Total :</b>	<b>0</b>	<b>\$0</b>	<b>5</b>	<b>\$1,133,532</b>	<b>3</b>	<b>\$261,963</b>
<b>Vice President for Research</b>						
EPSCoR	0	\$0	0	\$0	46	\$2,834,258
NanoCenter	0	\$0	8	\$1,705,429	0	\$0
Sponsored Programs & Research	0	\$0	1	\$16,598	1	\$20,000
Vice President for Research	0	\$0	0	\$0	1	\$1,534,800
Vice President for Research - General	1	\$82,238	4	\$513,580	0	\$0
<b>Total :</b>	<b>1</b>	<b>\$82,238</b>	<b>13</b>	<b>\$2,235,607</b>	<b>48</b>	<b>\$4,389,058</b>

DEPARTMENT	CURRENT MONTH MAY - 2002		YEAR TO DATE FY 2002		YEAR TO DATE FY 2001	
<b>Report TOTAL :</b>	<b>143</b>	<b>\$9,474,067</b>	<b>1319</b>	<b>\$95,065,394</b>	<b>1444</b>	<b>\$112,434,510</b>

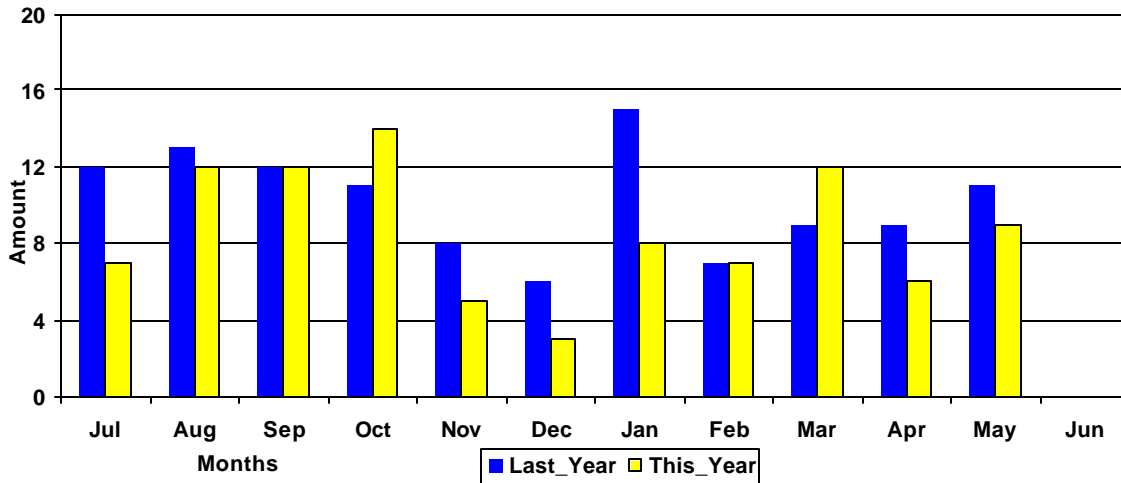
\* - Biochemistry represents faculty with a dual appointment to the Department of Chemistry and the School of Medicine. The figures are included in both division totals but only once in the overall total.

# Funding Agency Comparison Report

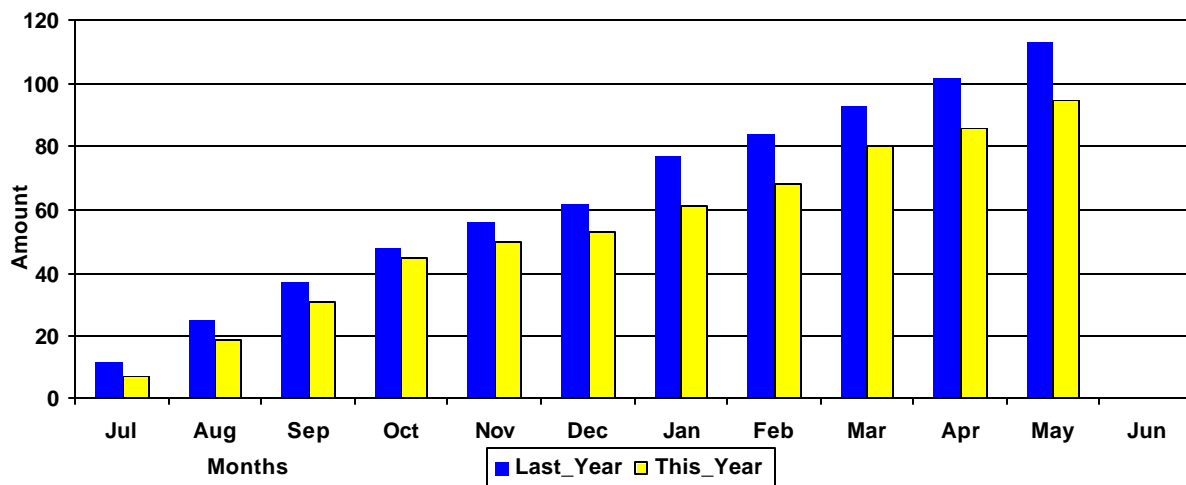
## Year-To-Date -MAY - 2002

		<u>FISCAL YEAR - 2002</u>		<u>FISCAL YEAR - 2001</u>	
<b>NSF Awards</b>	92	\$8,606,132	99	\$7,611,587	
<b>NIH Awards</b>	113	\$10,983,494	119	\$12,199,361	
<b>Dept. Of Defense Awards</b>	53	\$4,904,820	74	\$20,424,299	
<b>Dept. Of Education Awards</b>	71	\$8,102,440	69	\$9,471,733	
<b>Dept. Of Energy Awards</b>	34	\$6,284,476	46	\$4,581,902	
<b>SCUREF Awards from DOE</b>	11	\$1,217,267	13	\$1,276,337	
<b>State and Municipalities Awards</b>	164	\$7,350,696	248	\$13,813,172	

**Amounts Awarded**  
(In millions of dollars)



**Cumulative Amounts Awarded**  
(In millions of dollars)



# PROPOSALS BY DEPARTMENT

DEPARTMENT	CURRENT MONTH MAY - 2002		YEAR TO DATE FY 2002		YEAR TO DATE FY 2001	
<b>Business and Finance</b>						
Campus Services	0	\$0	1	\$7,497	2	\$11,970
Facilities Planning/Energy Services	0	\$0	0	\$0	1	\$5,375
Recycling & Waste Management	0	\$0	1	\$10,000	0	\$0
<b>Total :</b>	<b>0</b>	<b>\$0</b>	<b>2</b>	<b>\$17,497</b>	<b>3</b>	<b>\$17,345</b>
<b>College of Criminal Justice</b>						
	0	\$0	5	\$237,263	8	\$411,951
<b>Total :</b>	<b>0</b>	<b>\$0</b>	<b>5</b>	<b>\$237,263</b>	<b>8</b>	<b>\$411,951</b>
<b>College of Education</b>						
Education	0	\$0	4	\$288,984	2	\$77,500
Education Leadership & Policies	1	\$116,675	8	\$407,006	11	\$406,598
Educational Psychology	3	\$141,832	22	\$1,509,947	14	\$940,201
Instruction & Teacher Education	3	\$412,789	11	\$744,663	20	\$3,582,202
Physical Education	0	\$0	6	\$1,114,110	3	\$1,292,785
SC Educational Policy Center	0	\$0	2	\$16,500	2	\$92,816
School Improvement Council Assistance	1	\$50,000	2	\$75,250	0	\$0
USC Children's Center	0	\$0	0	\$0	2	\$32,000
<b>Total :</b>	<b>8</b>	<b>\$721,296</b>	<b>55</b>	<b>\$4,156,460</b>	<b>54</b>	<b>\$6,424,102</b>
<b>College of Engineering &amp; Information</b>						
Chemical Engineering	2	\$118,882	39	\$3,026,827	51	\$10,174,643
Civil & Environmental Engineering	1	\$55,667	15	\$1,250,314	18	\$1,163,592
Computer Science & Engineering	1	\$0	32	\$3,164,533	36	\$2,210,707
Electrical Engineering	1	\$2,500,000	20	\$10,267,929	12	\$7,127,402
Engineering & Information Technology, College of	0	\$0	4	\$353,336	2	\$225,000
Mechanical Engineering	4	\$555,401	36	\$5,443,910	48	\$4,572,372
SCAMP	0	\$0	3	\$1,422,672	2	\$812,000
<b>Total :</b>	<b>9</b>	<b>\$3,229,950</b>	<b>149</b>	<b>\$24,929,521</b>	<b>169</b>	<b>\$26,285,716</b>
<b>College of Hospitality, Retail &amp; Sports</b>						
Administrative Information Management	1	\$490,886	1	\$490,886	0	\$0
Center For Retailing Studies	0	\$0	3	\$26,750	1	\$11,429
Hospitality, Retail & Sports Mgmt - Dean's Office	0	\$0	1	\$25,000	1	\$25,000
Hotel, Restaurant & Tourism Administration	0	\$0	1	\$25,000	1	\$9,600
Sport Administration	0	\$0	1	\$14,000	1	\$13,000
<b>Total :</b>	<b>1</b>	<b>\$490,886</b>	<b>7</b>	<b>\$581,636</b>	<b>4</b>	<b>\$59,029</b>
<b>College of Journalism &amp; Mass</b>						
	2	\$7,367	10	\$214,458	23	\$879,315
<b>Total :</b>	<b>2</b>	<b>\$7,367</b>	<b>10</b>	<b>\$214,458</b>	<b>23</b>	<b>\$879,315</b>
<b>College of Liberal Arts</b>						
African-American Studies Program	0	\$0	0	\$0	1	\$1,000
Anthropology	0	\$0	1	\$18,525	1	\$72,250
Archaeology & Anthropology, Institute of	1	\$10,886	12	\$1,222,358	14	\$1,509,782
Art	0	\$0	4	\$88,954	2	\$151,916
Comparative Literature	0	\$0	1	\$1,200	0	\$0
English	0	\$0	4	\$96,790	5	\$80,095

DEPARTMENT	CURRENT MONTH		YEAR TO DATE		YEAR TO DATE	
	MAY - 2002		FY 2002		FY 2001	
French & Classics	0	\$0	1	\$7,533	0	\$0
Geography	0	\$0	16	\$757,396	12	\$634,388
Government & International Studies	0	\$0	10	\$306,654	7	\$208,167
History	2	\$26,992	16	\$213,198	15	\$214,956
Institute for Southern Studies	0	\$0	2	\$249,388	1	\$262,040
International Studies, Institute of	0	\$0	5	\$758,524	1	\$37,946
Linguistics Program	0	\$0	0	\$0	2	\$41,892
McKissick Museum	0	\$0	6	\$140,020	5	\$127,255
Philosophy	0	\$0	1	\$10,000	3	\$20,979
Psychology	4	\$58,748	28	\$3,014,002	40	\$9,094,413
Public Service & Policy Research, Institute for	2	\$375,525	23	\$3,334,076	38	\$2,330,835
Religious Studies	0	\$0	1	\$50,000	1	\$35,000
Sociology	0	\$0	5	\$374,712	7	\$242,003
Spanish, Italian, & Portuguese	0	\$0	0	\$0	1	\$49,941
Theatre, Speech & Dance	0	\$0	0	\$0	1	\$6,170
Trio Programs	2	\$680,982	6	\$1,438,772	8	\$1,705,146
<b>Total :</b>	<b>11</b>	<b>\$1,153,133</b>	<b>142</b>	<b>\$12,082,102</b>	<b>165</b>	<b>\$16,826,174</b>
<b>College of Library &amp; Information Science</b>	1	\$9,488	6	\$99,707	7	\$151,136
<b>Total :</b>	<b>1</b>	<b>\$9,488</b>	<b>6</b>	<b>\$99,707</b>	<b>7</b>	<b>\$151,136</b>
<b>College of Nursing</b>						
Academic & Student Affairs	2	\$284,791	7	\$2,696,078	6	\$479,600
Administrative & Clinical Nursing	2	\$98,266	6	\$1,169,721	6	\$249,003
Family & Community Health Nursing	2	\$375,018	8	\$1,131,200	7	\$2,614,351
<b>Total :</b>	<b>6</b>	<b>\$758,075</b>	<b>21</b>	<b>\$4,996,999</b>	<b>19</b>	<b>\$3,342,954</b>
<b>College of Pharmacy</b>						
Basic Pharmaceutical Sciences	3	\$445,000	17	\$2,316,935	19	\$2,020,353
Palmetto Poison Center	1	\$210,990	2	\$216,240	3	\$330,881
Pharmacy & Health Outcomes Sci.	0	\$0	3	\$75,000	11	\$417,781
Pharmacy Practice	1	\$10,000	5	\$156,085	4	\$136,428
<b>Total :</b>	<b>5</b>	<b>\$665,990</b>	<b>27</b>	<b>\$2,764,260</b>	<b>37</b>	<b>\$2,905,443</b>
<b>College of Science and Math</b>						
Baruch Institute	2	\$113,813	36	\$5,737,490	39	\$3,583,267
Biological Sciences	5	\$936,140	64	\$9,335,120	74	\$9,075,201
Center For Science Education	1	\$267,722	5	\$592,763	4	\$132,986
Chemistry & Biochemistry	3	\$347,500	60	\$9,164,756	80	\$14,927,109
EPSCoR (moved to VP for Research)	0	\$0	0	\$0	1	\$40,000
Geological Sciences	9	\$908,945	59	\$6,370,083	56	\$6,314,652
Mathematics	0	\$0	14	\$728,903	14	\$948,775
Physics & Astronomy	2	\$195,760	29	\$4,423,651	28	\$8,219,605
Science & Math Administration	0	\$0	3	\$2,210,461	8	\$1,574,443
Statistics	2	\$42,415	14	\$370,787	15	\$520,191
<b>Total :</b>	<b>24</b>	<b>\$2,812,295</b>	<b>284</b>	<b>\$38,934,014</b>	<b>319</b>	<b>\$45,336,229</b>
<b>College of Social Work</b>	21	\$488,780	72	\$2,243,799	75	\$8,384,279
<b>Total :</b>	<b>21</b>	<b>\$488,780</b>	<b>72</b>	<b>\$2,243,799</b>	<b>75</b>	<b>\$8,384,279</b>
<b>Division of Student Affairs</b>						

DEPARTMENT	CURRENT MONTH MAY - 2002		YEAR TO DATE FY 2002		YEAR TO DATE FY 2001	
Housing & Residential Services	0	\$0	1	\$25,000	0	\$0
Student Health	0	\$0	2	\$17,491	4	\$606,435
Student Life	0	\$0	3	\$66,411	2	\$153,362
<b>Total :</b>	<b>0</b>	<b>\$0</b>	<b>6</b>	<b>\$108,902</b>	<b>6</b>	<b>\$759,797</b>
<b>English Program for Internationals</b>						
English Program For Internationals	0	\$0	1	\$265,492	1	\$232,149
<b>Total :</b>	<b>0</b>	<b>\$0</b>	<b>1</b>	<b>\$265,492</b>	<b>1</b>	<b>\$232,149</b>
<b>Institute for Families in Society</b>						
Families in Society, Institute for	2	\$401,958	21	\$2,222,529	19	\$3,239,937
<b>Total :</b>	<b>2</b>	<b>\$401,958</b>	<b>21</b>	<b>\$2,222,529</b>	<b>19</b>	<b>\$3,239,937</b>
<b>Institutional Planning</b>						
<b>Law Enforcement &amp; Safety</b>						
	0	\$0	1	\$21,600	2	\$67,528
<b>Total :</b>	<b>0</b>	<b>\$0</b>	<b>1</b>	<b>\$21,600</b>	<b>2</b>	<b>\$67,528</b>
<b>Law School</b>						
Law School	0	\$0	14	\$1,984,676	11	\$1,332,522
<b>Total :</b>	<b>0</b>	<b>\$0</b>	<b>14</b>	<b>\$1,984,676</b>	<b>11</b>	<b>\$1,332,522</b>
<b>Moore School of Business</b>						
Business Administration - Division Of Research	1	\$15,020	50	\$878,412	52	\$926,309
Small Business Development Center	1	\$5,640	7	\$2,588,813	5	\$2,687,838
<b>Total :</b>	<b>2</b>	<b>\$20,660</b>	<b>57</b>	<b>\$3,467,225</b>	<b>57</b>	<b>\$3,614,147</b>
<b>Norman J. Arnold School of Public Health</b>						
Center for Health Services & Policy Research	1	\$147,207	7	\$689,640	0	\$0
Communication Sciences & Disorders	1	\$5,000	4	\$157,667	1	\$199,011
Environmental Health Sciences	0	\$0	23	\$2,375,120	21	\$1,720,990
Epidemiology & Biostatistics	5	\$1,242,373	32	\$3,776,344	35	\$5,996,337
Exercise Science	1	\$162,545	29	\$1,996,047	16	\$1,130,198
Health Administration	4	\$71,179	23	\$389,427	36	\$272,195
Health Promotion, Education & Behavior	3	\$540,101	38	\$2,385,399	39	\$2,094,364
Norman J. Arnold School of Public Health - Dean	3	\$2,450,731	3	\$2,450,731	4	\$2,197,730
Prevention Research Center	5	\$833,163	21	\$4,313,673	21	\$2,161,859
<b>Total :</b>	<b>23</b>	<b>\$5,452,299</b>	<b>180</b>	<b>\$18,534,048</b>	<b>173</b>	<b>\$15,772,684</b>
<b>Regional and Four-Year Campuses</b>						
USC Aiken	0	\$0	23	\$1,985,186	24	\$2,265,668
USC Beaufort	1	\$19,750	16	\$1,767,855	13	\$970,382
USC Lancaster	0	\$0	3	\$317,360	3	\$370,165
USC Salkehatchie	2	\$40,000	6	\$395,543	8	\$555,934
USC Spartanburg	0	\$0	37	\$2,356,966	31	\$1,881,261
USC Sumter	0	\$0	2	\$192,079	6	\$962,900
USC Union	0	\$0	0	\$0	1	\$299,376
<b>Total :</b>	<b>3</b>	<b>\$59,750</b>	<b>87</b>	<b>\$7,014,989</b>	<b>86</b>	<b>\$7,305,686</b>

DEPARTMENT	CURRENT MONTH MAY - 2002		YEAR TO DATE FY 2002		YEAR TO DATE FY 2001	
<b>School of Medicine</b>						
Animal Resources Facility	0	\$0	0	\$0	1	\$128,159
Biochemistry *	0	\$0	20	\$5,593,858	10	\$1,939,816
Cell Biology & Neurosciences	1	\$74,698	5	\$776,827	5	\$749,684
Developmental Biology & Anatomy	2	\$637,875	16	\$2,595,907	18	\$2,479,255
Family & Preventive Medicine	0	\$0	9	\$1,397,436	7	\$871,363
Health & Safety	0	\$0	0	\$0	1	\$10,000
Internal Medicine	3	\$176,806	18	\$887,597	6	\$907,244
Medicine Library	0	\$0	1	\$3,801	1	\$4,850
Microbiology & Immunology	2	\$615,173	10	\$2,289,964	6	\$1,142,012
Neuropsychiatry	0	\$0	12	\$1,106,008	9	\$1,328,220
Obstetrics & Gynecology	0	\$0	1	\$59,000	3	\$203,043
Ophthalmology	0	\$0	1	\$35,000	1	\$159,576
Pathology	1	\$5,646	12	\$1,588,225	9	\$1,416,259
Pediatrics/Center for Developmental Disabilities	1	\$49,980	23	\$2,846,545	16	\$1,848,338
Pharmacology & Physiology	2	\$353,000	22	\$1,867,198	18	\$1,635,406
Radiology	2	\$454,805	2	\$454,805	1	\$400,313
Research & Special Projects	0	\$0	9	\$210,375	2	\$124,350
School of Medicine - Dean's Office	0	\$0	1	\$27,493	0	\$0
School of Medicine Graduate Program	0	\$0	1	\$17,680	2	\$17,680
South Carolina Cancer Center	0	\$0	3	\$105,968	2	\$11,711
Surgery	0	\$0	8	\$837,423	4	\$257,316
<b>Total :</b>	<b>14</b>	<b>\$2,367,983</b>	<b>174</b>	<b>\$22,701,110</b>	<b>122</b>	<b>\$15,634,595</b>
<b>School of Music</b>	0	\$0	2	\$175,540	1	\$41,564
<b>Total :</b>	<b>0</b>	<b>\$0</b>	<b>2</b>	<b>\$175,540</b>	<b>1</b>	<b>\$41,564</b>
<b>School of the Environment</b>						
Earth Sciences & Resources Institute	1	\$33,578	12	\$2,326,007	10	\$4,084,601
School of the Environment	1	\$112,833	24	\$2,868,068	16	\$2,341,467
<b>Total :</b>	<b>2</b>	<b>\$146,411</b>	<b>36</b>	<b>\$5,194,075</b>	<b>26</b>	<b>\$6,426,068</b>
<b>South Carolina Honors College</b>	0	\$0	2	\$79,482	4	\$155,939
<b>Total :</b>	<b>0</b>	<b>\$0</b>	<b>2</b>	<b>\$79,482</b>	<b>4</b>	<b>\$155,939</b>
<b>University Libraries</b>						
Libraries & Collections	0	\$0	0	\$0	2	\$7,350
Thomas Cooper Library	0	\$0	1	\$90,000	4	\$1,173,636
<b>Total :</b>	<b>0</b>	<b>\$0</b>	<b>1</b>	<b>\$90,000</b>	<b>6</b>	<b>\$1,180,986</b>
<b>University Press</b>	0	\$0	0	\$0	1	\$10,000
<b>Total :</b>	<b>0</b>	<b>\$0</b>	<b>0</b>	<b>\$0</b>	<b>1</b>	<b>\$10,000</b>
<b>Vice President for Research</b>						
EPSCoR	0	\$0	0	\$0	3	\$732,658
NanoCenter	1	\$40,000	30	\$8,643,767	0	\$0
Sponsored Programs & Research	1	\$100,000	2	\$160,000	0	\$0
Technology Incubator	0	\$0	1	\$12,000	0	\$0
Vice President for Research - General	0	\$0	1	\$1,999,484	1	\$2,000,000

DEPARTMENT	CURRENT MONTH MAY - 2002		YEAR TO DATE FY 2002		YEAR TO DATE FY 2001	
<b>Total :</b>	<b>2</b>	<b>\$140,000</b>	<b>34</b>	<b>\$10,815,251</b>	<b>4</b>	<b>\$2,732,658</b>
<b>Report TOTAL :</b>	<b>136</b>	<b>\$18,926,321</b>	<b>1376</b>	<b>\$158,338,777</b>	<b>1392</b>	<b>\$167,590,115</b>

\* - Biochemistry represents faculty with a dual appointment to the Department of Chemistry and the School of Medicine. The figures are included in both division totals but only once in the overall total.