

MEMORANDUM

TO: Thomas Coggins
Interim Director

FROM: R. Steven Etheredge
Associate Director

DATE: April 9, 2001

RE: Report of Sponsored Program Activity for March 2001

The University received awards totaling \$8.71 million during the month, an 8% increase compared to last March (\$8.1 million). Total funding for the year-to-date is \$88.2 million, a 2% increase over the same period last fiscal year.

Faculty submitted 117 proposals requesting \$14.9 million compared to 126 and \$20.3 million last February. Thus far in the fiscal year, SPAR has processed 1132 proposals requesting \$138.6 million, compared to last year's totals of 1246 and \$152.7 million.

cc: K. McCoy

Sponsored Programs and Research Monthly Report

SUMMARY OF AWARDS MARCH - 2001

By Purpose

Research Awards-SPAR	\$4,648,315
Research Awards-SCRI	\$351,906
Training Awards	\$673,182
Service Awards	\$2,416,578
Equipment Awards	\$588,375
Graduate Assistantship Awards	\$31,002
TOTAL:	\$8,709,358

By Source

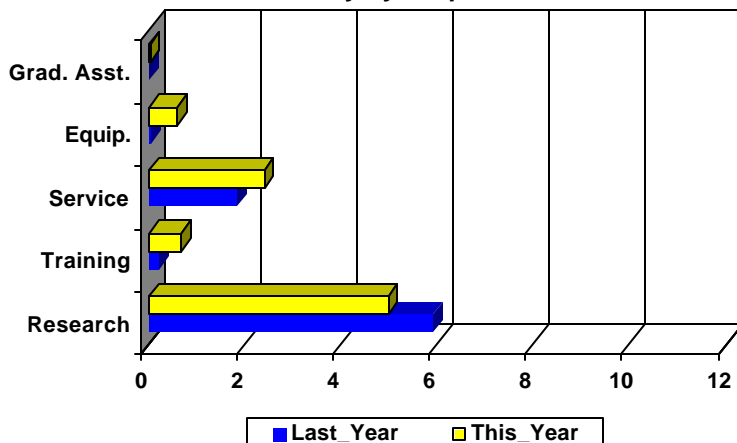
Federal Awards-SPAR	\$6,857,924
Federal Awards-SCRI	\$41,914
Private Awards-SPAR	\$929,324
Private Awards-SCRI	\$309,992
State Awards	\$570,204
TOTAL:	\$8,709,358

COMPARISON OF AMOUNT RECEIVED

MARCH - 2001 vs. MARCH - 2000

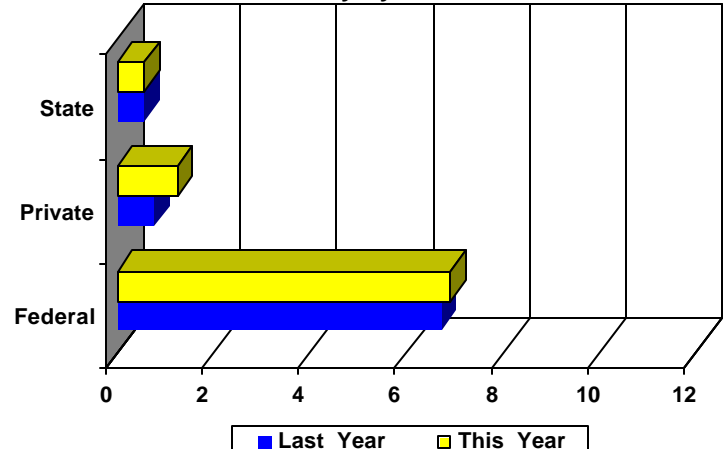
Amounts Received
(In millions of dollars)

Summary by Purpose



Amounts Received
(In millions of dollars)

Summary by Source



AWARDS BY DEPARTMENT

DEPARTMENT	CURRENT MONTH MARCH - 2001		YEAR TO DATE FY 2001		YEAR TO DATE FY 2000	
Business and Finance						
Campus Services	0	\$0	2	\$12,000	1	\$10,000
Total :	0	\$0	2	\$12,000	1	\$10,000
College of Criminal Justice						
	0	\$0	6	\$308,428	8	\$227,886
Total :	0	\$0	6	\$308,428	8	\$227,886
College of Education						
Education	0	\$0	2	\$16,054	3	\$18,176
Education Leadership & Policies	0	\$0	12	\$498,535	12	\$313,923
Educational Psychology	0	\$0	6	\$335,812	6	\$81,355
Instruction & Teacher Education	6	\$1,031,308	16	\$2,307,746	13	\$1,934,856
Office of Research	0	\$0	1	\$14,295	2	\$23,395
Physical Education	0	\$0	1	\$122,200	3	\$37,250
SC Educational Policy Center	0	\$0	3	\$192,816	1	\$100,000
School Improvement Council Assistance	1	\$128,805	1	\$128,805	1	\$87,500
USC Children's Center	1	\$2,000	1	\$2,000	1	\$5,000
Total :	8	\$1,162,113	43	\$3,618,263	42	\$2,601,455
College of Engineering & Information						
Chemical Engineering	6	\$786,839	35	\$2,848,076	31	\$2,757,496
Civil & Environmental Engineering	4	\$70,000	17	\$1,730,990	20	\$1,444,206
Computer Science & Engineering	2	\$36,760	25	\$355,834	0	\$0
Electrical Engineering	0	\$0	13	\$12,355,984	18	\$6,380,871
Engineering & Information Technology, College of	0	\$0	3	\$273,862	5	\$2,870,011
IMS - Engineering	0	\$0	0	\$0	1	\$102,709
Mechanical Engineering	3	\$821,298	28	\$2,731,940	23	\$940,672
SCAMP	0	\$0	4	\$902,200	3	\$742,147
Total :	15	\$1,714,897	125	\$21,198,886	101	\$15,238,112
College of Hospitality, Retail & Sports						
Hospitality, Retail & Sports Mgmt - Dean's Office	0	\$0	2	\$64,500	2	\$40,800
Hotel, Restaurant & Tourism Administration	0	\$0	0	\$0	4	\$45,577
Sport Administration	0	\$0	1	\$13,000	0	\$0
Total :	0	\$0	3	\$77,500	6	\$86,377
College of Journalism & Mass						
	1	\$41,040	19	\$455,145	23	\$289,657
Total :	1	\$41,040	19	\$455,145	23	\$289,657
College of Liberal Arts						
Anthropology	0	\$0	1	\$9,657	1	\$2,520
Archaeology & Anthropology, Institute of	2	\$675,262	10	\$1,192,113	11	\$1,810,361
Art	0	\$0	1	\$2,500	3	\$6,168
English	0	\$0	3	\$13,485	0	\$0
French & Classics	0	\$0	0	\$0	1	\$9,590
Geography	1	\$8,788	18	\$906,714	17	\$726,614
Government & International Studies	0	\$0	9	\$62,778	14	\$101,253
History	1	\$1,000	22	\$115,915	17	\$88,489

DEPARTMENT	CURRENT MONTH MARCH - 2001		YEAR TO DATE FY 2001		YEAR TO DATE FY 2000	
Institute for Southern Studies	1	\$170,235	3	\$270,235	0	\$0
International Studies, Institute of	0	\$0	2	\$128,997	0	\$0
Liberal Arts Dean's Office	0	\$0	0	\$0	2	\$41,159
McKissick Museum	1	\$7,500	4	\$75,359	3	\$114,420
Naval Science	0	\$0	4	\$6,100	2	\$4,000
Philosophy	0	\$0	2	\$36,900	2	\$43,800
Psychology	3	\$279,380	31	\$1,735,391	32	\$3,319,419
Religious Studies	1	\$35,000	1	\$35,000	1	\$100,000
Sociology	3	\$51,297	5	\$220,273	8	\$272,007
Theatre, Speech & Dance	1	\$6,170	1	\$6,170	0	\$0
Trio Programs	0	\$0	5	\$1,146,226	3	\$797,593
Total :	14	\$1,234,632	122	\$5,963,813	117	\$7,437,393
College of Library & Information Science	1	\$5,687	4	\$41,028	7	\$52,435
Total :	1	\$5,687	4	\$41,028	7	\$52,435
College of Nursing						
Academic & Student Affairs	0	\$0	8	\$755,598	14	\$872,718
Administrative & Clinical Nursing	1	\$144,500	4	\$241,644	2	\$337,358
Family & Community Health Nursing	0	\$0	5	\$241,841	7	\$126,270
Total :	1	\$144,500	17	\$1,239,083	23	\$1,336,346
College of Pharmacy						
Basic Pharmaceutical Sciences	1	\$36,911	7	\$280,754	13	\$790,307
Clinical Pharmacy	0	\$0	4	\$100,000	7	\$147,020
Palmetto Poison Center	0	\$0	2	\$45,000	0	\$0
Pharmacy Practice	1	\$44,469	10	\$282,666	8	\$215,262
Total :	2	\$81,380	23	\$708,420	28	\$1,152,589
College of Science and Math						
Baruch Institute	1	\$59,924	20	\$1,549,641	16	\$957,626
Biological Sciences	5	\$304,088	36	\$2,550,319	39	\$3,568,599
Center For Science Education	0	\$0	3	\$104,695	1	\$7,500
Chemistry & Biochemistry	7	\$828,035	52	\$4,099,605	45	\$3,775,452
Computer Science	0	\$0	1	\$19,266	8	\$148,622
EPSCoR	0	\$0	7	\$211,885	29	\$1,492,496
Geological Sciences	1	\$91,973	26	\$1,401,037	36	\$2,494,379
Mathematics	0	\$0	10	\$580,365	5	\$711,003
Physics & Astronomy	2	\$19,557	15	\$1,409,105	15	\$1,476,902
Science & Math Administration	0	\$0	7	\$904,500	0	\$0
Statistics	0	\$0	14	\$521,131	11	\$361,358
Total :	16	\$1,303,577	191	\$13,351,549	205	\$14,993,937
College of Social Work	3	\$29,126	47	\$5,795,459	60	\$6,152,738
Total :	3	\$29,126	47	\$5,795,459	60	\$6,152,738
Darla Moore School of Business						
Business Administration - Division Of Research	3	\$3,555	50	\$781,760	40	\$916,171
Small Business Development Center	4	\$8,486	12	\$782,980	10	\$1,379,809
Total :	7	\$12,041	62	\$1,564,740	50	\$2,295,980

DEPARTMENT	CURRENT MONTH MARCH - 2001		YEAR TO DATE FY 2001		YEAR TO DATE FY 2000	
Division of Student Affairs						
International Programs for Students	0	\$0	1	\$3,000	1	\$2,125
Student Health	0	\$0	0	\$0	2	\$282,110
Student Life	0	\$0	2	\$211,571	1	\$29,946
Total :	0	\$0	3	\$214,571	4	\$314,181
Earth Sciences & Resources Institute	0	\$0	5	\$848,655	14	\$361,235
Total :	0	\$0	5	\$848,655	14	\$361,235
English Program for Internationals						
English Program For Internationals	1	\$272,096	1	\$272,096	0	\$0
Total :	1	\$272,096	1	\$272,096	0	\$0
Institute for Families in Society						
Families in Society, Institute for	1	\$5,003	22	\$2,245,289	22	\$2,292,040
Total :	1	\$5,003	22	\$2,245,289	22	\$2,292,040
Institute of Public Affairs	7	\$253,655	29	\$1,004,720	31	\$1,673,213
Total :	7	\$253,655	29	\$1,004,720	31	\$1,673,213
Institutional Planning						
Instructional Services Center	0	\$0	0	\$0	1	\$26,518
Total :	0	\$0	0	\$0	1	\$26,518
Law School						
Law School	0	\$0	11	\$1,188,878	8	\$1,250,129
Total :	0	\$0	11	\$1,188,878	8	\$1,250,129
Norman J. Arnold School of Public Health						
Communication Sciences & Disorders	0	\$0	1	\$25,000	2	\$138,710
Environmental Health Sciences	1	\$68,315	28	\$1,530,629	24	\$2,112,245
Epidemiology & Biostatistics	0	\$0	24	\$2,323,074	25	\$2,292,009
Exercise Science	0	\$0	12	\$1,122,028	14	\$928,756
Health Administration	0	\$0	34	\$675,169	49	\$292,661
Health Promotion & Education	0	\$0	37	\$1,418,985	40	\$874,466
Norman J. Arnold School of Public Health - Dean	0	\$0	2	\$492,197	12	\$1,181,001
Prevention Research Center	3	\$172,772	21	\$2,424,087	32	\$3,575,231
Total :	4	\$241,087	159	\$10,011,169	198	\$11,395,079
Regional and Four-Year Campuses						
Regional Campuses & Continuing Education	0	\$0	1	\$32,100	0	\$0
USC Aiken	1	\$39,003	18	\$1,225,589	17	\$1,045,056
USC Beaufort	1	\$63,000	9	\$492,987	7	\$304,129
USC Lancaster	0	\$0	5	\$435,432	3	\$303,681
USC Salkehatchie	0	\$0	2	\$228,182	1	\$194,688
USC Spartanburg	5	\$235,189	41	\$1,569,106	54	\$1,538,867
USC Sumter	0	\$0	6	\$401,732	2	\$195,240

DEPARTMENT	CURRENT MONTH MARCH - 2001		YEAR TO DATE FY 2001		YEAR TO DATE FY 2000	
USC Union	0	\$0	1	\$198,582	1	\$194,688
Total :	7	\$337,192	83	\$4,583,710	85	\$3,776,349
School of Medicine						
Biochemistry *	2	\$283,914	16	\$1,346,405	16	\$1,169,095
Cell Biology & Neurosciences	0	\$0	5	\$678,090	5	\$275,174
Computer and Communications Resources	0	\$0	0	\$0	1	\$30,000
Developmental Biology & Anatomy	1	\$80,734	6	\$603,406	7	\$806,686
Family & Preventive Medicine	0	\$0	5	\$849,326	10	\$663,766
Health & Safety	0	\$0	1	\$10,000	1	\$4,800
Internal Medicine	2	\$1,522,859	28	\$1,918,135	33	\$2,520,666
Microbiology & Immunology	0	\$0	4	\$661,861	2	\$321,005
Neuropsychiatry	2	\$67,375	8	\$337,765	21	\$499,401
Obstetrics & Gynecology	0	\$0	2	\$70,525	3	\$126,734
Orthopaedic Surgery	0	\$0	2	\$7,250	1	\$3,500
Pathology	0	\$0	3	\$194,750	4	\$292,343
Pediatrics/Center for Developmental Disabilities	2	\$185,046	26	\$2,994,297	21	\$4,210,712
Pharmacology & Physiology	0	\$0	7	\$198,221	4	\$163,875
Radiology	0	\$0	1	\$400,313	1	\$481,407
Research & Special Projects	0	\$0	4	\$435,802	11	\$683,555
School of Medicine - Dean's Office	0	\$0	0	\$0	1	\$2,000
School of Medicine Graduate Program	0	\$0	1	\$17,680	0	\$0
South Carolina Cancer Center	0	\$0	2	\$11,711	0	\$0
Surgery	1	\$7,500	1	\$7,500	1	\$7,692
Total :	10	\$2,147,428	122	\$10,743,037	143	\$12,262,411
School of Music						
	0	\$0	0	\$0	2	\$99,400
Total :	0	\$0	0	\$0	2	\$99,400
School of the Environment						
	0	\$0	4	\$150,450	3	\$788,946
Total :	0	\$0	4	\$150,450	3	\$788,946
South Carolina Honors College						
	0	\$0	0	\$0	1	\$15,000
Total :	0	\$0	0	\$0	1	\$15,000
University Libraries						
Thomas Cooper Library	0	\$0	2	\$260,297	4	\$57,237
Total :	0	\$0	2	\$260,297	4	\$57,237
University Press						
	0	\$0	0	\$0	1	\$3,000
Total :	0	\$0	0	\$0	1	\$3,000
Vice President for Research						
EPSCoR	1	\$7,818	25	\$1,395,382	0	\$0
Sponsored Programs & Research	0	\$0	1	\$20,000	0	\$0
Vice President for Research	0	\$0	2	\$2,300,000	5	\$1,800,000
Total :	1	\$7,818	28	\$3,715,382	5	\$1,800,000

DEPARTMENT	CURRENT MONTH MARCH - 2001		YEAR TO DATE FY 2001		YEAR TO DATE FY 2000	
Report TOTAL :	97	\$8,709,358	1117	\$88,226,163	1177	\$86,820,548

* - Biochemistry represents faculty with a dual appointment to the Department of Chemistry and the School of Medicine. The figures are included in both division totals but only once in the overall total.

Funding Agency Comparison Report

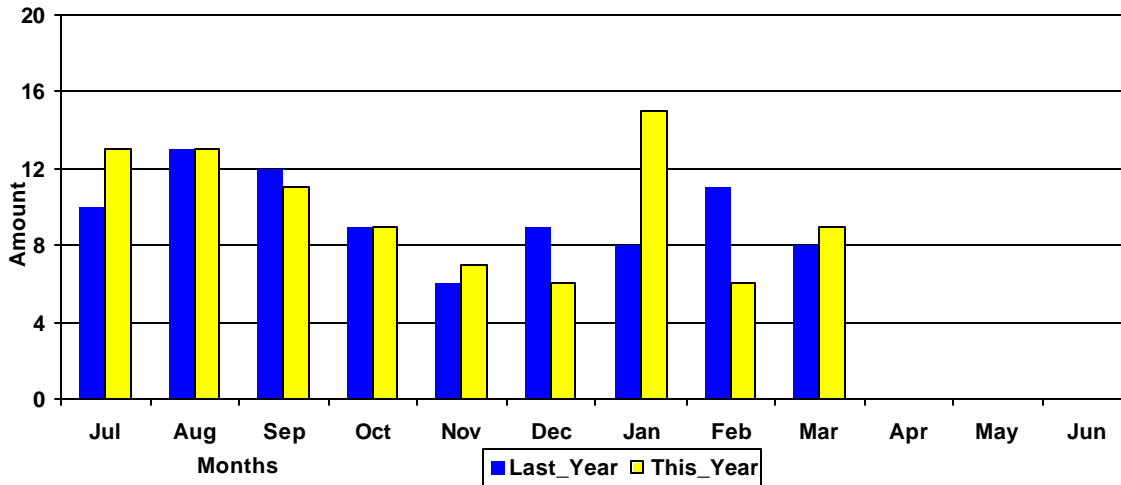
Year-To-Date -MARCH - 2001

FISCAL YEAR - 2001

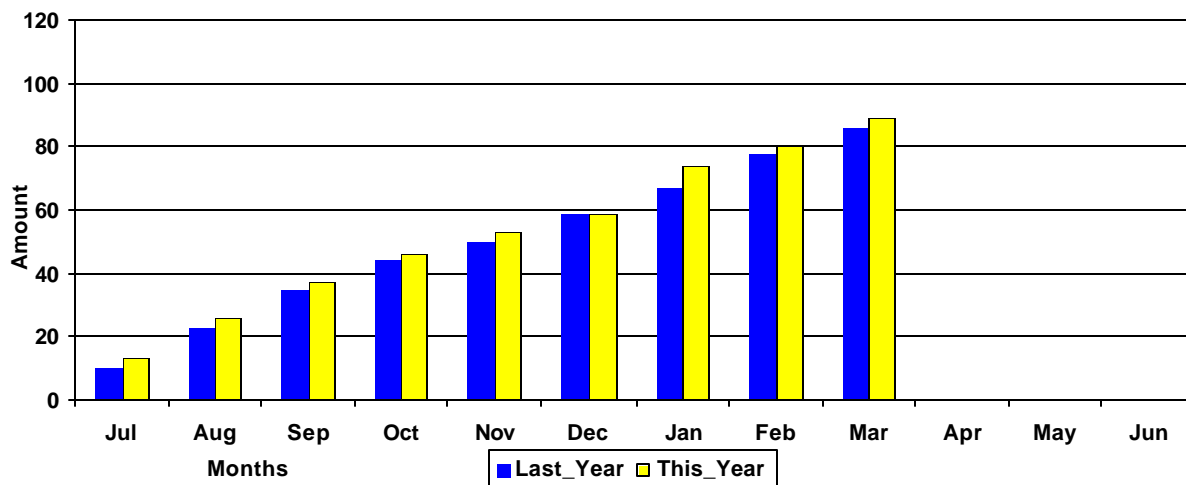
FISCAL YEAR - 2000

NSF Awards	84	\$5,934,952	82	\$6,772,545
NIH Awards	75	\$7,793,971	78	\$10,150,094
Dept. Of Defense Awards	56	\$16,365,950	41	\$9,400,524
Dept. Of Education Awards	62	\$8,337,439	38	\$6,040,740
Dept. Of Energy Awards	42	\$3,955,616	30	\$4,435,875
SCUREF Awards from DOE	9	\$1,102,600	11	\$913,039
State and Municipalities Awards	195	\$10,868,483	237	\$13,439,878

Amounts Awarded
(In millions of dollars)



Cumulative Amounts Awarded
(In millions of dollars)



PROPOSALS BY DEPARTMENT

DEPARTMENT	CURRENT MONTH MARCH - 2001		YEAR TO DATE FY 2001		YEAR TO DATE FY 2000	
Business and Finance						
Campus Services	1	\$9,970	2	\$11,970	1	\$10,000
Total :	1	\$9,970	2	\$11,970	1	\$10,000
College of Criminal Justice						
	2	\$90,728	8	\$411,951	7	\$314,041
Total :	2	\$90,728	8	\$411,951	7	\$314,041
College of Education						
Education	1	\$27,500	1	\$27,500	2	\$390,460
Education Leadership & Policies	0	\$0	9	\$155,789	8	\$479,526
Educational Psychology	2	\$53,383	11	\$883,341	12	\$1,260,873
Instruction & Teacher Education	0	\$0	14	\$3,332,174	10	\$3,520,403
Office of Research	0	\$0	0	\$0	1	\$17,888
Physical Education	0	\$0	2	\$142,200	4	\$190,500
SC Educational Policy Center	0	\$0	2	\$92,816	0	\$0
School Improvement Council Assistance	0	\$0	0	\$0	2	\$91,900
USC Children's Center	0	\$0	2	\$32,000	0	\$0
Total :	3	\$80,883	41	\$4,665,820	39	\$5,951,550
College of Engineering & Information						
Chemical Engineering	10	\$2,431,899	43	\$9,273,858	48	\$7,100,990
Civil & Environmental Engineering	1	\$55,924	15	\$1,023,492	31	\$2,617,327
Computer Science & Engineering	0	\$0	30	\$1,786,290	0	\$0
Electrical Engineering	0	\$0	9	\$6,357,402	31	\$23,752,817
Engineering & Information Technology, College of	0	\$0	2	\$225,000	3	\$2,648,976
IMS - Engineering	0	\$0	0	\$0	3	\$1,046,653
Mechanical Engineering	4	\$261,479	39	\$4,345,959	59	\$5,471,186
SCAMP	0	\$0	2	\$812,000	2	\$610,000
Total :	15	\$2,749,302	140	\$23,824,001	177	\$43,247,949
College of Hospitality, Retail & Sports						
Center For Retailing Studies	0	\$0	0	\$0	2	\$246,818
Hospitality, Retail & Sports Mgmt - Dean's Office	0	\$0	1	\$25,000	2	\$62,300
Hotel, Restaurant & Tourism Administration	0	\$0	1	\$9,600	4	\$71,402
Sport Administration	0	\$0	1	\$13,000	0	\$0
Total :	0	\$0	3	\$47,600	8	\$380,520
College of Journalism & Mass						
	1	\$41,040	18	\$535,802	22	\$500,346
Total :	1	\$41,040	18	\$535,802	22	\$500,346
College of Liberal Arts						
Anthropology	0	\$0	1	\$72,250	1	\$2,520
Archaeology & Anthropology, Institute of	0	\$0	8	\$1,256,894	15	\$1,843,122
Art	0	\$0	2	\$151,916	4	\$823,408
English	1	\$25,345	5	\$80,095	2	\$178,790
French & Classics	0	\$0	0	\$0	1	\$9,989
Geography	3	\$202,161	11	\$592,848	10	\$787,333
Government & International Studies	0	\$0	7	\$208,167	12	\$151,738

DEPARTMENT	CURRENT MONTH MARCH - 2001		YEAR TO DATE FY 2001		YEAR TO DATE FY 2000	
History	0	\$0	15	\$218,933	15	\$251,085
Institute for Southern Studies	0	\$0	1	\$262,040	1	\$49,061
International Studies, Institute of	0	\$0	1	\$37,946	1	\$130,795
Linguistics Program	0	\$0	2	\$41,892	0	\$0
McKissick Museum	2	\$15,000	5	\$127,255	5	\$73,727
Philosophy	0	\$0	2	\$19,829	3	\$296,762
Psychology	3	\$69,863	35	\$8,375,058	30	\$5,581,542
Religious Studies	0	\$0	1	\$35,000	0	\$0
Sociology	0	\$0	7	\$242,003	5	\$242,354
Spanish, Italian, & Portuguese	0	\$0	1	\$49,941	0	\$0
Theatre, Speech & Dance	1	\$6,170	1	\$6,170	0	\$0
Trio Programs	0	\$0	2	\$367,697	4	\$1,305,191
Total :	10	\$318,539	107	\$12,145,934	109	\$11,727,417
College of Library & Information Science	1	\$5,687	6	\$141,136	7	\$167,811
Total :	1	\$5,687	6	\$141,136	7	\$167,811
College of Nursing						
Academic & Student Affairs	1	\$295,857	6	\$479,600	2	\$304,578
Administrative & Clinical Nursing	0	\$0	5	\$163,000	2	\$323,474
Family & Community Health Nursing	3	\$65,695	5	\$2,484,555	6	\$1,106,109
Total :	4	\$361,552	16	\$3,127,155	10	\$1,734,161
College of Pharmacy						
Basic Pharmaceutical Sciences	2	\$275,985	18	\$1,948,103	10	\$1,709,622
Clinical Pharmacy	0	\$0	4	\$136,428	3	\$118,000
Palmetto Poison Center	0	\$0	2	\$133,957	0	\$0
Pharmacy Practice	0	\$0	9	\$341,440	4	\$114,680
Total :	2	\$275,985	33	\$2,559,928	17	\$1,942,302
College of Science and Math						
Baruch Institute	3	\$442,281	25	\$1,648,025	35	\$3,979,715
Biological Sciences	7	\$610,951	64	\$7,274,616	82	\$7,084,271
Center For Science Education	1	\$2,000	4	\$132,986	2	\$32,423
Chemistry & Biochemistry	6	\$793,841	67	\$12,197,934	59	\$13,554,895
Computer Science	0	\$0	0	\$0	10	\$390,949
EPSCoR	0	\$0	1	\$40,000	14	\$2,629,341
Geological Sciences	4	\$1,842,097	42	\$5,461,419	42	\$3,796,732
Mathematics	0	\$0	13	\$766,827	15	\$1,088,458
Physics & Astronomy	0	\$0	25	\$8,283,578	23	\$7,434,458
Science & Math Administration	0	\$0	8	\$1,574,415	0	\$0
Statistics	2	\$71,219	12	\$503,531	16	\$357,573
Total :	23	\$3,762,389	261	\$37,883,331	298	\$40,348,815
College of Social Work	6	\$688,886	50	\$7,323,531	44	\$1,584,462
Total :	6	\$688,886	50	\$7,323,531	44	\$1,584,462
Darla Moore School of Business						
Business Administration - Division Of Research	0	\$0	45	\$752,474	30	\$344,194
Small Business Development Center	0	\$0	3	\$2,386,650	4	\$1,190,921
Total :	0	\$0	48	\$3,139,124	34	\$1,535,115

DEPARTMENT	CURRENT MONTH MARCH - 2001		YEAR TO DATE FY 2001		YEAR TO DATE FY 2000	
Division of Student Affairs						
International Programs for Students	0	\$0	0	\$0	1	\$4,250
Student Health	2	\$161,409	2	\$161,409	4	\$501,450
Student Life	0	\$0	2	\$153,362	0	\$0
Total :	2	\$161,409	4	\$314,771	5	\$505,700
Earth Sciences & Resources Institute	0	\$0	5	\$3,410,803	20	\$840,372
Total :	0	\$0	5	\$3,410,803	20	\$840,372
English Program for Internationals						
English Program For Internationals	0	\$0	1	\$232,149	0	\$0
Total :	0	\$0	1	\$232,149	0	\$0
Equal Opportunity Programs	0	\$0	0	\$0	1	\$20,000
Total :	0	\$0	0	\$0	1	\$20,000
Institute for Families in Society						
Families in Society, Institute for	6	\$1,033,441	17	\$2,413,189	20	\$1,952,755
Total :	6	\$1,033,441	17	\$2,413,189	20	\$1,952,755
Institute of Public Affairs	2	\$132,453	35	\$2,166,086	43	\$2,866,804
Total :	2	\$132,453	35	\$2,166,086	43	\$2,866,804
Institutional Planning						
Law Enforcement & Safety	0	\$0	2	\$67,528	1	\$253,597
Total :	0	\$0	2	\$67,528	1	\$253,597
Law School						
Law School	0	\$0	11	\$1,332,522	8	\$930,091
Total :	0	\$0	11	\$1,332,522	8	\$930,091
Norman J. Arnold School of Public Health						
Communication Sciences & Disorders	0	\$0	1	\$199,011	8	\$536,566
Environmental Health Sciences	3	\$735,913	19	\$1,685,011	22	\$2,999,932
Epidemiology & Biostatistics	4	\$453,386	30	\$5,139,500	25	\$2,698,363
Exercise Science	0	\$0	16	\$1,130,198	18	\$1,489,790
Health Administration	2	\$39,739	34	\$227,204	52	\$392,590
Health Promotion & Education	3	\$968,286	31	\$1,666,312	41	\$759,789
Norman J. Arnold School of Public Health - Dean	0	\$0	2	\$1,338,100	11	\$2,031,615
Prevention Research Center	2	\$29,000	10	\$875,039	12	\$2,366,412
Total :	14	\$2,226,324	143	\$12,260,375	189	\$13,275,056
Regional and Four-Year Campuses						
USC Aiken	4	\$911,445	18	\$1,545,314	18	\$1,253,432
USC Beaufort	1	\$349,985	11	\$886,182	12	\$405,068
USC Lancaster	0	\$0	3	\$370,165	1	\$11,993

DEPARTMENT	CURRENT MONTH MARCH - 2001		YEAR TO DATE FY 2001		YEAR TO DATE FY 2000	
USC Salkehatchie	0	\$0	6	\$480,668	5	\$521,134
USC Spartanburg	10	\$358,716	26	\$1,348,997	38	\$1,074,337
USC Sumter	0	\$0	6	\$962,900	3	\$393,824
USC Union	0	\$0	1	\$299,376	1	\$215,232
Total :	15	\$1,620,146	71	\$5,893,602	78	\$3,875,020
School of Medicine						
Animal Resources Facility	0	\$0	1	\$128,159	0	\$0
Biochemistry *	1	\$296,000	6	\$1,449,637	10	\$1,853,119
Cell Biology & Neurosciences	0	\$0	3	\$398,502	2	\$432,216
Developmental Biology & Anatomy	1	\$265,980	18	\$2,479,255	17	\$1,950,455
Family & Preventive Medicine	0	\$0	6	\$593,692	8	\$1,602,834
Health & Safety	1	\$10,000	1	\$10,000	1	\$6,700
Internal Medicine	1	\$78,730	6	\$907,244	8	\$423,273
Microbiology & Immunology	1	\$215,162	4	\$764,137	7	\$1,353,010
Neuropsychiatry	2	\$47,849	7	\$859,340	7	\$323,256
Obstetrics & Gynecology	0	\$0	1	\$59,000	2	\$125,234
Orthopaedic Surgery	0	\$0	0	\$0	1	\$12,500
Pathology	1	\$291,170	8	\$1,367,259	9	\$930,680
Pediatrics/Center for Developmental Disabilities	1	\$326,100	12	\$886,096	14	\$2,837,412
Pharmacology & Physiology	1	\$29,832	15	\$1,312,956	10	\$778,800
Radiology	0	\$0	1	\$400,313	0	\$0
Research & Special Projects	0	\$0	0	\$0	2	\$261,403
School of Medicine Graduate Program	0	\$0	2	\$17,680	0	\$0
South Carolina Cancer Center	0	\$0	2	\$11,711	0	\$0
Surgery	0	\$0	3	\$196,640	3	\$209,150
Total :	10	\$1,560,823	96	\$11,841,621	101	\$13,100,042
School of Music						
	0	\$0	0	\$0	2	\$560,765
Total :	0	\$0	0	\$0	2	\$560,765
School of the Environment						
	1	\$74,729	8	\$1,742,752	5	\$3,176,918
Total :	1	\$74,729	8	\$1,742,752	5	\$3,176,918
South Carolina Honors College						
	0	\$0	4	\$155,939	6	\$150,932
Total :	0	\$0	4	\$155,939	6	\$150,932
University Libraries						
Libraries & Collections	0	\$0	2	\$7,350	0	\$0
Thomas Cooper Library	0	\$0	2	\$167,898	2	\$176,391
Total :	0	\$0	4	\$175,248	2	\$176,391
University Press						
	0	\$0	1	\$10,000	0	\$0
Total :	0	\$0	1	\$10,000	0	\$0
Vice President for Research						
EPSCoR	0	\$0	2	\$232,658	0	\$0
Vice President for Research - General	0	\$0	1	\$2,000,000	1	\$1,800,000
Total :	0	\$0	3	\$2,232,658	1	\$1,800,000

DEPARTMENT	CURRENT MONTH MARCH - 2001		YEAR TO DATE FY 2001		YEAR TO DATE FY 2000	
Report TOTAL :	117	\$14,898,286	1132	\$138,616,886	1245	\$151,075,812

* - Biochemistry represents faculty with a dual appointment to the Department of Chemistry and the School of Medicine. The figures are included in both division totals but only once in the overall total.