

MEMORANDUM

TO: Anthony M. Boccanfuso, Ph.D.
Director

FROM: R. Steven Etheredge
Associate Director

DATE: July 20, 2001

RE: Report of Sponsored Program Activity for June 2001

The University received awards totaling \$14.1 million during the month, a decrease of 40% compared to last June (\$23.3 million). Total funding for the year-to-date is \$122.8 million, a 1.2% increase over the last fiscal year.

During the month, faculty submitted 168 proposals requesting \$23 million compared to 177 and \$20.5 million last June. Thus for the fiscal year, SPAR processed 1559 proposals requesting \$190.9 million, compared to last year's totals of 1648 and \$206 million.

cc: K. McCoy

Sponsored Programs and Research Monthly Report

SUMMARY OF AWARDS JUNE - 2001

By Purpose

Research Awards - SPAR	\$7,387,519
Research Awards - SCRI	\$438,407
Training Awards	\$1,369,991
Service Awards	\$4,523,883
Equipment Awards	\$42,000
Graduate Assistantship Awards	\$291,505
TOTAL:	\$14,053,305

By Source

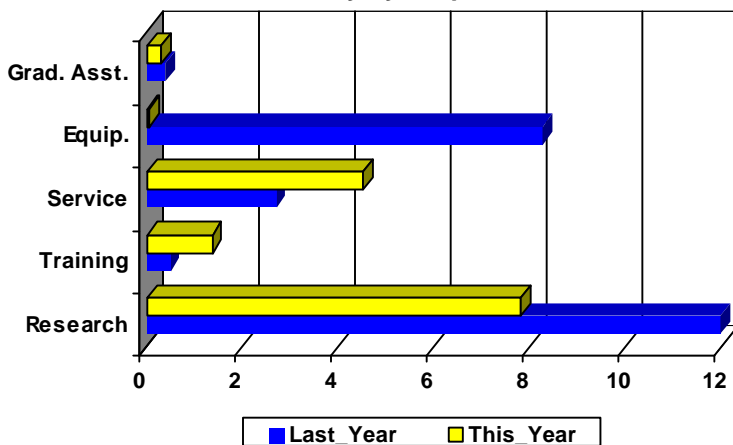
Federal Awards - SPAR	\$9,987,392
Federal Awards - SCRI	\$288,501
Private Awards - SPAR	\$876,563
Private Awards - SCRI	\$149,906
State Awards	\$2,750,943
TOTAL:	\$14,053,305

COMPARISON OF AMOUNT RECEIVED

JUNE - 2001 vs. JUNE - 2000

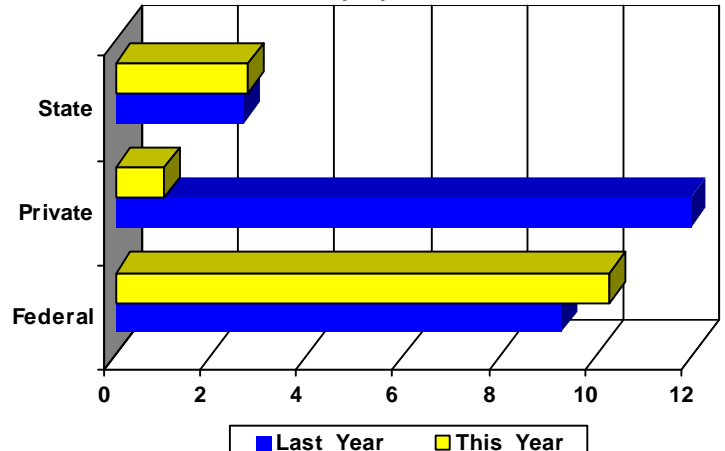
Amounts Received
(In millions of dollars)

Summary by Purpose



Amounts Received
(In millions of dollars)

Summary by Source



AWARDS BY DEPARTMENT

DEPARTMENT	CURRENT MONTH JUNE - 2001		YEAR TO DATE FY 2001		YEAR TO DATE FY 2000	
Business and Finance						
Campus Services	0	\$0	2	\$12,000	1	\$10,000
Facilities Planning/Energy Services	1	\$5,375	1	\$5,375	0	\$0
Total :	1	\$5,375	3	\$17,375	1	\$10,000
College of Criminal Justice						
	0	\$0	7	\$808,428	9	\$249,157
Total :	0	\$0	7	\$808,428	9	\$249,157
College of Education						
Education	1	\$50,000	3	\$66,054	4	\$52,296
Education Leadership & Policies	1	\$67,599	13	\$566,134	13	\$314,123
Educational Psychology	2	\$50,583	12	\$636,114	10	\$324,545
Instruction & Teacher Education	4	\$151,600	28	\$2,548,753	15	\$2,059,856
Office of Research	0	\$0	1	\$14,295	2	\$23,395
Physical Education	0	\$0	3	\$1,272,785	15	\$1,233,671
SC Educational Policy Center	1	\$100,000	5	\$392,816	1	\$100,000
School Improvement Council Assistance	2	\$73,000	3	\$201,805	3	\$112,500
USC Children's Center	0	\$0	1	\$2,000	1	\$5,000
Total :	11	\$492,782	69	\$5,700,756	64	\$4,225,386
College of Engineering & Information						
Chemical Engineering	3	\$294,875	44	\$3,303,352	42	\$4,326,073
Civil & Environmental Engineering	1	\$100,000	21	\$1,967,847	27	\$1,841,030
Computer Science & Engineering	2	\$357,920	32	\$1,035,670	0	\$0
Electrical Engineering	0	\$0	19	\$13,352,263	24	\$16,214,795
Engineering & Information Technology, College of	0	\$0	4	\$2,206,492	5	\$2,870,011
IMS - Engineering	0	\$0	0	\$0	2	\$1,102,709
Mechanical Engineering	4	\$23,517	38	\$3,879,484	35	\$1,666,291
SCAMP	1	\$397,800	5	\$1,300,000	5	\$1,352,147
Total :	11	\$1,174,112	163	\$27,045,108	140	\$29,373,056
College of Hospitality, Retail & Sports						
Center For Retailing Studies	1	\$20,816	1	\$20,816	0	\$0
Hospitality, Retail & Sports Mgmt - Dean's Office	0	\$0	4	\$90,500	4	\$67,700
Hotel, Restaurant & Tourism Administration	0	\$0	1	\$9,600	4	\$45,577
Sport Administration	0	\$0	1	\$13,000	0	\$0
Total :	1	\$20,816	7	\$133,916	8	\$113,277
College of Journalism & Mass						
	4	\$79,897	27	\$681,518	31	\$513,395
Total :	4	\$79,897	27	\$681,518	31	\$513,395
College of Liberal Arts						
African-American Studies Program	0	\$0	1	\$1,000	0	\$0
Anthropology	0	\$0	1	\$9,657	1	\$2,520
Archaeology & Anthropology, Institute of	2	\$66,601	16	\$1,412,328	15	\$1,867,600
Art	1	\$3,000	3	\$82,916	4	\$84,168
English	0	\$0	4	\$16,485	1	\$61,000
French & Classics	0	\$0	0	\$0	1	\$9,590

DEPARTMENT	CURRENT MONTH JUNE - 2001		YEAR TO DATE FY 2001		YEAR TO DATE FY 2000	
Geography	1	\$41,540	20	\$955,254	20	\$901,744
Government & International Studies	2	\$7,024	12	\$139,802	19	\$135,731
History	1	\$49,149	24	\$251,305	24	\$256,849
Institute for Southern Studies	0	\$0	4	\$392,111	0	\$0
International Studies, Institute of	0	\$0	2	\$128,997	0	\$0
Liberal Arts Dean's Office	0	\$0	0	\$0	2	\$41,159
McKissick Museum	0	\$0	4	\$75,359	4	\$169,420
Naval Science	0	\$0	4	\$6,100	2	\$4,000
Philosophy	0	\$0	5	\$50,309	3	\$45,000
Psychology	11	\$193,269	48	\$2,945,705	50	\$3,836,690
Religious Studies	0	\$0	1	\$35,000	1	\$100,000
Sociology	0	\$0	6	\$227,773	10	\$320,427
Theatre, Speech & Dance	0	\$0	1	\$6,170	0	\$0
Trio Programs	0	\$0	6	\$1,585,794	9	\$1,195,700
Total :	18	\$360,583	162	\$8,322,065	166	\$9,031,598
College of Library & Information Science	1	\$8,785	6	\$59,813	11	\$195,138
Total :	1	\$8,785	6	\$59,813	11	\$195,138
College of Nursing						
Academic & Student Affairs	1	\$2,898	13	\$814,942	19	\$1,101,811
Administrative & Clinical Nursing	0	\$0	5	\$386,144	2	\$337,358
Family & Community Health Nursing	0	\$0	6	\$325,100	7	\$126,270
Total :	1	\$2,898	24	\$1,526,186	28	\$1,565,439
College of Pharmacy						
Basic Pharmaceutical Sciences	1	\$2,250	10	\$743,554	14	\$799,059
Clinical Pharmacy	0	\$0	4	\$100,000	8	\$156,020
Palmetto Poison Center	0	\$0	2	\$45,000	0	\$0
Pharmacy Practice	0	\$0	11	\$297,666	10	\$269,942
Total :	1	\$2,250	27	\$1,186,220	32	\$1,225,021
College of Science and Math						
Baruch Institute	8	\$27,912	32	\$1,671,671	29	\$1,475,608
Biological Sciences	6	\$276,581	53	\$3,344,303	59	\$4,662,298
Center For Science Education	0	\$0	3	\$104,695	1	\$7,500
Chemistry & Biochemistry	7	\$2,550,869	68	\$7,120,697	63	\$5,672,183
Computer Science	0	\$0	1	\$19,266	11	\$239,227
EPSCoR	0	\$0	5	\$211,885	37	\$2,217,307
Geological Sciences	11	\$272,645	41	\$1,792,980	51	\$4,715,021
Mathematics	0	\$0	12	\$646,971	8	\$782,862
Physics & Astronomy	6	\$796,005	29	\$3,643,604	35	\$3,408,727
Science & Math Administration	1	\$88,500	8	\$1,108,428	0	\$0
Statistics	0	\$0	19	\$581,872	15	\$380,274
Total :	39	\$4,012,512	271	\$20,246,372	309	\$23,561,007
College of Social Work	11	\$1,169,390	75	\$7,152,859	94	\$6,713,258
Total :	11	\$1,169,390	75	\$7,152,859	94	\$6,713,258
Computer Services	0	\$0	0	\$0	1	\$211,470
Total :	0	\$0	0	\$0	1	\$211,470

DEPARTMENT	CURRENT MONTH JUNE - 2001		YEAR TO DATE FY 2001		YEAR TO DATE FY 2000	
Darla Moore School of Business						
Business Administration - Division Of Research	4	\$17,210	60	\$862,908	49	\$936,324
Small Business Development Center	0	\$0	12	\$782,980	11	\$1,382,103
Total :	4	\$17,210	72	\$1,645,888	60	\$2,318,427
Division of Student Affairs						
International Programs for Students	0	\$0	1	\$3,000	1	\$2,125
Student Health	0	\$0	1	\$5,000	3	\$292,110
Student Life	0	\$0	2	\$211,571	1	\$29,946
Total :	0	\$0	4	\$219,571	5	\$324,181
Earth Sciences & Resources Institute	1	\$2,264	8	\$3,213,723	21	\$515,495
Total :	1	\$2,264	8	\$3,213,723	21	\$515,495
English Program for Internationals						
English Program For Internationals	0	\$0	1	\$272,096	0	\$0
Total :	0	\$0	1	\$272,096	0	\$0
Institute for Families in Society						
Families in Society, Institute for	2	\$331,310	24	\$2,576,599	28	\$2,438,269
Total :	2	\$331,310	24	\$2,576,599	28	\$2,438,269
Institute of Public Affairs	4	\$84,630	42	\$1,925,035	40	\$2,517,721
Total :	4	\$84,630	42	\$1,925,035	40	\$2,517,721
Institutional Planning						
Instructional Services Center	0	\$0	0	\$0	1	\$26,518
Total :	0	\$0	0	\$0	1	\$26,518
Law School						
Law School	1	\$71,196	15	\$1,495,137	10	\$1,312,129
Total :	1	\$71,196	15	\$1,495,137	10	\$1,312,129
Norman J. Arnold School of Public Health						
Center for Health Services and Policy Research	2	\$56,775	2	\$56,775	0	\$0
Communication Sciences & Disorders	0	\$0	1	\$25,000	4	\$299,928
Environmental Health Sciences	1	\$81,253	35	\$1,779,807	34	\$2,290,877
Epidemiology & Biostatistics	1	\$119,908	27	\$2,560,871	31	\$2,550,114
Exercise Science	2	\$17,483	16	\$1,163,205	22	\$1,277,017
Health Administration	3	\$10,261	39	\$720,430	57	\$328,390
Health Promotion & Education	4	\$27,170	47	\$1,630,212	55	\$1,114,584
Norman J. Arnold School of Public Health - Dean	1	\$11,500	4	\$557,670	13	\$1,237,295
Prevention Research Center	1	\$9,000	23	\$2,470,456	34	\$3,638,554
Total :	15	\$333,350	194	\$10,964,426	250	\$12,736,759
Regional and Four-Year Campuses						

DEPARTMENT	CURRENT MONTH		YEAR TO DATE		YEAR TO DATE	
	JUNE - 2001		FY 2001		FY 2000	
Regional Campuses & Continuing Education	0	\$0	1	\$32,100	0	\$0
USC Aiken	4	\$1,075,388	30	\$2,687,808	25	\$1,460,165
USC Beaufort	4	\$277,113	15	\$820,100	9	\$354,629
USC Lancaster	1	\$211,152	6	\$646,584	5	\$305,681
USC Salkehatchie	1	\$41,487	6	\$348,169	3	\$232,688
USC Spartanburg	4	\$245,914	55	\$1,943,815	76	\$1,831,157
USC Sumter	0	\$0	6	\$401,732	2	\$195,240
USC Union	0	\$0	1	\$198,582	2	\$195,688
Total :	14	\$1,851,054	120	\$7,078,890	122	\$4,575,248
School of Medicine						
Biochemistry *	4	\$258,868	22	\$1,821,786	22	\$1,641,899
Cell Biology & Neurosciences	1	\$133,621	6	\$811,711	6	\$307,606
Computer and Communications Resources	0	\$0	0	\$0	1	\$30,000
Developmental Biology & Anatomy	4	\$394,875	13	\$1,432,935	11	\$1,179,921
Family & Preventive Medicine	1	\$150,000	7	\$1,010,323	15	\$1,723,240
Health & Safety	0	\$0	1	\$10,000	1	\$4,800
Internal Medicine	4	\$10,710	40	\$2,460,216	41	\$2,545,601
Microbiology & Immunology	0	\$0	7	\$1,109,748	4	\$399,391
Neuropsychiatry	3	\$231,100	14	\$769,079	25	\$850,885
Obstetrics & Gynecology	2	\$84,043	4	\$154,568	4	\$192,968
Orthopaedic Surgery	0	\$0	2	\$7,250	1	\$3,500
Pathology	0	\$0	4	\$244,554	8	\$649,968
Pediatrics/Center for Developmental Disabilities	9	\$1,733,646	37	\$4,907,755	31	\$5,176,103
Pharmacology & Physiology	0	\$0	10	\$227,691	10	\$447,054
Radiology	0	\$0	1	\$400,313	1	\$481,407
Research & Special Projects	2	\$142,682	10	\$917,834	18	\$1,164,481
School of Medicine - Dean's Office	0	\$0	0	\$0	1	\$2,000
School of Medicine Graduate Program	0	\$0	1	\$17,680	0	\$0
South Carolina Cancer Center	0	\$0	2	\$11,711	0	\$0
Surgery	1	\$2,000	2	\$9,500	1	\$7,692
Total :	31	\$3,141,545	183	\$16,324,654	201	\$16,808,516
School of Music						
	0	\$0	1	\$38,914	2	\$99,400
Total :	0	\$0	1	\$38,914	2	\$99,400
School of the Environment						
	2	\$20,214	8	\$463,821	6	\$1,206,912
Total :	2	\$20,214	8	\$463,821	6	\$1,206,912
South Carolina Honors College						
	1	\$130,000	2	\$136,000	6	\$33,020
Total :	1	\$130,000	2	\$136,000	6	\$33,020
University Libraries						
Libraries & Collections	0	\$0	1	\$1,666	0	\$0
Thomas Cooper Library	0	\$0	2	\$260,297	5	\$66,137
Total :	0	\$0	3	\$261,963	5	\$66,137
University Press						
	0	\$0	0	\$0	1	\$3,000
Total :	0	\$0	0	\$0	1	\$3,000

DEPARTMENT	CURRENT MONTH JUNE - 2001		YEAR TO DATE FY 2001		YEAR TO DATE FY 2000	
Vice President for Research						
EPSCoR	0	\$0	28	\$1,807,336	0	\$0
Nanocenter	1	\$1,000,000	1	\$1,000,000	0	\$0
Sponsored Programs & Research	0	\$0	1	\$20,000	0	\$0
Vice President for Research	0	\$0	1	\$2,300,000	5	\$1,800,000
Total :	1	\$1,000,000	31	\$5,127,336	5	\$1,800,000
Report TOTAL :	171	\$14,053,305	1527	\$122,802,883	1635	\$122,127,035

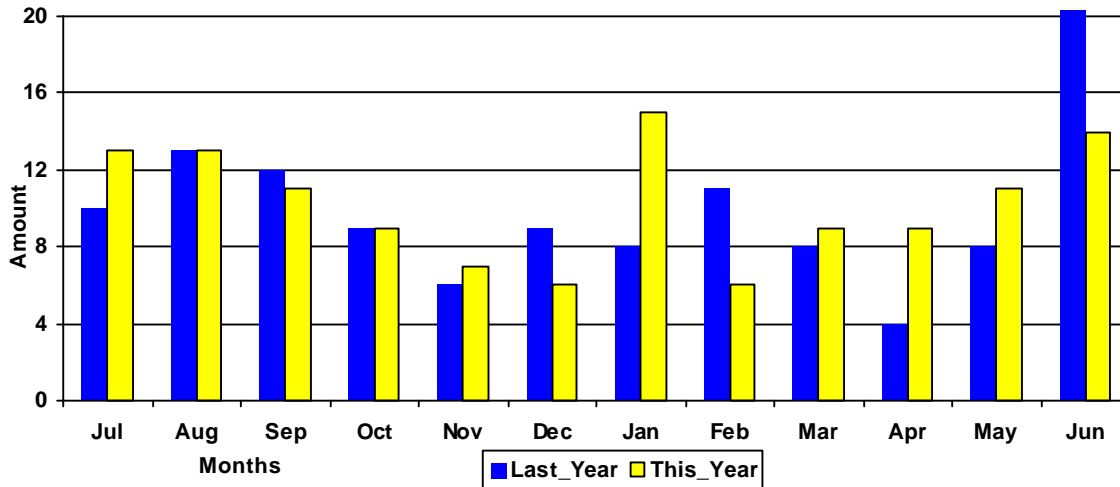
* - Biochemistry represents faculty with a dual appointment to the Department of Chemistry and the School of Medicine. The figures are included in both division totals but only once in the overall total.

Funding Agency Comparison Report

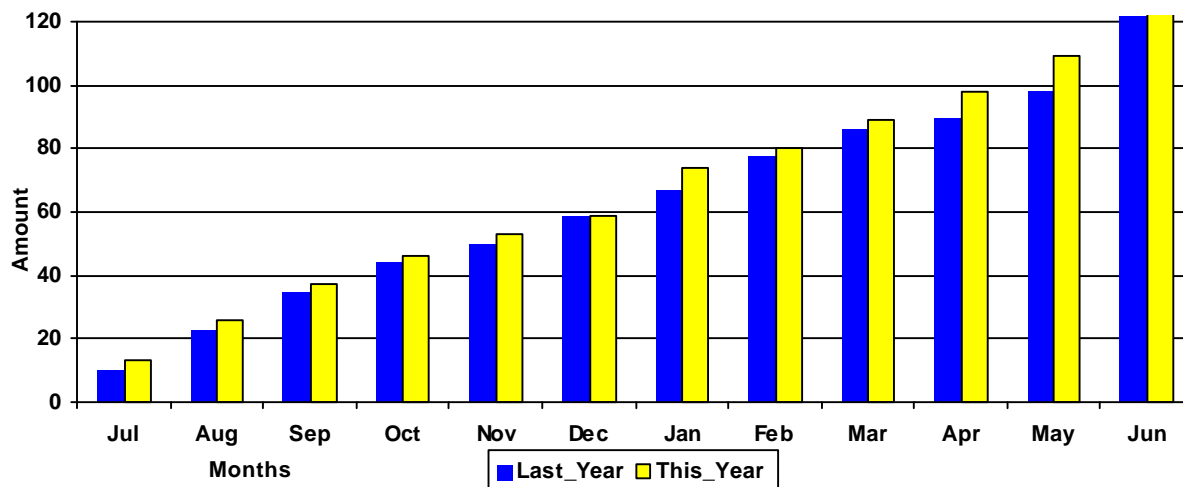
Year-To-Date -JUNE - 2001

	<u>FISCAL YEAR - 2001</u>		<u>FISCAL YEAR - 2000</u>	
NSF Awards	110	\$9,225,983	135	\$11,346,207
NIH Awards	119	\$12,401,337	111	\$12,064,235
Dept. Of Defense Awards	74	\$22,245,481	67	\$14,596,484
Dept. Of Education Awards	74	\$9,896,524	63	\$7,147,940
Dept. Of Energy Awards	48	\$4,770,720	34	\$5,101,737
SCUREF Awards from DOE	12	\$1,179,687	14	\$1,127,822
State and Municipalities Awards	253	\$16,099,424	313	\$16,920,147

Amounts Awarded
(In millions of dollars)



Cumulative Amounts Awarded
(In millions of dollars)



PROPOSALS BY DEPARTMENT

DEPARTMENT	CURRENT MONTH JUNE - 2001		YEAR TO DATE FY 2001		YEAR TO DATE FY 2000	
Business and Finance						
Campus Services	0	\$0	2	\$11,970	1	\$10,000
Facilities Planning/Energy Services	0	\$0	1	\$5,375	0	\$0
Total :	0	\$0	3	\$17,345	1	\$10,000
College of Criminal Justice						
	0	\$0	8	\$411,951	9	\$916,081
Total :	0	\$0	8	\$411,951	9	\$916,081
College of Education						
Education	1	\$23,000	3	\$100,500	3	\$424,580
Education Leadership & Policies	0	\$0	11	\$406,598	8	\$479,526
Educational Psychology	3	\$34,027	17	\$974,228	14	\$1,283,145
Instruction & Teacher Education	1	\$318,240	21	\$3,900,442	12	\$3,865,465
Office of Research	0	\$0	0	\$0	2	\$46,903
Physical Education	0	\$0	3	\$1,292,785	11	\$1,334,361
SC Educational Policy Center	1	\$100,000	3	\$192,816	1	\$100,000
School Improvement Council Assistance	1	\$198,805	1	\$198,805	4	\$184,400
USC Children's Center	0	\$0	2	\$32,000	0	\$0
Total :	7	\$674,072	61	\$7,098,174	55	\$7,718,380
College of Engineering & Information						
Chemical Engineering	3	\$239,265	54	\$10,413,908	64	\$10,495,820
Civil & Environmental Engineering	8	\$603,746	26	\$1,767,338	35	\$3,124,056
Computer Science & Engineering	3	\$487,410	39	\$2,698,117	0	\$0
Electrical Engineering	2	\$1,045,311	14	\$8,172,713	41	\$28,479,419
Engineering & Information Technology, College of	0	\$0	2	\$225,000	3	\$2,648,976
IMS - Engineering	0	\$0	0	\$0	3	\$1,046,653
Mechanical Engineering	10	\$439,657	58	\$5,012,029	74	\$6,897,956
SCAMP	0	\$0	2	\$812,000	2	\$610,000
Total :	26	\$2,815,389	195	\$29,101,105	222	\$53,302,880
College of Hospitality, Retail & Sports						
Center For Retailing Studies	1	\$20,816	2	\$32,245	2	\$246,818
Hospitality, Retail & Sports Mgmt - Dean's Office	0	\$0	1	\$25,000	2	\$62,300
Hotel, Restaurant & Tourism Administration	0	\$0	1	\$9,600	4	\$71,402
Sport Administration	0	\$0	1	\$13,000	1	\$50,000
Total :	1	\$20,816	5	\$79,845	9	\$430,520
College of Journalism & Mass						
	4	\$79,097	27	\$958,412	29	\$850,807
Total :	4	\$79,097	27	\$958,412	29	\$850,807
College of Liberal Arts						
African-American Studies Program	0	\$0	1	\$1,000	0	\$0
Anthropology	1	\$72,250	2	\$144,500	1	\$2,520
Archaeology & Anthropology, Institute of	2	\$267,666	16	\$1,777,448	18	\$2,119,031
Art	0	\$0	2	\$151,916	4	\$823,408
English	0	\$0	5	\$80,095	2	\$178,790
French & Classics	0	\$0	0	\$0	1	\$9,989

DEPARTMENT	CURRENT MONTH		YEAR TO DATE		YEAR TO DATE	
	JUNE - 2001		FY 2001		FY 2000	
Geography	0	\$0	12	\$634,388	11	\$852,896
Government & International Studies	1	\$1,000	8	\$209,167	16	\$219,412
History	0	\$0	15	\$214,956	15	\$251,085
Institute for Southern Studies	0	\$0	1	\$262,040	1	\$49,061
International Studies, Institute of	0	\$0	1	\$37,946	1	\$130,795
Linguistics Program	0	\$0	2	\$41,892	0	\$0
McKissick Museum	1	\$5,000	6	\$132,255	7	\$89,486
Philosophy	0	\$0	3	\$20,979	3	\$296,762
Psychology	7	\$1,291,722	47	\$10,386,135	46	\$8,877,713
Religious Studies	0	\$0	1	\$35,000	0	\$0
Sociology	0	\$0	7	\$242,003	6	\$311,354
Spanish, Italian, & Portuguese	0	\$0	1	\$49,941	0	\$0
Theatre, Speech & Dance	0	\$0	1	\$6,170	0	\$0
Trio Programs	0	\$0	8	\$1,705,146	4	\$1,305,191
Total :	12	\$1,637,638	139	\$16,132,977	136	\$15,517,493
College of Library & Information Science	1	\$8,750	8	\$159,886	9	\$224,514
Total :	1	\$8,750	8	\$159,886	9	\$224,514
College of Nursing						
Academic & Student Affairs	2	\$385,351	8	\$864,951	3	\$782,203
Administrative & Clinical Nursing	0	\$0	6	\$249,003	5	\$477,965
Family & Community Health Nursing	0	\$0	7	\$2,614,351	9	\$1,646,620
Total :	2	\$385,351	21	\$3,728,305	17	\$2,906,788
College of Pharmacy						
Basic Pharmaceutical Sciences	6	\$514,542	25	\$2,534,895	17	\$2,250,969
Clinical Pharmacy	0	\$0	4	\$136,428	3	\$118,000
Palmetto Poison Center	0	\$0	3	\$330,881	0	\$0
Pharmacy Practice	0	\$0	11	\$417,781	4	\$114,680
Total :	6	\$514,542	43	\$3,419,985	24	\$2,483,649
College of Science and Math						
Baruch Institute	3	\$394,279	42	\$3,977,546	41	\$4,631,503
Biological Sciences	8	\$1,126,282	82	\$10,201,483	98	\$9,103,524
Center For Science Education	0	\$0	4	\$132,986	3	\$55,232
Chemistry & Biochemistry	6	\$1,359,345	86	\$16,356,454	69	\$16,073,356
Computer Science	0	\$0	0	\$0	10	\$390,949
EPSCoR	0	\$0	1	\$40,000	16	\$3,270,570
Geological Sciences	7	\$186,198	63	\$6,591,656	57	\$6,378,877
Mathematics	0	\$0	14	\$912,610	15	\$1,088,458
Physics & Astronomy	2	\$520,317	30	\$8,739,922	27	\$7,845,361
Science & Math Administration	0	\$0	8	\$1,574,443	0	\$0
Statistics	1	\$108,375	16	\$628,566	21	\$451,852
Total :	27	\$3,694,796	346	\$49,155,666	357	\$49,289,682
College of Social Work	9	\$547,484	84	\$9,018,167	79	\$3,074,725
Total :	9	\$547,484	84	\$9,018,167	79	\$3,074,725
Darla Moore School of Business						
Business Administration - Division Of Research	4	\$161,362	56	\$1,087,671	36	\$408,691

DEPARTMENT	CURRENT MONTH JUNE - 2001		YEAR TO DATE FY 2001		YEAR TO DATE FY 2000	
Small Business Development Center	1	\$57,500	6	\$2,745,338	5	\$1,342,109
Total :	5	\$218,862	62	\$3,833,009	41	\$1,750,800
Division of Student Affairs						
International Programs for Students	0	\$0	0	\$0	3	\$10,250
Student Health	0	\$0	4	\$606,435	5	\$848,172
Student Life	0	\$0	2	\$153,362	1	\$99,955
Total :	0	\$0	6	\$759,797	9	\$958,377
Earth Sciences & Resources Institute						
	0	\$0	10	\$4,084,601	26	\$2,411,191
Total :	0	\$0	10	\$4,084,601	26	\$2,411,191
English Program for Internationals						
English Program For Internationals	0	\$0	1	\$232,149	0	\$0
Total :	0	\$0	1	\$232,149	0	\$0
Equal Opportunity Programs						
	0	\$0	0	\$0	1	\$20,000
Total :	0	\$0	0	\$0	1	\$20,000
Institute for Families in Society						
Families in Society, Institute for	2	\$874,790	21	\$4,114,727	24	\$2,185,216
Total :	2	\$874,790	21	\$4,114,727	24	\$2,185,216
Institute of Public Affairs						
	4	\$81,974	42	\$2,412,809	53	\$3,424,934
Total :	4	\$81,974	42	\$2,412,809	53	\$3,424,934
Institutional Planning						
Law Enforcement & Safety						
	0	\$0	2	\$67,528	1	\$253,597
Total :	0	\$0	2	\$67,528	1	\$253,597
Law School						
Law School	1	\$10,000	12	\$1,342,522	12	\$1,140,732
Total :	1	\$10,000	12	\$1,342,522	12	\$1,140,732
Norman J. Arnold School of Public Health						
Center for Health Services and Policy Research	1	\$6,775	1	\$6,775	0	\$0
Communication Sciences & Disorders	0	\$0	1	\$199,011	10	\$1,053,689
Environmental Health Sciences	2	\$147,791	23	\$1,868,781	26	\$3,354,606
Epidemiology & Biostatistics	5	\$1,753,035	40	\$7,749,372	42	\$4,634,132
Exercise Science	2	\$679,030	18	\$1,809,228	23	\$4,056,041
Health Administration	4	\$489,410	40	\$761,605	60	\$964,471
Health Promotion & Education	3	\$7,170	42	\$2,101,534	57	\$1,439,442
Norman J. Arnold School of Public Health - Dean	3	\$2,620,630	7	\$4,818,360	12	\$2,531,615
Prevention Research Center	13	\$2,218,435	34	\$4,380,294	33	\$6,468,858
Total :	33	\$7,922,276	206	\$23,694,960	263	\$24,502,853
Office of the Provost						
	0	\$0	0	\$0	1	\$96,240

DEPARTMENT	CURRENT MONTH JUNE - 2001		YEAR TO DATE FY 2001		YEAR TO DATE FY 2000	
Total :	0	\$0	0	\$0	1	\$96,240
Regional and Four-Year Campuses						
Regional Campuses & Continuing Education	0	\$0	0	\$0	1	\$32,100
USC Aiken	4	\$379,890	28	\$2,645,558	26	\$2,071,310
USC Beaufort	3	\$102,000	16	\$1,072,382	13	\$413,465
USC Lancaster	0	\$0	3	\$370,165	1	\$11,993
USC Salkehatchie	1	\$41,487	9	\$597,421	5	\$521,134
USC Spartanburg	1	\$22,983	32	\$1,904,244	46	\$1,540,954
USC Sumter	0	\$0	6	\$962,900	4	\$395,988
USC Union	0	\$0	1	\$299,376	1	\$215,232
Total :	9	\$546,360	95	\$7,852,046	97	\$5,202,176
School of Medicine						
Animal Resources Facility	0	\$0	1	\$128,159	0	\$0
Biochemistry *	4	\$1,007,194	14	\$2,947,010	12	\$2,338,681
Cell Biology & Neurosciences	0	\$0	5	\$749,684	5	\$1,061,278
Developmental Biology & Anatomy	1	\$36,125	19	\$2,515,380	27	\$3,101,838
Family & Preventive Medicine	3	\$235,474	10	\$1,106,837	15	\$3,445,262
Health & Safety	0	\$0	1	\$10,000	1	\$6,700
Internal Medicine	1	\$10,000	7	\$917,244	11	\$561,264
Medicine Library	0	\$0	1	\$4,850	0	\$0
Microbiology & Immunology	2	\$206,809	8	\$1,348,821	11	\$1,766,270
Neuropsychiatry	2	\$406,265	11	\$1,872,615	9	\$598,147
Obstetrics & Gynecology	0	\$0	3	\$203,043	4	\$202,993
Ophthalmology	0	\$0	1	\$159,576	0	\$0
Orthopaedic Surgery	0	\$0	0	\$0	1	\$12,500
Pathology	3	\$551,977	12	\$1,968,236	12	\$1,419,080
Pediatrics/Center for Developmental Disabilities	6	\$1,103,450	22	\$2,951,788	24	\$5,264,149
Pharmacology & Physiology	0	\$0	18	\$1,635,406	18	\$2,180,533
Radiology	1	\$401,974	2	\$802,287	0	\$0
Research & Special Projects	0	\$0	2	\$124,350	2	\$261,403
School of Medicine - Dean's Office	0	\$0	0	\$0	1	\$106,551
School of Medicine Graduate Program	0	\$0	2	\$17,680	0	\$0
South Carolina Cancer Center	0	\$0	2	\$11,711	0	\$0
Surgery	0	\$0	4	\$257,316	3	\$209,150
Total :	23	\$3,959,268	145	\$19,731,993	156	\$22,535,799
School of Music	0	\$0	1	\$41,564	2	\$560,765
Total :	0	\$0	1	\$41,564	2	\$560,765
School of the Environment	0	\$0	16	\$2,341,467	7	\$3,381,494
Total :	0	\$0	16	\$2,341,467	7	\$3,381,494
South Carolina Honors College	0	\$0	4	\$155,939	9	\$396,341
Total :	0	\$0	4	\$155,939	9	\$396,341
University Libraries						
Libraries & Collections	0	\$0	2	\$7,350	0	\$0
Thomas Cooper Library	0	\$0	4	\$1,173,636	7	\$776,449
Total :	0	\$0	6	\$1,180,986	7	\$776,449

DEPARTMENT	CURRENT MONTH JUNE - 2001		YEAR TO DATE FY 2001		YEAR TO DATE FY 2000	
University Press	0	\$0	1	\$10,000	0	\$0
Total :	0	\$0	1	\$10,000	0	\$0
Vice President for Research						
EPSCoR	0	\$0	3	\$732,658	0	\$0
Sponsored Programs & Research	0	\$0	0	\$0	1	\$20,000
Vice President for Research - General	0	\$0	1	\$2,000,000	1	\$1,800,000
Total :	0	\$0	4	\$2,732,658	2	\$1,820,000
Report TOTAL :	168	\$22,984,271	1560	\$190,923,561	1646	\$205,803,802

* - Biochemistry represents faculty with a dual appointment to the Department of Chemistry and the School of Medicine. The figures are included in both division totals but only once in the overall total.