

MEMORANDUM

To: Harris Pastides, Ph.D.
 Interim Vice President for Research

From: Anthony M. Boccanfuso, Ph.D.
 Managing Director

RE: Report of Sponsored Program Activity for June 2003 and FY2003

Date: July 10, 2003

June marks the end of the fiscal year and preliminary numbers for the month and year are provided.

Award Dollars set record in FY2003: The University community should be commended for its hard work which resulted in a record year for award dollar obligations. For FY2003, funding obligations increased twenty (20%) compared to FY2002, growing to \$130.8 million. The prior record was set in FY2001 when \$123 million was received.

Proposals Dollars requested set record in FY2003: USC faculty, staff and students also requested a record amount of funding through new projects submitted in FY2003. For FY2003, requested dollars increased thirty-nine (39%) compared to FY2002, growing to \$244 million. The prior record was set in FY2000 when \$206 million was requested.

	June FY03	FY02 Totals	FY03 Totals	YTD Change
Award Dollars	\$9,141,609	\$109,215,744	\$130,866,505	20%
Research Direct Expenditures*	\$9,241,544	\$59,765,001	\$63,217,106	6%
Research IDC Expenditures*	\$2,188,878	\$14,788,095	\$15,873,855	7%
Proposals Submitted	149	1507	1624	8%
Proposal Dollars Requested	\$45,381,828	\$175,799,517	\$244,178,051	39%
Notable Areas				
Health Science Colleges	\$2,651,865	\$42,444,220	\$48,248,705	14%
Engineering & Information Technology	\$320,498	\$18,528,748	\$18,387,697	(1%)
Liberal Arts, College of	\$920,393	\$6,586,589	\$13,109,244	99%
Regional and Four-Year Campuses	\$653,411	\$4,795,622	\$8,396,656	75%
Science and Mathematics, College of	\$3,481,424	\$19,140,631	\$26,537,801	39%

cc: Andrew A. Sorensen, Ph.D.
 Jerome D. Odom, Ph.D.
 R. Steven Etheredge
 Richard Kelly

* Subject to Post Close Adjustment

June 2003 Featured Awards

Education, College of

Instruction & Teacher Education

Kent, Laura

*Eisenhower Professional Development Grant - Applications of
Research-Based Approaches to K-5 Math Instruction - (FL12)* **\$7,982**
SC Commission on Higher Education/USDE

Engineering & Information Technology, College of

Mechanical Engineering

Lyons, Jed

Ebert, Christine

*GK-12 Engineering Fellowships to Enhance Science Education in South
Carolina Schools - (FJ00)* **\$50,000**
National Science Foundation (NSF) – General

Medicine, School of

Cell Biology & Neurosciences

Lavoie, Holly

Ovarian LDL Receptor and Star Gene Regulation - (F176) **\$141,758**
National Institute of Child Health & Human Development/NIH

Pathology & Microbiology

Wargovich, Michael

Tea Modulation of Colon Carcinogenesis - (FA03) **\$172,324**
USCRF/National Cancer Institute (NCI)/NIH

Pharmacy, College of

Pharmacy & Health Outcomes Sci.

Shinogle, Judith

Effects of Patient Cost-Sharing on Utilization and Cost in Managed Care - **\$30,000**
USCRF/PhRMA Foundation

Regional and Four-Year Campuses

USC Salkehatchie

Rice, Anne

USC Salkehatchie Entrepreneurial Development Center Project - (FL06) **\$198,352**
USCRF/Western Carolina Higher Education Commission/USDA

Science and Mathematics, College of

Geological Sciences

Kohn, Matthew

*Collaborative Research: Acadian vs. Taconian Tectonism in the Southern
Appalachian Western Blue Ridge - Implications for Modelsof Terrane
Accretion - (FA54)* **\$134,971**
USCRF/National Science Foundation (NSF) - General

Sponsored Programs and Research Monthly Report

SUMMARY OF AWARDS JUNE - 2003

By Purpose

Research Awards	\$5,732,336
Training Awards	\$638,700
Service Awards	\$2,598,550
Equipment Awards	\$0
Graduate Assistantship Awards	\$172,547

TOTAL: \$9,142,133

By Source

Federal Awards	\$7,016,234
Private Awards	\$779,234
State Awards	\$1,346,665

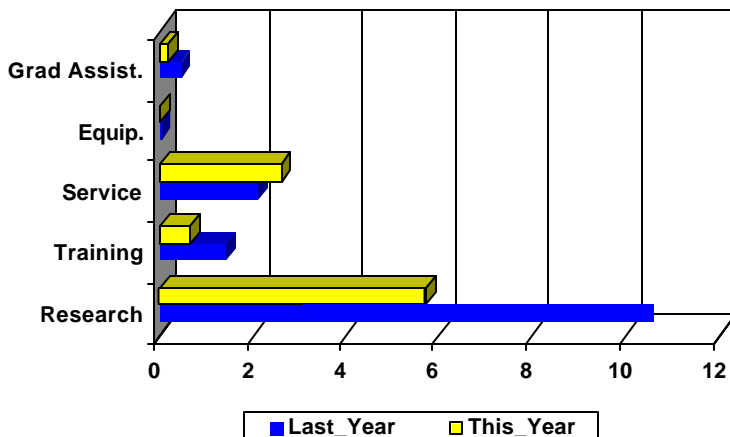
TOTAL: \$9,142,133

COMPARISON OF AMOUNT RECEIVED

JUNE - 2003 vs. JUNE - 2002

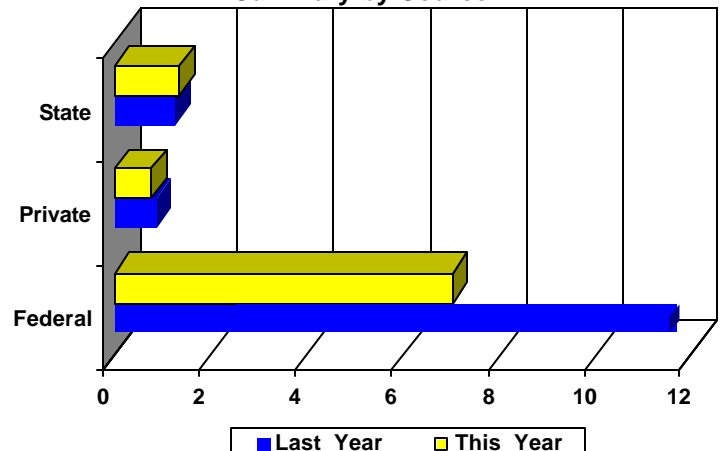
Amounts Received
(In millions of dollars)

Summary by Purpose



Amounts Received
(In millions of dollars)

Summary by Source



AWARDS BY DEPARTMENT

DEPARTMENT	CURRENT MONTH JUNE - 2003		YEAR TO DATE FY 2003		YEAR TO DATE FY 2002	
Business & Finance						
Recycling & Waste Management	0	\$0	0	\$0	2	\$19,970
Total :	0	\$0	0	\$0	2	\$19,970
Business, Moore School of						
Business Administration - Division of Research	1	\$3,800	33	\$1,035,081	63	\$1,127,927
Small Business Development Center	0	\$0	5	\$348,143	10	\$1,453,762
Total :	1	\$3,800	38	\$1,383,224	73	\$2,581,689
Education, College of						
Education	0	\$0	3	\$121,841	2	\$35,760
Education Leadership & Policies	2	\$27,000	7	\$242,408	5	\$197,682
Educational Psychology	3	\$264,271	12	\$750,722	22	\$1,154,324
Instruction & Teacher Education	7	\$158,179	29	\$3,147,069	22	\$2,861,262
Office of Program Evaluation	1	\$33,400	8	\$431,878	0	\$0
Physical Education	0	\$0	2	\$305,000	11	\$1,141,110
Physical Education	0	\$0	1	\$300,000	0	\$0
SC Educational Policy Center	1	\$100,000	1	\$100,000	2	\$115,500
School Improvement Council Assistance	1	\$50,000	3	\$200,759	4	\$209,805
USC Children's Center	0	\$0	1	\$7,500	0	\$0
Total :	15	\$632,850	67	\$5,607,177	68	\$5,715,443
Engineering & Information Technology,						
Chemical Engineering	2	\$23,000	42	\$5,631,918	38	\$3,287,355
Civil & Environmental Engineering	2	\$47,000	22	\$909,410	18	\$1,701,933
Computer Science & Engineering	1	\$800	23	\$765,384	17	\$874,478
Electrical Engineering	0	\$0	15	\$7,673,719	21	\$7,329,824
Engineering & Information Technology, College of	2	\$119,898	4	\$168,648	6	\$1,682,495
Mechanical Engineering	5	\$129,800	32	\$2,891,835	35	\$2,146,948
SC Alliance for Minority Participation (SCAMP)	0	\$0	7	\$346,783	11	\$1,505,715
Total :	12	\$320,498	145	\$18,387,697	146	\$18,528,748
English Program for Internationals						
English Program for Internationals	0	\$0	1	\$280,140	1	\$266,508
Total :	0	\$0	1	\$280,140	1	\$266,508
Enrollment Management						
	0	\$0	1	\$37,583	1	\$33,047
Total :	0	\$0	1	\$37,583	1	\$33,047
Environment, School of the						
Earth Sciences & Resources Institute	0	\$0	5	\$707,050	8	\$888,740
Environment, School of the	1	\$12,000	13	\$879,615	12	\$621,018
Total :	1	\$12,000	18	\$1,586,665	20	\$1,509,758
Families in Society, Institute for						
	3	\$29,035	22	\$2,215,842	25	\$2,250,173
Total :	3	\$29,035	22	\$2,215,842	25	\$2,250,173

DEPARTMENT	CURRENT MONTH JUNE - 2003		YEAR TO DATE FY 2003		YEAR TO DATE FY 2002	
Honors College, South Carolina	1	\$105,600	3	\$117,791	1	\$102,676
Total :	0	\$0	0	\$0	0	\$0
Hospitality, Retail & Sports Management,						
Hospitality, Retail & Sports Mgmt - (Dean)	0	\$0	1	\$38,000	3	\$152,500
Retailing Studies, Center for	0	\$0	1	\$8,000	2	\$36,429
Sport Administration	0	\$0	0	\$0	1	\$14,000
Total :	0	\$0	2	\$46,000	6	\$202,929
Institutional Planning						
Law, School of						
Law, School of	3	\$266,007	12	\$1,377,390	15	\$1,441,774
Total :	3	\$266,007	12	\$1,377,390	15	\$1,441,774
Liberal Arts, College of						
Anthropology	0	\$0	0	\$0	1	\$72,250
Archaeology & Anthropology, SC Institute of	0	\$0	11	\$1,511,082	14	\$1,597,499
Art	1	\$1,200	3	\$30,400	3	\$39,984
Comparative Literature	0	\$0	0	\$0	1	\$1,200
Criminology & Criminal Justice, Department of	0	\$0	1	\$24,447	2	\$80,392
English	0	\$0	2	\$50,000	4	\$100,075
Geography	1	\$50,024	20	\$968,643	23	\$897,963
Government & International Studies	0	\$0	7	\$38,373	8	\$157,194
History	1	\$77,550	18	\$265,103	33	\$173,881
International Studies, Institute of	0	\$0	1	\$214,608	4	\$366,610
Languages, Literatures, and Cultures, Department	0	\$0	0	\$0	1	\$7,533
Liberal Arts - (Dean)	0	\$0	0	\$0	1	\$6,000
McKissick Museum	0	\$0	5	\$134,515	5	\$21,270
Naval Science	0	\$0	2	\$4,000	3	\$5,000
Philosophy	0	\$0	3	\$27,580	2	\$55,294
Psychology	13	\$776,119	62	\$6,097,897	43	\$2,007,050
Public Service & Policy Research, Institute for	1	\$15,500	24	\$3,462,682	20	\$744,602
Religious Studies	0	\$0	1	\$25,000	1	\$50,000
Sociology	0	\$0	2	\$148,757	1	\$6,018
Southern Studies, Institute for	0	\$0	2	\$106,157	5	\$196,774
Total :	17	\$920,393	164	\$13,109,244	175	\$6,586,589
Mass Communications & Information						
Journalism & Mass Communications, School of	1	\$215,652	18	\$1,358,043	13	\$217,566
Library & Information Sciences, School of	0	\$0	8	\$68,275	6	\$64,759
Total :	1	\$215,652	26	\$1,426,318	19	\$282,325
Medicine, School of						
Basic Science Research	0	\$0	2	\$226,938	1	\$209,244
Biochemistry *	1	\$255,435	27	\$2,281,905	29	\$2,509,308
Cancer Center, South Carolina	0	\$0	11	\$197,922	6	\$151,014
Cell & Developmental Biology & Anatomy	3	\$320,650	20	\$1,924,146	20	\$1,945,069
Cell Biology & Neurosciences	1	\$141,758	2	\$166,456	9	\$1,016,224
Family & Preventive Medicine	0	\$0	9	\$1,442,320	10	\$712,621

DEPARTMENT	CURRENT MONTH JUNE - 2003		YEAR TO DATE FY 2003		YEAR TO DATE FY 2002	
Health & Safety	0	\$0	0	\$0	1	\$9,600
Internal Medicine	4	\$70,224	29	\$2,824,439	45	\$2,998,076
Medicine Library	0	\$0	4	\$271,327	2	\$137,048
Neuropsychiatry	0	\$0	8	\$661,437	10	\$219,489
Obstetrics & Gynecology	0	\$0	2	\$126,607	1	\$59,000
Ophthalmology	0	\$0	6	\$44,688	1	\$196
Pathology	0	\$0	3	\$283,100	5	\$710,075
Pathology & Microbiology	2	\$201,272	13	\$1,168,062	8	\$719,888
Pediatrics/Developmental Disabilities, Center for	5	\$1,080,575	28	\$2,942,093	24	\$3,546,174
Pharmacology, Physiology & Neuroscience	1	\$50,000	11	\$694,289	3	\$116,096
Radiology	0	\$0	1	\$412,435	1	\$401,974
Research & Special Projects	1	\$9,800	19	\$627,861	21	\$832,110
Surgery	2	\$29,458	10	\$219,277	13	\$585,516
Total :	20	\$2,159,172	205	\$16,515,302	210	\$16,878,722
Music, School of	0	\$0	2	\$17,695	1	\$35,937
Total :	0	\$0	2	\$17,695	1	\$35,937
Nursing, College of						
Academic & Student Affairs	0	\$0	6	\$572,904	16	\$844,974
Administrative & Clinical Nursing	0	\$0	2	\$97,164	1	\$86,003
Family & Community Health Nursing	0	\$0	5	\$314,679	2	\$36,917
Total :	0	\$0	13	\$984,747	19	\$967,894
Pharmacy, College of						
Basic Pharmaceutical Sciences	2	\$91,046	13	\$1,077,298	8	\$839,506
Palmetto Poison Center	0	\$0	2	\$215,990	3	\$291,131
Pharmacy & Health Outcomes Sci.	1	\$30,000	3	\$79,500	7	\$157,111
Pharmacy Practice	0	\$0	3	\$114,505	4	\$122,835
Total :	3	\$121,046	21	\$1,487,293	22	\$1,410,583
Provost, Office of the						
Provost, Office of the	0	\$0	1	\$4,335	0	\$0
TRIO Programs	0	\$0	6	\$1,730,185	7	\$1,752,942
Total :	0	\$0	7	\$1,734,520	7	\$1,752,942
Public Health, Norman J. Arnold School of						
Communication Sciences & Disorders	1	\$72,750	4	\$156,558	2	\$80,334
Environmental Health Sciences	3	\$60,500	39	\$2,168,237	51	\$2,052,428
Epidemiology & Biostatistics	1	\$1,302	45	\$3,805,324	34	\$3,771,731
Exercise Science	2	\$9,963	23	\$2,414,896	18	\$1,681,566
Health Administration	1	\$4,071	35	\$963,198	25	\$747,409
Health Promotion, Education & Behavior	1	\$3,618	49	\$2,688,653	38	\$1,153,928
Health Services & Policy Research, Center for	2	\$31,596	12	\$462,549	10	\$931,452
Prevention Research Center	0	\$0	22	\$3,611,483	25	\$3,584,532
Public Health, Norman J. Arnold School of -Dean	2	\$170,596	14	\$6,379,972	6	\$3,519,231
Total :	13	\$354,396	243	\$22,650,870	209	\$17,522,611
Regional and Four-Year Campuses						
USC Aiken	3	\$211,958	31	\$2,260,337	23	\$1,069,398
USC Beaufort	2	\$70,853	13	\$1,158,673	18	\$452,550

DEPARTMENT	CURRENT MONTH JUNE - 2003		YEAR TO DATE FY 2003		YEAR TO DATE FY 2002	
USC Lancaster	0	\$0	5	\$565,689	4	\$260,153
USC Salkehatchie	1	\$198,352	10	\$657,945	8	\$611,009
USC Spartanburg	4	\$170,248	59	\$3,253,985	68	\$1,918,533
USC Sumter	1	\$2,000	3	\$262,079	6	\$254,508
USC Union	0	\$0	2	\$237,948	2	\$229,471
Total :	11	\$653,411	123	\$8,396,656	129	\$4,795,622
Research, Vice President for						
Biomedical Research Infrastructure Network (BRIN)	0	\$0	8	\$1,098,209	0	\$0
NanoCenter	1	\$104,509	9	\$925,912	14	\$2,953,133
Research, Vice President for - (General)	0	\$0	0	\$0	4	\$513,580
Sponsored Programs & Research	0	\$0	2	\$31,034	1	\$9,238
Technology Incubator	0	\$0	1	\$160,000	0	\$0
Total :	1	\$104,509	20	\$2,215,155	19	\$3,475,951
Science and Mathematics, College of						
Baruch Institute	3	\$1,291,750	35	\$6,399,849	30	\$2,918,345
Biological Research & Technology, Institute for	0	\$0	0	\$0	2	\$3,300
Biological Sciences	9	\$272,939	60	\$5,003,243	49	\$4,420,195
Chemistry & Biochemistry	4	\$331,120	58	\$4,557,135	57	\$4,078,944
COBRE: Center for Colon Cancer Research	0	\$0	11	\$2,357,782	0	\$0
Geological Sciences	3	\$492,755	57	\$3,517,780	58	\$2,277,105
Marine Science	0	\$0	0	\$0	2	\$5,250
Mathematics	4	\$121,478	10	\$983,681	11	\$804,202
Physics & Astronomy	7	\$863,382	34	\$2,387,148	22	\$2,687,341
Science & Math Administration	2	\$108,000	8	\$920,661	7	\$833,043
Science Education, Center for	0	\$0	2	\$20,400	2	\$628,472
Statistics	0	\$0	17	\$390,122	19	\$484,434
Total :	32	\$3,481,424	292	\$26,537,801	259	\$19,140,631
Social Work, College of						
	5	\$17,775	71	\$6,611,017	79	\$5,664,410
Total :	5	\$17,775	71	\$6,611,017	79	\$5,664,410
Student Affairs, Division of						
Student Health	0	\$0	4	\$39,262	3	\$313,265
Student Life	0	\$0	2	\$132,277	4	\$158,199
Total :	0	\$0	6	\$171,539	7	\$471,464
University Libraries						
Thomas Cooper Library	0	\$0	1	\$251,268	5	\$1,133,532
Total :	0	\$0	1	\$251,268	5	\$1,133,532
Report TOTAL :	138	\$9,142,133	1476	\$130,867,029	1489	\$110,262,620

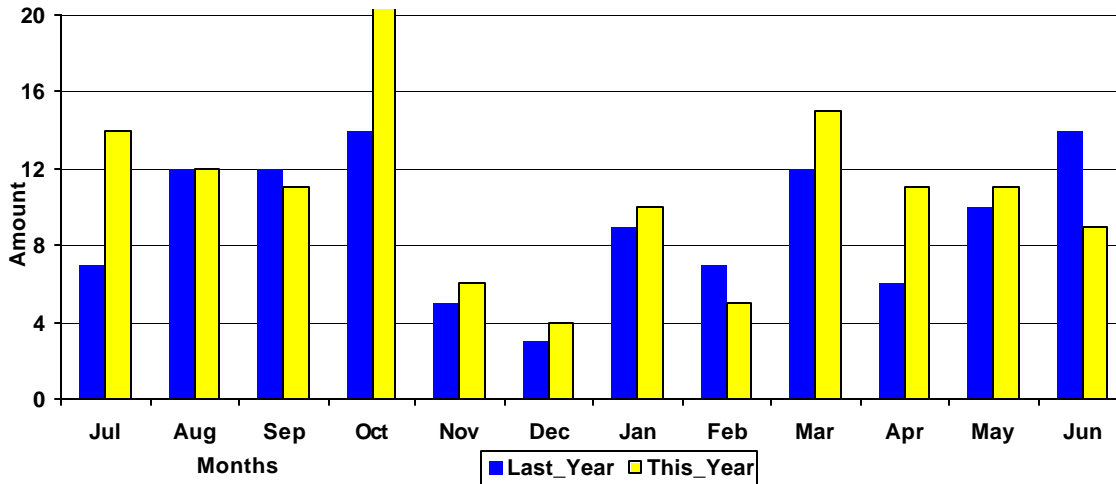
* - Biochemistry represents faculty with a dual appointment to the Department of Chemistry and the School of Medicine. The figures are included in both division totals but only once in the overall total.

Funding Agency Comparison Report

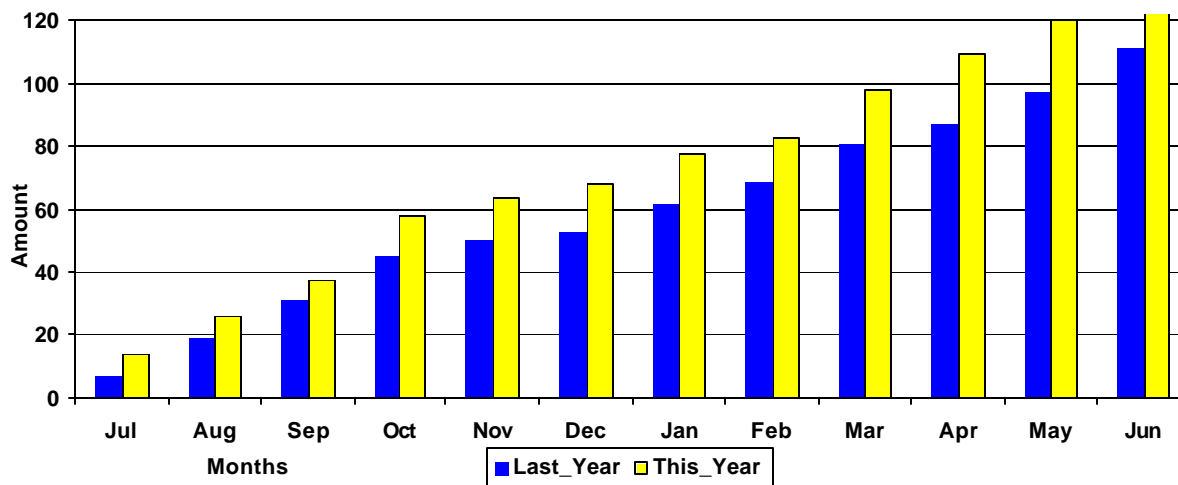
Year-To-Date -JUNE - 2003

	<u>FISCAL YEAR - 2003</u>		<u>FISCAL YEAR - 2002</u>		<u>YTD Change</u>
NSF Awards	129	\$11,847,156	119	\$11,808,166	0%
NIH Awards	172	\$20,378,696	127	\$12,246,000	66%
Dept. Of Defense Awards	75	\$15,104,885	69	\$9,478,773	59%
Dept. Of Education Awards	80	\$9,362,411	78	\$9,249,418	1%
Dept. Of Energy Awards	53	\$5,377,217	54	\$7,811,740	(31%)
State and Municipalities Awards	178	\$8,739,275	183	\$8,629,991	1%
Non Profit Awards	206	\$6,143,961	249	\$8,533,180	(28%)
Business and Industry Awards	162	\$3,630,833	185	\$2,904,998	25%

Amounts Awarded
(In millions of dollars)



Cumulative Amounts Awarded
(In millions of dollars)



PROPOSALS BY DEPARTMENT

DEPARTMENT	CURRENT MONTH JUNE - 2003		YEAR TO DATE FY 2003		YEAR TO DATE FY 2002	
Business & Finance						
Campus Services	0	\$0	0	\$0	1	\$7,497
Recycling & Waste Management	0	\$0	0	\$0	1	\$10,000
Total :	0	\$0	0	\$0	2	\$17,497
Business, Moore School of						
Business Administration - Division of Research	2	\$19,722	34	\$758,520	50	\$878,412
Small Business Development Center	0	\$0	6	\$1,529,869	7	\$2,588,813
Total :	2	\$19,722	40	\$2,288,389	57	\$3,467,225
Computer Services						
	1	\$20,000	1	\$20,000	0	\$0
Total :	1	\$20,000	1	\$20,000	0	\$0
Education, College of						
Education	0	\$0	0	\$0	5	\$415,584
Education Leadership & Policies	3	\$76,755	6	\$286,683	9	\$451,902
Educational Psychology	1	\$40,000	10	\$928,479	25	\$1,534,713
Instruction & Teacher Education	6	\$478,427	26	\$4,006,585	11	\$741,652
Office of Program Evaluation	0	\$0	4	\$245,477	1	\$126,370
Physical Education	0	\$0	0	\$0	8	\$1,132,110
Physical Education	0	\$0	1	\$1,020,000	0	\$0
SC Educational Policy Center	2	\$105,953	2	\$105,953	3	\$116,500
School Improvement Council Assistance	1	\$188,759	2	\$200,759	2	\$75,250
USC Children's Center	0	\$0	2	\$36,500	0	\$0
Total :	13	\$889,894	53	\$6,830,436	64	\$4,594,081
Engineering & Information Technology,						
Chemical Engineering	4	\$536,143	66	\$12,773,892	42	\$3,190,884
Civil & Environmental Engineering	1	\$9,000	36	\$3,230,934	15	\$1,250,314
Computer Science & Engineering	2	\$134,144	48	\$6,182,038	34	\$3,495,115
Electrical Engineering	3	\$18,693,175	36	\$28,829,408	21	\$10,313,908
Engineering & Information Technology, College of	1	\$250,000	7	\$552,504	4	\$181,836
Mechanical Engineering	2	\$489,599	41	\$4,093,376	38	\$5,501,378
SC Alliance for Minority Participation (SCAMP)	0	\$0	1	\$16,000	4	\$1,604,172
Total :	13	\$20,112,061	235	\$55,678,152	158	\$25,537,607
English Program for Internationals						
English Program for Internationals	0	\$0	1	\$280,140	1	\$265,492
Total :	0	\$0	1	\$280,140	1	\$265,492
Environment, School of the						
Earth Sciences & Resources Institute	1	\$1,876	9	\$1,111,716	13	\$2,426,988
Environment, School of the	3	\$415,587	20	\$1,578,277	25	\$3,668,068
Total :	4	\$417,463	29	\$2,689,993	38	\$6,095,056
Families in Society, Institute for						
	2	\$110,112	30	\$3,561,233	24	\$2,297,498

DEPARTMENT	CURRENT MONTH JUNE - 2003		YEAR TO DATE FY 2003		YEAR TO DATE FY 2002	
Total :	2	\$110,112	30	\$3,561,233	24	\$2,297,498
Honors College, South Carolina	0	\$0	9	\$1,409,237	2	\$79,482
Total :	0	\$0	9	\$1,409,237	2	\$79,482
Hospitality, Retail & Sports Management,						
Administrative Information Management	0	\$0	1	\$244,450	1	\$490,886
Hospitality, Retail & Sports Mgmt - (Dean)	0	\$0	2	\$129,899	1	\$25,000
Hotel, Restaurant & Tourism Administration	0	\$0	0	\$0	1	\$25,000
Retailing Studies, Center for	0	\$0	4	\$2,507,184	3	\$26,750
Sport Administration	0	\$0	0	\$0	1	\$14,000
Total :	0	\$0	7	\$2,881,533	7	\$581,636
Institutional Planning						
Law Enforcement & Safety	0	\$0	0	\$0	1	\$21,600
Total :	0	\$0	0	\$0	1	\$21,600
Law, School of						
Law, School of	2	\$364,099	14	\$1,511,617	15	\$1,994,376
Total :	2	\$364,099	14	\$1,511,617	15	\$1,994,376
Liberal Arts, College of						
Anthropology	0	\$0	4	\$429,434	1	\$18,525
Archaeology & Anthropology, SC Institute of	0	\$0	9	\$2,287,518	13	\$1,306,974
Art	0	\$0	4	\$271,200	4	\$88,954
Comparative Literature	0	\$0	0	\$0	1	\$1,200
Criminology & Criminal Justice, Department of	1	\$70,883	3	\$140,654	0	\$0
English	1	\$151,693	4	\$279,894	4	\$96,790
Geography	1	\$1,605,068	22	\$3,008,994	18	\$843,946
Government & International Studies	0	\$0	8	\$159,366	10	\$306,654
History	0	\$0	12	\$238,159	21	\$246,815
International Studies, Institute of	0	\$0	4	\$477,045	5	\$758,524
Languages, Literatures, and Cultures, Department	0	\$0	1	\$24,000	1	\$7,533
McKissick Museum	1	\$1,200	5	\$111,049	6	\$140,020
Philosophy	0	\$0	1	\$450,331	1	\$10,000
Psychology	7	\$458,960	56	\$11,956,694	35	\$5,652,953
Public Service & Policy Research, Institute for	1	\$27,721	17	\$1,242,654	26	\$3,588,491
Religious Studies	0	\$0	1	\$25,000	1	\$50,000
Sociology	0	\$0	8	\$633,322	5	\$374,712
Southern Studies, Institute for	0	\$0	4	\$564,903	2	\$249,388
Total :	12	\$2,315,525	163	\$22,300,217	154	\$13,741,479
Mass Communications & Information						
Journalism & Mass Communications, School of	1	\$150,000	18	\$1,571,513	11	\$216,958
Library & Information Sciences, School of	0	\$0	7	\$147,928	0	\$0
Mass Communications & Information Studies, Colleg	0	\$0	1	\$89,954	0	\$0
Total :	1	\$150,000	26	\$1,809,395	11	\$216,958
Medicine, School of						

DEPARTMENT	CURRENT MONTH		YEAR TO DATE		YEAR TO DATE	
	JUNE - 2003		FY 2003		FY 2002	
Basic Science Research	0	\$0	1	\$25,000	0	\$0
Biochemistry *	0	\$0	0	\$0	6	\$1,191,887
Cancer Center, South Carolina	0	\$0	9	\$158,382	3	\$105,968
Cell & Developmental Biology & Anatomy	2	\$377,774	24	\$4,545,115	16	\$2,595,907
Cell Biology & Neurosciences	0	\$0	0	\$0	7	\$925,827
Family & Preventive Medicine	0	\$0	11	\$2,076,646	10	\$1,789,490
Internal Medicine	1	\$61,508	11	\$1,122,700	20	\$947,385
Medicine Library	0	\$0	1	\$27,042	1	\$3,801
Medicine, School of - (Dean)	0	\$0	0	\$0	1	\$27,493
Medicine, School of - (Graduate Program)	0	\$0	0	\$0	1	\$17,680
Neuropsychiatry	0	\$0	7	\$687,920	12	\$1,106,008
Obstetrics & Gynecology	0	\$0	1	\$71,165	1	\$59,000
Ophthalmology	0	\$0	2	\$693,168	1	\$35,000
Pathology	0	\$0	0	\$0	14	\$1,881,225
Pathology & Microbiology	4	\$326,880	23	\$3,241,851	10	\$2,289,964
Pediatrics/Developmental Disabilities, Center for	6	\$876,616	23	\$3,504,251	28	\$4,544,736
Pharmacology, Physiology & Neuroscience	1	\$256,024	21	\$4,072,455	23	\$2,186,898
Radiology	1	\$131,662	1	\$131,662	2	\$454,805
Research & Special Projects	1	\$286,000	10	\$722,443	10	\$246,015
Surgery	0	\$0	7	\$734,482	9	\$898,099
Total :	16	\$2,316,464	152	\$21,814,282	175	\$21,307,188
Music, School of	1	\$885,233	3	\$903,528	2	\$175,540
Total :	1	\$885,233	3	\$903,528	2	\$175,540
Nursing, College of						
Academic & Student Affairs	4	\$763,211	11	\$2,427,783	10	\$3,340,925
Administrative & Clinical Nursing	1	\$359,598	4	\$1,212,623	6	\$1,166,108
Family & Community Health Nursing	0	\$0	3	\$945,427	8	\$1,131,200
Total :	5	\$1,122,809	18	\$4,585,833	24	\$5,638,233
Pharmacy, College of						
Basic Pharmaceutical Sciences	0	\$0	15	\$1,483,893	19	\$2,739,444
Palmetto Poison Center	3	\$407,499	4	\$412,499	2	\$216,240
Pharmacy & Health Outcomes Sci.	1	\$13,500	2	\$48,500	3	\$75,000
Pharmacy - (General)	0	\$0	1	\$850	0	\$0
Pharmacy Practice	1	\$7,800	1	\$7,800	6	\$175,795
Total :	5	\$428,799	23	\$1,953,542	30	\$3,206,479
Provost, Office of the						
TRIO Programs	0	\$0	3	\$1,078,453	0	\$0
Total :	0	\$0	3	\$1,078,453	0	\$0
Public Health, Norman J. Arnold School of						
Communication Sciences & Disorders	0	\$0	10	\$701,090	4	\$157,667
Environmental Health Sciences	1	\$193,059	36	\$5,922,558	24	\$2,555,745
Epidemiology & Biostatistics	4	\$1,029,276	44	\$4,977,244	39	\$5,367,974
Exercise Science	2	\$228,323	29	\$3,496,314	30	\$2,145,866
Health Administration	2	\$750,751	33	\$1,418,730	26	\$1,288,643
Health Promotion, Education & Behavior	5	\$2,630,883	49	\$8,680,666	39	\$2,353,611
Health Services & Policy Research, Center for	6	\$548,089	13	\$927,067	11	\$807,068
Prevention Research Center	3	\$1,177,714	20	\$4,611,919	23	\$4,448,964

DEPARTMENT	CURRENT MONTH JUNE - 2003		YEAR TO DATE FY 2003		YEAR TO DATE FY 2002	
Public Health, Norman J. Arnold School of -Dean	1	\$100,000	7	\$2,393,699	4	\$2,490,202
Total :	24	\$6,658,095	241	\$33,129,288	200	\$21,615,740
Regional and Four-Year Campuses						
USC Aiken	4	\$219,958	35	\$5,479,787	24	\$1,994,186
USC Beaufort	1	\$30,000	21	\$3,098,875	18	\$1,836,708
USC Lancaster	0	\$0	6	\$1,112,499	3	\$317,360
USC Salkehatchie	2	\$581,917	14	\$826,781	9	\$701,404
USC Spartanburg	5	\$684,146	31	\$6,209,469	40	\$2,716,366
USC Sumter	1	\$2,000	1	\$2,000	3	\$193,379
USC Union	0	\$0	3	\$560,924	0	\$0
Total :	13	\$1,518,021	111	\$17,290,335	97	\$7,759,403
Research, Vice President for						
Biomedical Research Infrastructure Network (BRIN)	1	\$3,000,000	3	\$5,299,020	0	\$0
NanoCenter	0	\$0	10	\$5,077,400	33	\$9,027,767
Research, Vice President for - (General)	2	\$160,000	2	\$160,000	1	\$1,999,484
Sponsored Programs & Research	1	\$250,000	1	\$250,000	3	\$210,000
Technology Incubator	0	\$0	1	\$160,000	1	\$12,000
Total :	4	\$3,410,000	17	\$10,946,420	38	\$11,249,251
Science and Mathematics, College of						
Baruch Institute	3	\$918,219	37	\$6,093,600	37	\$5,745,473
Biological Sciences	5	\$457,084	72	\$10,845,872	69	\$9,824,723
Chemistry & Biochemistry	2	\$130,932	90	\$12,299,850	62	\$9,898,455
COBRE: Center for Colon Cancer Research	1	\$2,159,743	2	\$2,638,511	0	\$0
Geological Sciences	5	\$368,530	70	\$6,706,359	63	\$6,713,470
Marine Science	0	\$0	0	\$0	1	\$2,625
Mathematics	1	\$11,560	20	\$1,274,907	14	\$728,903
Physics & Astronomy	3	\$48,085	33	\$3,364,504	32	\$4,626,028
Science & Math Administration	1	\$100,000	6	\$2,685,055	4	\$2,707,900
Science Education, Center for	0	\$0	3	\$42,845	5	\$483,077
Statistics	2	\$168,988	24	\$1,304,237	18	\$514,330
Total :	23	\$4,363,141	357	\$47,255,740	305	\$41,244,984
Social Work, College of						
	7	\$124,292	76	\$2,374,845	81	\$2,671,707
Total :	7	\$124,292	76	\$2,374,845	81	\$2,671,707
Student Affairs, Division of						
Housing & Residential Services	0	\$0	0	\$0	1	\$25,000
Student Health	0	\$0	6	\$677,773	2	\$17,491
Student Life	0	\$0	4	\$259,580	4	\$86,411
Total :	0	\$0	10	\$937,353	7	\$128,902
University 101						
	0	\$0	1	\$23,925	0	\$0
Total :	0	\$0	1	\$23,925	0	\$0
University Libraries						
Thomas Cooper Library	1	\$156,098	4	\$624,166	2	\$192,010
Total :	1	\$156,098	4	\$624,166	2	\$192,010

DEPARTMENT	CURRENT MONTH JUNE - 2003		YEAR TO DATE FY 2003		YEAR TO DATE FY 2002	
Report TOTAL :	149	\$45,381,828	1624	\$244,178,051	1489	\$172,907,537

* - Biochemistry represents faculty with a dual appointment to the Department of Chemistry and the School of Medicine. The figures are included in both division totals but only once in the overall total.