

**MEMORANDUM**

To: Harris Pastides, Ph.D.  
 Interim Vice President for Research

From: Anthony M. Boccanfuso, Ph.D.  
 Managing Director

RE: Report of Sponsored Program Activity for January 2003

Date: February 17, 2003

The month of January and year-to-date continue to look positive.

- January 2003 awards totaled \$10.2 million of new funding, an increase of \$2,734,719 from January 2002.
- Total awards (research, service, training) through January reached \$79.8 million (compared to \$61.6 million in FY2002), an increase of twenty-nine (29%) when compared to last year's number.
- Faculty submitted 194 proposals requesting \$31million during January. Thus far in the fiscal year, SPAR has processed 965 proposals requesting \$125.2 million, compared to last year's totals of 865 and \$95 million.

	January FY03	YTD FY02	YTD FY03	YTD Change
Award Dollars	\$10,248,761	\$61,634,744	\$79,780,007	29%
Research Direct Expenditures	4,589,040	31,731,901	32,430,909	2%
Research IDC Expenditures	1,242,310	8,326,999	8,461,058	2%
Proposals Submitted	194	865	965	12%
Proposal Dollars Requested	\$30,995,779	\$94,995,992	\$125,218,272	32%

Notable Changes in Award Activity	July to January FY02	July to January FY03
Business, Moore School of	1,854,167	1,257,684
Engineering & Information Technology	\$9,213,739	\$7,742,612
Families in Society, Institute for	\$1,491,932	\$2,100,720
Liberal Arts, College of	\$3,042,470	\$6,946,200
Medicine, School of	\$8,189,669	\$9,454,921
Public Health, NJA	\$13,788,281	\$18,838,168
Science and Mathematics, College of	\$9,793,793	\$15,568,572

cc: Andrew A. Sorensen, Ph.D.  
 Jerome D. Odom, Ph.D.  
 R. Steven Etheredge  
 Richard Kelly

# January Featured Awards

## Liberal Arts, College of

### Geography

**Hodgson, Michael**

*GIS and Remote Sensing Characterization of South Carolina Bottom Land  
Forests - (KA03)* **\$18,418**  
The Nature Conservancy

### Psychology

**Mactutus, Charles**

*Prenatal Cocaine Exposure and Attentional Dysfunction - (FA16)* **\$235,014**  
USCRF/Cornel University/National Institute on Drug Abuse/NIH

## Medicine, School of

### Family & Preventive Medicine

**Bostick, Roberd**

*Soy Isoflavones and Cell Proliferation - (FA05)* **\$93,924**  
USCRF/National Cancer Institute (NCI)/NIH

## Nursing, College of

### Family & Community Health Nursing

**Andrews, Jeannette**

*Sister to Sister: Helping Low-Income Women Quit Smoking - (FA00)* **\$29,192**  
USCRF/National Institute of Nursing Research (NINR)/NIH

## Regional and Four-Year Campuses

### USC Beaufort

**Yanker, Marge**

*Beaufort Yesterday and Today: The Reconstruction Era - (HL07)* **\$15,000**  
Beaufort County Council

## Science and Mathematics, College of

### Biological Sciences

**Reisman, David**

*Transcriptional and Oncogenic Activities of Mutations in the p53 Tumor  
Suppressor - (KA00)* **\$91,208**  
Elsa U. Pardee Foundation

## Social Work, College of

### Social Work, College of

**Bond, Pamela**

*Social Work Training for DSS Staff and Agents - (FJ03)* **\$3,823,854**  
SC Department of Social Services/HHS

# Sponsored Programs and Research Monthly Report

## SUMMARY OF AWARDS JANUARY - 2003

### By Purpose

Research Awards	\$3,568,378
Training Awards	\$4,541,377
Service Awards	\$2,025,515
Equipment Awards	\$0
Graduate Assistantship Awards	\$113,491

**TOTAL: \$10,248,761**

### By Source

Federal Awards	\$8,565,109
Private Awards	\$1,221,550
State Awards	\$462,102

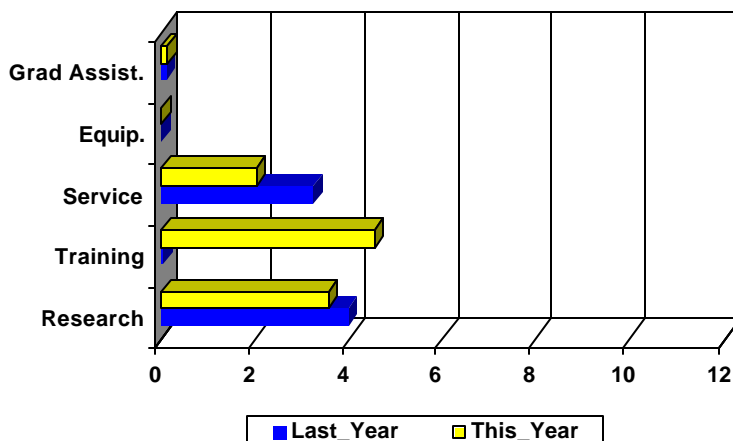
**TOTAL: \$10,248,761**

## COMPARISON OF AMOUNT RECEIVED

JANUARY - 2003 vs. JANUARY - 2002

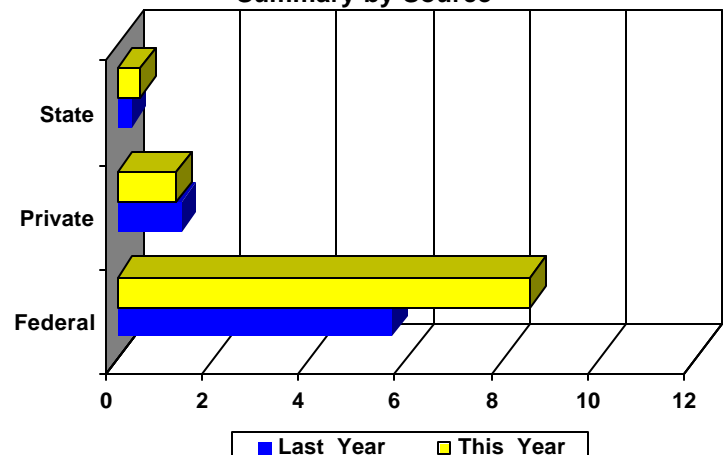
Amounts Received  
(In millions of dollars)

Summary by Purpose



Amounts Received  
(In millions of dollars)

Summary by Source



## AWARDS BY DEPARTMENT

DEPARTMENT	CURRENT MONTH JANUARY - 2003		YEAR TO DATE FY 2003		YEAR TO DATE FY 2002	
<b>Business &amp; Finance</b>						
Recycling & Waste Management	0	\$0	0	\$0	1	\$9,970
<b>Total :</b>	<b>0</b>	<b>\$0</b>	<b>0</b>	<b>\$0</b>	<b>1</b>	<b>\$9,970</b>
<b>Business, Moore School of</b>						
Business Administration - Division of Research	4	\$327,341	26	\$916,044	48	\$1,023,579
Small Business Development Center	3	\$321,640	4	\$341,640	7	\$830,588
<b>Total :</b>	<b>7</b>	<b>\$648,981</b>	<b>30</b>	<b>\$1,257,684</b>	<b>55</b>	<b>\$1,854,167</b>
<b>Education, College of</b>						
Education	1	\$6,842	3	\$121,841	2	\$35,760
Education Leadership & Policies	0	\$0	5	\$215,408	5	\$197,682
Educational Psychology	2	\$67,578	8	\$462,871	11	\$415,207
Instruction & Teacher Education	3	\$401,498	15	\$1,886,790	15	\$1,870,197
Physical Education	0	\$0	1	\$5,000	6	\$60,000
SC Educational Policy Center	0	\$0	0	\$0	1	\$15,500
School Improvement Council Assistance	1	\$138,759	2	\$150,759	3	\$159,805
USC Children's Center	1	\$7,500	1	\$7,500	0	\$0
<b>Total :</b>	<b>8</b>	<b>\$622,177</b>	<b>35</b>	<b>\$2,850,169</b>	<b>43</b>	<b>\$2,754,151</b>
<b>Engineering &amp; Information Technology,</b>						
Chemical Engineering	2	\$90,001	21	\$2,081,109	21	\$2,311,221
Civil & Environmental Engineering	3	\$115,363	12	\$437,008	13	\$1,343,689
Computer Science & Engineering	5	\$199,322	13	\$312,273	7	\$81,708
Electrical Engineering	1	\$7,153	6	\$3,264,578	7	\$2,274,441
Engineering & Information Technology, College of	0	\$0	2	\$141,500	3	\$1,652,495
Mechanical Engineering	1	\$140,602	14	\$1,355,737	18	\$1,107,513
SC Alliance for Minority Participation (SCAMP)	0	\$0	4	\$150,407	6	\$442,672
<b>Total :</b>	<b>12</b>	<b>\$552,441</b>	<b>72</b>	<b>\$7,742,612</b>	<b>75</b>	<b>\$9,213,739</b>
<b>Enrollment Management</b>						
	0	\$0	1	\$37,583	1	\$33,047
<b>Total :</b>	<b>0</b>	<b>\$0</b>	<b>1</b>	<b>\$37,583</b>	<b>1</b>	<b>\$33,047</b>
<b>Environment, School of the</b>						
Earth Sciences & Resources Institute	0	\$0	4	\$27,050	3	\$226,274
Environment, School of the	2	\$63,073	7	\$324,107	8	\$277,020
<b>Total :</b>	<b>2</b>	<b>\$63,073</b>	<b>11</b>	<b>\$351,157</b>	<b>11</b>	<b>\$503,294</b>
<b>Families in Society, Institute for</b>						
	2	\$53,305	11	\$2,100,720	11	\$1,491,932
<b>Total :</b>	<b>2</b>	<b>\$53,305</b>	<b>11</b>	<b>\$2,100,720</b>	<b>11</b>	<b>\$1,491,932</b>
<b>Honors College, South Carolina</b>						
	0	\$0	1	\$4,000	1	\$102,676
<b>Total :</b>	<b>0</b>	<b>\$0</b>	<b>1</b>	<b>\$4,000</b>	<b>1</b>	<b>\$102,676</b>
<b>Hospitality, Retail &amp; Sports Management,</b>						
Hospitality, Retail & Sports Mgmt - (Dean)	0	\$0	0	\$0	1	\$62,500

DEPARTMENT	CURRENT MONTH JANUARY - 2003		YEAR TO DATE FY 2003		YEAR TO DATE FY 2002	
Retailing Studies, Center for	0	\$0	1	\$8,000	1	\$11,429
<b>Total :</b>	<b>0</b>	<b>\$0</b>	<b>1</b>	<b>\$8,000</b>	<b>2</b>	<b>\$73,929</b>
<b>Institutional Planning</b>						
<b>Law, School of</b>						
Law, School of	3	\$119,631	5	\$595,556	11	\$1,052,542
<b>Total :</b>	<b>3</b>	<b>\$119,631</b>	<b>5</b>	<b>\$595,556</b>	<b>11</b>	<b>\$1,052,542</b>
<b>Liberal Arts, College of</b>						
Archaeology & Anthropology, Institute of	3	\$168,492	8	\$322,673	8	\$1,145,349
Art	0	\$0	1	\$1,200	0	\$0
Criminology & Criminal Justice, Department of	0	\$0	1	\$24,447	1	\$32,596
English	0	\$0	0	\$0	2	\$45,000
Geography	2	\$69,747	12	\$572,785	13	\$619,582
Government & International Studies	2	\$4,761	6	\$23,373	6	\$56,106
History	1	\$4,523	12	\$138,461	19	\$53,823
Liberal Arts - (Dean)	0	\$0	0	\$0	1	\$6,000
McKissick Museum	0	\$0	3	\$132,677	3	\$7,750
Naval Science	0	\$0	2	\$4,000	2	\$4,000
Philosophy	0	\$0	2	\$20,900	2	\$55,294
Psychology	2	\$264,248	35	\$2,879,714	14	\$365,920
Public Service & Policy Research, Institute for	3	\$105,601	14	\$2,700,346	14	\$567,254
Religious Studies	0	\$0	1	\$25,000	1	\$50,000
Sociology	0	\$0	1	\$90,424	1	\$6,018
Southern Studies, Institute for	0	\$0	1	\$10,200	1	\$27,778
<b>Total :</b>	<b>13</b>	<b>\$617,372</b>	<b>99</b>	<b>\$6,946,200</b>	<b>88</b>	<b>\$3,042,470</b>
<b>Mass Communications &amp; Information</b>						
Journalism & Mass Communications, School of	3	\$193,897	11	\$657,975	7	\$167,495
Library & Information Sciences, School of	2	\$8,234	6	\$29,696	4	\$53,565
<b>Total :</b>	<b>5</b>	<b>\$202,131</b>	<b>17</b>	<b>\$687,671</b>	<b>11</b>	<b>\$221,060</b>
<b>Medicine, School of</b>						
Basic Science Research	0	\$0	1	\$201,938	1	\$209,244
Biochemistry *	2	\$27,748	18	\$1,846,433	14	\$1,191,107
Cancer Center, South Carolina	5	\$98,540	11	\$197,922	5	\$135,968
Cell & Developmental Biology & Anatomy	0	\$0	12	\$999,628	12	\$937,295
Cell Biology & Neurosciences	0	\$0	0	\$0	5	\$375,368
Family & Preventive Medicine	1	\$93,924	5	\$889,087	6	\$532,273
Health & Safety	0	\$0	0	\$0	1	\$9,600
Internal Medicine	1	\$7,500	14	\$650,256	32	\$961,681
Medicine Library	0	\$0	3	\$244,285	2	\$137,048
Neuropsychiatry	1	\$105,190	6	\$487,296	7	\$116,977
Obstetrics & Gynecology	0	\$0	2	\$130,165	0	\$0
Ophthalmology	1	\$10,742	3	\$22,845	1	\$10,000
Pathology	0	\$0	2	\$25,000	3	\$252,197
Pathology & Microbiology	2	\$76,473	8	\$680,431	4	\$511,016
Pediatrics/Developmental Disabilities, Center for	2	\$1,100	16	\$1,755,710	15	\$1,816,945
Pharmacology, Physiology & Neuroscience	0	\$0	6	\$466,874	1	\$71,500
Radiology	0	\$0	1	\$412,435	1	\$401,974
Research & Special Projects	0	\$0	9	\$402,866	10	\$334,998

DEPARTMENT	CURRENT MONTH JANUARY - 2003		YEAR TO DATE FY 2003		YEAR TO DATE FY 2002	
Surgery	1	\$1,500	4	\$41,750	9	\$184,478
<b>Total :</b>	<b>16</b>	<b>\$422,717</b>	<b>121</b>	<b>\$9,454,921</b>	<b>129</b>	<b>\$8,189,669</b>
<b>Nursing, College of</b>						
Academic & Student Affairs	0	\$0	6	\$572,904	12	\$832,071
Administrative & Clinical Nursing	0	\$0	2	\$97,164	1	\$86,003
Family & Community Health Nursing	1	\$29,192	3	\$262,904	1	\$7,725
<b>Total :</b>	<b>1</b>	<b>\$29,192</b>	<b>11</b>	<b>\$932,972</b>	<b>14</b>	<b>\$925,799</b>
<b>Pharmacy, College of</b>						
Basic Pharmaceutical Sciences	0	\$0	5	\$363,529	4	\$508,204
Palmetto Poison Center	0	\$0	1	\$210,990	2	\$285,881
Pharmacy & Health Outcomes Sci.	0	\$0	1	\$14,500	2	\$40,243
Pharmacy Practice	0	\$0	2	\$23,255	3	\$136,085
<b>Total :</b>	<b>0</b>	<b>\$0</b>	<b>9</b>	<b>\$612,274</b>	<b>11</b>	<b>\$970,413</b>
<b>Provost, Office of the</b>						
Provost, Office of the	0	\$0	1	\$4,335	0	\$0
TRIO Programs	0	\$0	5	\$1,253,694	6	\$1,300,187
<b>Total :</b>	<b>0</b>	<b>\$0</b>	<b>6</b>	<b>\$1,258,029</b>	<b>6</b>	<b>\$1,300,187</b>
<b>Public Health, Norman J. Arnold School of</b>						
Communication Sciences & Disorders	1	\$4,000	2	\$11,141	1	\$7,917
Environmental Health Sciences	1	\$69,044	29	\$1,574,256	44	\$1,803,879
Epidemiology & Biostatistics	3	\$129,702	32	\$2,645,211	26	\$2,770,998
Exercise Science	1	\$357,398	18	\$1,665,011	10	\$819,437
Health Administration	5	\$30,582	28	\$943,030	19	\$650,063
Health Promotion, Education & Behavior	5	\$26,190	40	\$2,497,983	30	\$523,379
Health Services & Policy Research, Center for	2	\$135,796	7	\$379,982	10	\$931,452
Prevention Research Center	1	\$50,000	19	\$3,453,541	18	\$2,806,396
Public Health, Norman J. Arnold School of - (Dean)	1	\$67,763	9	\$5,668,013	4	\$3,474,760
<b>Total :</b>	<b>20</b>	<b>\$870,475</b>	<b>184</b>	<b>\$18,838,168</b>	<b>162</b>	<b>\$13,788,281</b>
<b>Regional and Four-Year Campuses</b>						
USC Aiken	2	\$124,453	14	\$1,030,240	17	\$897,851
USC Beaufort	1	\$15,000	6	\$289,120	8	\$207,569
USC Lancaster	1	\$17,718	4	\$485,689	4	\$260,153
USC Salkehatchie	2	\$13,645	5	\$363,645	4	\$512,747
USC Spartanburg	9	\$392,919	40	\$1,463,694	48	\$1,381,349
USC Sumter	0	\$0	2	\$260,079	4	\$250,208
USC Union	0	\$0	2	\$237,948	2	\$229,471
<b>Total :</b>	<b>15</b>	<b>\$563,735</b>	<b>73</b>	<b>\$4,130,415</b>	<b>87</b>	<b>\$3,739,348</b>
<b>Research, Vice President for</b>						
Biomedical Research Infrastructure Network (BRIN)	0	\$0	6	\$1,087,993	0	\$0
NanoCenter	0	\$0	6	\$763,388	4	\$364,139
Research, Vice President for - (General)	0	\$0	0	\$0	3	\$431,342
Sponsored Programs & Research	0	\$0	1	\$24,000	1	\$10,683
Technology Incubator	0	\$0	1	\$160,000	0	\$0
<b>Total :</b>	<b>0</b>	<b>\$0</b>	<b>14</b>	<b>\$2,035,381</b>	<b>8</b>	<b>\$806,164</b>

DEPARTMENT	CURRENT MONTH JANUARY - 2003		YEAR TO DATE FY 2003		YEAR TO DATE FY 2002	
<b>Science and Mathematics, College of</b>						
Baruch Institute	3	\$222,200	21	\$4,646,157	15	\$1,447,201
Biological Research & Technology, Institute for	0	\$0	0	\$0	2	\$3,300
Biological Sciences	4	\$515,329	26	\$2,161,473	24	\$2,497,167
Chemistry & Biochemistry	5	\$166,748	31	\$2,521,296	31	\$2,525,484
COBRE: Center for Colon Cancer Research	0	\$0	11	\$2,366,028	0	\$0
Geological Sciences	3	\$162,059	32	\$1,902,085	35	\$1,480,668
Mathematics	0	\$0	2	\$218,001	4	\$247,551
Physics & Astronomy	5	\$254,084	15	\$764,483	5	\$590,878
Science & Math Administration	0	\$0	5	\$665,091	6	\$743,043
Science Education, Center for	0	\$0	1	\$12,400	1	\$12,400
Statistics	1	\$12,029	13	\$311,558	9	\$246,101
<b>Total :</b>	<b>21</b>	<b>\$1,332,449</b>	<b>157</b>	<b>\$15,568,572</b>	<b>132</b>	<b>\$9,793,793</b>
<b>Social Work, College of</b>						
	7	\$4,172,570	44	\$6,070,147	42	\$1,759,749
<b>Total :</b>	<b>7</b>	<b>\$4,172,570</b>	<b>44</b>	<b>\$6,070,147</b>	<b>42</b>	<b>\$1,759,749</b>
<b>Student Affairs, Division of</b>						
Student Health	1	\$6,260	2	\$11,932	2	\$83,122
Student Life	0	\$0	2	\$132,277	4	\$158,199
<b>Total :</b>	<b>1</b>	<b>\$6,260</b>	<b>4</b>	<b>\$144,209</b>	<b>6</b>	<b>\$241,321</b>
<b>University Libraries</b>						
Thomas Cooper Library	0	\$0	0	\$0	4	\$958,150
<b>Total :</b>	<b>0</b>	<b>\$0</b>	<b>0</b>	<b>\$0</b>	<b>4</b>	<b>\$958,150</b>
<b>Report TOTAL :</b>	<b>131</b>	<b>\$10,248,761</b>	<b>888</b>	<b>\$79,780,007</b>	<b>897</b>	<b>\$61,634,744</b>

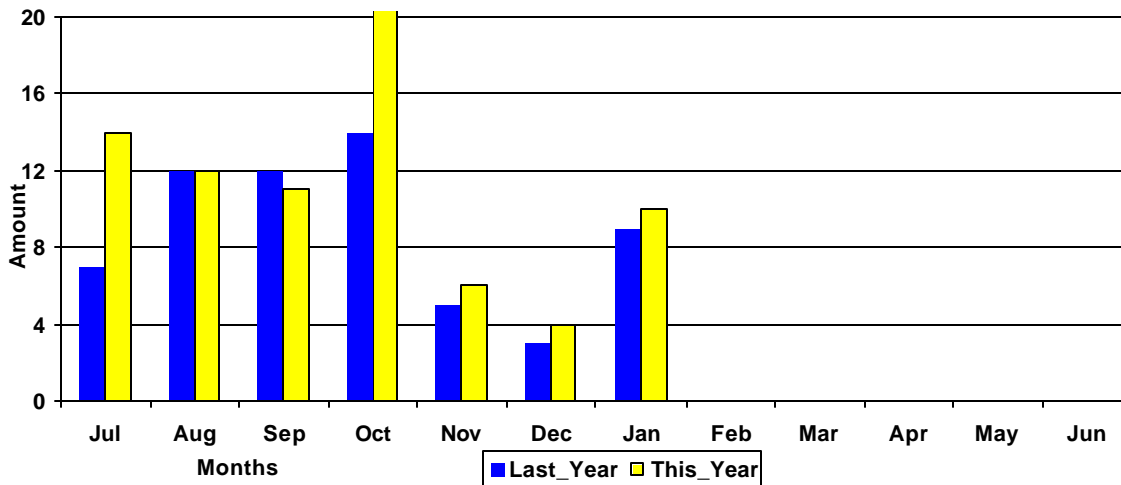
\* - Biochemistry represents faculty with a dual appointment to the Department of Chemistry and the School of Medicine. The figures are included in both division totals but only once in the overall total.

# Funding Agency Comparison Report

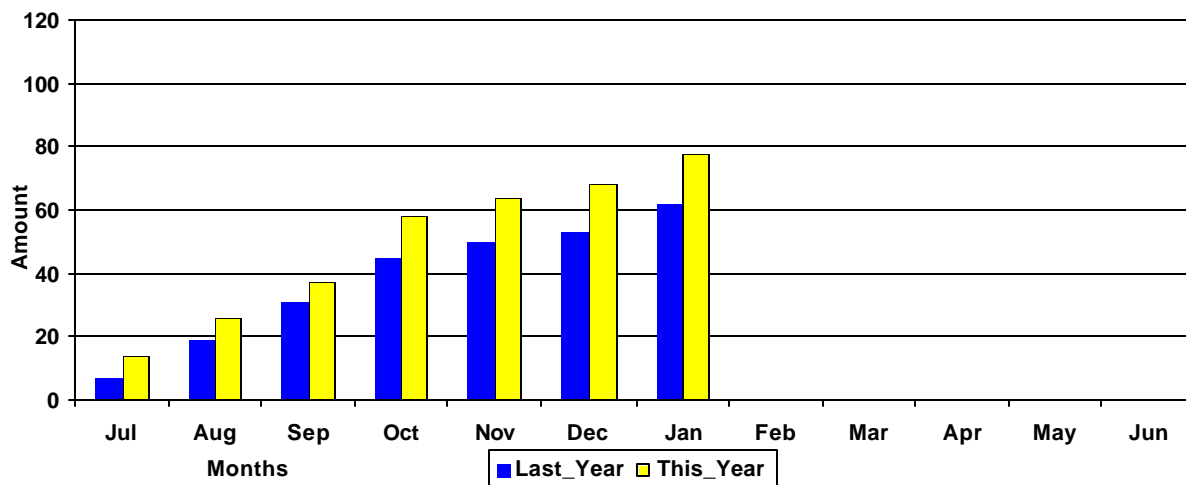
Year-To-Date -JANUARY - 2003

	FISCAL YEAR - 2003		FISCAL YEAR - 2002		YTD CHANGE
<b>NSF Awards</b>	56	\$5,132,123	52	\$3,976,419	23%
<b>NIH Awards</b>	99	\$11,736,837	67	\$5,672,156	107%
<b>Dept. Of Defense Awards</b>	44	\$7,212,925	35	\$3,496,596	106%
<b>Dept. Of Education Awards</b>	46	\$6,899,417	54	\$6,711,017	3%
<b>Dept. Of Energy Awards</b>	33	\$3,449,921	34	\$5,803,429	(41%)
<b>State and Municipalities Awards</b>	112	\$3,436,929	126	\$6,286,852	(45%)
<b>Non Profit Awards</b>	119	\$3,827,613	140	\$4,926,306	(22%)
<b>Business and Industry Awards</b>	104	\$1,439,691	116	\$1,911,589	(25%)

Amounts Awarded  
(In millions of dollars)



Cumulative Amounts Awarded  
(In millions of dollars)



# PROPOSALS BY DEPARTMENT

DEPARTMENT	CURRENT MONTH JANUARY - 2003		YEAR TO DATE FY 2003		YEAR TO DATE FY 2002	
<b>Business, Moore School of</b>						
Business Administration - Division of Research	4	\$223,893	24	\$458,462	42	\$822,474
Small Business Development Center	0	\$0	4	\$1,372,178	5	\$2,431,985
<b>Total :</b>	<b>4</b>	<b>\$223,893</b>	<b>28</b>	<b>\$1,830,640</b>	<b>47</b>	<b>\$3,254,459</b>
<b>Education, College of</b>						
Education	0	\$0	0	\$0	2	\$192,644
Education Leadership & Policies	0	\$0	2	\$187,292	7	\$290,331
Educational Psychology	0	\$0	5	\$162,849	14	\$748,700
Instruction & Teacher Education	1	\$2,389,930	16	\$3,430,298	7	\$310,843
Physical Education	0	\$0	0	\$0	5	\$57,000
SC Educational Policy Center	0	\$0	0	\$0	2	\$16,500
School Improvement Council Assistance	0	\$0	1	\$12,000	1	\$25,250
USC Children's Center	0	\$0	2	\$36,500	0	\$0
<b>Total :</b>	<b>1</b>	<b>\$2,389,930</b>	<b>26</b>	<b>\$3,828,939</b>	<b>38</b>	<b>\$1,641,268</b>
<b>Engineering &amp; Information Technology,</b>						
Chemical Engineering	9	\$1,038,881	36	\$6,244,811	19	\$1,575,631
Civil & Environmental Engineering	3	\$198,293	19	\$1,965,135	7	\$457,660
Computer Science & Engineering	2	\$19,317	31	\$2,924,749	22	\$2,476,830
Electrical Engineering	2	\$152,799	18	\$5,450,388	13	\$6,019,325
Engineering & Information Technology, College of	0	\$0	3	\$196,004	2	\$161,836
Mechanical Engineering	3	\$464,200	18	\$1,949,977	21	\$4,183,876
SC Alliance for Minority Participation (SCAMP)	0	\$0	1	\$16,000	3	\$1,422,672
<b>Total :</b>	<b>19</b>	<b>\$1,873,490</b>	<b>126</b>	<b>\$18,747,064</b>	<b>87</b>	<b>\$16,297,830</b>
<b>English Program for Internationals</b>						
English Program for Internationals	1	\$280,140	1	\$280,140	1	\$265,492
<b>Total :</b>	<b>1</b>	<b>\$280,140</b>	<b>1</b>	<b>\$280,140</b>	<b>1</b>	<b>\$265,492</b>
<b>Environment, School of the</b>						
Earth Sciences & Resources Institute	1	\$145,379	5	\$352,584	7	\$2,021,909
Environment, School of the	3	\$232,108	13	\$971,286	14	\$1,274,784
<b>Total :</b>	<b>4</b>	<b>\$377,487</b>	<b>18</b>	<b>\$1,323,870</b>	<b>21</b>	<b>\$3,296,693</b>
<b>Families in Society, Institute for</b>						
	4	\$483,689	16	\$2,552,223	14	\$1,379,132
<b>Total :</b>	<b>4</b>	<b>\$483,689</b>	<b>16</b>	<b>\$2,552,223</b>	<b>14</b>	<b>\$1,379,132</b>
<b>Honors College, South Carolina</b>						
	0	\$0	3	\$691,179	2	\$79,482
<b>Total :</b>	<b>0</b>	<b>\$0</b>	<b>3</b>	<b>\$691,179</b>	<b>2</b>	<b>\$79,482</b>
<b>Hospitality, Retail &amp; Sports Management,</b>						
Administrative Information Management	0	\$0	1	\$244,450	0	\$0
Hospitality, Retail & Sports Mgmt - (Dean)	0	\$0	1	\$38,000	1	\$25,000
Retailing Studies, Center for	1	\$1,038,595	2	\$1,040,595	0	\$0
<b>Total :</b>	<b>1</b>	<b>\$1,038,595</b>	<b>4</b>	<b>\$1,323,045</b>	<b>1</b>	<b>\$25,000</b>

DEPARTMENT	CURRENT MONTH JANUARY - 2003		YEAR TO DATE FY 2003		YEAR TO DATE FY 2002	
<b>Institutional Planning</b>						
<b>Law Enforcement &amp; Safety</b>	0	\$0	0	\$0	1	\$21,600
<b>Total :</b>	<b>0</b>	<b>\$0</b>	<b>0</b>	<b>\$0</b>	<b>1</b>	<b>\$21,600</b>
<b>Law, School of</b>						
Law, School of	4	\$668,312	9	\$1,122,518	10	\$1,460,772
<b>Total :</b>	<b>4</b>	<b>\$668,312</b>	<b>9</b>	<b>\$1,122,518</b>	<b>10</b>	<b>\$1,460,772</b>
<b>Liberal Arts, College of</b>						
Anthropology	0	\$0	1	\$4,200	1	\$18,525
Archaeology & Anthropology, Institute of	3	\$1,315,132	8	\$2,155,458	9	\$971,442
Art	0	\$0	1	\$1,200	1	\$20,100
Criminology & Criminal Justice, Department of	1	\$53,473	1	\$53,473	0	\$0
English	0	\$0	0	\$0	3	\$56,790
Geography	5	\$222,936	17	\$1,249,481	12	\$560,242
Government & International Studies	1	\$55,376	7	\$144,366	7	\$142,207
History	1	\$4,523	8	\$166,500	13	\$185,203
International Studies, Institute of	1	\$214,608	3	\$431,896	3	\$407,832
Languages, Literatures, and Cultures, Department	0	\$0	0	\$0	1	\$7,533
McKissick Museum	1	\$52,571	4	\$109,849	4	\$131,320
Philosophy	0	\$0	1	\$450,331	1	\$10,000
Psychology	2	\$4,383,366	34	\$7,640,675	19	\$1,779,067
Public Service & Policy Research, Institute for	2	\$125,275	11	\$561,660	12	\$2,322,583
Religious Studies	0	\$0	1	\$25,000	1	\$50,000
Sociology	3	\$168,597	6	\$401,804	4	\$210,739
Southern Studies, Institute for	0	\$0	1	\$10,200	1	\$28,968
<b>Total :</b>	<b>20</b>	<b>\$6,595,857</b>	<b>104</b>	<b>\$13,406,093</b>	<b>92</b>	<b>\$6,902,551</b>
<b>Mass Communications &amp; Information</b>						
Journalism & Mass Communications, School of	2	\$191,397	10	\$655,475	8	\$207,091
Library & Information Sciences, School of	2	\$8,234	5	\$26,831	0	\$0
Mass Communications & Information Studies, Colleg	1	\$89,954	1	\$89,954	0	\$0
<b>Total :</b>	<b>5</b>	<b>\$289,585</b>	<b>16</b>	<b>\$772,260</b>	<b>8</b>	<b>\$207,091</b>
<b>Medicine, School of</b>						
Biochemistry *	0	\$0	0	\$0	1	\$316,495
Cancer Center, South Carolina	3	\$59,000	9	\$158,382	3	\$105,968
Cell & Developmental Biology & Anatomy	8	\$935,539	14	\$2,211,004	10	\$1,232,558
Cell Biology & Neurosciences	0	\$0	0	\$0	1	\$108,000
Family & Preventive Medicine	1	\$225,000	7	\$1,005,327	8	\$1,395,436
Internal Medicine	0	\$0	6	\$860,662	13	\$524,541
Medicine, School of - (Dean)	0	\$0	0	\$0	1	\$27,493
Medicine, School of - (Graduate Program)	0	\$0	0	\$0	1	\$17,680
Neuropsychiatry	1	\$154,550	3	\$247,372	11	\$1,064,272
Obstetrics & Gynecology	0	\$0	1	\$71,165	1	\$59,000
Ophthalmology	0	\$0	1	\$30,200	1	\$35,000
Pathology	0	\$0	0	\$0	11	\$1,582,579
Pathology & Microbiology	3	\$710,993	12	\$1,639,236	7	\$1,647,387
Pediatrics/Developmental Disabilities, Center for	3	\$858,540	12	\$1,854,762	15	\$2,201,080
Pharmacology, Physiology & Neuroscience	4	\$395,225	18	\$3,186,901	16	\$1,280,007

DEPARTMENT	CURRENT MONTH JANUARY - 2003		YEAR TO DATE FY 2003		YEAR TO DATE FY 2002	
Research & Special Projects	1	\$6,261	6	\$306,427	5	\$71,975
Surgery	1	\$84,616	4	\$215,181	5	\$389,523
<b>Total :</b>	<b>25</b>	<b>\$3,429,724</b>	<b>93</b>	<b>\$11,786,619</b>	<b>110</b>	<b>\$12,058,994</b>
<b>Music, School of</b>	0	\$0	0	\$0	1	\$139,603
<b>Total :</b>	<b>0</b>	<b>\$0</b>	<b>0</b>	<b>\$0</b>	<b>1</b>	<b>\$139,603</b>
<b>Nursing, College of</b>						
Academic & Student Affairs	2	\$735,888	5	\$1,333,879	4	\$2,104,641
Administrative & Clinical Nursing	0	\$0	3	\$851,210	3	\$1,055,473
Family & Community Health Nursing	0	\$0	3	\$945,427	6	\$756,182
<b>Total :</b>	<b>2</b>	<b>\$735,888</b>	<b>11</b>	<b>\$3,130,516</b>	<b>13</b>	<b>\$3,916,296</b>
<b>Pharmacy, College of</b>						
Basic Pharmaceutical Sciences	2	\$222,620	12	\$1,041,809	8	\$1,255,785
Pharmacy & Health Outcomes Sci.	0	\$0	0	\$0	1	\$30,000
Pharmacy Practice	0	\$0	0	\$0	3	\$136,085
<b>Total :</b>	<b>2</b>	<b>\$222,620</b>	<b>12</b>	<b>\$1,041,809</b>	<b>12</b>	<b>\$1,421,870</b>
<b>Provost, Office of the</b>						
TRIO Programs	0	\$0	3	\$1,078,453	0	\$0
<b>Total :</b>	<b>0</b>	<b>\$0</b>	<b>3</b>	<b>\$1,078,453</b>	<b>0</b>	<b>\$0</b>
<b>Public Health, Norman J. Arnold School of</b>						
Communication Sciences & Disorders	3	\$340,397	6	\$424,288	1	\$7,917
Environmental Health Sciences	3	\$199,593	14	\$1,975,151	17	\$1,267,388
Epidemiology & Biostatistics	7	\$687,422	24	\$1,346,600	19	\$1,300,005
Exercise Science	10	\$218,933	20	\$2,230,524	22	\$1,409,486
Health Administration	5	\$27,638	26	\$657,174	17	\$228,414
Health Promotion, Education & Behavior	2	\$219,003	35	\$2,668,692	24	\$983,798
Health Services & Policy Research, Center for	2	\$89,027	4	\$193,121	5	\$519,449
Prevention Research Center	2	\$759,021	11	\$1,465,978	6	\$978,674
Public Health, Norman J. Arnold School of - (Dean)	0	\$0	6	\$2,293,699	0	\$0
<b>Total :</b>	<b>34</b>	<b>\$2,541,034</b>	<b>146</b>	<b>\$13,255,227</b>	<b>111</b>	<b>\$6,695,131</b>
<b>Regional and Four-Year Campuses</b>						
USC Aiken	2	\$65,000	19	\$3,375,708	18	\$1,440,294
USC Beaufort	2	\$1,197,600	13	\$4,271,983	8	\$192,551
USC Lancaster	0	\$0	6	\$1,112,499	3	\$317,360
USC Salkehatchie	1	\$59,470	9	\$167,416	4	\$355,543
USC Spartanburg	2	\$238,000	16	\$3,798,356	26	\$1,505,809
USC Sumter	0	\$0	0	\$0	2	\$192,079
USC Union	0	\$0	2	\$496,281	0	\$0
<b>Total :</b>	<b>7</b>	<b>\$1,560,070</b>	<b>65</b>	<b>\$13,222,243</b>	<b>61</b>	<b>\$4,003,636</b>
<b>Research, Vice President for</b>						
Biomedical Research Infrastructure Network (BRIN)	0	\$0	1	\$2,000,000	0	\$0
NanoCenter	0	\$0	6	\$3,815,978	20	\$7,225,769
Sponsored Programs & Research	0	\$0	0	\$0	1	\$60,000
Technology Incubator	0	\$0	1	\$160,000	0	\$0

DEPARTMENT	CURRENT MONTH JANUARY - 2003		YEAR TO DATE FY 2003		YEAR TO DATE FY 2002	
<b>Total :</b>	<b>0</b>	<b>\$0</b>	<b>8</b>	<b>\$5,975,978</b>	<b>21</b>	<b>\$7,285,769</b>
<b>Science and Mathematics, College of</b>						
Baruch Institute	3	\$174,125	15	\$1,367,119	20	\$4,224,600
Biological Sciences	15	\$2,502,036	48	\$7,470,074	39	\$3,895,598
Chemistry & Biochemistry	24	\$2,218,409	59	\$7,266,590	34	\$6,464,000
Geological Sciences	6	\$768,041	39	\$4,464,554	30	\$2,765,209
Mathematics	1	\$53,717	18	\$1,106,511	11	\$434,851
Physics & Astronomy	1	\$18,000	22	\$2,918,304	19	\$3,318,895
Science & Math Administration	1	\$1,915,935	4	\$2,577,055	2	\$2,190,461
Science Education, Center for	0	\$0	2	\$34,845	4	\$325,041
Statistics	4	\$148,632	20	\$978,113	12	\$252,573
<b>Total :</b>	<b>55</b>	<b>\$7,798,895</b>	<b>227</b>	<b>\$28,183,165</b>	<b>171</b>	<b>\$23,871,228</b>
<b>Social Work, College of</b>						
	4	\$382,670	42	\$1,497,765	39	\$932,544
<b>Total :</b>	<b>4</b>	<b>\$382,670</b>	<b>42</b>	<b>\$1,497,765</b>	<b>39</b>	<b>\$932,544</b>
<b>Student Affairs, Division of</b>						
Housing & Residential Services	0	\$0	0	\$0	1	\$25,000
Student Health	1	\$10,000	3	\$41,788	1	\$13,531
Student Life	0	\$0	1	\$4,271	2	\$27,515
<b>Total :</b>	<b>1</b>	<b>\$10,000</b>	<b>4</b>	<b>\$46,059</b>	<b>4</b>	<b>\$66,046</b>
<b>University 101</b>						
	0	\$0	1	\$23,925	0	\$0
<b>Total :</b>	<b>0</b>	<b>\$0</b>	<b>1</b>	<b>\$23,925</b>	<b>0</b>	<b>\$0</b>
<b>University Libraries</b>						
Thomas Cooper Library	1	\$93,900	2	\$98,543	1	\$90,000
<b>Total :</b>	<b>1</b>	<b>\$93,900</b>	<b>2</b>	<b>\$98,543</b>	<b>1</b>	<b>\$90,000</b>
<b>Report TOTAL :</b>	<b>194</b>	<b>\$30,995,779</b>	<b>965</b>	<b>\$125,218,272</b>	<b>865</b>	<b>\$94,995,992</b>

\* - Biochemistry represents faculty with a dual appointment to the Department of Chemistry and the School of Medicine. The figures are included in both division totals but only once in the overall total.