



**MEMORANDUM**

To: William C. Harris, Ph.D.  
Director

From: Anthony M. Boccanfuso, Ph.D.  
Managing Director

RE: Report of Sponsored Program Activity for January 2002

Date: February 11, 2002

The University received awards totaling \$7.5 million during the month, a 50% decrease from last January (\$15.0 million). **Thus far in the fiscal year, award dollars are 21.5% behind last year, \$77.8 million vs. \$61.0 million.**

Faculty submitted 158 proposals requesting \$21.8 million during January. Thus far in the fiscal year, SPAR has processed 877 proposals requesting \$97.9 million, compared to last year's totals of 885 and \$106.8 million.

	January FY02	YTD FY01	YTD FY02	YTD Change
Award Dollars	\$7,514,042	\$77,765,657	\$60,994,155	(-21.5%)
Proposals Submitted	158	885	877	(-.9%)
Proposal Dollars Requested	\$21,755,876	\$106,794,238	\$97,925,164	(-8.3%)

cc: K. McCoy  
R. Steven Etheredge  
J. Odom

# Sponsored Programs and Research Monthly Report

## SUMMARY OF AWARDS JANUARY - 2002

### By Purpose

Research Awards - SPAR	\$3,073,597
Research Awards - USCRF	\$1,737,577
Training Awards	\$35,610
Service Awards	\$2,559,461
Equipment Awards	\$618
Graduate Assistantship Awards	\$107,179
<b>TOTAL:</b>	<b>\$7,514,042</b>

### By Source

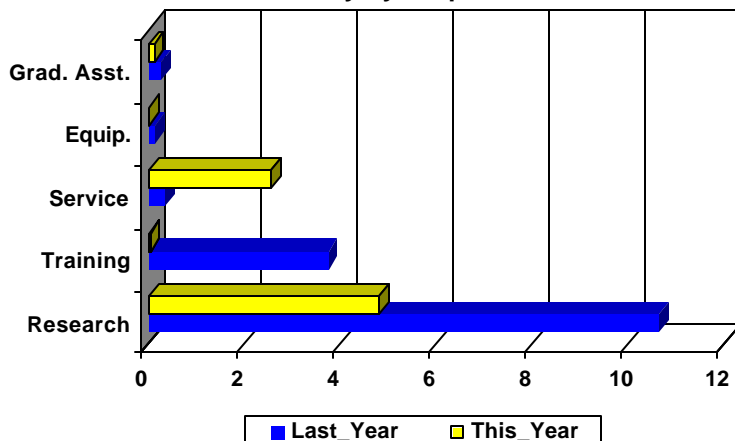
Federal Awards - SPAR	\$4,786,938
Federal Awards - USCRF	\$1,099,707
Private Awards - SPAR	\$647,505
Private Awards - USCRF	\$678,464
State Awards	\$301,428
<b>TOTAL:</b>	<b>\$7,514,042</b>

## COMPARISON OF AMOUNT RECEIVED

JANUARY - 2002 vs. JANUARY - 2001

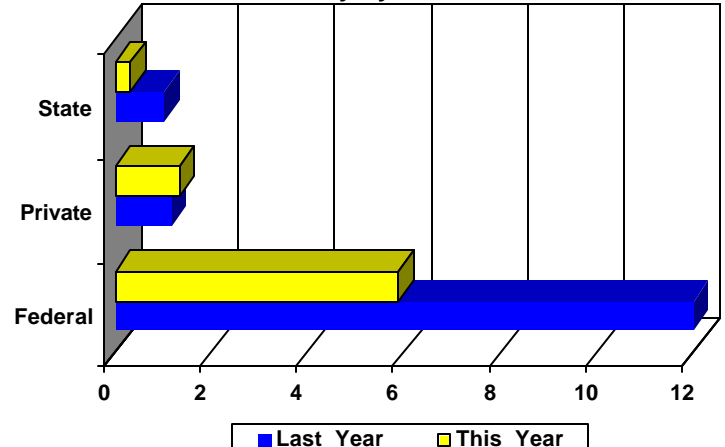
Amounts Received  
(In millions of dollars)

Summary by Purpose



Amounts Received  
(In millions of dollars)

Summary by Source



## AWARDS BY DEPARTMENT

DEPARTMENT	CURRENT MONTH JANUARY - 2002		YEAR TO DATE FY 2002		YEAR TO DATE FY 2001	
<b>Business and Finance</b>						
Campus Services	0	\$0	0	\$0	2	\$12,000
Recycling & Waste Management	0	\$0	1	\$9,970	0	\$0
<b>Total :</b>	<b>0</b>	<b>\$0</b>	<b>1</b>	<b>\$9,970</b>	<b>2</b>	<b>\$12,000</b>
<b>College of Criminal Justice</b>						
	0	\$0	1	\$32,596	8	\$334,428
<b>Total :</b>	<b>0</b>	<b>\$0</b>	<b>1</b>	<b>\$32,596</b>	<b>8</b>	<b>\$334,428</b>
<b>College of Education</b>						
Education	1	\$8,260	2	\$35,760	1	\$6,054
Education Leadership & Policies	0	\$0	5	\$211,929	13	\$567,353
Educational Psychology	1	\$8,500	11	\$415,207	6	\$477,633
Instruction & Teacher Education	2	\$17,100	15	\$1,869,641	8	\$1,180,377
Office of Research	0	\$0	0	\$0	1	\$14,295
Physical Education	1	\$3,000	6	\$60,000	1	\$122,200
SC Educational Policy Center	0	\$0	1	\$15,500	5	\$352,869
School Improvement Council Assistance	1	\$148,805	3	\$159,805	0	\$0
<b>Total :</b>	<b>6</b>	<b>\$185,665</b>	<b>43</b>	<b>\$2,767,842</b>	<b>35</b>	<b>\$2,720,781</b>
<b>College of Engineering &amp; Information</b>						
Chemical Engineering	0	\$0	21	\$2,304,823	23	\$1,443,601
Civil & Environmental Engineering	2	\$208,154	11	\$1,135,535	10	\$1,351,119
Computer Science & Engineering	0	\$0	7	\$81,708	19	\$307,073
Electrical Engineering	0	\$0	7	\$2,274,441	11	\$11,062,700
Engineering & Information Technology, College of	0	\$0	3	\$1,652,495	3	\$273,862
Mechanical Engineering	4	\$188,446	17	\$954,984	23	\$1,913,960
SCAMP	0	\$0	6	\$442,672	4	\$902,200
<b>Total :</b>	<b>6</b>	<b>\$396,600</b>	<b>72</b>	<b>\$8,846,658</b>	<b>93</b>	<b>\$17,254,515</b>
<b>College of Hospitality, Retail &amp; Sports</b>						
Center For Retailing Studies	0	\$0	1	\$11,429	0	\$0
Hospitality, Retail & Sports Mgmt - Dean's Office	0	\$0	1	\$62,500	3	\$124,500
Sport Administration	0	\$0	0	\$0	1	\$13,000
<b>Total :</b>	<b>0</b>	<b>\$0</b>	<b>2</b>	<b>\$73,929</b>	<b>4</b>	<b>\$137,500</b>
<b>College of Journalism &amp; Mass</b>						
	0	\$0	7	\$167,495	17	\$361,841
<b>Total :</b>	<b>0</b>	<b>\$0</b>	<b>7</b>	<b>\$167,495</b>	<b>17</b>	<b>\$361,841</b>
<b>College of Liberal Arts</b>						
Anthropology	0	\$0	0	\$0	2	\$19,314
Archaeology & Anthropology, Institute of	1	\$500,000	8	\$1,145,349	6	\$441,095
Art	0	\$0	0	\$0	1	\$2,500
English	0	\$0	2	\$45,000	3	\$13,485
Geography	1	\$7,568	13	\$619,582	15	\$820,488
Government & International Studies	2	\$6,808	6	\$56,106	11	\$67,767
History	3	\$5,517	19	\$53,823	22	\$131,613
Institute for Southern Studies	0	\$0	1	\$27,778	2	\$100,000
International Studies, Institute of	0	\$0	0	\$0	2	\$128,997

DEPARTMENT	CURRENT MONTH JANUARY - 2002		YEAR TO DATE FY 2002		YEAR TO DATE FY 2001	
Liberal Arts Dean's Office	0	\$0	1	\$6,000	0	\$0
McKissick Museum	0	\$0	3	\$7,750	3	\$67,859
Naval Science	0	\$0	2	\$4,000	3	\$5,600
Philosophy	0	\$0	2	\$29,644	2	\$36,900
Psychology	0	\$0	14	\$367,045	32	\$1,523,952
Public Service & Policy Research, Institute for	2	\$22,482	14	\$567,254	22	\$743,202
Religious Studies	0	\$0	1	\$50,000	0	\$0
Sociology	0	\$0	1	\$6,018	2	\$168,976
Trio Programs	0	\$0	6	\$1,263,162	5	\$1,069,473
<b>Total :</b>	<b>9</b>	<b>\$542,375</b>	<b>93</b>	<b>\$4,248,511</b>	<b>133</b>	<b>\$5,341,221</b>
<b>College of Library &amp; Information Science</b>	0	\$0	4	\$53,565	5	\$48,642
<b>Total :</b>	<b>0</b>	<b>\$0</b>	<b>4</b>	<b>\$53,565</b>	<b>5</b>	<b>\$48,642</b>
<b>College of Nursing</b>						
Academic & Student Affairs	0	\$0	12	\$852,275	8	\$755,598
Administrative & Clinical Nursing	0	\$0	1	\$86,003	2	\$92,144
Family & Community Health Nursing	0	\$0	1	\$7,725	5	\$241,841
<b>Total :</b>	<b>0</b>	<b>\$0</b>	<b>14</b>	<b>\$946,003</b>	<b>15</b>	<b>\$1,089,583</b>
<b>College of Pharmacy</b>						
Basic Pharmaceutical Sciences	1	\$378,063	4	\$510,287	6	\$243,843
Clinical Pharmacy	0	\$0	3	\$136,085	5	\$125,000
Palmetto Poison Center	0	\$0	2	\$285,881	3	\$85,000
Pharmacy Practice	0	\$0	2	\$40,243	9	\$238,197
<b>Total :</b>	<b>1</b>	<b>\$378,063</b>	<b>11</b>	<b>\$972,496</b>	<b>23</b>	<b>\$692,040</b>
<b>College of Science and Math</b>						
Baruch Institute	2	\$72,250	15	\$1,457,740	16	\$1,253,557
Biological Research & Technology, Institute for	0	\$0	2	\$3,300	0	\$0
Biological Sciences	4	\$365,996	24	\$2,497,167	28	\$2,013,000
Center For Science Education	0	\$0	1	\$12,400	2	\$35,279
Chemistry & Biochemistry	4	\$369,839	29	\$2,405,731	45	\$3,351,969
Computer Science (moved to Engineering)	0	\$0	0	\$0	1	\$19,266
EPSCoR (moved to VP for Research)	0	\$0	0	\$0	5	\$211,885
Geological Sciences	3	\$164,039	36	\$1,810,804	24	\$1,312,721
Mathematics	1	\$45,882	3	\$201,669	9	\$562,928
Physics & Astronomy	1	\$143,808	5	\$590,878	16	\$1,494,053
Science & Math Administration	0	\$0	6	\$743,043	6	\$904,500
Statistics	2	\$10,110	9	\$246,101	12	\$403,282
<b>Total :</b>	<b>17</b>	<b>\$1,171,924</b>	<b>130</b>	<b>\$9,968,833</b>	<b>164</b>	<b>\$11,562,440</b>
<b>College of Social Work</b>	3	\$88,669	43	\$1,768,771	48	\$5,720,584
<b>Total :</b>	<b>3</b>	<b>\$88,669</b>	<b>43</b>	<b>\$1,768,771</b>	<b>48</b>	<b>\$5,720,584</b>
<b>Darla Moore School of Business</b>						
Business Administration - Division Of Research	8	\$226,733	48	\$1,023,639	44	\$1,088,994
Small Business Development Center	4	\$643,088	7	\$830,588	7	\$948,571
<b>Total :</b>	<b>12</b>	<b>\$869,821</b>	<b>55</b>	<b>\$1,854,227</b>	<b>51</b>	<b>\$2,037,565</b>

DEPARTMENT	CURRENT MONTH JANUARY - 2002		YEAR TO DATE FY 2002		YEAR TO DATE FY 2001	
<b>Division of Student Affairs</b>						
International Programs for Students	0	\$0	0	\$0	1	\$3,000
Student Health	0	\$0	2	\$83,122	0	\$0
Student Life	1	\$4,247	4	\$158,199	2	\$211,571
<b>Total :</b>	<b>1</b>	<b>\$4,247</b>	<b>6</b>	<b>\$241,321</b>	<b>3</b>	<b>\$214,571</b>
<b>Enrollment Management</b>						
	0	\$0	1	\$33,047	0	\$0
<b>Total :</b>	<b>0</b>	<b>\$0</b>	<b>1</b>	<b>\$33,047</b>	<b>0</b>	<b>\$0</b>
<b>Institute for Families in Society</b>						
Families in Society, Institute for	1	\$8,865	11	\$1,511,925	16	\$1,953,363
<b>Total :</b>	<b>1</b>	<b>\$8,865</b>	<b>11</b>	<b>\$1,511,925</b>	<b>16</b>	<b>\$1,953,363</b>
<b>Institutional Planning</b>						
<b>Law School</b>						
Law School	3	\$260,889	10	\$830,653	11	\$1,188,878
<b>Total :</b>	<b>3</b>	<b>\$260,889</b>	<b>10</b>	<b>\$830,653</b>	<b>11</b>	<b>\$1,188,878</b>
<b>Norman J. Arnold School of Public Health</b>						
Center for Health Services & Policy Research	4	\$220,774	9	\$438,074	0	\$0
Communication Sciences & Disorders	0	\$0	1	\$7,917	0	\$0
Environmental Health Sciences	3	\$232,215	43	\$1,778,988	22	\$1,380,740
Epidemiology & Biostatistics	4	\$32,862	26	\$3,202,636	23	\$2,609,928
Exercise Science	1	\$38,365	9	\$809,437	14	\$1,806,308
Health Administration	6	\$34,036	19	\$650,063	31	\$669,292
Health Promotion & Education	5	\$71,849	29	\$496,257	30	\$977,577
Norman J. Arnold School of Public Health - Dean	1	\$848,130	4	\$3,474,760	2	\$492,197
Prevention Research Center	2	\$19,205	19	\$2,816,396	20	\$2,387,060
<b>Total :</b>	<b>26</b>	<b>\$1,497,436</b>	<b>159</b>	<b>\$13,674,528</b>	<b>142</b>	<b>\$10,323,102</b>
<b>Regional and Four-Year Campuses</b>						
Regional Campuses & Continuing Education	0	\$0	0	\$0	1	\$32,100
USC Aiken	1	\$27,500	17	\$903,292	16	\$1,037,643
USC Beaufort	1	\$3,500	8	\$207,569	8	\$429,987
USC Lancaster	1	\$19,321	4	\$260,153	6	\$456,882
USC Salkehatchie	0	\$0	4	\$512,747	3	\$426,764
USC Spartanburg	11	\$209,757	52	\$1,435,646	34	\$1,311,472
USC Sumter	0	\$0	4	\$250,208	7	\$403,896
USC Union	1	\$5,000	2	\$229,471	1	\$198,582
<b>Total :</b>	<b>15</b>	<b>\$265,078</b>	<b>91</b>	<b>\$3,799,086</b>	<b>76</b>	<b>\$4,297,326</b>
<b>School of Medicine</b>						
Basic Science Research	0	\$0	1	\$209,244	0	\$0
Biochemistry *	0	\$0	14	\$1,422,592	17	\$1,147,890
Cell Biology & Neurosciences	0	\$0	5	\$375,368	4	\$455,234
Developmental Biology & Anatomy	5	\$407,729	10	\$807,295	6	\$547,672
Family & Preventive Medicine	0	\$0	6	\$532,273	5	\$849,326
Health & Safety	0	\$0	1	\$9,600	1	\$10,000
Internal Medicine	5	\$42,585	31	\$921,681	26	\$396,753

DEPARTMENT	CURRENT MONTH		YEAR TO DATE		YEAR TO DATE	
	JANUARY - 2002		FY 2002		FY 2001	
Medicine Library	0	\$0	2	\$137,048	0	\$0
Microbiology & Immunology	0	\$0	4	\$511,016	5	\$682,421
Neuropsychiatry	1	\$3,500	7	\$116,977	5	\$268,390
Obstetrics & Gynecology	0	\$0	0	\$0	2	\$70,525
Ophthalmology	1	\$10,000	1	\$10,000	0	\$0
Orthopaedic Surgery	0	\$0	0	\$0	2	\$7,250
Pathology	1	\$72,250	3	\$252,197	3	\$194,750
Pediatrics/Center for Developmental Disabilities	6	\$333,671	15	\$1,816,945	24	\$2,706,624
Pharmacology & Physiology	0	\$0	1	\$71,500	6	\$189,721
Radiology	0	\$0	1	\$401,974	1	\$400,313
Research & Special Projects	1	\$550	10	\$334,998	4	\$435,802
School of Medicine Graduate Program	0	\$0	0	\$0	2	\$35,360
South Carolina Cancer Center	0	\$0	5	\$135,968	2	\$11,711
Surgery	0	\$0	9	\$184,478	0	\$0
<b>Total :</b>	<b>20</b>	<b>\$870,285</b>	<b>126</b>	<b>\$8,251,154</b>	<b>115</b>	<b>\$8,409,742</b>
<b>School of the Environment</b>						
Earth Sciences & Resources Institute	0	\$0	3	\$226,274	3	\$204,998
School of the Environment	1	\$26,995	7	\$250,025	3	\$13,644
<b>Total :</b>	<b>1</b>	<b>\$26,995</b>	<b>10</b>	<b>\$476,299</b>	<b>6</b>	<b>\$218,642</b>
<b>South Carolina Honors College</b>						
	0	\$0	1	\$102,676	0	\$0
<b>Total :</b>	<b>0</b>	<b>\$0</b>	<b>1</b>	<b>\$102,676</b>	<b>0</b>	<b>\$0</b>
<b>University Libraries</b>						
Thomas Cooper Library	2	\$947,130	4	\$958,150	2	\$260,297
<b>Total :</b>	<b>2</b>	<b>\$947,130</b>	<b>4</b>	<b>\$958,150</b>	<b>2</b>	<b>\$260,297</b>
<b>Vice President for Research</b>						
EPSCoR	0	\$0	0	\$0	42	\$2,414,486
NanoCenter	0	\$0	3	\$377,999	0	\$0
Sponsored Programs & Research	0	\$0	1	\$17,671	1	\$20,000
Vice President for Research	0	\$0	0	\$0	1	\$2,300,000
Vice President for Research - General	0	\$0	3	\$431,342	0	\$0
<b>Total :</b>	<b>0</b>	<b>\$0</b>	<b>7</b>	<b>\$827,012</b>	<b>44</b>	<b>\$4,734,486</b>
<b>Report TOTAL :</b>	<b>123</b>	<b>\$7,514,042</b>	<b>888</b>	<b>\$60,994,155</b>	<b>996</b>	<b>\$77,765,657</b>

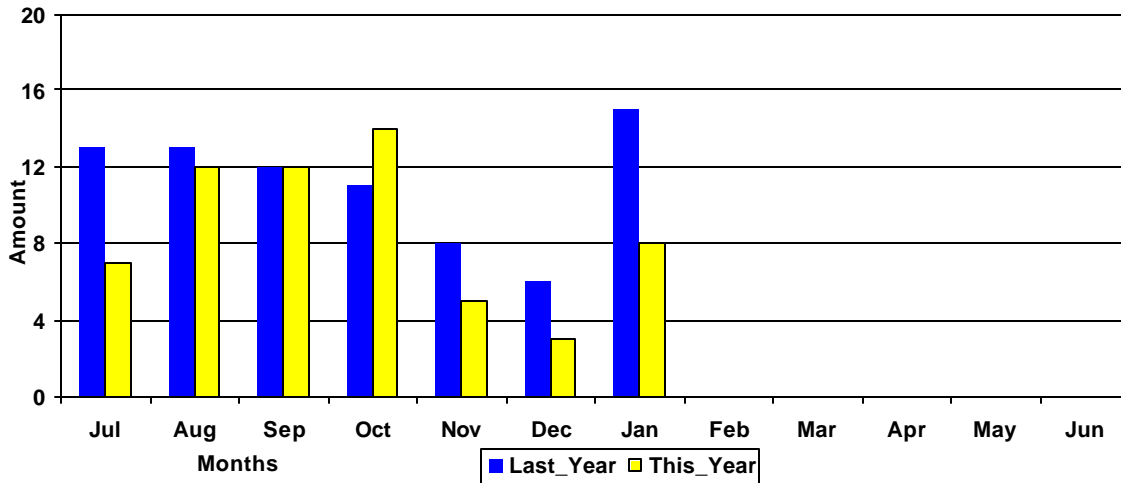
\* - Biochemistry represents faculty with a dual appointment to the Department of Chemistry and the School of Medicine. The figures are included in both division totals but only once in the overall total.

# Funding Agency Comparison Report

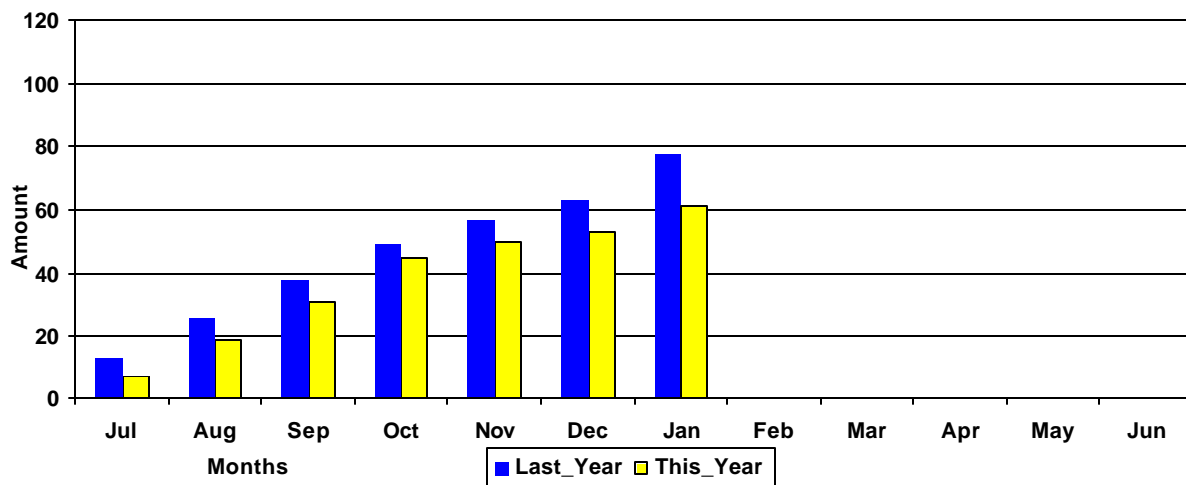
## Year-To-Date - JANUARY - 2002

	<u>FISCAL YEAR - 2002</u>		<u>FISCAL YEAR - 2001</u>	
<b>NSF Awards</b>	49	\$3,768,579	58	\$4,007,436
<b>NIH Awards</b>	68	\$5,946,473	75	\$7,550,951
<b>Dept. Of Defense Awards</b>	33	\$3,361,304	47	\$14,680,120
<b>Dept. Of Education Awards</b>	55	\$6,729,982	48	\$7,657,463
<b>Dept. Of Energy Awards</b>	25	\$5,013,546	28	\$2,701,338
<b>SCUREF Awards from DOE</b>	6	\$751,857	7	\$564,055
<b>State and Municipalities Awards</b>	128	\$6,315,369	198	\$11,246,614

**Amounts Awarded**  
(In millions of dollars)



**Cumulative Amounts Awarded**  
(In millions of dollars)



# PROPOSALS BY DEPARTMENT

DEPARTMENT	CURRENT MONTH JANUARY - 2002		YEAR TO DATE FY 2002		YEAR TO DATE FY 2001	
<b>Business and Finance</b>						
Campus Services	0	\$0	0	\$0	1	\$2,000
<b>Total :</b>	<b>0</b>	<b>\$0</b>	<b>0</b>	<b>\$0</b>	<b>1</b>	<b>\$2,000</b>
<b>College of Criminal Justice</b>						
	2	\$146,647	3	\$180,564	5	\$196,223
<b>Total :</b>	<b>2</b>	<b>\$146,647</b>	<b>3</b>	<b>\$180,564</b>	<b>5</b>	<b>\$196,223</b>
<b>College of Education</b>						
Education	2	\$192,644	2	\$192,644	0	\$0
Education Leadership & Policies	1	\$39,880	7	\$290,331	9	\$155,789
Educational Psychology	2	\$218,742	14	\$748,700	9	\$829,958
Instruction & Teacher Education	0	\$0	7	\$310,843	12	\$2,964,802
Physical Education	0	\$0	5	\$57,000	2	\$142,200
SC Educational Policy Center	0	\$0	2	\$16,500	2	\$92,816
School Improvement Council Assistance	0	\$0	1	\$25,250	0	\$0
USC Children's Center	0	\$0	0	\$0	1	\$30,000
<b>Total :</b>	<b>5</b>	<b>\$451,266</b>	<b>38</b>	<b>\$1,641,268</b>	<b>35</b>	<b>\$4,215,565</b>
<b>College of Engineering &amp; Information</b>						
Chemical Engineering	2	\$286,325	19	\$1,575,631	25	\$5,115,221
Civil & Environmental Engineering	0	\$0	7	\$457,660	10	\$717,515
Computer Science & Engineering	2	\$390,206	22	\$2,448,347	25	\$1,513,369
Electrical Engineering	2	\$864,695	13	\$7,869,296	9	\$6,357,402
Engineering & Information Technology, College of	0	\$0	2	\$161,836	2	\$225,000
Mechanical Engineering	3	\$85,000	21	\$4,183,876	30	\$3,071,665
SCAMP	0	\$0	3	\$1,422,672	2	\$812,000
<b>Total :</b>	<b>9</b>	<b>\$1,626,226</b>	<b>87</b>	<b>\$18,119,318</b>	<b>103</b>	<b>\$17,812,172</b>
<b>College of Hospitality, Retail &amp; Sports</b>						
Hospitality, Retail & Sports Mgmt - Dean's Office	0	\$0	1	\$25,000	1	\$25,000
Sport Administration	0	\$0	0	\$0	1	\$13,000
<b>Total :</b>	<b>0</b>	<b>\$0</b>	<b>1</b>	<b>\$25,000</b>	<b>2</b>	<b>\$38,000</b>
<b>College of Journalism &amp; Mass</b>						
	0	\$0	8	\$207,091	16	\$483,762
<b>Total :</b>	<b>0</b>	<b>\$0</b>	<b>8</b>	<b>\$207,091</b>	<b>16</b>	<b>\$483,762</b>
<b>College of Liberal Arts</b>						
Anthropology	0	\$0	1	\$18,525	1	\$72,250
Archaeology & Anthropology, Institute of	1	\$31,233	9	\$971,442	7	\$1,112,031
Art	1	\$20,100	1	\$20,100	2	\$151,916
English	0	\$0	3	\$56,790	3	\$19,750
French & Classics	0	\$0	1	\$7,533	0	\$0
Geography	0	\$0	12	\$560,242	8	\$390,687
Government & International Studies	1	\$2,408	7	\$142,207	6	\$92,051
History	1	\$4,514	13	\$185,203	15	\$214,956
Institute for Southern Studies	0	\$0	1	\$28,968	0	\$0
International Studies, Institute of	0	\$0	3	\$407,832	1	\$37,946
Linguistics Program	0	\$0	0	\$0	2	\$41,892

DEPARTMENT	CURRENT MONTH JANUARY - 2002		YEAR TO DATE FY 2002		YEAR TO DATE FY 2001	
McKissick Museum	2	\$124,820	4	\$131,320	3	\$112,255
Philosophy	1	\$10,000	1	\$10,000	1	\$14,829
Psychology	2	\$607,950	19	\$1,779,067	29	\$7,686,286
Public Service & Policy Research, Institute for	0	\$0	12	\$2,322,583	29	\$1,962,731
Religious Studies	0	\$0	1	\$50,000	0	\$0
Sociology	2	\$134,060	4	\$210,739	7	\$242,003
Spanish, Italian, & Portuguese	0	\$0	0	\$0	1	\$49,941
Trio Programs	0	\$0	4	\$757,790	2	\$367,697
<b>Total :</b>	<b>11</b>	<b>\$935,085</b>	<b>96</b>	<b>\$7,660,341</b>	<b>117</b>	<b>\$12,569,221</b>
<b>College of Library &amp; Information Science</b>	1	\$29,000	5	\$90,219	5	\$135,449
<b>Total :</b>	<b>1</b>	<b>\$29,000</b>	<b>5</b>	<b>\$90,219</b>	<b>5</b>	<b>\$135,449</b>
<b>College of Nursing</b>						
Academic & Student Affairs	1	\$10,000	4	\$2,104,641	5	\$183,743
Administrative & Clinical Nursing	1	\$528,683	3	\$1,055,473	5	\$163,000
Family & Community Health Nursing	1	\$222,306	6	\$756,182	2	\$2,418,860
<b>Total :</b>	<b>3</b>	<b>\$760,989</b>	<b>13</b>	<b>\$3,916,296</b>	<b>12</b>	<b>\$2,765,603</b>
<b>College of Pharmacy</b>						
Basic Pharmaceutical Sciences	1	\$4,925	8	\$1,255,785	12	\$1,380,536
Clinical Pharmacy	0	\$0	3	\$136,085	3	\$120,728
Palmetto Poison Center	0	\$0	0	\$0	2	\$133,957
Pharmacy Practice	0	\$0	1	\$30,000	9	\$341,440
<b>Total :</b>	<b>1</b>	<b>\$4,925</b>	<b>12</b>	<b>\$1,421,870</b>	<b>26</b>	<b>\$1,976,661</b>
<b>College of Science and Math</b>						
Baruch Institute	7	\$3,285,738	20	\$4,224,600	12	\$955,833
Biological Sciences	6	\$827,815	39	\$3,895,598	50	\$6,444,262
Center For Science Education	0	\$0	4	\$325,041	3	\$130,986
Chemistry & Biochemistry	8	\$985,829	36	\$6,618,668	54	\$8,488,506
EPSCoR (moved to VP for Research)	0	\$0	0	\$0	1	\$40,000
Geological Sciences	6	\$637,525	30	\$2,765,209	29	\$2,491,997
Mathematics	0	\$0	11	\$434,851	12	\$766,827
Physics & Astronomy	6	\$1,564,549	19	\$3,318,895	22	\$7,891,648
Science & Math Administration	0	\$0	2	\$2,190,461	7	\$1,374,443
Statistics	1	\$4,092	11	\$242,573	8	\$355,906
<b>Total :</b>	<b>34</b>	<b>\$7,305,548</b>	<b>172</b>	<b>\$24,015,896</b>	<b>198</b>	<b>\$28,940,408</b>
<b>College of Social Work</b>	2	\$60,039	39	\$932,544	41	\$6,076,004
<b>Total :</b>	<b>2</b>	<b>\$60,039</b>	<b>39</b>	<b>\$932,544</b>	<b>41</b>	<b>\$6,076,004</b>
<b>Darla Moore School of Business</b>						
Business Administration - Division Of Research	6	\$50,938	42	\$822,474	39	\$595,619
Small Business Development Center	1	\$1,120,714	5	\$2,431,985	3	\$2,386,650
<b>Total :</b>	<b>7</b>	<b>\$1,171,652</b>	<b>47</b>	<b>\$3,254,459</b>	<b>42</b>	<b>\$2,982,269</b>
<b>Division of Student Affairs</b>						
Housing & Residential Services	0	\$0	1	\$25,000	0	\$0
Student Health	0	\$0	1	\$13,531	0	\$0

DEPARTMENT	CURRENT MONTH JANUARY - 2002		YEAR TO DATE FY 2002		YEAR TO DATE FY 2001	
Student Life	0	\$0	2	\$27,515	1	\$19,410
<b>Total :</b>	<b>0</b>	<b>\$0</b>	<b>4</b>	<b>\$66,046</b>	<b>1</b>	<b>\$19,410</b>
<b>English Program for Internationals</b>						
English Program For Internationals	1	\$265,492	1	\$265,492	1	\$232,149
<b>Total :</b>	<b>1</b>	<b>\$265,492</b>	<b>1</b>	<b>\$265,492</b>	<b>1</b>	<b>\$232,149</b>
<b>Institute for Families in Society</b>						
Families in Society, Institute for	2	\$149,984	14	\$1,379,132	10	\$1,186,259
<b>Total :</b>	<b>2</b>	<b>\$149,984</b>	<b>14</b>	<b>\$1,379,132</b>	<b>10</b>	<b>\$1,186,259</b>
<b>Institutional Planning</b>						
<b>Law Enforcement &amp; Safety</b>						
	0	\$0	1	\$21,600	2	\$67,528
<b>Total :</b>	<b>0</b>	<b>\$0</b>	<b>1</b>	<b>\$21,600</b>	<b>2</b>	<b>\$67,528</b>
<b>Law School</b>						
Law School	3	\$355,840	10	\$1,460,772	11	\$1,332,522
<b>Total :</b>	<b>3</b>	<b>\$355,840</b>	<b>10</b>	<b>\$1,460,772</b>	<b>11</b>	<b>\$1,332,522</b>
<b>Norman J. Arnold School of Public Health</b>						
Center for Health Services & Policy Research	1	\$136,000	5	\$519,449	0	\$0
Communication Sciences & Disorders	0	\$0	1	\$7,917	1	\$199,011
Environmental Health Sciences	6	\$219,594	17	\$1,346,499	12	\$639,420
Epidemiology & Biostatistics	4	\$143,198	19	\$1,300,005	20	\$2,766,207
Exercise Science	11	\$797,439	22	\$1,409,486	14	\$1,105,598
Health Administration	6	\$34,036	17	\$228,414	31	\$185,965
Health Promotion & Education	4	\$654,271	24	\$983,798	23	\$572,212
Norman J. Arnold School of Public Health - Dean	0	\$0	0	\$0	2	\$1,338,100
Prevention Research Center	0	\$0	6	\$978,674	8	\$846,039
<b>Total :</b>	<b>32</b>	<b>\$1,984,538</b>	<b>111</b>	<b>\$6,774,242</b>	<b>111</b>	<b>\$7,652,552</b>
<b>Regional and Four-Year Campuses</b>						
USC Aiken	2	\$33,205	18	\$1,440,294	14	\$633,869
USC Beaufort	1	\$20,000	8	\$192,551	10	\$536,197
USC Lancaster	0	\$0	3	\$317,360	3	\$370,165
USC Salkehatchie	2	\$64,250	4	\$355,543	5	\$437,668
USC Spartanburg	3	\$264,258	26	\$1,505,809	16	\$990,280
USC Sumter	0	\$0	2	\$192,079	6	\$962,900
USC Union	0	\$0	0	\$0	1	\$299,376
<b>Total :</b>	<b>8</b>	<b>\$381,713</b>	<b>61</b>	<b>\$4,003,636</b>	<b>55</b>	<b>\$4,230,455</b>
<b>School of Medicine</b>						
Animal Resources Facility	0	\$0	0	\$0	1	\$128,159
Biochemistry *	3	\$477,690	10	\$1,786,762	5	\$1,153,637
Cell Biology & Neurosciences	0	\$0	1	\$108,000	3	\$398,502
Developmental Biology & Anatomy	3	\$54,600	10	\$1,232,558	17	\$2,213,275
Family & Preventive Medicine	3	\$928,580	8	\$1,395,436	5	\$582,695
Internal Medicine	2	\$110,000	13	\$524,541	5	\$828,514
Microbiology & Immunology	3	\$805,189	7	\$1,647,387	3	\$548,975

DEPARTMENT	CURRENT MONTH		YEAR TO DATE		YEAR TO DATE	
	JANUARY - 2002		FY 2002		FY 2001	
Neuropsychiatry	2	\$150,137	11	\$1,064,272	2	\$408,160
Obstetrics & Gynecology	0	\$0	1	\$59,000	1	\$59,000
Ophthalmology	0	\$0	1	\$35,000	0	\$0
Pathology	3	\$675,901	11	\$1,582,579	7	\$1,076,089
Pediatrics/Center for Developmental Disabilities	2	\$130,000	15	\$2,201,080	9	\$519,596
Pharmacology & Physiology	7	\$579,580	16	\$1,280,007	13	\$994,124
Radiology	0	\$0	0	\$0	1	\$400,313
Research & Special Projects	2	\$61,617	5	\$71,975	0	\$0
School of Medicine - Dean's Office	0	\$0	1	\$27,493	0	\$0
School of Medicine Graduate Program	0	\$0	1	\$17,680	2	\$17,680
South Carolina Cancer Center	0	\$0	3	\$105,968	2	\$11,711
Surgery	1	\$124,200	5	\$389,523	1	\$69,000
<b>Total :</b>	<b>31</b>	<b>\$4,097,494</b>	<b>119</b>	<b>\$13,529,261</b>	<b>77</b>	<b>\$9,409,430</b>
<b>School of Music</b>	0	\$0	1	\$139,603	0	\$0
<b>Total :</b>	<b>0</b>	<b>\$0</b>	<b>1</b>	<b>\$139,603</b>	<b>0</b>	<b>\$0</b>
<b>School of the Environment</b>						
Earth Sciences & Resources Institute	4	\$945,095	7	\$2,021,909	3	\$1,448,187
School of the Environment	0	\$0	14	\$1,274,784	6	\$1,610,722
<b>Total :</b>	<b>4</b>	<b>\$945,095</b>	<b>21</b>	<b>\$3,296,693</b>	<b>9</b>	<b>\$3,058,909</b>
<b>South Carolina Honors College</b>	1	\$7,500	2	\$79,482	3	\$148,439
<b>Total :</b>	<b>1</b>	<b>\$7,500</b>	<b>2</b>	<b>\$79,482</b>	<b>3</b>	<b>\$148,439</b>
<b>University Libraries</b>						
Libraries & Collections	0	\$0	0	\$0	2	\$7,350
Thomas Cooper Library	0	\$0	1	\$90,000	1	\$166,878
<b>Total :</b>	<b>0</b>	<b>\$0</b>	<b>1</b>	<b>\$90,000</b>	<b>3</b>	<b>\$174,228</b>
<b>University Press</b>	0	\$0	0	\$0	1	\$10,000
<b>Total :</b>	<b>0</b>	<b>\$0</b>	<b>0</b>	<b>\$0</b>	<b>1</b>	<b>\$10,000</b>
<b>Vice President for Research</b>						
EPSCoR	0	\$0	0	\$0	2	\$232,658
NanoCenter	4	\$1,554,534	19	\$7,081,101	0	\$0
Sponsored Programs & Research	0	\$0	1	\$60,000	0	\$0
Vice President for Research - General	0	\$0	0	\$0	1	\$2,000,000
<b>Total :</b>	<b>4</b>	<b>\$1,554,534</b>	<b>20</b>	<b>\$7,141,101</b>	<b>3</b>	<b>\$2,232,658</b>
<b>Report TOTAL :</b>	<b>158</b>	<b>\$21,755,876</b>	<b>877</b>	<b>\$97,925,164</b>	<b>885</b>	<b>\$106,794,238</b>

\* - Biochemistry represents faculty with a dual appointment to the Department of Chemistry and the School of Medicine. The figures are included in both division totals but only once in the overall total.