

MEMORANDUM

To: Harris Pastides, Ph.D.
 Interim Vice President for Research

From: Anthony M. Boccanfuso, Ph.D.
 Managing Director

RE: Report of Sponsored Program Activity for February 2003

Date: March 17, 2003

The month of February is down from February 2002, however year-to-date figures continue to look positive.

- February 2003 awards totaled \$5.8 million of new funding, a decrease of \$1,260,345 from February 2002.
- Total awards (research, service, training) through February reached \$85.5 million (compared to \$68.6 million in FY2002), an increase of twenty-five (25%) when compared to last year's number.
- Faculty submitted 141 proposals requesting \$21 million during February. Thus far in the fiscal year, SPAR has processed 1106 proposals requesting \$146 million, compared to last year's totals of 998 and \$111 million.

	February FY03	YTD FY02 July to February	YTD FY03 July to February	YTD Change
Award Dollars	\$5,783,472	\$68,637,197	\$85,522,397	25%
Research Direct Expenditures	\$5,021,371	\$35,214,049	\$37,452,279	6%
Research IDC Expenditures	\$1,449,425	\$9,413,082	\$9,910,483	5%
Proposals Submitted	141	998	1106	11%
Proposal Dollars Requested	\$21,142,342	\$110,781,837	\$146,221,778	32%
Notable Areas				
Health Science Colleges	\$1,484,951	\$27,724,183	\$37,632,294	36%
Engineering & Information Technology	\$947,000	\$9,520,131	\$8,689,612	(10)%
Liberal Arts, College of	\$1,094,218	\$3,838,875	\$8,031,418	52%
Science and Mathematics, College of	\$873,069	\$11,250,233	\$16,438,054	32%

cc: Andrew A. Sorensen, Ph.D.
 Jerome D. Odom, Ph.D.
 R. Steven Etheredge
 Richard Kelly

February Featured Awards

Engineering & Information Technology, College of

Electrical Engineering

Ali, Mohammad

Career: Flexible, Ultra-Thin, Packaged Antennas and Arrays for Future Generation Wireless Applications - (FA22)

\$400,000

USCRF/National Science Foundation (NSF) – General

Mechanical Engineering

Sutton, Michael

Reynolds, Anthony

Myrick, Michael

CNT Size Effects on Polymer Composite Properties - (FA28)

\$250,000

USCRF/National Aeronautics & Space Administration (NASA) - General

Environment, School of the

Environment, School of the

Coull, Bruce

Sustainable Universities Initiative - (K101)

\$200,000

USC Education Foundation/Kann Rasumssen Foundation

Liberal Arts, College of

Psychology

Prinz, Ronald

Risk Reduction via Promotion of Youth Development - (FA15)

\$804,946

USCRF/National Institute on Drug Abuse (NIDA)/NIH

Medicine, School of

Pediatrics/Developmental Disabilities, Center for

Lamb, Lawrence

Targeted Immunotherapy for Acute Lymphoblastic Leukemia - (FA02)

\$49,980

USCRF/National Childhood Cancer Foundation/NIH

Public Health, Norman J. Arnold School of

Health Promotion, Education & Behavior

Richter, Donna

Stoskopf, Carleen

Assessment of Bioterrorism Readiness - (FA18)

\$51,571

SC Department of Health & Human Services/CDC

Science and Mathematics, College of

Biological Sciences

Benner, Ronald

Collaborative Research: Biogeochemical Cycling of Particulate and Dissolved Organic Matter in the Artic Ocean Using Molecular Markers -

\$97,915

USCRF/National Science Foundation (NSF) – General

Geological Sciences

Voulgaris, George

Torres, Raymond

Intertidal Marsh Hydrology and Geomorphology - (FA43)

\$110,996

USCRF/National Science Foundation (NSF) - General

Sponsored Programs and Research Monthly Report

SUMMARY OF AWARDS FEBRUARY - 2003

By Purpose

Research Awards	\$4,393,732
Training Awards	\$264,204
Service Awards	\$1,075,770
Equipment Awards	\$5,000
Graduate Assistantship Awards	\$44,766
TOTAL:	\$5,783,472

By Source

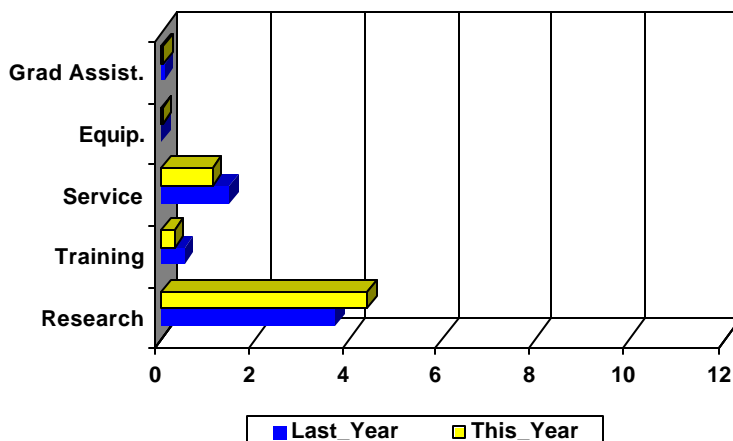
Federal Awards	\$4,698,669
Private Awards	\$929,532
State Awards	\$155,271
TOTAL:	\$5,783,472

COMPARISON OF AMOUNT RECEIVED

FEBRUARY - 2003 vs. FEBRUARY - 2002

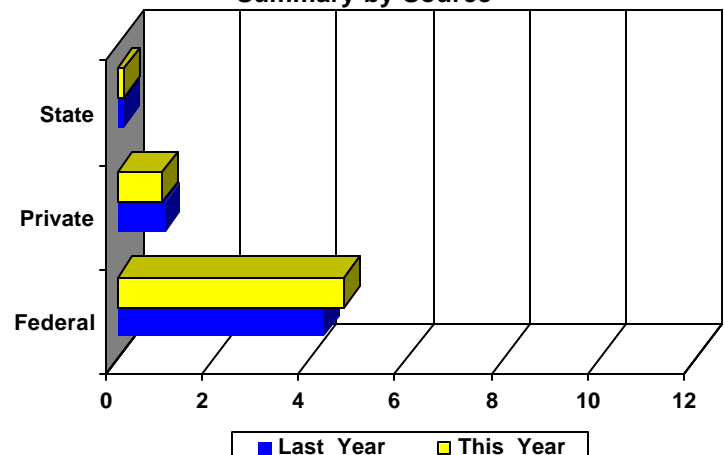
Amounts Received
(In millions of dollars)

Summary by Purpose



Amounts Received
(In millions of dollars)

Summary by Source



AWARDS BY DEPARTMENT

DEPARTMENT	CURRENT MONTH FEBRUARY - 2003		YEAR TO DATE FY 2003		YEAR TO DATE FY 2002	
Business & Finance						
Recycling & Waste Management	0	\$0	0	\$0	1	\$9,970
Total :	0	\$0	0	\$0	1	\$9,970
Business, Moore School of						
Business Administration - Division of Research	4	\$13,618	30	\$929,662	60	\$1,052,241
Small Business Development Center	0	\$0	4	\$341,640	7	\$830,588
Total :	4	\$13,618	34	\$1,271,302	67	\$1,882,829
Education, College of						
Education	1	\$40,919	4	\$162,760	2	\$35,760
Education Leadership & Policies	0	\$0	5	\$215,408	5	\$197,682
Educational Psychology	1	\$23,580	9	\$486,451	12	\$448,571
Instruction & Teacher Education	2	\$28,000	17	\$1,914,790	18	\$1,973,793
Physical Education	0	\$0	1	\$5,000	6	\$60,000
SC Educational Policy Center	0	\$0	0	\$0	1	\$15,500
School Improvement Council Assistance	0	\$0	2	\$150,759	3	\$159,805
USC Children's Center	0	\$0	1	\$7,500	0	\$0
Total :	4	\$92,499	39	\$2,942,668	47	\$2,891,111
Engineering & Information Technology,						
Chemical Engineering	3	\$125,000	24	\$2,206,109	23	\$2,356,642
Civil & Environmental Engineering	1	\$2,000	13	\$439,008	15	\$1,449,393
Computer Science & Engineering	1	\$100,000	14	\$412,273	9	\$87,034
Electrical Engineering	2	\$470,000	8	\$3,734,578	8	\$2,309,441
Engineering & Information Technology, College of	0	\$0	2	\$141,500	4	\$1,662,495
Mechanical Engineering	1	\$250,000	15	\$1,605,737	22	\$1,212,454
SC Alliance for Minority Participation (SCAMP)	0	\$0	4	\$150,407	6	\$442,672
Total :	8	\$947,000	80	\$8,689,612	87	\$9,520,131
English Program for Internationals						
English Program for Internationals	0	\$0	0	\$0	1	\$266,508
Total :	0	\$0	0	\$0	1	\$266,508
Enrollment Management						
Enrollment Management	0	\$0	1	\$37,583	1	\$33,047
Total :	0	\$0	1	\$37,583	1	\$33,047
Environment, School of the						
Earth Sciences & Resources Institute	0	\$0	4	\$27,050	4	\$676,274
Environment, School of the	3	\$475,755	10	\$799,862	9	\$490,470
Total :	3	\$475,755	14	\$826,912	13	\$1,166,744
Families in Society, Institute for						
Families in Society, Institute for	1	\$31,000	12	\$2,131,720	15	\$1,721,756
Total :	1	\$31,000	12	\$2,131,720	15	\$1,721,756
Honors College, South Carolina						
Honors College, South Carolina	0	\$0	2	\$12,191	1	\$102,676

DEPARTMENT	CURRENT MONTH FEBRUARY - 2003		YEAR TO DATE FY 2003		YEAR TO DATE FY 2002	
Total :	0	\$0	2	\$12,191	1	\$102,676
Hospitality, Retail & Sports Management,						
Hospitality, Retail & Sports Mgmt - (Dean)	0	\$0	0	\$0	1	\$62,500
Retailing Studies, Center for	0	\$0	1	\$8,000	1	\$11,429
Total :	0	\$0	1	\$8,000	2	\$73,929
Institutional Planning						
Law, School of						
Law, School of	4	\$515,827	9	\$1,111,383	11	\$1,052,542
Total :	4	\$515,827	9	\$1,111,383	11	\$1,052,542
Liberal Arts, College of						
Archaeology & Anthropology, Institute of	0	\$0	8	\$322,673	8	\$1,145,349
Art	0	\$0	1	\$1,200	0	\$0
Criminology & Criminal Justice, Department of	0	\$0	1	\$24,447	1	\$32,596
English	0	\$0	0	\$0	2	\$45,000
Geography	5	\$157,216	17	\$730,001	14	\$719,582
Government & International Studies	0	\$0	6	\$23,373	6	\$56,106
History	0	\$0	12	\$138,461	20	\$54,823
Languages, Literatures, and Cultures, Department	0	\$0	0	\$0	1	\$7,533
Liberal Arts - (Dean)	0	\$0	0	\$0	1	\$6,000
McKissick Museum	1	\$1,200	4	\$133,877	4	\$20,070
Naval Science	0	\$0	2	\$4,000	2	\$4,000
Philosophy	0	\$0	2	\$20,900	2	\$55,294
Psychology	2	\$834,784	37	\$3,705,498	18	\$971,126
Public Service & Policy Research, Institute for	2	\$101,018	16	\$2,801,364	15	\$612,254
Religious Studies	0	\$0	1	\$25,000	1	\$50,000
Sociology	0	\$0	1	\$90,424	1	\$6,018
Southern Studies, Institute for	0	\$0	1	\$10,200	2	\$53,124
Total :	10	\$1,094,218	109	\$8,031,418	98	\$3,838,875
Mass Communications & Information						
Journalism & Mass Communications, School of	1	\$127,597	12	\$785,572	8	\$202,539
Library & Information Sciences, School of	0	\$0	6	\$29,696	4	\$53,565
Total :	1	\$127,597	18	\$815,268	12	\$256,104
Medicine, School of						
Basic Science Research	0	\$0	1	\$201,938	1	\$209,244
Biochemistry *	0	\$0	17	\$1,570,494	15	\$1,196,775
Cancer Center, South Carolina	0	\$0	11	\$197,922	6	\$151,014
Cell & Developmental Biology & Anatomy	5	\$603,868	17	\$1,603,496	13	\$977,823
Cell Biology & Neurosciences	0	\$0	0	\$0	5	\$375,368
Family & Preventive Medicine	0	\$0	5	\$889,087	7	\$547,273
Health & Safety	0	\$0	0	\$0	1	\$9,600
Internal Medicine	5	\$57,336	19	\$707,592	33	\$962,651
Medicine Library	0	\$0	3	\$244,285	2	\$137,048
Neuropsychiatry	0	\$0	6	\$487,296	8	\$188,977
Obstetrics & Gynecology	0	\$0	2	\$130,165	0	\$0
Ophthalmology	1	\$1,097	4	\$23,942	1	\$10,000
Pathology	0	\$0	2	\$25,000	3	\$252,197

DEPARTMENT	CURRENT MONTH FEBRUARY - 2003		YEAR TO DATE FY 2003		YEAR TO DATE FY 2002	
Pathology & Microbiology	0	\$0	8	\$680,431	4	\$511,016
Pediatrics/Developmental Disabilities, Center for	2	\$56,080	18	\$1,811,790	16	\$1,823,545
Pharmacology, Physiology & Neuroscience	0	\$0	6	\$466,874	2	\$81,500
Radiology	0	\$0	1	\$412,435	1	\$401,974
Research & Special Projects	3	\$89,678	12	\$492,544	12	\$352,498
Surgery	0	\$0	4	\$41,750	10	\$232,428
Total :	16	\$808,059	136	\$9,987,041	140	\$8,420,931
Nursing, College of						
Academic & Student Affairs	0	\$0	6	\$572,904	13	\$832,251
Administrative & Clinical Nursing	0	\$0	2	\$97,164	1	\$86,003
Family & Community Health Nursing	0	\$0	3	\$262,904	1	\$7,725
Total :	0	\$0	11	\$932,972	15	\$925,979
Pharmacy, College of						
Basic Pharmaceutical Sciences	3	\$268,410	8	\$631,939	5	\$644,166
Palmetto Poison Center	1	\$5,000	2	\$215,990	2	\$285,881
Pharmacy & Health Outcomes Sci.	0	\$0	1	\$14,500	3	\$60,361
Pharmacy Practice	1	\$91,250	3	\$114,505	3	\$117,835
Total :	5	\$364,660	14	\$976,934	13	\$1,108,243
Provost, Office of the						
Provost, Office of the	0	\$0	1	\$4,335	0	\$0
TRIO Programs	0	\$0	5	\$1,253,694	6	\$1,300,187
Total :	0	\$0	6	\$1,258,029	6	\$1,300,187
Public Health, Norman J. Arnold School of						
Communication Sciences & Disorders	0	\$0	2	\$11,141	1	\$7,917
Environmental Health Sciences	0	\$0	29	\$1,574,256	45	\$1,829,910
Epidemiology & Biostatistics	1	\$5,146	33	\$2,650,357	27	\$3,254,935
Exercise Science	1	\$5,000	19	\$1,670,011	12	\$884,437
Health Administration	2	\$5,755	30	\$948,785	20	\$653,647
Health Promotion, Education & Behavior	2	\$54,571	42	\$2,552,554	34	\$1,073,369
Health Services & Policy Research, Center for	0	\$0	7	\$379,982	10	\$931,452
Prevention Research Center	1	\$24,131	20	\$3,477,672	20	\$3,202,002
Public Health, Norman J. Arnold School of - (Dean)	0	\$0	9	\$5,642,813	4	\$3,474,760
Total :	7	\$94,603	191	\$18,907,571	173	\$15,312,429
Regional and Four-Year Campuses						
USC Aiken	5	\$70,764	19	\$1,101,004	19	\$963,895
USC Beaufort	2	\$43,524	8	\$332,644	11	\$269,197
USC Lancaster	0	\$0	4	\$485,689	4	\$260,153
USC Salkehatchie	1	\$8,500	6	\$372,145	4	\$512,747
USC Spartanburg	2	\$5,150	42	\$1,457,358	54	\$1,846,316
USC Sumter	0	\$0	2	\$260,079	4	\$250,208
USC Union	0	\$0	2	\$237,948	2	\$229,471
Total :	10	\$127,938	83	\$4,246,867	98	\$4,331,987
Research, Vice President for						
Biomedical Research Infrastructure Network (BRIN)	0	\$0	6	\$1,087,993	0	\$0
NanoCenter	0	\$0	6	\$763,388	4	\$364,139

DEPARTMENT	CURRENT MONTH FEBRUARY - 2003		YEAR TO DATE FY 2003		YEAR TO DATE FY 2002	
Research, Vice President for - (General)	0	\$0	0	\$0	3	\$431,342
Sponsored Programs & Research	0	\$0	1	\$24,000	1	\$10,683
Technology Incubator	0	\$0	1	\$160,000	0	\$0
Total :	0	\$0	14	\$2,035,381	8	\$806,164
Science and Mathematics, College of						
Baruch Institute	0	\$0	21	\$4,642,570	17	\$1,583,859
Biological Research & Technology, Institute for	0	\$0	0	\$0	2	\$3,300
Biological Sciences	4	\$413,591	30	\$2,575,064	32	\$3,213,054
Chemistry & Biochemistry	1	\$13,825	32	\$2,535,121	33	\$2,724,312
COBRE: Center for Colon Cancer Research	0	\$0	11	\$2,366,028	0	\$0
Geological Sciences	5	\$213,882	37	\$2,115,967	39	\$1,659,529
Mathematics	1	\$70,001	3	\$288,002	4	\$247,551
Physics & Astronomy	2	\$14,200	17	\$778,683	7	\$815,584
Science & Math Administration	1	\$147,570	6	\$812,661	6	\$743,043
Science Education, Center for	0	\$0	1	\$12,400	1	\$12,400
Statistics	0	\$0	13	\$311,558	10	\$247,601
Total :	14	\$873,069	171	\$16,438,054	151	\$11,250,233
Social Work, College of						
	3	\$217,629	47	\$6,287,776	46	\$1,956,601
Total :	3	\$217,629	47	\$6,287,776	46	\$1,956,601
Student Affairs, Division of						
Student Health	0	\$0	2	\$11,932	3	\$313,265
Student Life	0	\$0	2	\$132,277	4	\$158,199
Total :	0	\$0	4	\$144,209	7	\$471,464
University Libraries						
Thomas Cooper Library	0	\$0	0	\$0	5	\$1,133,532
Total :	0	\$0	0	\$0	5	\$1,133,532
Report TOTAL :	90	\$5,783,472	979	\$85,522,397	1003	\$68,637,197

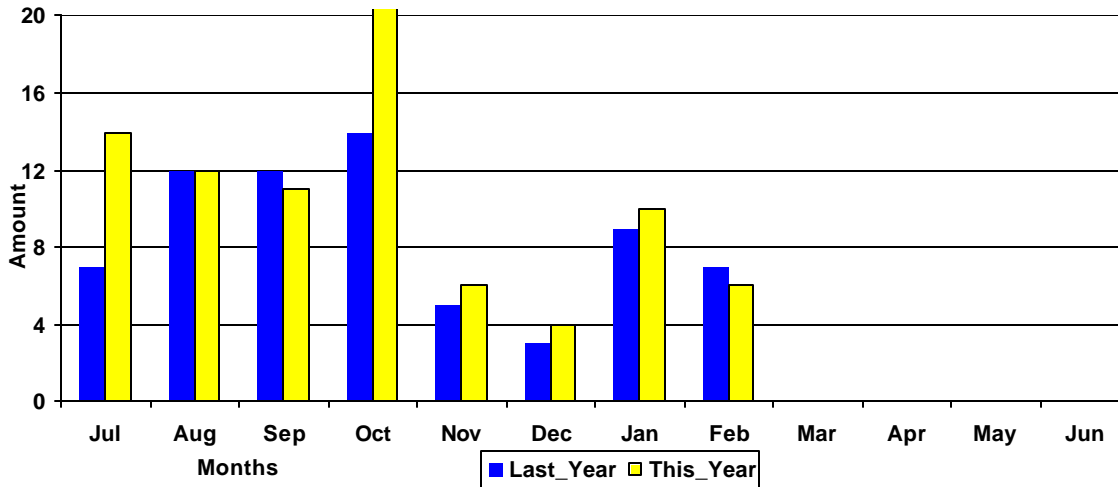
* - Biochemistry represents faculty with a dual appointment to the Department of Chemistry and the School of Medicine. The figures are included in both division totals but only once in the overall total.

Funding Agency Comparison Report

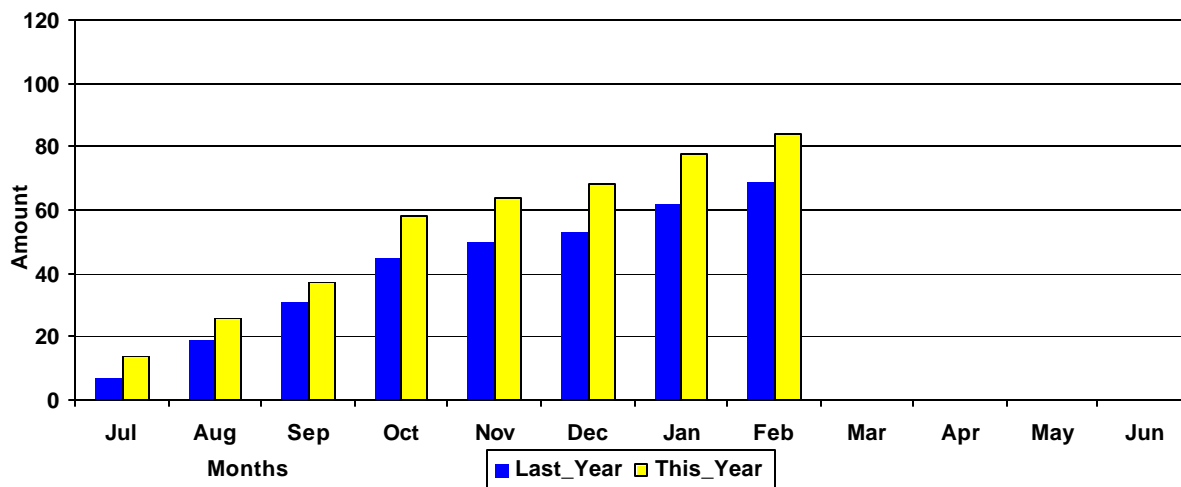
Year-To-Date -FEBRUARY - 2003

	<u>FISCAL YEAR - 2003</u>		<u>FISCAL YEAR - 2002</u>		<u>YTD CHANGE</u>
NSF Awards	63	\$5,963,542	61	\$4,419,795	35%
NIH Awards	111	\$13,475,172	74	\$6,763,160	99%
Dept. Of Defense Awards	48	\$7,425,934	37	\$3,560,591	109%
Dept. Of Education Awards	50	\$7,104,490	63	\$6,974,373	2%
Dept. Of Energy Awards	38	\$3,687,041	35	\$5,856,985	(37)%
State and Municipalities Awards	122	\$3,592,200	132	\$6,424,736	(44)%
Non Profit Awards	131	\$4,422,258	158	\$5,919,310	(25)%
Business and Industry Awards	115	\$1,610,642	138	\$2,129,239	(24)%

Amounts Awarded
(In millions of dollars)



Cumulative Amounts Awarded
(In millions of dollars)



PROPOSALS BY DEPARTMENT

DEPARTMENT	CURRENT MONTH FEBRUARY - 2003		YEAR TO DATE FY 2003		YEAR TO DATE FY 2002	
Business, Moore School of						
Business Administration - Division of Research	3	\$17,119	27	\$475,581	48	\$862,217
Small Business Development Center	0	\$0	4	\$1,372,178	5	\$2,431,985
Total :	3	\$17,119	31	\$1,847,759	53	\$3,294,202
Education, College of						
Education	0	\$0	0	\$0	2	\$192,644
Education Leadership & Policies	0	\$0	2	\$187,292	7	\$290,331
Educational Psychology	2	\$391,651	7	\$554,500	15	\$764,482
Instruction & Teacher Education	1	\$5,000	17	\$3,435,298	8	\$331,874
Physical Education	0	\$0	0	\$0	5	\$57,000
SC Educational Policy Center	0	\$0	0	\$0	2	\$16,500
School Improvement Council Assistance	0	\$0	1	\$12,000	1	\$25,250
USC Children's Center	0	\$0	2	\$36,500	0	\$0
Total :	3	\$396,651	29	\$4,225,590	40	\$1,678,081
Engineering & Information Technology,						
Chemical Engineering	7	\$1,123,358	43	\$7,383,118	25	\$1,788,052
Civil & Environmental Engineering	6	\$526,471	25	\$2,491,606	13	\$1,144,647
Computer Science & Engineering	4	\$969,751	35	\$3,894,500	25	\$2,680,770
Electrical Engineering	6	\$2,023,244	24	\$7,473,632	15	\$7,094,257
Engineering & Information Technology, College of	0	\$0	3	\$196,004	4	\$353,336
Mechanical Engineering	2	\$68,525	20	\$2,018,502	25	\$4,532,545
SC Alliance for Minority Participation (SCAMP)	0	\$0	1	\$16,000	3	\$1,422,672
Total :	25	\$4,711,349	151	\$23,473,362	110	\$19,016,279
English Program for Internationals						
English Program for Internationals	0	\$0	1	\$280,140	1	\$265,492
Total :	0	\$0	1	\$280,140	1	\$265,492
Environment, School of the						
Earth Sciences & Resources Institute	0	\$0	5	\$352,584	8	\$2,132,612
Environment, School of the	2	\$98,759	15	\$1,070,045	15	\$1,374,784
Total :	2	\$98,759	20	\$1,422,629	23	\$3,507,396
Families in Society, Institute for						
	3	\$295,805	19	\$2,848,028	14	\$1,379,132
Total :	3	\$295,805	19	\$2,848,028	14	\$1,379,132
Honors College, South Carolina						
	3	\$14,191	6	\$705,370	2	\$79,482
Total :	3	\$14,191	6	\$705,370	2	\$79,482
Hospitality, Retail & Sports Management,						
Administrative Information Management	0	\$0	1	\$244,450	0	\$0
Hospitality, Retail & Sports Mgmt - (Dean)	0	\$0	1	\$38,000	1	\$25,000
Retailing Studies, Center for	1	\$941,364	3	\$1,828,174	2	\$12,000
Sport Administration	0	\$0	0	\$0	1	\$14,000

DEPARTMENT	CURRENT MONTH FEBRUARY - 2003		YEAR TO DATE FY 2003		YEAR TO DATE FY 2002	
Total :	1	\$941,364	5	\$2,110,624	4	\$51,000
Institutional Planning						
Law Enforcement & Safety	0	\$0	0	\$0	1	\$21,600
Total :	0	\$0	0	\$0	1	\$21,600
Law, School of						
Law, School of	1	\$5,000	10	\$1,127,518	10	\$1,460,772
Total :	1	\$5,000	10	\$1,127,518	10	\$1,460,772
Liberal Arts, College of						
Anthropology	1	\$151,296	2	\$155,496	1	\$18,525
Archaeology & Anthropology, Institute of	0	\$0	8	\$2,155,458	9	\$971,442
Art	0	\$0	1	\$1,200	2	\$30,100
Criminology & Criminal Justice, Department of	0	\$0	1	\$53,473	0	\$0
English	0	\$0	0	\$0	4	\$96,790
Geography	0	\$0	17	\$1,249,481	13	\$679,660
Government & International Studies	1	\$15,000	8	\$159,366	7	\$142,207
History	1	\$40,000	9	\$206,500	14	\$186,206
International Studies, Institute of	1	\$45,149	4	\$477,045	3	\$407,832
Languages, Literatures, and Cultures, Department	0	\$0	0	\$0	1	\$7,533
McKissick Museum	0	\$0	4	\$109,849	4	\$131,320
Philosophy	0	\$0	1	\$450,331	1	\$10,000
Psychology	3	\$713,507	37	\$8,354,182	21	\$2,757,037
Public Service & Policy Research, Institute for	2	\$94,403	13	\$656,063	15	\$2,453,186
Religious Studies	0	\$0	1	\$25,000	1	\$50,000
Sociology	2	\$231,518	8	\$633,322	5	\$374,712
Southern Studies, Institute for	1	\$101,317	2	\$111,517	1	\$28,968
Total :	12	\$1,392,190	116	\$14,798,283	102	\$8,345,518
Mass Communications & Information						
Journalism & Mass Communications, School of	3	\$338,049	13	\$993,524	8	\$207,091
Library & Information Sciences, School of	0	\$0	5	\$26,831	0	\$0
Mass Communications & Information Studies, Colleg	0	\$0	1	\$89,954	0	\$0
Total :	3	\$338,049	19	\$1,110,309	8	\$207,091
Medicine, School of						
Biochemistry *	0	\$0	0	\$0	4	\$786,487
Cancer Center, South Carolina	0	\$0	9	\$158,382	3	\$105,968
Cell & Developmental Biology & Anatomy	2	\$623,394	16	\$2,834,398	10	\$1,232,558
Cell Biology & Neurosciences	0	\$0	0	\$0	1	\$108,000
Family & Preventive Medicine	0	\$0	7	\$1,005,327	8	\$1,395,436
Internal Medicine	0	\$0	6	\$860,662	13	\$524,541
Medicine, School of - (Dean)	0	\$0	0	\$0	1	\$27,493
Medicine, School of - (Graduate Program)	0	\$0	0	\$0	1	\$17,680
Neuropsychiatry	1	\$174,141	4	\$421,513	12	\$1,106,008
Obstetrics & Gynecology	0	\$0	1	\$71,165	1	\$59,000
Ophthalmology	0	\$0	1	\$30,200	1	\$35,000
Pathology	0	\$0	0	\$0	11	\$1,582,579
Pathology & Microbiology	1	\$258,100	13	\$1,897,336	7	\$1,647,387
Pediatrics/Developmental Disabilities, Center for	1	\$266,300	13	\$2,121,062	17	\$2,229,632

DEPARTMENT	CURRENT MONTH FEBRUARY - 2003		YEAR TO DATE FY 2003		YEAR TO DATE FY 2002	
Pharmacology, Physiology & Neuroscience	1	\$338,530	19	\$3,525,431	17	\$1,354,520
Research & Special Projects	0	\$0	6	\$306,427	6	\$160,375
Surgery	0	\$0	4	\$215,181	7	\$796,023
Total :	6	\$1,660,465	99	\$13,447,084	120	\$13,168,687
Music, School of	1	\$1,000	1	\$1,000	1	\$139,603
Total :	1	\$1,000	1	\$1,000	1	\$139,603
Nursing, College of						
Academic & Student Affairs	0	\$0	5	\$1,333,879	4	\$2,104,641
Administrative & Clinical Nursing	0	\$0	3	\$851,210	3	\$1,055,473
Family & Community Health Nursing	0	\$0	3	\$945,427	6	\$756,182
Total :	0	\$0	11	\$3,130,516	13	\$3,916,296
Pharmacy, College of						
Basic Pharmaceutical Sciences	3	\$442,084	15	\$1,483,893	10	\$1,397,785
Palmetto Poison Center	1	\$5,000	1	\$5,000	0	\$0
Pharmacy & Health Outcomes Sci.	0	\$0	0	\$0	1	\$30,000
Pharmacy Practice	0	\$0	0	\$0	3	\$136,085
Total :	4	\$447,084	16	\$1,488,893	14	\$1,563,870
Provost, Office of the						
TRIO Programs	0	\$0	3	\$1,078,453	0	\$0
Total :	0	\$0	3	\$1,078,453	0	\$0
Public Health, Norman J. Arnold School of						
Communication Sciences & Disorders	1	\$194,080	7	\$618,368	2	\$80,417
Environmental Health Sciences	10	\$1,060,560	24	\$3,035,711	19	\$1,592,122
Epidemiology & Biostatistics	2	\$436,286	26	\$1,782,886	23	\$2,189,432
Exercise Science	0	\$0	20	\$2,230,524	25	\$1,490,986
Health Administration	2	\$5,755	28	\$662,929	18	\$231,998
Health Promotion, Education & Behavior	0	\$0	35	\$2,668,692	29	\$1,341,739
Health Services & Policy Research, Center for	2	\$145,129	6	\$338,250	5	\$519,449
Prevention Research Center	1	\$11,700	12	\$1,477,678	6	\$978,674
Public Health, Norman J. Arnold School of - (Dean)	0	\$0	6	\$2,293,699	0	\$0
Total :	18	\$1,853,510	164	\$15,108,737	127	\$8,424,817
Regional and Four-Year Campuses						
USC Aiken	7	\$396,396	26	\$3,772,104	19	\$1,839,051
USC Beaufort	3	\$42,072	16	\$4,314,055	12	\$246,641
USC Lancaster	0	\$0	6	\$1,112,499	3	\$317,360
USC Salkehatchie	0	\$0	9	\$167,416	4	\$355,543
USC Spartanburg	3	\$411,980	19	\$4,210,336	26	\$1,505,809
USC Sumter	0	\$0	0	\$0	2	\$192,079
USC Union	0	\$0	2	\$496,281	0	\$0
Total :	13	\$850,448	78	\$14,072,691	66	\$4,456,483
Research, Vice President for						
Biomedical Research Infrastructure Network (BRIN)	1	\$299,020	2	\$2,299,020	0	\$0
NanoCenter	0	\$0	6	\$3,815,978	28	\$8,534,189

DEPARTMENT	CURRENT MONTH FEBRUARY - 2003		YEAR TO DATE FY 2003		YEAR TO DATE FY 2002	
Sponsored Programs & Research	0	\$0	0	\$0	1	\$60,000
Technology Incubator	0	\$0	1	\$160,000	0	\$0
Total :	1	\$299,020	9	\$6,274,998	29	\$8,594,189
Science and Mathematics, College of						
Baruch Institute	3	\$2,707,966	18	\$4,075,085	25	\$4,390,638
Biological Sciences	6	\$881,433	54	\$8,351,507	54	\$8,227,302
Chemistry & Biochemistry	11	\$2,054,001	70	\$9,320,591	47	\$7,670,424
COBRE: Center for Colon Cancer Research	1	\$478,768	1	\$478,768	0	\$0
Geological Sciences	10	\$1,107,198	49	\$5,571,752	38	\$3,256,846
Mathematics	1	\$156,836	19	\$1,263,347	13	\$578,903
Physics & Astronomy	5	\$179,737	27	\$3,098,041	21	\$3,819,013
Science & Math Administration	0	\$0	4	\$2,577,055	2	\$2,190,461
Science Education, Center for	0	\$0	2	\$34,845	4	\$325,041
Statistics	0	\$0	20	\$978,113	12	\$252,573
Total :	37	\$7,565,939	264	\$35,749,104	216	\$30,711,201
Social Work, College of						
	4	\$239,574	46	\$1,737,339	42	\$1,092,191
Total :	4	\$239,574	46	\$1,737,339	42	\$1,092,191
Student Affairs, Division of						
Housing & Residential Services	0	\$0	0	\$0	1	\$25,000
Student Health	0	\$0	3	\$41,788	1	\$13,531
Student Life	1	\$14,825	2	\$19,096	3	\$66,411
Total :	1	\$14,825	5	\$60,884	5	\$104,942
University 101						
	0	\$0	1	\$23,925	0	\$0
Total :	0	\$0	1	\$23,925	0	\$0
University Libraries						
Thomas Cooper Library	0	\$0	2	\$98,543	1	\$90,000
Total :	0	\$0	2	\$98,543	1	\$90,000
Report TOTAL :	141	\$21,142,342	1106	\$146,221,778	998	\$110,781,837

* - Biochemistry represents faculty with a dual appointment to the Department of Chemistry and the School of Medicine. The figures are included in both division totals but only once in the overall total.