

MEMORANDUM

TO: Thomas Coggins
Interim Director

FROM: R. Steven Etheredge
Associate Director

DATE: March 9, 2001

RE: Report of Sponsored Program Activity for February 2001

The University received awards totaling \$6.3 million during the month, an 44% decrease compared to last February (\$11.3 million). Total funding for the year-to-date is \$79.5 million, a 1% increase over the same period last fiscal year.

Faculty submitted 127 proposals requesting \$15.9 million compared to 139 and \$21.1 million last February. Thus far in the fiscal year, SPAR has processed 1015 proposals requesting \$123.8 million, compared to last year's totals of 1119 and \$132 million.

cc: K. McCoy

Sponsored Programs and Research Monthly Report

SUMMARY OF AWARDS FEBRUARY - 2001

By Purpose

Research Awards - SPAR	\$4,514,832
Research Awards - SCRI	\$984,109
Training Awards	\$162,233
Service Awards	\$377,462
Equipment Awards	\$195,205
Graduate Assistantship Awards	\$72,965
TOTAL:	\$6,306,806

By Source

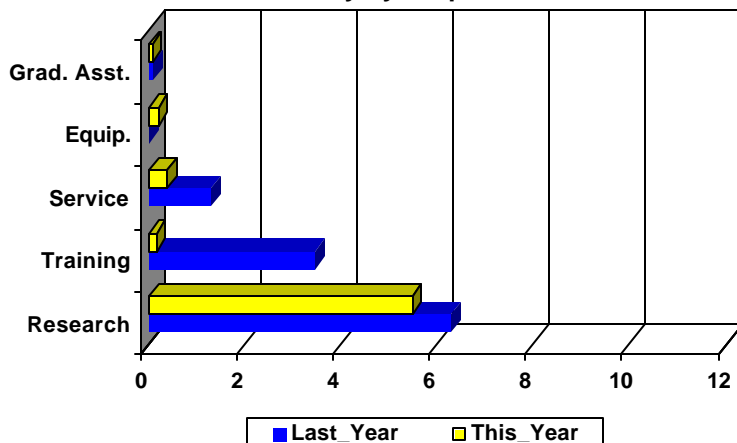
Federal Awards - SPAR	\$4,550,936
Federal Awards - SCR	\$809,685
Private Awards - SPAR	\$458,518
Private Awards - SCR	\$174,424
State Awards	\$313,243
TOTAL:	\$6,306,806

COMPARISON OF AMOUNT RECEIVED

FEBRUARY - 2001 vs. FEBRUARY - 2000

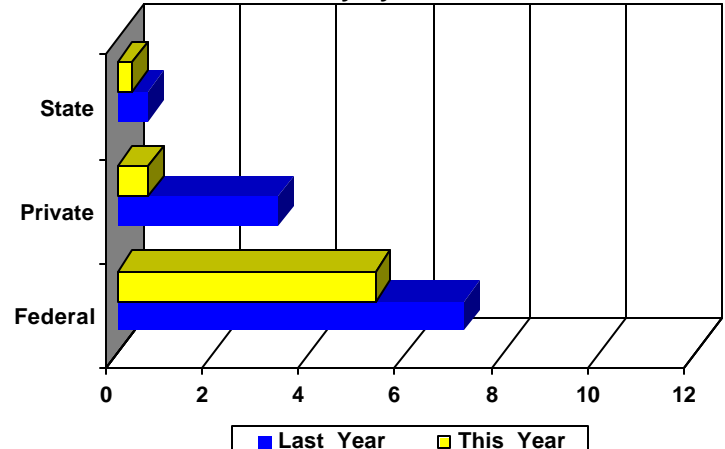
Amounts Received
(In millions of dollars)

Summary by Purpose



Amounts Received
(In millions of dollars)

Summary by Source



AWARDS BY DEPARTMENT

DEPARTMENT	CURRENT MONTH FEBRUARY - 2001		YEAR TO DATE FY 2001		YEAR TO DATE FY 2000	
Business and Finance						
Campus Services	0	\$0	2	\$12,000	1	\$10,000
Total :	0	\$0	2	\$12,000	1	\$10,000
College of Criminal Justice						
	0	\$0	6	\$308,428	8	\$227,886
Total :	0	\$0	6	\$308,428	8	\$227,886
College of Education						
Education	1	\$10,000	2	\$16,054	3	\$18,176
Education Leadership & Policies	0	\$0	12	\$498,535	12	\$313,923
Educational Psychology	1	\$6,933	6	\$335,812	6	\$81,355
Instruction & Teacher Education	1	\$74,538	10	\$1,288,359	11	\$1,910,705
Office of Research	0	\$0	1	\$14,295	2	\$23,395
Physical Education	0	\$0	1	\$122,200	3	\$37,250
SC Educational Policy Center	0	\$0	3	\$192,816	1	\$100,000
School Improvement Council Assistance	0	\$0	0	\$0	1	\$87,500
USC Children's Center	0	\$0	0	\$0	1	\$5,000
Total :	3	\$91,471	35	\$2,468,071	40	\$2,577,304
College of Engineering & Information						
Chemical Engineering	6	\$644,314	29	\$2,064,223	25	\$2,303,939
Civil & Environmental Engineering	3	\$309,871	13	\$1,660,990	19	\$1,405,188
Computer Science & Engineering	3	\$12,001	23	\$319,074	0	\$0
Electrical Engineering	2	\$1,293,284	13	\$12,355,984	17	\$6,184,791
Engineering & Information Technology, College of	0	\$0	3	\$273,862	5	\$2,870,011
IMS - Engineering	0	\$0	0	\$0	1	\$102,709
Mechanical Engineering	3	\$21,682	25	\$1,910,642	19	\$887,422
SCAMP	0	\$0	4	\$902,200	3	\$742,147
Total :	17	\$2,281,152	110	\$19,486,975	89	\$14,496,207
College of Hospitality, Retail & Sports						
Hospitality, Retail & Sports Mgmt - Dean's Office	0	\$0	2	\$64,500	2	\$40,800
Hotel, Restaurant & Tourism Administration	0	\$0	0	\$0	3	\$40,577
Sport Administration	0	\$0	1	\$13,000	0	\$0
Total :	0	\$0	3	\$77,500	5	\$81,377
College of Journalism & Mass						
	1	\$52,264	18	\$414,105	23	\$289,657
Total :	1	\$52,264	18	\$414,105	23	\$289,657
College of Liberal Arts						
Anthropology	0	\$0	1	\$9,657	1	\$2,520
Archaeology & Anthropology, Institute of	2	\$75,756	8	\$516,851	7	\$1,668,328
Art	0	\$0	1	\$2,500	3	\$6,168
English	0	\$0	3	\$13,485	0	\$0
Geography	2	\$71,019	17	\$897,926	16	\$688,201
Government & International Studies	0	\$0	9	\$62,778	14	\$101,253
History	1	\$2,000	21	\$114,915	15	\$65,860
Institute for Southern Studies	0	\$0	2	\$100,000	0	\$0

DEPARTMENT	CURRENT MONTH FEBRUARY - 2001		YEAR TO DATE FY 2001		YEAR TO DATE FY 2000	
International Studies, Institute of	0	\$0	2	\$128,997	0	\$0
Liberal Arts Dean's Office	0	\$0	0	\$0	1	\$9,407
McKissick Museum	0	\$0	3	\$67,859	3	\$114,420
Naval Science	1	\$500	4	\$6,100	2	\$4,000
Philosophy	0	\$0	2	\$36,900	2	\$43,800
Psychology	0	\$0	28	\$1,462,011	26	\$1,855,865
Religious Studies	0	\$0	0	\$0	1	\$100,000
Sociology	0	\$0	2	\$168,976	7	\$233,729
Trio Programs	0	\$0	5	\$1,098,762	3	\$797,593
Total :	6	\$149,275	108	\$4,687,717	101	\$5,691,144
College of Library & Information Science	0	\$0	3	\$35,341	7	\$76,435
Total :	0	\$0	3	\$35,341	7	\$76,435
College of Nursing						
Academic & Student Affairs	0	\$0	8	\$755,598	13	\$870,812
Administrative & Clinical Nursing	1	\$5,000	3	\$97,144	2	\$337,358
Family & Community Health Nursing	0	\$0	5	\$241,841	7	\$126,270
Total :	1	\$5,000	16	\$1,094,583	22	\$1,334,440
College of Pharmacy						
Basic Pharmaceutical Sciences	0	\$0	6	\$243,843	12	\$788,507
Clinical Pharmacy	0	\$0	4	\$100,000	7	\$147,020
Palmetto Poison Center	0	\$0	2	\$45,000	0	\$0
Pharmacy Practice	0	\$0	9	\$238,197	7	\$190,262
Total :	0	\$0	21	\$627,040	26	\$1,125,789
College of Science and Math						
Baruch Institute	3	\$236,160	19	\$1,489,717	14	\$875,314
Biological Sciences	2	\$267,487	31	\$2,246,231	33	\$2,747,901
Center For Science Education	1	\$69,416	3	\$104,695	1	\$7,500
Chemistry & Biochemistry	4	\$132,833	45	\$3,271,570	41	\$3,527,198
Computer Science	0	\$0	1	\$19,266	8	\$148,622
EPSCoR	0	\$0	7	\$211,885	29	\$1,492,496
Geological Sciences	3	\$122,993	25	\$1,309,064	30	\$2,405,673
Mathematics	2	\$170,379	10	\$580,365	4	\$261,006
Physics & Astronomy	1	\$5,648	13	\$1,389,548	13	\$1,373,699
Science & Math Administration	0	\$0	7	\$904,500	0	\$0
Statistics	3	\$126,474	14	\$521,131	10	\$360,708
Total :	19	\$1,131,390	175	\$12,047,972	183	\$13,200,117
College of Social Work	4	\$227,895	44	\$5,766,333	57	\$6,135,231
Total :	4	\$227,895	44	\$5,766,333	57	\$6,135,231
Darla Moore School of Business						
Business Administration - Division Of Research	5	\$47,805	47	\$778,205	37	\$640,868
Small Business Development Center	2	\$151,188	8	\$774,494	10	\$1,379,809
Total :	7	\$198,993	55	\$1,552,699	47	\$2,020,677
Division of Student Affairs						

DEPARTMENT	CURRENT MONTH FEBRUARY - 2001		YEAR TO DATE FY 2001		YEAR TO DATE FY 2000	
International Programs for Students	0	\$0	1	\$3,000	1	\$2,125
Student Health	0	\$0	0	\$0	2	\$282,110
Student Life	0	\$0	2	\$211,571	1	\$29,946
Total :	0	\$0	3	\$214,571	4	\$314,181
Earth Sciences & Resources Institute	2	\$643,657	5	\$848,655	13	\$61,235
Total :	2	\$643,657	5	\$848,655	13	\$61,235
Institute for Families in Society						
Families in Society, Institute for	5	\$286,923	21	\$2,240,286	19	\$2,152,310
Total :	5	\$286,923	21	\$2,240,286	19	\$2,152,310
Institute of Public Affairs	2	\$29,400	22	\$751,065	25	\$1,511,644
Total :	2	\$29,400	22	\$751,065	25	\$1,511,644
Institutional Planning						
Instructional Services Center	0	\$0	0	\$0	1	\$26,518
Total :	0	\$0	0	\$0	1	\$26,518
Law School						
Law School	0	\$0	11	\$1,188,878	8	\$1,250,129
Total :	0	\$0	11	\$1,188,878	8	\$1,250,129
Norman J. Arnold School of Public Health						
Communication Sciences & Disorders	1	\$25,000	1	\$25,000	2	\$138,710
Environmental Health Sciences	5	\$127,310	27	\$1,462,314	23	\$2,109,745
Epidemiology & Biostatistics	3	\$85,355	24	\$2,323,074	21	\$1,957,017
Exercise Science	1	\$1,500	12	\$1,122,028	14	\$928,756
Health Administration	3	\$5,877	34	\$675,169	46	\$216,176
Health Promotion & Education	6	\$357,319	37	\$1,418,985	38	\$583,969
Norman J. Arnold School of Public Health - Dean	0	\$0	2	\$492,197	12	\$1,181,001
Prevention Research Center	1	\$5,240	18	\$2,251,315	30	\$3,526,789
Total :	20	\$607,601	155	\$9,770,082	186	\$10,642,163
Regional and Four-Year Campuses						
Regional Campuses & Continuing Education	0	\$0	1	\$32,100	0	\$0
USC Aiken	3	\$91,478	17	\$1,186,586	17	\$1,045,056
USC Beaufort	0	\$0	8	\$429,987	7	\$304,129
USC Lancaster	0	\$0	5	\$435,432	3	\$303,681
USC Salkehatchie	0	\$0	2	\$228,182	1	\$194,688
USC Spartanburg	3	\$20,006	36	\$1,333,917	47	\$1,437,427
USC Sumter	0	\$0	6	\$401,732	1	\$194,688
USC Union	0	\$0	1	\$198,582	1	\$194,688
Total :	6	\$111,484	76	\$4,246,518	77	\$3,674,357
School of Medicine						
Biochemistry *	1	\$2,833	14	\$1,062,491	14	\$1,064,064
Cell Biology & Neurosciences	1	\$222,856	5	\$678,090	5	\$275,174

DEPARTMENT	CURRENT MONTH FEBRUARY - 2001		YEAR TO DATE FY 2001		YEAR TO DATE FY 2000	
Computer and Communications Resources	0	\$0	0	\$0	1	\$30,000
Developmental Biology & Anatomy	0	\$0	5	\$522,672	5	\$703,320
Family & Preventive Medicine	0	\$0	5	\$849,326	10	\$663,766
Health & Safety	0	\$0	1	\$10,000	1	\$4,800
Internal Medicine	3	\$7,787	26	\$395,276	28	\$1,016,764
Microbiology & Immunology	0	\$0	4	\$661,861	2	\$321,005
Neuropsychiatry	1	\$2,000	6	\$270,390	18	\$393,137
Obstetrics & Gynecology	0	\$0	2	\$70,525	3	\$126,734
Orthopaedic Surgery	0	\$0	2	\$7,250	0	\$0
Pathology	0	\$0	3	\$194,750	3	\$267,472
Pediatrics/Center for Developmental Disabilities	2	\$112,352	24	\$2,809,251	20	\$4,209,212
Pharmacology & Physiology	1	\$8,500	7	\$198,221	3	\$156,045
Radiology	0	\$0	1	\$400,313	1	\$481,407
Research & Special Projects	0	\$0	4	\$435,802	9	\$493,547
School of Medicine Graduate Program	0	\$0	1	\$17,680	0	\$0
South Carolina Cancer Center	0	\$0	2	\$11,711	0	\$0
Surgery	0	\$0	0	\$0	1	\$7,692
Total :	9	\$356,328	112	\$8,595,609	124	\$10,214,139
School of Music	0	\$0	0	\$0	2	\$99,400
Total :	0	\$0	0	\$0	2	\$99,400
School of the Environment	1	\$136,806	4	\$150,450	3	\$788,946
Total :	1	\$136,806	4	\$150,450	3	\$788,946
University Libraries						
Thomas Cooper Library	0	\$0	2	\$260,297	4	\$57,237
Total :	0	\$0	2	\$260,297	4	\$57,237
University Press	0	\$0	0	\$0	1	\$3,000
Total :	0	\$0	0	\$0	1	\$3,000
Vice President for Research						
EPSCoR	0	\$0	24	\$1,387,564	0	\$0
Sponsored Programs & Research	0	\$0	1	\$20,000	0	\$0
Vice President for Research	0	\$0	2	\$2,300,000	5	\$1,800,000
Total :	0	\$0	27	\$3,707,564	5	\$1,800,000
Report TOTAL :	102	\$6,306,806	1020	\$79,490,248	1067	\$78,797,459

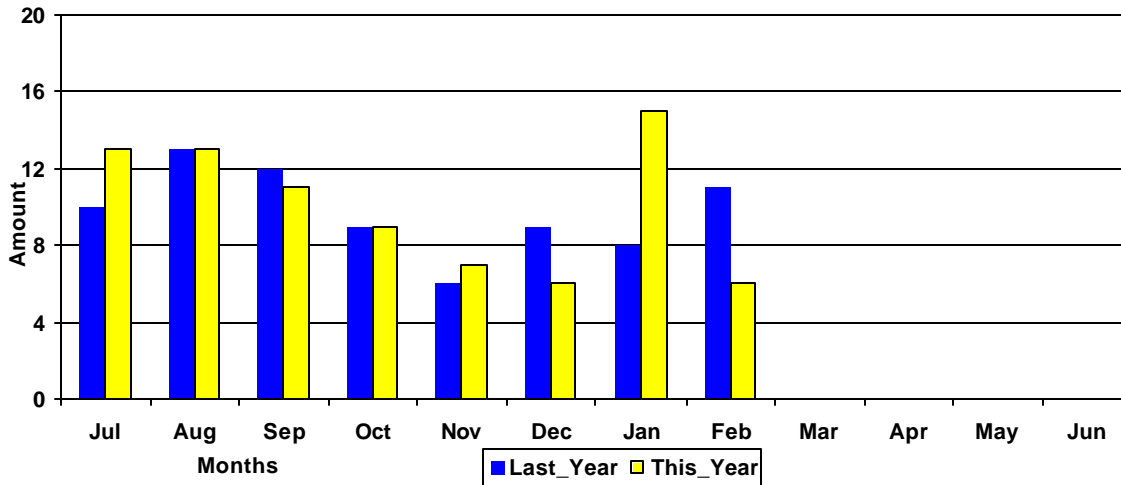
* - Biochemistry represents faculty with a dual appointment to the Department of Chemistry and the School of Medicine. The figures are included in both division totals but only once in the overall total.

Funding Agency Comparison Report

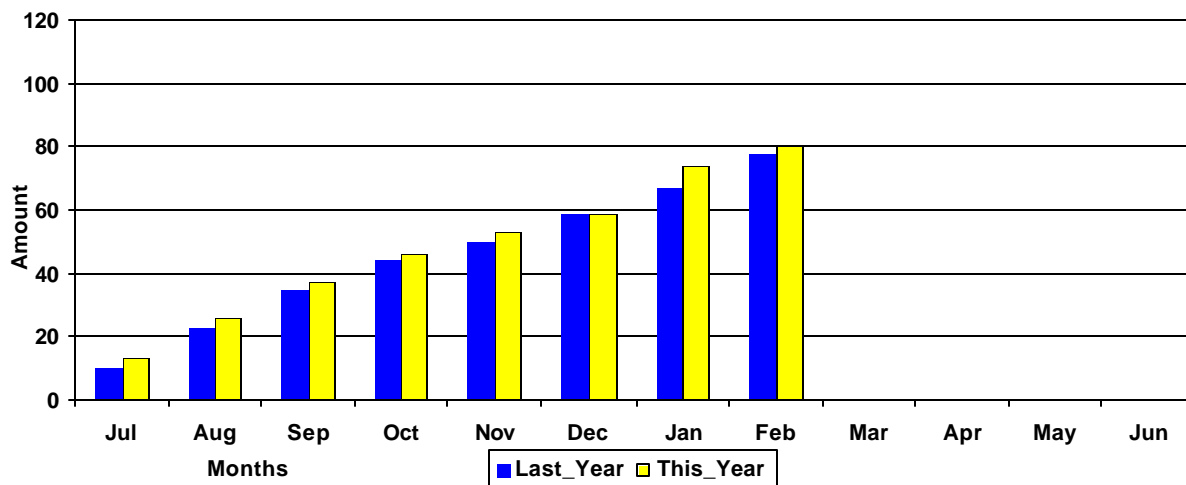
Year-To-Date -FEBRUARY - 2001

		<u>FISCAL YEAR - 2001</u>		<u>FISCAL YEAR - 2000</u>	
NSF Awards	69	\$4,908,818	77	\$6,203,699	
NIH Awards	63	\$6,637,185	63	\$8,107,136	
Dept. Of Defense Awards	53	\$15,802,575	29	\$8,092,105	
Dept. Of Education Awards	58	\$7,641,358	37	\$5,962,588	
Dept. Of Energy Awards	42	\$3,525,028	28	\$4,411,918	
SCUREF Awards from DOE	7	\$469,600	10	\$893,039	
State and Municipalities Awards	184	\$10,304,279	221	\$12,943,967	

Amounts Awarded
(In millions of dollars)



Cumulative Amounts Awarded
(In millions of dollars)



PROPOSALS BY DEPARTMENT

DEPARTMENT	CURRENT MONTH FEBRUARY - 2001		YEAR TO DATE FY 2001		YEAR TO DATE FY 2000	
Business and Finance						
Campus Services	0	\$0	1	\$2,000	0	\$0
Total :	0	\$0	1	\$2,000	0	\$0
College of Criminal Justice						
	1	\$125,000	6	\$321,223	6	\$292,770
Total :	1	\$125,000	6	\$321,223	6	\$292,770
College of Education						
Education	0	\$0	0	\$0	2	\$390,460
Education Leadership & Policies	0	\$0	9	\$155,789	6	\$278,875
Educational Psychology	0	\$0	9	\$829,958	11	\$1,061,553
Instruction & Teacher Education	2	\$367,372	14	\$3,332,174	8	\$3,201,720
Office of Research	0	\$0	0	\$0	1	\$17,888
Physical Education	0	\$0	2	\$142,200	4	\$190,500
SC Educational Policy Center	0	\$0	2	\$92,816	0	\$0
School Improvement Council Assistance	0	\$0	0	\$0	2	\$91,900
USC Children's Center	1	\$2,000	2	\$32,000	0	\$0
Total :	3	\$369,372	38	\$4,584,937	34	\$5,232,896
College of Engineering & Information						
Chemical Engineering	8	\$1,726,738	33	\$6,841,959	47	\$7,092,990
Civil & Environmental Engineering	4	\$250,053	14	\$967,568	29	\$2,449,571
Computer Science & Engineering	5	\$272,921	30	\$1,816,751	0	\$0
Electrical Engineering	0	\$0	9	\$6,357,402	29	\$18,362,037
Engineering & Information Technology, College of	0	\$0	2	\$225,000	3	\$2,648,976
IMS - Engineering	0	\$0	0	\$0	1	\$50,000
Mechanical Engineering	5	\$1,012,815	35	\$4,084,480	51	\$5,132,949
SCAMP	0	\$0	2	\$812,000	2	\$610,000
Total :	22	\$3,262,527	125	\$21,105,160	162	\$36,346,523
College of Hospitality, Retail & Sports						
Center For Retailing Studies	0	\$0	0	\$0	1	\$237,834
Hospitality, Retail & Sports Mgmt - Dean's Office	0	\$0	1	\$25,000	2	\$62,300
Hotel, Restaurant & Tourism Administration	1	\$9,600	1	\$9,600	3	\$66,402
Sport Administration	0	\$0	1	\$13,000	0	\$0
Total :	1	\$9,600	3	\$47,600	6	\$366,536
College of Journalism & Mass						
	1	\$11,000	17	\$494,762	22	\$500,346
Total :	1	\$11,000	17	\$494,762	22	\$500,346
College of Liberal Arts						
Anthropology	0	\$0	1	\$72,250	1	\$2,520
Archaeology & Anthropology, Institute of	1	\$80,262	8	\$1,283,810	12	\$1,408,698
Art	0	\$0	2	\$151,916	4	\$823,408
English	1	\$35,000	4	\$54,750	1	\$44,116
French & Classics	0	\$0	0	\$0	1	\$9,989
Geography	0	\$0	8	\$390,687	10	\$787,333
Government & International Studies	1	\$116,116	7	\$208,167	12	\$151,738

DEPARTMENT	CURRENT MONTH FEBRUARY - 2001		YEAR TO DATE FY 2001		YEAR TO DATE FY 2000	
History	0	\$0	15	\$218,933	13	\$191,085
Institute for Southern Studies	1	\$262,040	1	\$262,040	1	\$49,061
International Studies, Institute of	0	\$0	1	\$37,946	1	\$130,795
Linguistics Program	0	\$0	2	\$41,892	0	\$0
McKissick Museum	0	\$0	3	\$112,255	3	\$17,189
Philosophy	1	\$5,000	2	\$19,829	3	\$296,762
Psychology	3	\$618,909	32	\$8,305,195	29	\$5,573,529
Religious Studies	1	\$35,000	1	\$35,000	0	\$0
Sociology	0	\$0	7	\$242,003	5	\$242,354
Spanish, Italian, & Portuguese	0	\$0	1	\$49,941	0	\$0
Trio Programs	0	\$0	2	\$367,697	1	\$231,814
Total :	9	\$1,152,327	97	\$11,854,311	97	\$9,960,391
College of Library & Information Science	0	\$0	5	\$135,449	7	\$167,811
Total :	0	\$0	5	\$135,449	7	\$167,811
College of Nursing						
Academic & Student Affairs	0	\$0	5	\$183,743	1	\$20,000
Administrative & Clinical Nursing	0	\$0	5	\$163,000	2	\$323,474
Family & Community Health Nursing	0	\$0	2	\$2,418,860	4	\$1,104,259
Total :	0	\$0	12	\$2,765,603	7	\$1,447,733
College of Pharmacy						
Basic Pharmaceutical Sciences	4	\$291,582	16	\$1,672,118	9	\$1,592,036
Clinical Pharmacy	1	\$15,700	4	\$136,428	3	\$118,000
Palmetto Poison Center	0	\$0	2	\$133,957	0	\$0
Pharmacy Practice	0	\$0	9	\$341,440	4	\$114,680
Total :	5	\$307,282	31	\$2,283,943	16	\$1,824,716
College of Science and Math						
Baruch Institute	11	\$273,482	22	\$1,205,744	29	\$2,466,453
Biological Sciences	7	\$219,403	57	\$6,663,665	77	\$6,454,616
Center For Science Education	0	\$0	3	\$130,986	2	\$32,423
Chemistry & Biochemistry	7	\$2,845,587	61	\$11,404,093	50	\$11,395,686
Computer Science	0	\$0	0	\$0	10	\$390,949
EPSCoR	0	\$0	1	\$40,000	14	\$2,629,341
Geological Sciences	9	\$1,102,283	38	\$3,619,322	42	\$3,796,732
Mathematics	0	\$0	13	\$766,827	15	\$1,088,458
Physics & Astronomy	3	\$391,930	25	\$8,283,578	23	\$7,434,458
Science & Math Administration	0	\$0	8	\$1,574,415	0	\$0
Statistics	2	\$76,406	10	\$432,312	15	\$356,923
Total :	39	\$4,909,091	238	\$34,120,942	277	\$36,046,039
College of Social Work	3	\$558,641	44	\$6,634,645	43	\$1,453,419
Total :	3	\$558,641	44	\$6,634,645	43	\$1,453,419
Darla Moore School of Business						
Business Administration - Division Of Research	6	\$156,855	45	\$752,474	29	\$341,139
Small Business Development Center	0	\$0	3	\$2,386,650	2	\$1,166,921
Total :	6	\$156,855	48	\$3,139,124	31	\$1,508,060

DEPARTMENT	CURRENT MONTH FEBRUARY - 2001		YEAR TO DATE FY 2001		YEAR TO DATE FY 2000	
Division of Student Affairs						
International Programs for Students	0	\$0	0	\$0	1	\$4,250
Student Health	0	\$0	0	\$0	3	\$425,652
Student Life	1	\$133,952	2	\$153,362	0	\$0
Total :	1	\$133,952	2	\$153,362	4	\$429,902
Earth Sciences & Resources Institute	2	\$1,962,616	5	\$3,410,803	17	\$834,528
Total :	2	\$1,962,616	5	\$3,410,803	17	\$834,528
English Program for Internationals						
English Program For Internationals	0	\$0	1	\$232,149	0	\$0
Total :	0	\$0	1	\$232,149	0	\$0
Equal Opportunity Programs	0	\$0	0	\$0	1	\$20,000
Total :	0	\$0	0	\$0	1	\$20,000
Institute for Families in Society						
Families in Society, Institute for	1	\$193,489	11	\$1,379,748	17	\$1,780,475
Total :	1	\$193,489	11	\$1,379,748	17	\$1,780,475
Institute of Public Affairs	4	\$70,902	33	\$2,033,633	38	\$2,213,304
Total :	4	\$70,902	33	\$2,033,633	38	\$2,213,304
Institutional Planning						
Law Enforcement & Safety	0	\$0	2	\$67,528	1	\$253,597
Total :	0	\$0	2	\$67,528	1	\$253,597
Law School						
Law School	0	\$0	11	\$1,332,522	6	\$913,091
Total :	0	\$0	11	\$1,332,522	6	\$913,091
Norman J. Arnold School of Public Health						
Communication Sciences & Disorders	0	\$0	1	\$199,011	8	\$536,566
Environmental Health Sciences	3	\$230,850	16	\$949,098	20	\$2,943,699
Epidemiology & Biostatistics	5	\$1,392,366	26	\$4,686,114	22	\$2,276,129
Exercise Science	2	\$24,600	16	\$1,130,198	15	\$1,460,505
Health Administration	1	\$1,500	32	\$187,465	51	\$391,084
Health Promotion & Education	5	\$125,814	28	\$698,026	36	\$484,685
Norman J. Arnold School of Public Health - Dean	0	\$0	2	\$1,338,100	11	\$2,031,615
Prevention Research Center	0	\$0	8	\$846,039	10	\$2,324,970
Total :	16	\$1,775,130	129	\$10,034,051	173	\$12,449,252
Regional and Four-Year Campuses						
USC Aiken	0	\$0	14	\$633,869	14	\$1,060,123
USC Beaufort	0	\$0	10	\$536,197	11	\$206,486
USC Lancaster	0	\$0	3	\$370,165	1	\$11,993

DEPARTMENT	CURRENT MONTH FEBRUARY - 2001		YEAR TO DATE FY 2001		YEAR TO DATE FY 2000	
USC Salkehatchie	1	\$43,000	6	\$480,668	3	\$232,688
USC Spartanburg	0	\$0	16	\$990,280	32	\$942,179
USC Sumter	0	\$0	6	\$962,900	1	\$194,688
USC Union	0	\$0	1	\$299,376	0	\$0
Total :	1	\$43,000	56	\$4,273,455	62	\$2,648,157
School of Medicine						
Animal Resources Facility	0	\$0	1	\$128,159	0	\$0
Biochemistry *	0	\$0	5	\$1,153,637	7	\$1,513,838
Cell Biology & Neurosciences	0	\$0	3	\$398,502	1	\$149,223
Developmental Biology & Anatomy	0	\$0	17	\$2,213,275	15	\$1,792,356
Family & Preventive Medicine	1	\$10,997	6	\$593,692	6	\$1,560,834
Internal Medicine	0	\$0	5	\$828,514	8	\$423,273
Microbiology & Immunology	0	\$0	3	\$548,975	6	\$1,145,355
Neuropsychiatry	3	\$403,331	5	\$811,491	4	\$94,223
Obstetrics & Gynecology	0	\$0	1	\$59,000	2	\$125,234
Orthopaedic Surgery	0	\$0	0	\$0	1	\$12,500
Pathology	0	\$0	7	\$1,076,089	8	\$858,430
Pediatrics/Center for Developmental Disabilities	2	\$40,400	11	\$559,996	13	\$2,421,261
Pharmacology & Physiology	1	\$289,000	14	\$1,283,124	10	\$778,800
Radiology	0	\$0	1	\$400,313	0	\$0
Research & Special Projects	0	\$0	0	\$0	1	\$70,037
School of Medicine Graduate Program	0	\$0	2	\$17,680	0	\$0
South Carolina Cancer Center	0	\$0	2	\$11,711	0	\$0
Surgery	2	\$127,640	3	\$196,640	3	\$209,150
Total :	9	\$871,368	86	\$10,280,798	85	\$11,154,514
School of Music						
	0	\$0	0	\$0	2	\$560,765
Total :	0	\$0	0	\$0	2	\$560,765
School of the Environment						
	1	\$57,301	7	\$1,668,023	5	\$3,176,918
Total :	1	\$57,301	7	\$1,668,023	5	\$3,176,918
South Carolina Honors College						
	1	\$7,500	4	\$155,939	5	\$143,432
Total :	1	\$7,500	4	\$155,939	5	\$143,432
University Libraries						
Libraries & Collections	0	\$0	2	\$7,350	0	\$0
Thomas Cooper Library	1	\$1,020	2	\$167,898	1	\$35,070
Total :	1	\$1,020	4	\$175,248	1	\$35,070
University Press						
	0	\$0	1	\$10,000	0	\$0
Total :	0	\$0	1	\$10,000	0	\$0
Vice President for Research						
EPSCoR	0	\$0	2	\$232,658	0	\$0
Vice President for Research - General	0	\$0	1	\$2,000,000	1	\$1,800,000
Total :	0	\$0	3	\$2,232,658	1	\$1,800,000

DEPARTMENT	CURRENT MONTH FEBRUARY - 2001		YEAR TO DATE FY 2001		YEAR TO DATE FY 2000	
Report TOTAL :	127	\$15,977,973	1015	\$123,775,978	1119	\$132,046,406

* - Biochemistry represents faculty with a dual appointment to the Department of Chemistry and the School of Medicine. The figures are included in both division totals but only once in the overall total.