

**MEMORANDUM**

To: Harris Pastides, Ph.D.  
 Interim Vice President for Research

From: Anthony M. Boccanfuso, Ph.D.  
 Managing Director

RE: Report of Sponsored Program Activity for December 2002

Date: January 13, 2003

The month of December and year-to-date continue to look positive.

- December 2002 awards totaled \$4.2M of new funding, an increase of \$871,318 from December 2001.
- Total awards (research, service, training) through December reached \$69.4M (compared to \$52.6M in FY2002), an increase of thirty-two (32%) when compared to last year's number.
- Faculty submitted 122 proposals requesting \$15.7 million during December. Thus far in the fiscal year, SPAR has processed 771 proposals requesting \$94 million, compared to last year's totals of 710 and \$73.4 million.

	December FY03	YTD FY02	YTD FY03	YTD Change
Award Dollars	\$4,189,610	\$52,599,330	\$69,393,207	32%
Research Direct Expenditures	4,076,057	27,936,968	27,841,869	0%
Research IDC Expenditures	1,060,944	7,272,418	7,218,748	(1)%
Proposals Submitted	122	710	771	9%
Proposal Dollars Requested	\$15,653,509	\$73,415,762	\$94,227,803	29%

Notable Changes in Award Activity	July to December FY02	July to December FY03
Engineering & Information Technology	\$8,546,454	\$7,124,939
Families in Society, Institute for	\$1,483,067	\$2,047,339
Liberal Arts, College of	\$2,485,345	\$6,317,928
Medicine, School of	\$7,149,384	\$9,039,804
Public Health, NJA	\$11,735,454	\$17,900,089
Research, Vice President for	\$730,022	\$2,088,881
Science and Mathematics, College of	\$8,456,234	\$14,180,456

cc: Andrew A. Sorensen, Ph.D.  
 Jerome D. Odom, Ph.D.  
 William Harris, Ph.D.  
 R. Steven Etheredge  
 Richard Kelly

## *December Featured Awards*

### **Engineering & Information Technology, College of**

#### *Mechanical Engineering*

**Sutton, Michael**

**Reynolds, Anthony**

**Deng, Xiaomin**

*Crack Growth and Stress Intensity Prediction Techniques - (FA05)*

USCRF/Air Force Research Laboratory/DOD

**\$153,999**

### **Liberal Arts, College of**

#### *Psychology*

**Wandersman, Abraham**

*Participatory Research of an Empowerment Evaluation System - (FA14)*

USCRF/RAND Corporation/CDC

**\$135,561**

### **Medicine, School of**

#### *Research & Special Projects*

**Howe, Duncan**

*Parenting Skills Home Visitation Services, Marlboro County First Steps - (GL04)*

Marlboro County First Steps

**\$91,400**

### **Public Health, Norman J. Arnold School of**

#### *Epidemiology & Biostatistics*

**Hebert, James**

*Purchase and Provision of Services to Maintain the Alzheimer's Disease Registry and to Provide Educational Training and Program Development and Evaluation*

- (FA07)

SC Department of Health & Human Services/HHS

**\$576,721**

#### *Exercise Science*

**Wilcox, Sara**

*Factors Influencing Physical Activity among People with Arthritis – (FA10)*

USCRF/Association of Schools of Public Health/CDC

**\$112,239**

### **Science and Mathematics, College of**

#### *Chemistry & Biochemistry*

**Berg, Mark**

*Ultrafast DNA Dynamics Using Novel Photophysical Probes - (FA03)*

National Institute of General Medical Sciences (NIGMS)/NIH

**\$193,160**

#### *Geological Sciences*

**Karabanov, Eugene**

*Decadal to Centennial History of Lena River Discharge to the Arctic Ocean - (FA38)*

USCRF/National Science Foundation (NSF) – General

**\$257,570**

### **Social Work, College of**

#### *Social Work, College of*

**Bond, Pamela**

*DHEC HABLA Language Assistance Program - (GL04)*

SC Department of Health & Environmental Control

**\$120,156**

# Sponsored Programs and Research Monthly Report

## SUMMARY OF AWARDS DECEMBER - 2002

### By Purpose

Research Awards	\$3,514,501
Training Awards	\$91,305
Service Awards	\$447,404
Equipment Awards	\$104,116
Graduate Assistantship Awards	\$32,284
<b>TOTAL:</b>	<b>\$4,189,610</b>

### By Source

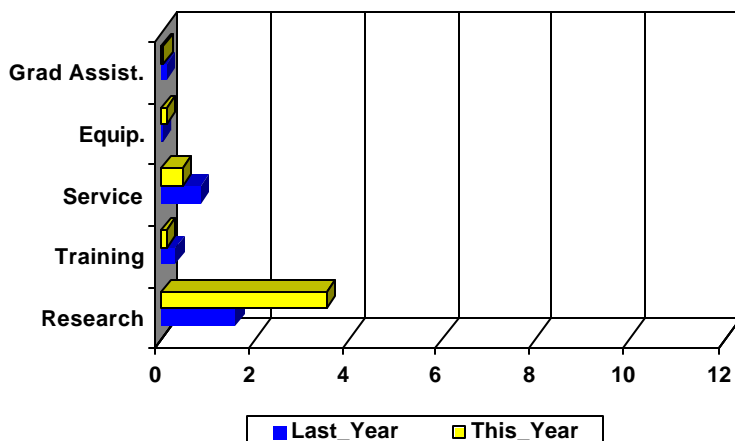
Federal Awards	\$3,277,233
Private Awards	\$534,811
State Awards	\$377,566
<b>TOTAL:</b>	<b>\$4,189,610</b>

## COMPARISON OF AMOUNT RECEIVED

DECEMBER - 2002 vs. DECEMBER - 2001

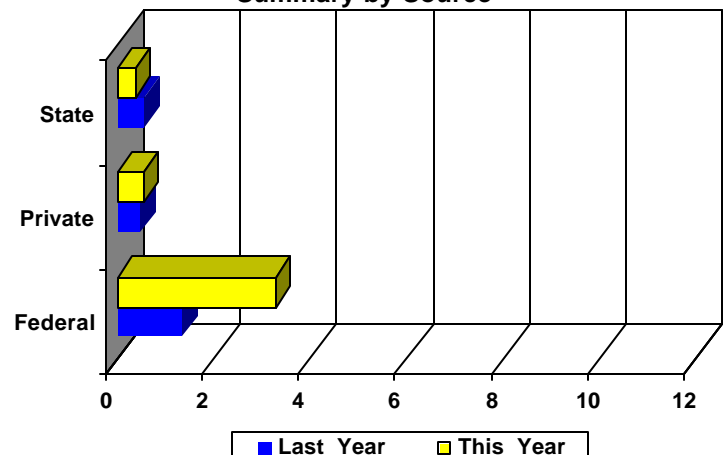
Amounts Received  
(In millions of dollars)

Summary by Purpose



Amounts Received  
(In millions of dollars)

Summary by Source



## AWARDS BY DEPARTMENT

DEPARTMENT	CURRENT MONTH DECEMBER - 2002		YEAR TO DATE FY 2003		YEAR TO DATE FY 2002	
<b>Business &amp; Finance</b>						
Recycling & Waste Management	0	\$0	0	\$0	1	\$9,970
<b>Total :</b>	<b>0</b>	<b>\$0</b>	<b>0</b>	<b>\$0</b>	<b>1</b>	<b>\$9,970</b>
<b>Business, Moore School of</b>						
Business Administration - Division of Research	1	\$46,516	22	\$588,703	40	\$796,846
Small Business Development Center	1	\$20,000	1	\$20,000	3	\$187,500
<b>Total :</b>	<b>2</b>	<b>\$66,516</b>	<b>23</b>	<b>\$608,703</b>	<b>43</b>	<b>\$984,346</b>
<b>Education, College of</b>						
Education	0	\$0	2	\$114,999	1	\$27,500
Education Leadership & Policies	1	\$19,881	5	\$215,408	5	\$197,682
Educational Psychology	0	\$0	6	\$395,293	10	\$406,707
Instruction & Teacher Education	3	\$90,795	12	\$1,485,292	13	\$1,853,097
Physical Education	0	\$0	1	\$5,000	5	\$57,000
SC Educational Policy Center	0	\$0	0	\$0	1	\$15,500
School Improvement Council Assistance	1	\$12,000	1	\$12,000	2	\$11,000
<b>Total :</b>	<b>5</b>	<b>\$122,676</b>	<b>27</b>	<b>\$2,227,992</b>	<b>37</b>	<b>\$2,568,486</b>
<b>Engineering &amp; Information Technology,</b>						
Chemical Engineering	2	\$305,000	19	\$1,991,108	21	\$2,311,221
Civil & Environmental Engineering	0	\$0	8	\$256,413	9	\$927,381
Computer Science & Engineering	0	\$0	8	\$112,951	7	\$81,708
Electrical Engineering	0	\$0	5	\$3,257,425	7	\$2,274,441
Engineering & Information Technology, College of	1	\$125,000	2	\$141,500	3	\$1,652,495
Mechanical Engineering	1	\$153,999	13	\$1,215,135	13	\$856,536
SC Alliance for Minority Participation (SCAMP)	0	\$0	4	\$150,407	6	\$442,672
<b>Total :</b>	<b>4</b>	<b>\$583,999</b>	<b>59</b>	<b>\$7,124,939</b>	<b>66</b>	<b>\$8,546,454</b>
<b>Enrollment Management</b>						
	0	\$0	1	\$37,583	1	\$33,047
<b>Total :</b>	<b>0</b>	<b>\$0</b>	<b>1</b>	<b>\$37,583</b>	<b>1</b>	<b>\$33,047</b>
<b>Environment, School of the</b>						
Earth Sciences & Resources Institute	0	\$0	4	\$27,050	3	\$226,274
Environment, School of the	0	\$0	5	\$261,034	6	\$223,030
<b>Total :</b>	<b>0</b>	<b>\$0</b>	<b>9</b>	<b>\$288,084</b>	<b>9</b>	<b>\$449,304</b>
<b>Families in Society, Institute for</b>						
	0	\$0	9	\$2,047,339	10	\$1,483,067
<b>Total :</b>	<b>0</b>	<b>\$0</b>	<b>9</b>	<b>\$2,047,339</b>	<b>10</b>	<b>\$1,483,067</b>
<b>Honors College, South Carolina</b>						
	0	\$0	1	\$4,000	1	\$102,676
<b>Total :</b>	<b>0</b>	<b>\$0</b>	<b>1</b>	<b>\$4,000</b>	<b>1</b>	<b>\$102,676</b>
<b>Hospitality, Retail &amp; Sports Management,</b>						
Hospitality, Retail & Sports Mgmt - (Dean)	0	\$0	0	\$0	1	\$62,500
Retailing Studies, Center for	0	\$0	1	\$8,000	1	\$11,429

DEPARTMENT	CURRENT MONTH DECEMBER - 2002		YEAR TO DATE FY 2003		YEAR TO DATE FY 2002	
<b>Total :</b>	<b>0</b>	<b>\$0</b>	<b>1</b>	<b>\$8,000</b>	<b>2</b>	<b>\$73,929</b>
<b>Institutional Planning</b>						
<b>Law, School of</b>						
Law, School of	0	\$0	2	\$475,925	7	\$569,764
<b>Total :</b>	<b>0</b>	<b>\$0</b>	<b>2</b>	<b>\$475,925</b>	<b>7</b>	<b>\$569,764</b>
<b>Liberal Arts, College of</b>						
Archaeology & Anthropology, Institute of	0	\$0	5	\$154,181	7	\$645,349
Art	0	\$0	1	\$1,200	0	\$0
Criminology & Criminal Justice, Department of	0	\$0	1	\$24,447	1	\$32,596
English	0	\$0	0	\$0	2	\$45,000
Geography	2	\$38,200	10	\$503,038	12	\$612,014
Government & International Studies	0	\$0	4	\$18,612	4	\$49,298
History	0	\$0	11	\$133,938	16	\$48,306
Liberal Arts - (Dean)	0	\$0	0	\$0	1	\$6,000
McKissick Museum	0	\$0	3	\$132,677	3	\$7,750
Naval Science	0	\$0	2	\$4,000	2	\$4,000
Philosophy	1	\$10,000	1	\$10,000	2	\$40,544
Psychology	3	\$283,827	33	\$2,615,466	14	\$365,920
Public Service & Policy Research, Institute for	0	\$0	11	\$2,594,745	12	\$544,772
Religious Studies	0	\$0	1	\$25,000	1	\$50,000
Sociology	0	\$0	1	\$90,424	1	\$6,018
Southern Studies, Institute for	0	\$0	1	\$10,200	1	\$27,778
<b>Total :</b>	<b>6</b>	<b>\$332,027</b>	<b>85</b>	<b>\$6,317,928</b>	<b>79</b>	<b>\$2,485,345</b>
<b>Mass Communications &amp; Information</b>						
Journalism & Mass Communications, School of	0	\$0	8	\$464,078	7	\$167,495
Library & Information Sciences, School of	0	\$0	4	\$21,462	4	\$53,565
<b>Total :</b>	<b>0</b>	<b>\$0</b>	<b>12</b>	<b>\$485,540</b>	<b>11</b>	<b>\$221,060</b>
<b>Medicine, School of</b>						
Basic Science Research	0	\$0	1	\$201,938	1	\$209,244
Biochemistry *	1	\$2,834	16	\$1,818,685	14	\$1,191,107
Cancer Center, South Carolina	1	\$29,000	6	\$99,382	5	\$135,968
Cell & Developmental Biology & Anatomy	0	\$0	12	\$999,628	5	\$399,566
Cell Biology & Neurosciences	0	\$0	0	\$0	5	\$375,368
Family & Preventive Medicine	0	\$0	4	\$795,163	6	\$532,273
Health & Safety	0	\$0	0	\$0	1	\$9,600
Internal Medicine	3	\$91,600	14	\$650,356	26	\$879,096
Medicine Library	0	\$0	3	\$244,285	2	\$137,048
Neuropsychiatry	0	\$0	5	\$382,106	6	\$113,477
Obstetrics & Gynecology	0	\$0	2	\$130,165	0	\$0
Ophthalmology	0	\$0	2	\$12,103	0	\$0
Pathology	0	\$0	2	\$25,000	2	\$179,947
Pathology & Microbiology	0	\$0	6	\$603,958	4	\$511,016
Pediatrics/Developmental Disabilities, Center for	0	\$0	14	\$1,754,610	9	\$1,483,274
Pharmacology, Physiology & Neuroscience	0	\$0	6	\$466,874	1	\$71,500
Radiology	0	\$0	1	\$412,435	1	\$401,974
Research & Special Projects	2	\$195,516	9	\$402,866	9	\$334,448
Surgery	2	\$17,340	3	\$40,250	9	\$184,478

DEPARTMENT	CURRENT MONTH DECEMBER - 2002		YEAR TO DATE FY 2003		YEAR TO DATE FY 2002	
<b>Total :</b>	<b>9</b>	<b>\$336,290</b>	<b>106</b>	<b>\$9,039,804</b>	<b>106</b>	<b>\$7,149,384</b>
<b>Nursing, College of</b>						
Academic & Student Affairs	0	\$0	6	\$572,904	12	\$832,071
Administrative & Clinical Nursing	0	\$0	2	\$97,164	1	\$86,003
Family & Community Health Nursing	0	\$0	2	\$233,712	1	\$7,725
<b>Total :</b>	<b>0</b>	<b>\$0</b>	<b>10</b>	<b>\$903,780</b>	<b>14</b>	<b>\$925,799</b>
<b>Pharmacy, College of</b>						
Basic Pharmaceutical Sciences	0	\$0	5	\$363,529	3	\$130,141
Palmetto Poison Center	0	\$0	1	\$210,990	2	\$285,881
Pharmacy & Health Outcomes Sci.	0	\$0	1	\$14,500	2	\$40,243
Pharmacy Practice	1	\$10,650	2	\$23,255	3	\$136,085
<b>Total :</b>	<b>1</b>	<b>\$10,650</b>	<b>9</b>	<b>\$612,274</b>	<b>10</b>	<b>\$592,350</b>
<b>Provost, Office of the</b>						
Provost, Office of the	0	\$0	1	\$4,335	0	\$0
TRIO Programs	0	\$0	5	\$1,253,694	6	\$1,263,162
<b>Total :</b>	<b>0</b>	<b>\$0</b>	<b>6</b>	<b>\$1,258,029</b>	<b>6</b>	<b>\$1,263,162</b>
<b>Public Health, Norman J. Arnold School of</b>						
Communication Sciences & Disorders	1	\$7,141	1	\$7,141	1	\$7,917
Environmental Health Sciences	0	\$0	27	\$1,437,608	40	\$1,546,773
Epidemiology & Biostatistics	6	\$786,251	29	\$2,515,509	22	\$2,738,136
Exercise Science	2	\$115,906	17	\$1,307,613	8	\$771,072
Health Administration	6	\$23,591	23	\$912,448	13	\$616,027
Health Promotion, Education & Behavior	0	\$0	35	\$2,471,793	24	\$424,408
Health Services & Policy Research, Center for	0	\$0	5	\$244,186	5	\$217,300
Prevention Research Center	3	\$441,197	18	\$3,403,541	16	\$2,787,191
Public Health, Norman J. Arnold School of - (Dean)	0	\$0	8	\$5,600,250	3	\$2,626,630
<b>Total :</b>	<b>18</b>	<b>\$1,374,086</b>	<b>163</b>	<b>\$17,900,089</b>	<b>132</b>	<b>\$11,735,454</b>
<b>Regional and Four-Year Campuses</b>						
USC Aiken	0	\$0	12	\$905,787	16	\$870,351
USC Beaufort	0	\$0	5	\$274,120	7	\$204,069
USC Lancaster	0	\$0	3	\$467,971	3	\$240,832
USC Salkehatchie	1	\$109,052	3	\$350,000	4	\$512,747
USC Spartanburg	3	\$4,965	31	\$1,071,115	40	\$1,179,710
USC Sumter	0	\$0	2	\$260,079	4	\$250,208
USC Union	0	\$0	2	\$237,948	1	\$224,471
<b>Total :</b>	<b>4</b>	<b>\$114,017</b>	<b>58</b>	<b>\$3,567,020</b>	<b>75</b>	<b>\$3,482,388</b>
<b>Research, Vice President for</b>						
Biomedical Research Infrastructure Network (BRIN)	0	\$0	6	\$1,087,993	0	\$0
NanoCenter	0	\$0	6	\$763,388	3	\$287,997
Research, Vice President for - (General)	0	\$0	0	\$0	3	\$431,342
Sponsored Programs & Research	0	\$0	1	\$77,500	1	\$10,683
Technology Incubator	0	\$0	1	\$160,000	0	\$0
<b>Total :</b>	<b>0</b>	<b>\$0</b>	<b>14</b>	<b>\$2,088,881</b>	<b>7</b>	<b>\$730,022</b>

DEPARTMENT	CURRENT MONTH DECEMBER - 2002		YEAR TO DATE FY 2003		YEAR TO DATE FY 2002	
<b>Science and Mathematics, College of</b>						
Baruch Institute	3	\$323,499	18	\$4,423,957	13	\$1,374,951
Biological Research & Technology, Institute for	0	\$0	0	\$0	2	\$3,300
Biological Sciences	2	\$246,745	22	\$1,646,144	20	\$2,131,171
Chemistry & Biochemistry	2	\$195,994	26	\$2,354,548	26	\$2,035,892
COBRE: Center for Colon Cancer Research	0	\$0	11	\$2,366,028	0	\$0
Geological Sciences	1	\$257,570	29	\$1,740,026	32	\$1,316,629
Mathematics	0	\$0	2	\$218,001	2	\$155,787
Physics & Astronomy	0	\$0	11	\$463,200	4	\$447,070
Science & Math Administration	0	\$0	5	\$665,091	6	\$743,043
Science Education, Center for	0	\$0	1	\$12,400	1	\$12,400
Statistics	0	\$0	11	\$291,061	7	\$235,991
<b>Total :</b>	<b>8</b>	<b>\$1,023,808</b>	<b>136</b>	<b>\$14,180,456</b>	<b>113</b>	<b>\$8,456,234</b>
<b>Social Work, College of</b>						
	2	\$228,375	37	\$1,897,577	40	\$1,680,102
<b>Total :</b>	<b>2</b>	<b>\$228,375</b>	<b>37</b>	<b>\$1,897,577</b>	<b>40</b>	<b>\$1,680,102</b>
<b>Student Affairs, Division of</b>						
Student Health	0	\$0	1	\$5,672	2	\$83,122
Student Life	0	\$0	2	\$132,277	3	\$153,952
<b>Total :</b>	<b>0</b>	<b>\$0</b>	<b>3</b>	<b>\$137,949</b>	<b>5</b>	<b>\$237,074</b>
<b>University Libraries</b>						
Thomas Cooper Library	0	\$0	0	\$0	2	\$11,020
<b>Total :</b>	<b>0</b>	<b>\$0</b>	<b>0</b>	<b>\$0</b>	<b>2</b>	<b>\$11,020</b>
<b>Report TOTAL :</b>	<b>58</b>	<b>\$4,189,610</b>	<b>755</b>	<b>\$69,393,207</b>	<b>763</b>	<b>\$52,599,330</b>

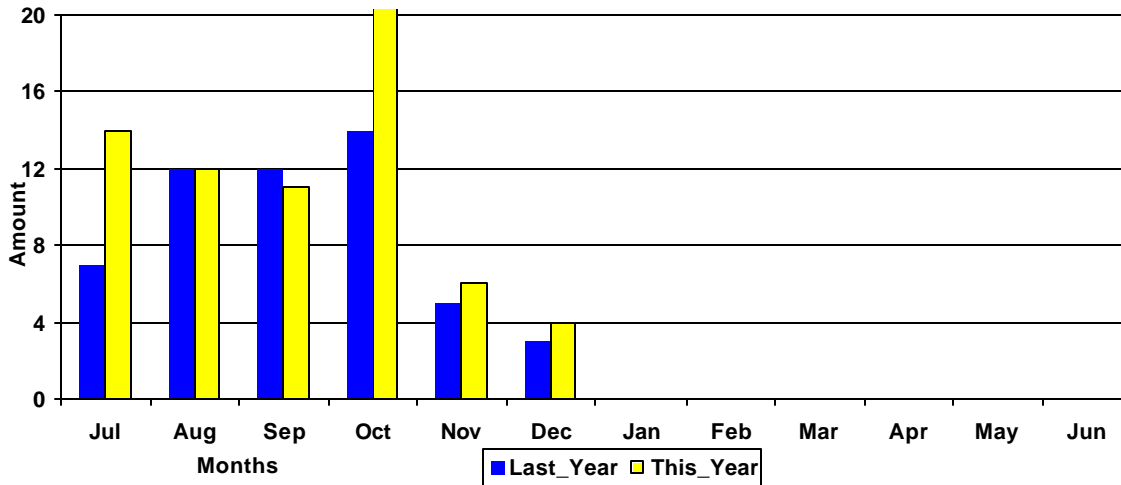
\* - Biochemistry represents faculty with a dual appointment to the Department of Chemistry and the School of Medicine. The figures are included in both division totals but only once in the overall total.

# Funding Agency Comparison Report

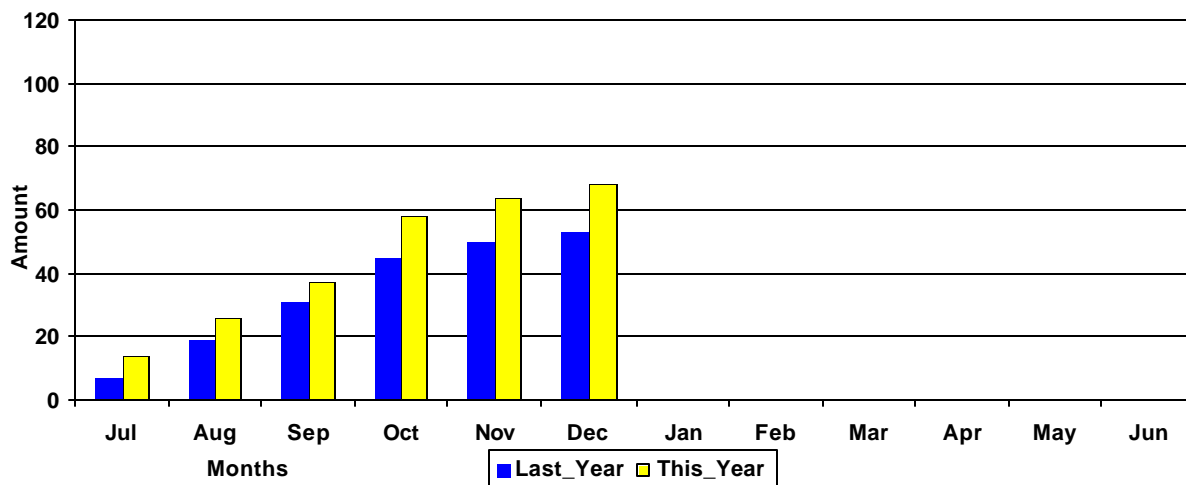
## Year-To-Date -DECEMBER - 2002

	<u>FISCAL YEAR - 2003</u>		<u>FISCAL YEAR - 2002</u>		<u>YTD Change</u>
<b>NSF Awards</b>	49	\$4,659,921	37	\$2,957,274	58%
<b>NIH Awards</b>	92	\$10,866,654	55	\$5,177,134	110%
<b>Dept. Of Defense Awards</b>	35	\$6,894,216	28	\$3,125,275	120%
<b>Dept. Of Education Awards</b>	45	\$6,856,839	52	\$6,642,110	3%
<b>Dept. Of Energy Awards</b>	27	\$2,985,399	26	\$4,800,473	(38)%
<b>State and Municipalities Awards</b>	92	\$2,974,827	111	\$6,000,446	(50)%
<b>Non Profit Awards</b>	94	\$3,127,781	115	\$3,713,727	(16)%
<b>Business and Industry Awards</b>	85	\$1,184,886	95	\$1,345,905	(12)%

Amounts Awarded  
(In millions of dollars)



Cumulative Amounts Awarded  
(In millions of dollars)



# PROPOSALS BY DEPARTMENT

DEPARTMENT	CURRENT MONTH DECEMBER - 2002		YEAR TO DATE FY 2003		YEAR TO DATE FY 2002	
<b>Business, Moore School of</b>						
Business Administration - Division of Research	0	\$0	20	\$234,569	36	\$771,536
Small Business Development Center	1	\$20,000	4	\$1,372,178	4	\$1,311,271
<b>Total :</b>	<b>1</b>	<b>\$20,000</b>	<b>24</b>	<b>\$1,606,747</b>	<b>40</b>	<b>\$2,082,807</b>
<b>Education, College of</b>						
Education Leadership & Policies	1	\$56,661	2	\$187,292	6	\$250,451
Educational Psychology	0	\$0	5	\$162,849	12	\$529,958
Instruction & Teacher Education	7	\$546,092	15	\$1,040,368	7	\$310,843
Physical Education	0	\$0	0	\$0	5	\$57,000
SC Educational Policy Center	0	\$0	0	\$0	2	\$16,500
School Improvement Council Assistance	1	\$12,000	1	\$12,000	1	\$25,250
USC Children's Center	1	\$7,500	2	\$36,500	0	\$0
<b>Total :</b>	<b>10</b>	<b>\$622,253</b>	<b>25</b>	<b>\$1,439,009</b>	<b>33</b>	<b>\$1,190,002</b>
<b>Engineering &amp; Information Technology,</b>						
Chemical Engineering	5	\$227,378	27	\$5,205,930	17	\$1,289,306
Civil & Environmental Engineering	6	\$610,150	16	\$1,766,842	7	\$457,660
Computer Science & Engineering	9	\$1,533,901	29	\$2,905,432	20	\$2,086,624
Electrical Engineering	5	\$2,782,530	16	\$5,297,589	11	\$5,154,630
Engineering & Information Technology, College of	1	\$125,000	3	\$196,004	2	\$161,836
Mechanical Engineering	5	\$340,725	15	\$1,485,777	18	\$4,098,876
SC Alliance for Minority Participation (SCAMP)	0	\$0	1	\$16,000	3	\$1,422,672
<b>Total :</b>	<b>31</b>	<b>\$5,619,684</b>	<b>107</b>	<b>\$16,873,574</b>	<b>78</b>	<b>\$14,671,604</b>
<b>Environment, School of the</b>						
Earth Sciences & Resources Institute	1	\$108,239	4	\$207,205	3	\$1,076,814
Environment, School of the	0	\$0	10	\$739,178	14	\$1,274,784
<b>Total :</b>	<b>1</b>	<b>\$108,239</b>	<b>14</b>	<b>\$946,383</b>	<b>17</b>	<b>\$2,351,598</b>
<b>Families in Society, Institute for</b>						
	1	\$51,843	12	\$2,068,534	12	\$1,229,148
<b>Total :</b>	<b>1</b>	<b>\$51,843</b>	<b>12</b>	<b>\$2,068,534</b>	<b>12</b>	<b>\$1,229,148</b>
<b>Honors College, South Carolina</b>						
	0	\$0	3	\$691,179	1	\$71,982
<b>Total :</b>	<b>0</b>	<b>\$0</b>	<b>3</b>	<b>\$691,179</b>	<b>1</b>	<b>\$71,982</b>
<b>Hospitality, Retail &amp; Sports Management,</b>						
Administrative Information Management	0	\$0	1	\$244,450	0	\$0
Hospitality, Retail & Sports Mgmt - (Dean)	1	\$38,000	1	\$38,000	1	\$25,000
Retailing Studies, Center for	0	\$0	1	\$2,000	0	\$0
<b>Total :</b>	<b>1</b>	<b>\$38,000</b>	<b>3</b>	<b>\$284,450</b>	<b>1</b>	<b>\$25,000</b>
<b>Institutional Planning</b>						
<b>Law Enforcement &amp; Safety</b>						
	0	\$0	0	\$0	1	\$21,600
<b>Total :</b>	<b>0</b>	<b>\$0</b>	<b>0</b>	<b>\$0</b>	<b>1</b>	<b>\$21,600</b>

DEPARTMENT	CURRENT MONTH DECEMBER - 2002		YEAR TO DATE FY 2003		YEAR TO DATE FY 2002	
<b>Law, School of</b>						
Law, School of	0	\$0	5	\$454,206	7	\$1,104,932
<b>Total :</b>	<b>0</b>	<b>\$0</b>	<b>5</b>	<b>\$454,206</b>	<b>7</b>	<b>\$1,104,932</b>
<b>Liberal Arts, College of</b>						
Anthropology	0	\$0	1	\$4,200	1	\$18,525
Archaeology & Anthropology, Institute of	1	\$5,802	5	\$840,326	8	\$940,209
Art	0	\$0	1	\$1,200	0	\$0
English	0	\$0	0	\$0	3	\$56,790
Geography	1	\$14,500	12	\$1,026,545	12	\$560,242
Government & International Studies	0	\$0	6	\$88,990	6	\$139,799
History	0	\$0	7	\$161,977	12	\$180,690
International Studies, Institute of	0	\$0	2	\$217,288	3	\$407,832
Languages, Literatures, and Cultures, Department	0	\$0	0	\$0	1	\$7,533
McKissick Museum	1	\$1,200	3	\$57,278	2	\$6,500
Philosophy	0	\$0	1	\$450,331	0	\$0
Psychology	5	\$964,030	32	\$3,257,309	17	\$1,171,117
Public Service & Policy Research, Institute for	5	\$293,667	9	\$436,385	12	\$2,322,583
Religious Studies	0	\$0	1	\$25,000	1	\$50,000
Sociology	1	\$118,123	3	\$233,207	2	\$76,679
Southern Studies, Institute for	0	\$0	1	\$10,200	1	\$28,968
<b>Total :</b>	<b>14</b>	<b>\$1,397,322</b>	<b>84</b>	<b>\$6,810,236</b>	<b>81</b>	<b>\$5,967,467</b>
<b>Mass Communications &amp; Information</b>						
Journalism & Mass Communications, School of	0	\$0	8	\$464,078	8	\$207,091
Library & Information Sciences, School of	0	\$0	3	\$18,597	0	\$0
<b>Total :</b>	<b>0</b>	<b>\$0</b>	<b>11</b>	<b>\$482,675</b>	<b>8</b>	<b>\$207,091</b>
<b>Medicine, School of</b>						
Biochemistry *	0	\$0	0	\$0	1	\$316,495
Cancer Center, South Carolina	1	\$29,000	6	\$99,382	3	\$105,968
Cell & Developmental Biology & Anatomy	1	\$361,250	6	\$1,275,465	7	\$1,177,958
Cell Biology & Neurosciences	0	\$0	0	\$0	1	\$108,000
Family & Preventive Medicine	2	\$489,056	6	\$780,327	5	\$466,856
Internal Medicine	0	\$0	6	\$860,662	11	\$414,541
Medicine, School of - (Dean)	0	\$0	0	\$0	1	\$27,493
Medicine, School of - (Graduate Program)	0	\$0	0	\$0	1	\$17,680
Neuropsychiatry	0	\$0	2	\$92,822	9	\$914,135
Obstetrics & Gynecology	0	\$0	1	\$71,165	1	\$59,000
Ophthalmology	1	\$30,200	1	\$30,200	1	\$35,000
Pathology	0	\$0	0	\$0	8	\$906,678
Pathology & Microbiology	0	\$0	9	\$928,243	4	\$842,198
Pediatrics/Developmental Disabilities, Center for	2	\$135,000	9	\$996,222	13	\$2,071,080
Pharmacology, Physiology & Neuroscience	0	\$0	14	\$2,791,676	9	\$700,427
Research & Special Projects	2	\$195,516	5	\$300,166	3	\$10,358
Surgery	0	\$0	3	\$130,565	4	\$265,323
<b>Total :</b>	<b>9</b>	<b>\$1,240,022</b>	<b>68</b>	<b>\$8,356,895</b>	<b>82</b>	<b>\$8,439,190</b>
<b>Music, School of</b>	0	\$0	0	\$0	1	\$139,603
<b>Total :</b>	<b>0</b>	<b>\$0</b>	<b>0</b>	<b>\$0</b>	<b>1</b>	<b>\$139,603</b>

DEPARTMENT	CURRENT MONTH DECEMBER - 2002		YEAR TO DATE FY 2003		YEAR TO DATE FY 2002	
<b>Nursing, College of</b>						
Academic & Student Affairs	1	\$278,521	3	\$597,991	3	\$2,094,641
Administrative & Clinical Nursing	0	\$0	3	\$851,210	2	\$526,790
Family & Community Health Nursing	1	\$29,192	3	\$945,427	5	\$533,876
<b>Total :</b>	<b>2</b>	<b>\$307,713</b>	<b>9</b>	<b>\$2,394,628</b>	<b>10</b>	<b>\$3,155,307</b>
<b>Pharmacy, College of</b>						
Basic Pharmaceutical Sciences	0	\$0	10	\$819,189	7	\$1,250,860
Pharmacy & Health Outcomes Sci.	0	\$0	0	\$0	1	\$30,000
Pharmacy Practice	0	\$0	0	\$0	3	\$136,085
<b>Total :</b>	<b>0</b>	<b>\$0</b>	<b>10</b>	<b>\$819,189</b>	<b>11</b>	<b>\$1,416,945</b>
<b>Provost, Office of the</b>						
TRIO Programs	1	\$486,701	3	\$1,078,453	0	\$0
<b>Total :</b>	<b>1</b>	<b>\$486,701</b>	<b>3</b>	<b>\$1,078,453</b>	<b>0</b>	<b>\$0</b>
<b>Public Health, Norman J. Arnold School of</b>						
Communication Sciences & Disorders	0	\$0	3	\$83,891	1	\$7,917
Environmental Health Sciences	0	\$0	11	\$1,775,558	11	\$1,047,794
Epidemiology & Biostatistics	4	\$134,699	17	\$664,487	15	\$1,156,807
Exercise Science	2	\$860,970	10	\$2,011,591	11	\$612,047
Health Administration	5	\$21,500	21	\$629,536	11	\$194,378
Health Promotion, Education & Behavior	1	\$29,264	33	\$2,449,689	20	\$329,527
Health Services & Policy Research, Center for	0	\$0	2	\$104,094	4	\$383,449
Prevention Research Center	0	\$0	9	\$706,957	6	\$978,674
Public Health, Norman J. Arnold School of - (Dean)	2	\$110,000	6	\$2,293,699	0	\$0
<b>Total :</b>	<b>14</b>	<b>\$1,156,433</b>	<b>112</b>	<b>\$10,719,502</b>	<b>79</b>	<b>\$4,710,593</b>
<b>Regional and Four-Year Campuses</b>						
USC Aiken	3	\$172,506	17	\$3,310,708	16	\$1,407,089
USC Beaufort	1	\$61,707	11	\$3,074,383	7	\$172,551
USC Lancaster	2	\$552,065	6	\$1,112,499	3	\$317,360
USC Salkehatchie	1	\$47,800	8	\$107,946	2	\$291,293
USC Spartanburg	3	\$540,643	14	\$3,560,356	23	\$1,241,551
USC Sumter	0	\$0	0	\$0	2	\$192,079
USC Union	1	\$273,333	2	\$496,281	0	\$0
<b>Total :</b>	<b>11</b>	<b>\$1,648,054</b>	<b>58</b>	<b>\$11,662,173</b>	<b>53</b>	<b>\$3,621,923</b>
<b>Research, Vice President for</b>						
Biomedical Research Infrastructure Network (BRIN)	0	\$0	1	\$2,000,000	0	\$0
NanoCenter	0	\$0	6	\$3,815,978	16	\$5,671,235
Sponsored Programs & Research	0	\$0	0	\$0	1	\$60,000
Technology Incubator	0	\$0	1	\$160,000	0	\$0
<b>Total :</b>	<b>0</b>	<b>\$0</b>	<b>8</b>	<b>\$5,975,978</b>	<b>17</b>	<b>\$5,731,235</b>
<b>Science and Mathematics, College of</b>						
Baruch Institute	2	\$95,651	12	\$1,192,994	13	\$938,862
Biological Sciences	5	\$912,651	33	\$4,968,038	33	\$3,067,783
Chemistry & Biochemistry	4	\$192,839	35	\$5,048,181	27	\$5,488,171
Geological Sciences	9	\$1,148,131	33	\$3,696,513	24	\$2,127,684

DEPARTMENT	CURRENT MONTH DECEMBER - 2002		YEAR TO DATE FY 2003		YEAR TO DATE FY 2002	
Mathematics	2	\$134,163	17	\$1,052,794	11	\$434,851
Physics & Astronomy	2	\$468,530	21	\$2,900,304	13	\$1,754,346
Science & Math Administration	0	\$0	3	\$661,120	2	\$2,190,461
Science Education, Center for	0	\$0	2	\$34,845	4	\$325,041
Statistics	0	\$0	16	\$829,481	10	\$238,481
<b>Total :</b>	<b>24</b>	<b>\$2,951,965</b>	<b>172</b>	<b>\$20,384,270</b>	<b>137</b>	<b>\$16,565,680</b>
<b>Social Work, College of</b>	2	\$5,280	38	\$1,115,095	37	\$872,505
<b>Total :</b>	<b>2</b>	<b>\$5,280</b>	<b>38</b>	<b>\$1,115,095</b>	<b>37</b>	<b>\$872,505</b>
<b>Student Affairs, Division of</b>						
Housing & Residential Services	0	\$0	0	\$0	1	\$25,000
Student Health	0	\$0	2	\$31,788	1	\$13,531
Student Life	0	\$0	1	\$4,271	2	\$27,515
<b>Total :</b>	<b>0</b>	<b>\$0</b>	<b>3</b>	<b>\$36,059</b>	<b>4</b>	<b>\$66,046</b>
<b>University 101</b>	0	\$0	1	\$23,925	0	\$0
<b>Total :</b>	<b>0</b>	<b>\$0</b>	<b>1</b>	<b>\$23,925</b>	<b>0</b>	<b>\$0</b>
<b>University Libraries</b>						
Thomas Cooper Library	0	\$0	1	\$4,643	1	\$90,000
<b>Total :</b>	<b>0</b>	<b>\$0</b>	<b>1</b>	<b>\$4,643</b>	<b>1</b>	<b>\$90,000</b>
<b>Report TOTAL :</b>	<b>122</b>	<b>\$15,653,509</b>	<b>771</b>	<b>\$94,227,803</b>	<b>710</b>	<b>\$73,415,762</b>

\* - Biochemistry represents faculty with a dual appointment to the Department of Chemistry and the School of Medicine. The figures are included in both division totals but only once in the overall total.