



MEMORANDUM

To: William C. Harris, Ph.D.
Director

From: Anthony M. Boccanfuso, Ph.D.
Managing Director

RE: Report of Sponsored Program Activity for December 2002

Date: January 17, 2002

The University received awards totaling \$3.3 million during the month, a 43.1% decrease from last December (\$5.8 million). **Thus far in the fiscal year, award dollars are 14.8% behind last year, \$53.4 million vs. \$62.7 million.**

Faculty submitted 106 proposals requesting \$13.7 million during December. SPAR has processed 719 proposals requesting \$76.2 million during the first six months of FY02. This compares to last year's totals of 734 and \$83.1 million.

	December FY02	YTD FY01	YTD FY02	YTD Change
Award Dollars	\$3,318,292	\$62,665,279	\$53,418,356	(-14.8%)
Proposals Submitted	106	734	719	(-2%)
Proposal Dollars Requested	\$13,685,247	\$83,075,143	\$76,207,241	(-8.2%)

cc: K. McCoy
R. Steven Etheredge
J. Odom

Sponsored Programs and Research Monthly Report

SUMMARY OF AWARDS DECEMBER - 2001

By Purpose

Research Awards - SPAR	\$1,493,126
Research Awards - USCR	\$259,221
Training Awards	\$291,412
Service Awards	\$825,544
Equipment Awards	\$287,865
Graduate Assistantship Awards	\$161,124
TOTAL:	\$3,318,292

By Source

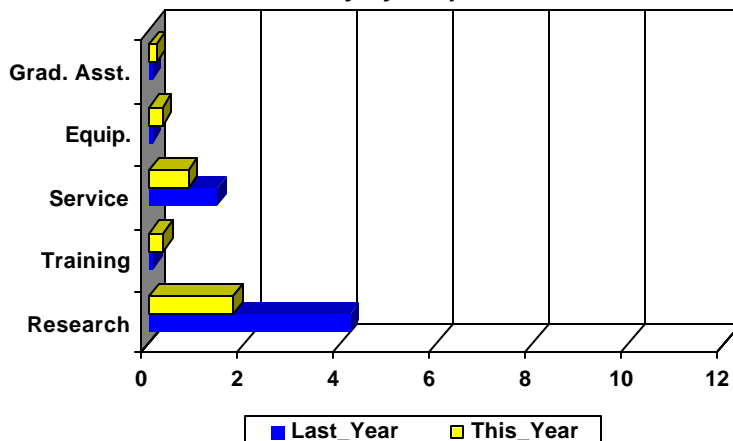
Federal Awards - SPAR	\$1,355,837
Federal Awards - USCR	\$381,090
Private Awards - SPAR	\$707,049
Private Awards - USCR	\$310,974
State Awards	\$563,342
TOTAL:	\$3,318,292

COMPARISON OF AMOUNT RECEIVED

DECEMBER - 2001 vs. DECEMBER - 2000

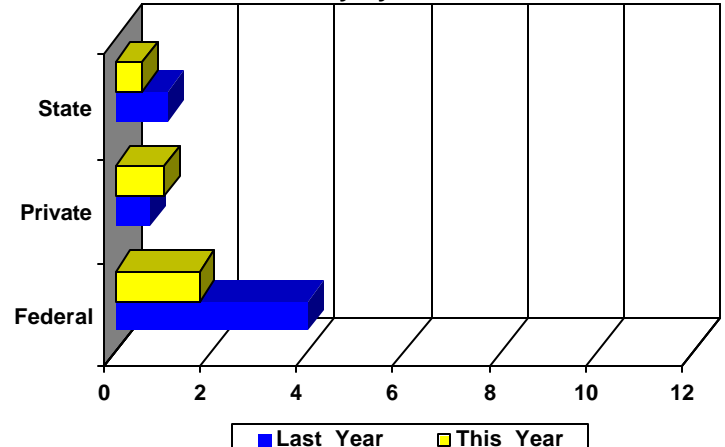
Amounts Received
(In millions of dollars)

Summary by Purpose



Amounts Received
(In millions of dollars)

Summary by Source



AWARDS BY DEPARTMENT

DEPARTMENT	CURRENT MONTH DECEMBER - 2001		YEAR TO DATE FY 2002		YEAR TO DATE FY 2001	
Business and Finance						
Campus Services	0	\$0	0	\$0	2	\$12,000
Recycling & Waste Management	0	\$0	1	\$9,970	0	\$0
Total :	0	\$0	1	\$9,970	2	\$12,000
College of Criminal Justice						
	0	\$0	1	\$32,596	8	\$334,428
Total :	0	\$0	1	\$32,596	8	\$334,428
College of Education						
Education	0	\$0	1	\$27,500	0	\$0
Education Leadership & Policies	0	\$0	5	\$211,929	13	\$567,353
Educational Psychology	3	\$32,397	10	\$406,707	5	\$473,164
Instruction & Teacher Education	4	\$189,556	13	\$1,852,541	6	\$1,176,077
Office of Research	0	\$0	0	\$0	1	\$14,295
Physical Education	4	\$37,000	5	\$57,000	1	\$122,200
SC Educational Policy Center	0	\$0	1	\$15,500	4	\$320,106
School Improvement Council Assistance	0	\$0	2	\$11,000	0	\$0
Total :	11	\$258,953	37	\$2,582,177	30	\$2,673,195
College of Engineering & Information						
Chemical Engineering	2	\$350,320	21	\$2,304,823	21	\$1,400,631
Civil & Environmental Engineering	1	\$30,100	9	\$927,381	6	\$1,141,743
Computer Science & Engineering	0	\$0	7	\$81,708	10	\$184,341
Electrical Engineering	0	\$0	7	\$2,274,441	9	\$4,781,679
Engineering & Information Technology, College of	1	\$125,000	3	\$1,652,495	2	\$173,862
Mechanical Engineering	1	\$19,710	13	\$766,538	18	\$1,509,371
SCAMP	0	\$0	6	\$442,672	4	\$902,200
Total :	5	\$525,130	66	\$8,450,058	70	\$10,093,827
College of Hospitality, Retail & Sports						
Center For Retailing Studies	0	\$0	1	\$11,429	0	\$0
Hospitality, Retail & Sports Mgmt - Dean's Office	0	\$0	1	\$62,500	2	\$120,000
Sport Administration	0	\$0	0	\$0	1	\$13,000
Total :	0	\$0	2	\$73,929	3	\$133,000
College of Journalism & Mass						
	0	\$0	7	\$167,495	14	\$312,601
Total :	0	\$0	7	\$167,495	14	\$312,601
College of Liberal Arts						
Archaeology & Anthropology, Institute of	0	\$0	7	\$645,349	6	\$441,095
Art	0	\$0	0	\$0	1	\$2,500
English	0	\$0	2	\$45,000	1	\$750
Geography	1	\$25,430	12	\$612,014	11	\$618,204
Government & International Studies	0	\$0	4	\$49,298	10	\$65,678
History	4	\$7,010	16	\$48,306	20	\$127,099
Institute for Southern Studies	0	\$0	1	\$27,778	2	\$100,000
International Studies, Institute of	0	\$0	0	\$0	2	\$128,997
Liberal Arts Dean's Office	0	\$0	1	\$6,000	0	\$0

DEPARTMENT	CURRENT MONTH DECEMBER - 2001		YEAR TO DATE FY 2002		YEAR TO DATE FY 2001	
McKissick Museum	0	\$0	3	\$7,750	3	\$67,859
Naval Science	0	\$0	2	\$4,000	3	\$5,600
Philosophy	0	\$0	2	\$14,894	2	\$36,900
Psychology	0	\$0	14	\$367,045	31	\$1,483,552
Public Service & Policy Research, Institute for	0	\$0	12	\$544,772	20	\$650,985
Religious Studies	0	\$0	1	\$50,000	0	\$0
Sociology	1	\$6,018	1	\$6,018	2	\$168,976
Trio Programs	0	\$0	6	\$1,226,137	5	\$1,106,498
Total :	6	\$38,458	84	\$3,654,361	119	\$5,004,693
College of Library & Information Science	1	\$8,380	4	\$53,565	5	\$48,642
Total :	1	\$8,380	4	\$53,565	5	\$48,642
College of Nursing						
Academic & Student Affairs	1	\$90,384	12	\$852,275	8	\$755,598
Administrative & Clinical Nursing	0	\$0	1	\$86,003	2	\$92,144
Family & Community Health Nursing	0	\$0	1	\$7,725	5	\$241,841
Total :	1	\$90,384	14	\$946,003	15	\$1,089,583
College of Pharmacy						
Basic Pharmaceutical Sciences	0	\$0	3	\$132,224	4	\$147,843
Clinical Pharmacy	1	\$91,250	3	\$136,085	5	\$125,000
Palmetto Poison Center	0	\$0	2	\$285,881	2	\$80,000
Pharmacy Practice	0	\$0	2	\$40,243	8	\$169,397
Total :	1	\$91,250	10	\$594,433	19	\$522,240
College of Science and Math						
Baruch Institute	1	\$35,143	13	\$1,385,490	15	\$1,245,557
Biological Research & Technology, Institute for	1	\$1,100	2	\$3,300	0	\$0
Biological Sciences	2	\$225,296	20	\$2,131,171	20	\$1,554,274
Center For Science Education	0	\$0	1	\$12,400	2	\$35,279
Chemistry & Biochemistry	1	\$2,834	25	\$2,035,892	38	\$2,680,372
Computer Science (moved to Engineering)	0	\$0	0	\$0	1	\$19,266
EPSCoR (moved to VP for Research)	0	\$0	0	\$0	5	\$211,885
Geological Sciences	6	\$412,547	33	\$1,646,765	21	\$973,374
Mathematics	1	\$107,060	2	\$155,787	7	\$472,247
Physics & Astronomy	1	\$250,000	4	\$447,070	15	\$736,053
Science & Math Administration	0	\$0	6	\$743,043	6	\$904,500
Statistics	0	\$0	7	\$235,991	10	\$355,554
Total :	13	\$1,033,980	113	\$8,796,909	140	\$9,188,361
College of Social Work	4	\$254,508	40	\$1,680,102	42	\$2,241,237
Total :	4	\$254,508	40	\$1,680,102	42	\$2,241,237
Darla Moore School of Business						
Business Administration - Division Of Research	0	\$0	40	\$796,906	37	\$1,032,801
Small Business Development Center	0	\$0	3	\$187,500	7	\$948,571
Total :	0	\$0	43	\$984,406	44	\$1,981,372
Division of Student Affairs						

DEPARTMENT	CURRENT MONTH DECEMBER - 2001		YEAR TO DATE FY 2002		YEAR TO DATE FY 2001	
International Programs for Students	0	\$0	0	\$0	1	\$3,000
Student Health	2	\$83,122	2	\$83,122	0	\$0
Student Life	0	\$0	3	\$153,952	2	\$211,571
Total :	2	\$83,122	5	\$237,074	3	\$214,571
Enrollment Management	0	\$0	1	\$33,047	0	\$0
Total :	0	\$0	1	\$33,047	0	\$0
Institute for Families in Society						
Families in Society, Institute for	0	\$0	10	\$1,503,060	15	\$1,951,428
Total :	0	\$0	10	\$1,503,060	15	\$1,951,428
Institutional Planning						
Law School						
Law School	2	\$128,019	7	\$569,764	9	\$1,107,758
Total :	2	\$128,019	7	\$569,764	9	\$1,107,758
Norman J. Arnold School of Public Health						
Center for Health Services & Policy Research	0	\$0	4	\$201,300	0	\$0
Communication Sciences & Disorders	0	\$0	1	\$7,917	0	\$0
Environmental Health Sciences	1	\$52,881	40	\$1,546,773	19	\$1,142,691
Epidemiology & Biostatistics	0	\$0	22	\$3,169,774	20	\$2,544,890
Exercise Science	0	\$0	8	\$771,072	11	\$1,760,386
Health Administration	3	\$19,200	13	\$616,027	22	\$613,174
Health Promotion & Education	5	\$71,325	24	\$424,408	24	\$894,798
Norman J. Arnold School of Public Health - Dean	0	\$0	3	\$2,626,630	2	\$492,197
Prevention Research Center	1	\$51,797	17	\$2,797,191	19	\$2,373,258
Total :	10	\$195,203	132	\$12,161,092	117	\$9,821,394
Regional and Four-Year Campuses						
Regional Campuses & Continuing Education	0	\$0	0	\$0	1	\$32,100
USC Aiken	1	\$9,000	16	\$875,792	16	\$1,037,643
USC Beaufort	0	\$0	7	\$204,069	7	\$420,884
USC Lancaster	0	\$0	3	\$240,832	6	\$456,882
USC Salkehatchie	2	\$291,293	4	\$512,747	3	\$426,764
USC Spartanburg	2	\$1,987	41	\$1,225,889	30	\$1,248,892
USC Sumter	0	\$0	4	\$250,208	6	\$402,896
USC Union	0	\$0	1	\$224,471	1	\$198,582
Total :	5	\$302,280	76	\$3,534,008	70	\$4,224,643
School of Medicine						
Basic Science Research	0	\$0	1	\$209,244	0	\$0
Biochemistry *	1	\$2,834	14	\$1,422,592	16	\$1,145,223
Cell Biology & Neurosciences	0	\$0	5	\$375,368	4	\$455,234
Developmental Biology & Anatomy	0	\$0	5	\$399,566	3	\$432,672
Family & Preventive Medicine	0	\$0	6	\$532,273	5	\$849,326
Health & Safety	0	\$0	1	\$9,600	1	\$10,000
Internal Medicine	5	\$35,254	26	\$879,096	24	\$384,782
Medicine Library	0	\$0	2	\$137,048	0	\$0
Microbiology & Immunology	0	\$0	4	\$511,016	5	\$682,421

DEPARTMENT	CURRENT MONTH DECEMBER - 2001		YEAR TO DATE FY 2002		YEAR TO DATE FY 2001	
Neuropsychiatry	1	\$18,000	6	\$113,477	5	\$268,390
Obstetrics & Gynecology	0	\$0	0	\$0	2	\$70,525
Orthopaedic Surgery	0	\$0	0	\$0	2	\$7,250
Pathology	0	\$0	2	\$179,947	1	\$7,500
Pediatrics/Center for Developmental Disabilities	1	\$164,817	9	\$1,483,274	22	\$2,703,174
Pharmacology & Physiology	0	\$0	1	\$71,500	4	\$120,063
Radiology	0	\$0	1	\$401,974	1	\$400,313
Research & Special Projects	1	\$41,412	9	\$334,448	2	\$124,800
School of Medicine Graduate Program	0	\$0	0	\$0	2	\$35,360
South Carolina Cancer Center	1	\$21,968	5	\$135,968	2	\$11,711
Surgery	2	\$17,174	9	\$184,478	0	\$0
Total :	12	\$301,459	106	\$7,380,869	101	\$7,708,744
School of the Environment						
Earth Sciences & Resources Institute	0	\$0	3	\$226,274	3	\$204,998
School of the Environment	0	\$0	6	\$223,030	2	\$3,964
Total :	0	\$0	9	\$449,304	5	\$208,962
South Carolina Honors College						
	0	\$0	1	\$102,676	0	\$0
Total :	0	\$0	1	\$102,676	0	\$0
University Libraries						
Thomas Cooper Library	1	\$10,000	2	\$11,020	1	\$213,337
Total :	1	\$10,000	2	\$11,020	1	\$213,337
Vice President for Research						
EPSCoR	0	\$0	0	\$0	41	\$2,404,486
NanoCenter	0	\$0	3	\$377,999	0	\$0
Sponsored Programs & Research	0	\$0	1	\$23,689	1	\$20,000
Vice President for Research	0	\$0	0	\$0	1	\$2,300,000
Vice President for Research - General	0	\$0	3	\$431,342	0	\$0
Total :	0	\$0	7	\$833,030	43	\$4,724,486
Report TOTAL :	73	\$3,318,292	764	\$53,418,356	859	\$62,665,279

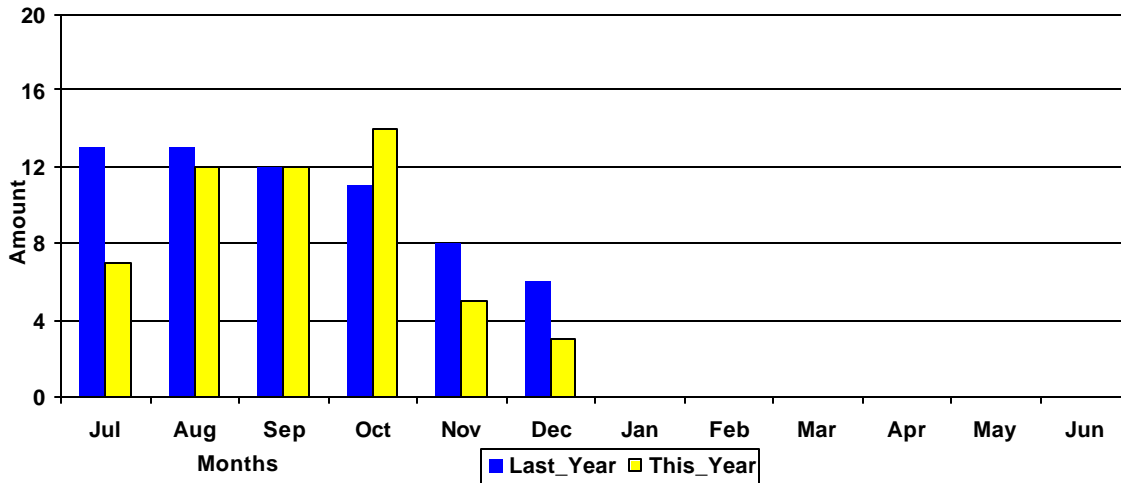
* - Biochemistry represents faculty with a dual appointment to the Department of Chemistry and the School of Medicine. The figures are included in both division totals but only once in the overall total.

Funding Agency Comparison Report

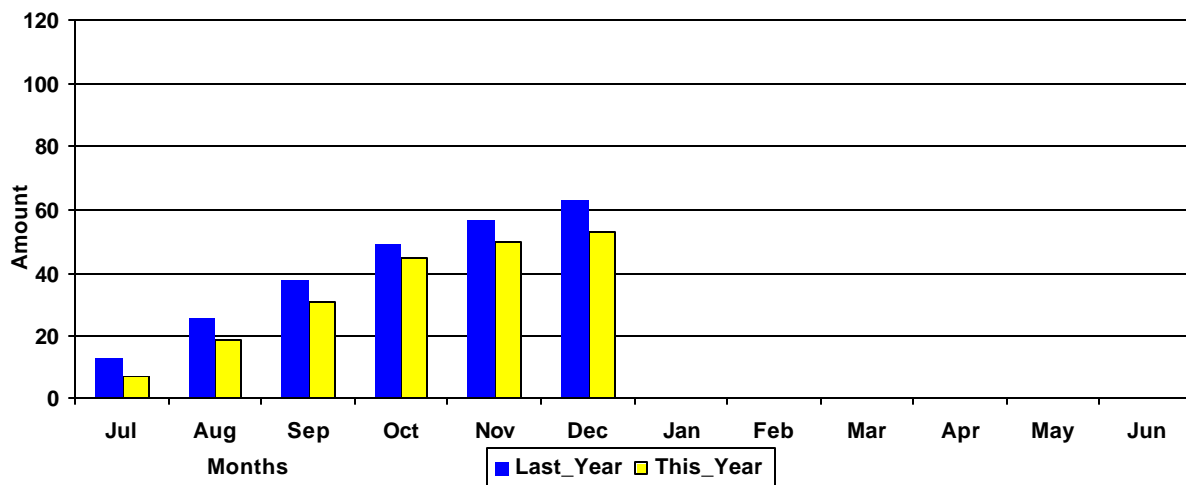
Year-To-Date -DECEMBER - 2001

		<u>FISCAL YEAR - 2002</u>		<u>FISCAL YEAR - 2001</u>	
NSF Awards	37	\$2,956,718	48	\$3,254,725	
NIH Awards	58	\$5,488,573	68	\$7,279,925	
Dept. Of Defense Awards	27	\$3,041,883	38	\$7,184,716	
Dept. Of Education Awards	52	\$6,657,457	47	\$7,692,088	
Dept. Of Energy Awards	20	\$4,138,618	25	\$2,354,088	
SCUREF Awards from DOE	6	\$751,857	7	\$564,055	
State and Municipalities Awards	112	\$6,013,941	169	\$10,238,816	

Amounts Awarded
(In millions of dollars)



Cumulative Amounts Awarded
(In millions of dollars)



PROPOSALS BY DEPARTMENT

DEPARTMENT	CURRENT MONTH DECEMBER - 2001		YEAR TO DATE FY 2002		YEAR TO DATE FY 2001	
Business and Finance						
Campus Services	0	\$0	0	\$0	1	\$2,000
Total :	0	\$0	0	\$0	1	\$2,000
College of Criminal Justice						
	0	\$0	1	\$33,917	5	\$196,223
Total :	0	\$0	1	\$33,917	5	\$196,223
College of Education						
Education Leadership & Policies	1	\$20,371	6	\$250,451	9	\$155,789
Educational Psychology	1	\$200,000	12	\$529,958	8	\$701,264
Instruction & Teacher Education	4	\$215,100	7	\$310,843	12	\$2,964,802
Physical Education	4	\$37,000	5	\$57,000	2	\$142,200
SC Educational Policy Center	0	\$0	2	\$16,500	2	\$92,816
School Improvement Council Assistance	0	\$0	1	\$25,250	0	\$0
USC Children's Center	0	\$0	0	\$0	1	\$30,000
Total :	10	\$472,471	33	\$1,190,002	34	\$4,086,871
College of Engineering & Information						
Chemical Engineering	2	\$53,453	17	\$1,289,306	23	\$5,011,838
Civil & Environmental Engineering	0	\$0	7	\$457,660	10	\$717,515
Computer Science & Engineering	3	\$556,091	20	\$2,058,141	17	\$1,308,689
Electrical Engineering	3	\$116,892	11	\$7,004,601	7	\$6,117,993
Engineering & Information Technology, College of	1	\$125,000	2	\$161,836	2	\$225,000
Mechanical Engineering	5	\$3,549,766	18	\$4,098,876	25	\$2,902,157
SCAMP	0	\$0	3	\$1,422,672	2	\$812,000
Total :	14	\$4,401,202	78	\$16,493,092	86	\$17,095,192
College of Hospitality, Retail & Sports						
Hospitality, Retail & Sports Mgmt - Dean's Office	1	\$25,000	1	\$25,000	0	\$0
Sport Administration	0	\$0	0	\$0	1	\$13,000
Total :	1	\$25,000	1	\$25,000	1	\$13,000
College of Journalism & Mass						
	0	\$0	8	\$207,091	15	\$442,722
Total :	0	\$0	8	\$207,091	15	\$442,722
College of Liberal Arts						
Anthropology	0	\$0	1	\$18,525	1	\$72,250
Archaeology & Anthropology, Institute of	0	\$0	8	\$940,209	6	\$1,096,273
Art	0	\$0	0	\$0	1	\$2,500
English	2	\$44,790	3	\$56,790	3	\$19,750
French & Classics	0	\$0	1	\$7,533	0	\$0
Geography	2	\$17,456	12	\$560,242	6	\$338,713
Government & International Studies	0	\$0	6	\$139,799	6	\$92,051
History	2	\$4,511	12	\$180,690	14	\$211,442
Institute for Southern Studies	0	\$0	1	\$28,968	0	\$0
International Studies, Institute of	1	\$224,389	3	\$407,832	0	\$0
Linguistics Program	0	\$0	0	\$0	1	\$30,246
McKissick Museum	0	\$0	2	\$6,500	3	\$112,255

DEPARTMENT	CURRENT MONTH DECEMBER - 2001		YEAR TO DATE FY 2002		YEAR TO DATE FY 2001	
Psychology	1	\$72,250	17	\$1,171,117	28	\$7,614,036
Public Service & Policy Research, Institute for	0	\$0	12	\$2,322,583	21	\$1,015,704
Religious Studies	0	\$0	1	\$50,000	0	\$0
Sociology	1	\$6,018	2	\$76,679	7	\$242,003
Spanish, Italian, & Portuguese	0	\$0	0	\$0	1	\$49,941
Trio Programs	0	\$0	4	\$757,790	2	\$367,697
Total :	9	\$369,414	85	\$6,725,257	100	\$11,264,861
College of Library & Information Science	1	\$8,380	4	\$61,219	4	\$57,741
Total :	1	\$8,380	4	\$61,219	4	\$57,741
College of Nursing						
Academic & Student Affairs	0	\$0	3	\$2,094,641	5	\$183,743
Administrative & Clinical Nursing	0	\$0	2	\$526,790	3	\$18,500
Family & Community Health Nursing	0	\$0	5	\$533,876	2	\$2,418,860
Total :	0	\$0	10	\$3,155,307	10	\$2,621,103
College of Pharmacy						
Basic Pharmaceutical Sciences	1	\$82,500	7	\$1,250,860	11	\$1,149,911
Clinical Pharmacy	0	\$0	3	\$136,085	3	\$120,728
Palmetto Poison Center	0	\$0	0	\$0	2	\$133,957
Pharmacy Practice	0	\$0	1	\$30,000	9	\$341,440
Total :	1	\$82,500	11	\$1,416,945	25	\$1,746,036
College of Science and Math						
Baruch Institute	3	\$245,535	13	\$938,862	9	\$732,376
Biological Sciences	4	\$370,560	33	\$3,067,783	33	\$2,673,430
Center For Science Education	0	\$0	4	\$325,041	3	\$130,986
Chemistry & Biochemistry	7	\$1,749,675	28	\$5,632,839	43	\$7,134,062
EPSCoR (moved to VP for Research)	0	\$0	0	\$0	1	\$40,000
Geological Sciences	1	\$105,416	24	\$2,127,684	24	\$2,042,710
Mathematics	0	\$0	11	\$434,851	9	\$531,441
Physics & Astronomy	1	\$230,000	13	\$1,792,300	18	\$6,259,562
Science & Math Administration	1	\$212,728	2	\$2,190,461	7	\$1,374,443
Statistics	1	\$20,060	10	\$238,481	7	\$211,406
Total :	18	\$2,933,974	138	\$16,748,302	154	\$21,130,416
College of Social Work	6	\$260,106	37	\$872,505	38	\$1,393,321
Total :	6	\$260,106	37	\$872,505	38	\$1,393,321
Darla Moore School of Business						
Business Administration - Division Of Research	1	\$2,008	36	\$771,536	32	\$523,476
Small Business Development Center	0	\$0	4	\$1,311,271	3	\$2,386,650
Total :	1	\$2,008	40	\$2,082,807	35	\$2,910,126
Division of Student Affairs						
Housing & Residential Services	0	\$0	1	\$25,000	0	\$0
Student Health	0	\$0	1	\$13,531	0	\$0
Student Life	0	\$0	2	\$27,515	1	\$19,410
Total :	0	\$0	4	\$66,046	1	\$19,410

DEPARTMENT	CURRENT MONTH DECEMBER - 2001		YEAR TO DATE FY 2002		YEAR TO DATE FY 2001	
Institute for Families in Society						
Families in Society, Institute for	2	\$188,427	12	\$1,229,148	8	\$1,158,000
Total :	2	\$188,427	12	\$1,229,148	8	\$1,158,000
Institutional Planning						
Law Enforcement & Safety	0	\$0	1	\$21,600	1	\$19,559
Total :	0	\$0	1	\$21,600	1	\$19,559
Law School						
Law School	0	\$0	7	\$1,104,932	10	\$1,162,499
Total :	0	\$0	7	\$1,104,932	10	\$1,162,499
Norman J. Arnold School of Public Health						
Center for Health Services & Policy Research	0	\$0	4	\$383,449	0	\$0
Communication Sciences & Disorders	0	\$0	1	\$7,917	1	\$199,011
Environmental Health Sciences	1	\$38,630	12	\$1,165,535	9	\$557,863
Epidemiology & Biostatistics	2	\$139,856	15	\$1,156,807	17	\$2,335,630
Exercise Science	0	\$0	10	\$573,417	6	\$139,321
Health Administration	2	\$17,500	11	\$194,378	20	\$125,478
Health Promotion & Education	4	\$18,325	20	\$329,527	19	\$529,683
Norman J. Arnold School of Public Health - Dean	0	\$0	0	\$0	2	\$1,338,100
Prevention Research Center	3	\$613,147	6	\$978,674	7	\$833,453
Total :	12	\$827,458	79	\$4,789,704	81	\$6,058,539
Regional and Four-Year Campuses						
USC Aiken	4	\$706,059	16	\$1,407,089	13	\$593,869
USC Beaufort	1	\$10,000	7	\$172,551	10	\$536,197
USC Lancaster	0	\$0	3	\$317,360	3	\$370,165
USC Salkehatchie	2	\$291,293	2	\$291,293	3	\$377,922
USC Spartanburg	3	\$146,690	23	\$1,241,551	13	\$807,725
USC Sumter	0	\$0	2	\$192,079	5	\$312,556
USC Union	0	\$0	0	\$0	1	\$299,376
Total :	10	\$1,154,042	53	\$3,621,923	48	\$3,297,810
School of Medicine						
Animal Resources Facility	0	\$0	0	\$0	1	\$128,159
Biochemistry *	2	\$648,757	7	\$1,309,072	4	\$942,790
Cell Biology & Neurosciences	0	\$0	1	\$108,000	3	\$398,502
Developmental Biology & Anatomy	1	\$82,500	7	\$1,177,958	16	\$2,068,775
Family & Preventive Medicine	1	\$15,000	5	\$466,856	5	\$582,695
Internal Medicine	1	\$25,000	11	\$414,541	4	\$699,514
Microbiology & Immunology	1	\$407,479	4	\$842,198	3	\$548,975
Neuropsychiatry	1	\$38,570	9	\$914,135	1	\$94,160
Obstetrics & Gynecology	1	\$59,000	1	\$59,000	1	\$59,000
Ophthalmology	0	\$0	1	\$35,000	0	\$0
Pathology	0	\$0	8	\$906,678	6	\$931,589
Pediatrics/Center for Developmental Disabilities	1	\$99,790	13	\$2,071,080	9	\$519,596
Pharmacology & Physiology	1	\$15,000	9	\$700,427	10	\$640,346
Radiology	0	\$0	0	\$0	1	\$400,313

DEPARTMENT	CURRENT MONTH DECEMBER - 2001		YEAR TO DATE FY 2002		YEAR TO DATE FY 2001	
Research & Special Projects	1	\$1,000	3	\$10,358	0	\$0
School of Medicine - Dean's Office	0	\$0	1	\$27,493	0	\$0
School of Medicine Graduate Program	1	\$17,680	1	\$17,680	2	\$17,680
South Carolina Cancer Center	1	\$21,968	3	\$105,968	2	\$11,711
Surgery	0	\$0	4	\$265,323	0	\$0
Total :	13	\$1,431,744	88	\$9,431,767	68	\$8,043,805
School of Music	1	\$139,603	1	\$139,603	0	\$0
Total :	1	\$139,603	1	\$139,603	0	\$0
School of the Environment						
Earth Sciences & Resources Institute	0	\$0	3	\$1,076,814	2	\$898,187
School of the Environment	1	\$37,263	14	\$1,274,784	5	\$122,870
Total :	1	\$37,263	17	\$2,351,598	7	\$1,021,057
South Carolina Honors College	0	\$0	1	\$71,982	2	\$85,414
Total :	0	\$0	1	\$71,982	2	\$85,414
University Libraries						
Libraries & Collections	0	\$0	0	\$0	1	\$5,350
Thomas Cooper Library	0	\$0	1	\$90,000	1	\$166,878
Total :	0	\$0	1	\$90,000	2	\$172,228
University Press	0	\$0	0	\$0	1	\$10,000
Total :	0	\$0	0	\$0	1	\$10,000
Vice President for Research						
EPSCoR	0	\$0	0	\$0	1	\$10,000
NanoCenter	8	\$2,000,414	15	\$5,526,567	0	\$0
Sponsored Programs & Research	0	\$0	1	\$60,000	0	\$0
Total :	8	\$2,000,414	16	\$5,586,567	1	\$10,000
Report TOTAL :	106	\$13,685,247	719	\$76,207,241	734	\$83,075,143

* - Biochemistry represents faculty with a dual appointment to the Department of Chemistry and the School of Medicine. The figures are included in both division totals but only once in the overall total.