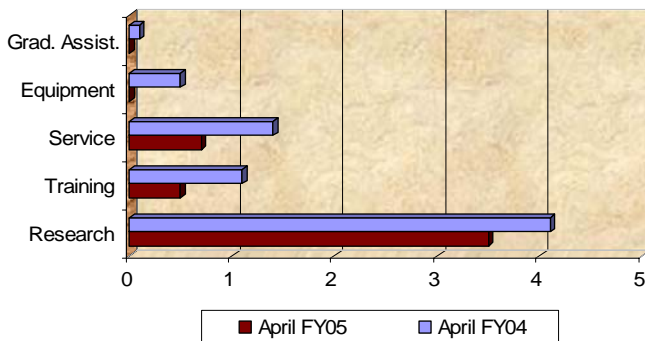


# Sponsored Awards Management (SAM)

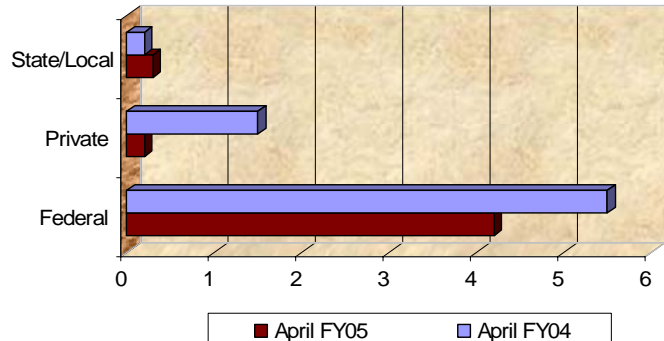
## Monthly Report Summary - April 2005

SAM ACTIVITY	April FY2005	YTD FY04 July-April	YTD FY05 July-April	YTD % Change
<b>Award Totals</b>				
<b>Source</b>				
Federal	\$4,170,191	\$95,136,197	\$90,585,775	(4.8)
Private	\$229,734	\$7,035,326	\$14,745,770	109.6
State	\$311,232	\$7,370,349	\$4,454,145	(39.6)
<b>Purpose</b>				
Research	\$3,511,413	\$74,453,032	\$68,421,415	(8.1)
Public Service	\$1,199,744	\$35,088,840	\$41,364,275	17.9
<b>Sponsors</b>				
NIH	\$987,024	\$20,683,413	\$19,820,470	(4.2)
NSF	\$1,164,718	\$10,238,787	\$7,816,919	(23.7)
<b>Proposals</b>				
Submissions	118	1264	1224	(3.2)
Dollars Requested	\$27,046,534	\$190,312,972	\$199,680,277	4.9
<b>Expenditures</b>				
Research Direct	\$4,643,927	\$53,572,701	\$51,632,835	(3.6)
Research IDC	\$1,236,648	\$13,873,989	\$13,668,297	(1.5)
<b>Notable Areas</b>				
Health Science Colleges	\$1,188,128	\$42,531,174	\$48,975,621	15.2
Education	\$466,382	\$3,412,262	\$3,860,549	13.1
Engineering & IT	\$604,912	\$15,795,663	\$16,218,262	2.7
Arts and Sciences	\$2,284,246	\$34,850,617	\$29,899,438	(14.2)
Senior and Regional Campuses	\$97,814	\$5,428,259	\$4,221,169	(22.2)

**Summary by Purpose**



**Summary by Source**



Amounts Received (In millions of dollars)

## Awards by Department

<u>CAMPUS</u>	CURRENT MONTH April FY2005	YEAR TO DATE FY 2004 (July-April)	YEAR TO DATE FY 2005 (July-April)
<b>Arts and Sciences, College of</b>			
African-American Studies Program	0	0	9,000
Anthropology	0	81,125	13,500
Archaeology & Anthropology, SC Institute of	0	1,014,763	1,289,572
Art	0	80,444	11,000
Baruch Institute	64,434	4,073,020	4,869,648
Biological Sciences	899,457	7,002,584	5,605,381
Chemistry & Biochemistry	337,958	5,755,246	4,000,636
COBRE: Center for Colon Cancer Research	0	0	2,219,480
Comparative Literature	0	24,000	0
Criminology & Criminal Justice, Department of	27,674	225,490	492,716
English	0	81,701	46,133
English Program for Internationals	0	229,309	0
Geography	21,877	979,342	1,213,742
Geological Sciences	114,528	3,014,913	1,943,363
History	0	102,078	150,220
Languages, Literatures, and Cultures, Department of	0	0	9,542
Liberal Arts - (Dean)	0	0	0
Marine Science	0	50,000	0
Mathematics	53,880	958,039	768,715
McKissick Museum	20,000	101,184	107,145
Naval Science	0	3,000	3,000
Philosophy	0	1,350,000	0
Physics & Astronomy	382,251	1,833,278	1,314,911
Political Science	0	197,741	66,146
Psychology	294,638	5,251,777	3,853,998
Public Service & Policy Research, Institute for	17,564	827,611	620,800
Religious Studies	0	15,000	4,000
Science & Math Administration	0	0	578,780
Science Education, Center for	0	12,400	12,400
Sociology	0	100,000	159,652
Southern Studies, Institute for	0	830,040	131,033
Statistics	49,985	636,282	381,300
Theatre and Dance, Department of	0	20,250	23,625
<b>Total:</b>	<b>2,284,246</b>	<b>34,850,617</b>	<b>29,899,438</b>

## Awards by Department

<u>CAMPUS</u>	CURRENT MONTH April FY2005	YEAR TO DATE FY 2004 (July-April)	YEAR TO DATE FY 2005 (July-April)
<b>Business &amp; Finance</b>			
Campus Services	0	5,875	0
Facilities Management/Operational Services	0	6,600	6,200
Recycling & Waste Management	0	0	7,500
<b>Total:</b>	<b>0</b>	<b>12,475</b>	<b>13,700</b>
<b>Business, Moore School of</b>			
Business, Moore School of - Division of Research	0	521,952	455,289
Small Business Development Center	33,216	883,297	792,401
<b>Total:</b>	<b>33,216</b>	<b>1,405,249</b>	<b>1,247,690</b>
<b>Education, College of</b>			
Education	0	169,637	279,680
Education Leadership & Policies	0	244,832	39,881
Educational Studies, Department of	0	464,755	416,652
Instruction & Teacher Education	309,171	1,908,062	2,078,566
Office of Program Evaluation	143,211	462,217	680,426
Physical Education	14,000	24,000	42,151
SC Educational Policy Center	0	0	323,193
School Improvement Council Assistance	0	138,759	0
<b>Total:</b>	<b>466,382</b>	<b>3,412,262</b>	<b>3,860,549</b>
<b>Engineering &amp; Information Technology, College of</b>			
Chemical Engineering	510,382	2,697,411	4,504,159
Civil & Environmental Engineering	3,000	967,557	377,163
Computer Science & Engineering	12,000	1,402,826	541,570
Electrical Engineering	6,000	8,565,456	7,067,165
Engineering & Information Technology, College of	0	450,972	61,614
Mechanical Engineering	73,530	1,711,441	3,441,607
SC Alliance for Minority Participation (SCAMP)	0	0	224,984
<b>Total:</b>	<b>604,912</b>	<b>15,795,663</b>	<b>16,218,262</b>
<b>English Program for Internationals</b>			
English Program for Internationals	0	0	2,066
<b>Total:</b>	<b>0</b>	<b>0</b>	<b>2,066</b>
<b>Enrollment Management</b>			
Student Financial Aid & Scholarships	0	38,335	39,335
<b>Total:</b>	<b>0</b>	<b>38,335</b>	<b>39,335</b>

## Awards by Department

<u>CAMPUS</u>	CURRENT MONTH April FY2005	YEAR TO DATE FY 2004 (July-April)	YEAR TO DATE FY 2005 (July-April)
<b>Environment, School of the</b>			
Earth Sciences & Resources Institute	0	945,699	848,160
Environment, School of the	10,000	873,072	709,927
<b>Total:</b>	<b>10,000</b>	<b>1,818,771</b>	<b>1,558,087</b>
<b>Honors College, South Carolina</b>			
Honors College, South Carolina	0	4,000	12,654
<b>Total:</b>	<b>0</b>	<b>4,000</b>	<b>12,654</b>
<b>Hospitality, Retail &amp; Sport Management, College of</b>			
Retailing, Department of	0	20,000	19,984
Sport & Entertainment Management	0	13,500	0
<b>Total:</b>	<b>0</b>	<b>33,500</b>	<b>19,984</b>
<b>Information Technology, Office of</b>			
Information Technology, Office of	0	20,000	0
<b>Total:</b>	<b>0</b>	<b>20,000</b>	<b>0</b>
<b>Law Enforcement &amp; Safety</b>			
Law Enforcement & Safety	0	0	23,030
<b>Total:</b>	<b>0</b>	<b>0</b>	<b>23,030</b>
<b>Law, School of</b>			
Law, School of	0	1,473,165	1,329,042
<b>Total:</b>	<b>0</b>	<b>1,473,165</b>	<b>1,329,042</b>
<b>Mass Communications &amp; Information Studies, College</b>			
Journalism & Mass Communications, School of	14,690	201,099	108,924
Library & Information Sciences, School of	11,769	721,307	15,473
Mass Communications & Information Studies, College of	0	0	58,257
<b>Total:</b>	<b>26,459</b>	<b>922,406</b>	<b>182,654</b>

## Awards by Department

<u>CAMPUS</u>	CURRENT MONTH April FY2005	YEAR TO DATE FY 2004 (July-April)	YEAR TO DATE FY 2005 (July-April)
<b>Medicine, School of</b>			
Animal Resources Facility	0	0	165,738
Cancer Center, South Carolina	0	0	276,005
Cell & Developmental Biology & Anatomy	252,875	2,519,219	2,393,358
Cell Biology & Neurosciences	0	227,588	227,588
Dean's Office	0	0	115,088
Family & Preventive Medicine	354,545	530,838	1,198,811
Internal Medicine	26,427	3,588,496	4,891,261
Medicine Library	0	266,316	0
Medicine, School of - (Dean)	0	673,900	0
Microbiology & Immunology	0	583,402	0
Neuropsychiatry	50,150	341,268	986,578
Obstetrics & Gynecology	4,618	123,952	1,141,953
Ophthalmology	0	11,510	951,804
Orthopaedic Surgery	0	0	564,661
Pathology	258,100	0	311,423
Pathology & Microbiology	0	492,288	593,002
Pediatrics	0	1,857,742	4,753,024
Pharmacology, Physiology & Neuroscience	0	877,243	1,198,970
Radiology	0	472,613	0
Research & Special Projects	0	0	179,000
Surgery	0	37,766	1,265,139
<b>Total:</b>	<b>946,715</b>	<b>12,604,141</b>	<b>21,213,403</b>
<b>Music, School of</b>			
Music, School of	0	39,955	6,000
<b>Total:</b>	<b>0</b>	<b>39,955</b>	<b>6,000</b>
<b>Nursing, College of</b>			
Academic & Student Affairs	0	0	-68,735
Family & Community Health Nursing	0	0	48,330
Nursing	0	1,169,715	531,472
<b>Total:</b>	<b>0</b>	<b>1,169,715</b>	<b>511,067</b>
<b>Pharmacy, College of</b>			
Basic Pharmaceutical Sciences	0	663,611	942,459
Palmetto Poison Center	0	0	482,330
Pharmaceutical & Health Outcomes Sciences	0	0	64,413
Pharmacy - (Dean)	0	13,500	0
Pharmacy - (General)	0	866,800	0
Pharmacy Practice	23,000	94,850	160,000
<b>Total:</b>	<b>23,000</b>	<b>1,638,761</b>	<b>1,649,202</b>

## Awards by Department

<u>CAMPUS</u>	CURRENT MONTH April FY2005	YEAR TO DATE FY 2004 (July-April)	YEAR TO DATE FY 2005 (July-April)
<b>Provost, Office of the</b>			
Provost, Office of the	0	4,267	5,000
TRIO Programs	0	1,251,110	1,236,885
<b>Total:</b>	<b>0</b>	<b>1,255,377</b>	<b>1,241,885</b>
<b>Public Health, Arnold School of</b>			
Communication Sciences & Disorders	0	88,095	80,250
Environmental Health Sciences	35,000	3,508,656	1,595,121
Epidemiology & Biostatistics	0	3,956,682	3,197,547
Exercise Science	4,500	3,313,489	2,440,087
Health Promotion, Education & Behavior	0	3,190,083	1,059,632
Health Services & Policy Research, Center for	0	705,328	1,154,959
Health Services Policy and Management	0	1,613,614	747,651
Prevention Research Center	17,951	1,692,893	2,045,771
Public Health, Arnold School of - Dean	75,000	430,311	3,771,778
Research & Nutrition & Health Disparities, Center for	0	0	964,583
<b>Total:</b>	<b>132,451</b>	<b>18,499,151</b>	<b>17,057,379</b>
<b>Research &amp; Health Sciences, Vice President</b>			
Biomedical Research Infrastructure Network (BRIN)	0	0	296,370
NanoCenter	0	0	9,550
Research, Vice President for	0	0	-26,221
Research, Vice President for - (General)	0	0	580,749
Sponsored Awards Management	0	169,510	12,445
<b>Total:</b>	<b>0</b>	<b>169,510</b>	<b>872,893</b>
<b>Senior and Regional Campuses</b>			
USC Aiken	3,000	1,100,048	1,261,176
USC Beaufort	0	364,649	670,460
USC Lancaster	49,214	462,031	525,445
USC Salkehatchie	45,600	505,203	528,890
USC Sumter	0	260,182	263,682
USC Union	0	227,407	0
USC Upstate	0	2,508,739	971,516
<b>Total:</b>	<b>97,814</b>	<b>5,428,259</b>	<b>4,221,169</b>
<b>Social Work, College of</b>			
Families in Society, Institute for	50,702	3,112,951	1,618,607
Social Work, College of	35,260	5,506,455	6,925,963
<b>Total:</b>	<b>85,962</b>	<b>8,619,406</b>	<b>8,544,570</b>

## Awards by Department

### CAMPUS

**Student Affairs, Division of**  
 International Programs for Students  
 Student Health  
 Student Life

	<b>CURRENT MONTH</b> April FY2005	<b>YEAR TO DATE</b> FY 2004 (July-April)	<b>YEAR TO DATE</b> FY 2005 (July-April)
	0	0	3,296
	0	311,154	0
	0	20,000	58,335
<b>Total:</b>	<b>0</b>	<b>331,154</b>	<b>61,631</b>
<b>Report Total:</b>	<b>4,711,157</b>	<b>109,541,872</b>	<b>109,785,690</b>

## Awards Received by Source

July-April YTD (FY2005)

	Federal	Non Profit	State	Commercial	Local	Other
<b>Arts and Sciences, College of</b>						
African-American Studies Program	-	-	9,000	-	-	-
Anthropology	-	10,500	3,000	-	-	-
Archaeology & Anthropology, SC Institute of	1,178,886	-	103,385	-	7,301	-
Art	-	10,000	-	-	1,000	-
Baruch Institute	4,869,648	-	-	-	-	-
Biological Sciences	5,554,226	31,090	20,065	-	-	-
Chemistry & Biochemistry	3,698,862	139,369	48,595	113,810	-	-
COBRE: Center for Colon Cancer Research	2,219,480	-	-	-	-	-
Criminology & Criminal Justice, Department	474,216	-	18,500	-	-	-
English	46,133	-	-	-	-	-
Geography	924,578	58,900	230,264	-	-	-
Geological Sciences	1,669,763	-	-	15,600	-	258,000
History	40,000	32,064	61,036	12,120	5,000	-
Languages, Literatures, and Cultures, Depart	-	9,542	-	-	-	-
Liberal Arts - (Dean)	-	-	-	-	-	-
Mathematics	720,284	-	48,431	-	-	-
McKissick Museum	107,145	-	-	-	-	-
Naval Science	3,000	-	-	-	-	-
Physics & Astronomy	1,228,739	26,450	25,322	34,400	-	-
Political Science	15,000	-	3,181	-	47,965	-
Psychology	3,790,090	-	15,000	11,430	170,890	6,561
Public Service & Policy Research, Institute fo	433,610	32,113	70,000	-	-	85,077
Religious Studies	-	4,000	-	-	-	-
Science & Math Administration	578,780	-	-	-	-	-
Science Education, Center for	12,400	-	-	-	-	-
Sociology	159,652	-	-	-	-	-
Southern Studies, Institute for	131,033	-	-	-	-	-
Statistics	242,098	-	46,498	92,704	-	-
Theatre and Dance, Department of	-	-	23,625	-	-	-
<b>Total:</b>	<b>28,097,623</b>	<b>214,055</b>	<b>725,902</b>	<b>280,064</b>	<b>232,156</b>	<b>349,638</b>
<b>Business &amp; Finance</b>						
Facilities Management/Operational Services	6,200	-	-	-	-	-
Recycling & Waste Management	-	-	7,500	-	-	-
<b>Total:</b>	<b>6,200</b>	<b>-</b>	<b>7,500</b>	<b>-</b>	<b>-</b>	<b>-</b>
<b>Business, Moore School of</b>						
Business, Moore School of - Division of Rese	365,644	7,370	7,130	31,812	-	43,333
Small Business Development Center	792,401	-	-	-	-	-
<b>Total:</b>	<b>1,158,045</b>	<b>7,370</b>	<b>7,130</b>	<b>31,812</b>	<b>-</b>	<b>43,333</b>
<b>Education, College of</b>						
Education	273,587	-	6,093	-	-	-
Education Leadership & Policies	39,881	-	-	-	-	-

# Awards Received by Source

July-April YTD (FY2005)

	Federal	Non Profit	State	Commercial	Local	Other
Educational Studies, Department of	416,652	-	-	-	-	-
Instruction & Teacher Education	1,526,443	-	448,844	103,279	-	-
Office of Program Evaluation	416,626	-	263,800	-	-	-
Physical Education	-	151	-	28,000	14,000	-
SC Educational Policy Center	223,193	-	100,000	-	-	-
<b>Total:</b>	<b>2,896,382</b>	<b>151</b>	<b>818,737</b>	<b>131,279</b>	<b>14,000</b>	<b>-</b>
<b>Engineering &amp; Information Technology</b>						
Chemical Engineering	3,630,059	27,000	-	847,100	-	-
Civil & Environmental Engineering	233,643	-	-	143,520	-	-
Computer Science & Engineering	532,459	-	18,650	-	-	-
Electrical Engineering	6,926,244	-	20,760	110,361	-	9,800
Engineering & Information Technology, Colle	45,414	-	-	-	-	16,200
Mechanical Engineering	2,788,608	-	217,249	435,750	-	-
SC Alliance for Minority Participation (SCAM	184,000	-	40,984	-	-	-
<b>Total:</b>	<b>14,340,427</b>	<b>27,000</b>	<b>297,643</b>	<b>1,527,192</b>	<b>-</b>	<b>26,000</b>
<b>English Program for Internationals</b>						
English Program for Internationals	2,066	-	-	-	-	-
<b>Total:</b>	<b>2,066</b>	<b>-</b>	<b>-</b>	<b>-</b>	<b>-</b>	<b>-</b>
<b>Enrollment Management</b>						
Student Financial Aid & Scholarships	39,335	-	-	-	-	-
<b>Total:</b>	<b>39,335</b>	<b>-</b>	<b>-</b>	<b>-</b>	<b>-</b>	<b>-</b>
<b>Environment, School of the</b>						
Earth Sciences & Resources Institute	848,160	-	-	-	-	-
Environment, School of the	519,627	188,500	-	-	-	1,800
<b>Total:</b>	<b>1,367,787</b>	<b>188,500</b>	<b>-</b>	<b>-</b>	<b>-</b>	<b>1,800</b>
<b>Honors College, South Carolina</b>						
Honors College, South Carolina	8,269	-	4,385	-	-	-
<b>Total:</b>	<b>8,269</b>	<b>-</b>	<b>4,385</b>	<b>-</b>	<b>-</b>	<b>-</b>
<b>Hospitality, Retail &amp; Sport Managemen</b>						
Retailing, Department of	-	19,984	-	-	-	-
<b>Total:</b>	<b>-</b>	<b>19,984</b>	<b>-</b>	<b>-</b>	<b>-</b>	<b>-</b>
<b>Law Enforcement &amp; Safety</b>						
Law Enforcement & Safety	23,030	-	-	-	-	-
<b>Total:</b>	<b>23,030</b>	<b>-</b>	<b>-</b>	<b>-</b>	<b>-</b>	<b>-</b>
<b>Law, School of</b>						
Law, School of	1,052,149	111,424	-	-	-	165,469

# Awards Received by Source

July-April YTD (FY2005)

	Federal	Non Profit	State	Commercial	Local	Other
<b>Total:</b>	<b>1,052,149</b>	<b>111,424</b>	-	-	-	<b>165,469</b>
<b>Mass Communications &amp; Information</b>						
Journalism & Mass Communications, School	91,960	-	16,964	-	-	-
Library & Information Sciences, School of	11,769	-	-	2,954	750	-
Mass Communications & Information Studies	58,257	-	-	-	-	-
<b>Total:</b>	<b>161,986</b>	-	<b>16,964</b>	<b>2,954</b>	<b>750</b>	-
<b>Medicine, School of</b>						
Animal Resources Facility	-	165,738	-	-	-	-
Cancer Center, South Carolina	-	276,005	-	-	-	-
Cell & Developmental Biology & Anatomy	2,273,358	120,000	-	-	-	-
Cell Biology & Neurosciences	227,588	-	-	-	-	-
Dean's Office	-	115,088	-	-	-	-
Family & Preventive Medicine	483,825	646,216	68,770	-	-	-
Internal Medicine	2,751,481	2,017,986	-	106,794	-	15,000
Neuropsychiatry	199,366	680,261	87,000	19,951	-	-
Obstetrics & Gynecology	264,975	812,026	64,952	-	-	-
Ophthalmology	505,325	443,874	-	2,605	-	-
Orthopaedic Surgery	-	564,661	-	-	-	-
Pathology	273,100	38,323	-	-	-	-
Pathology & Microbiology	574,222	-	-	18,780	-	-
Pediatrics	3,948,573	570,644	164,109	69,698	-	-
Pharmacology, Physiology & Neuroscience	1,058,970	140,000	-	-	-	-
Research & Special Projects	-	1,000	50,000	70,000	-	58,000
Surgery	172,752	1,084,835	7,552	-	-	-
<b>Total:</b>	<b>12,733,535</b>	<b>7,676,657</b>	<b>442,383</b>	<b>287,828</b>	-	<b>73,000</b>
<b>Music, School of</b>						
Music, School of	-	6,000	-	-	-	-
<b>Total:</b>	-	<b>6,000</b>	-	-	-	-
<b>Nursing, College of</b>						
Academic & Student Affairs	-	-	-	-	-	-
Family & Community Health Nursing	48,330	-	-	-	-	-
Nursing	516,060	6,412	9,000	-	-	-
<b>Total:</b>	<b>495,655</b>	<b>6,412</b>	<b>9,000</b>	-	-	-
<b>Pharmacy, College of</b>						
Basic Pharmaceutical Sciences	942,459	-	-	-	-	-
Palmetto Poison Center	476,713	-	5,617	-	-	-
Pharmaceutical & Health Outcomes Science	64,413	-	-	-	-	-
Pharmacy Practice	15,500	-	7,500	37,000	-	100,000
<b>Total:</b>	<b>1,499,085</b>	-	<b>13,117</b>	<b>37,000</b>	-	<b>100,000</b>

# Awards Received by Source

July-April YTD (FY2005)

	Federal	Non Profit	State	Commercial	Local	Other
<b>Provost, Office of the</b>						
Provost, Office of the	-	-	5,000	-	-	-
TRIO Programs	1,236,885	-	-	-	-	-
<b>Total:</b>	<b>1,236,885</b>	<b>-</b>	<b>5,000</b>	<b>-</b>	<b>-</b>	<b>-</b>
<b>Public Health, Arnold School of</b>						
Communication Sciences & Disorders	72,750	-	7,500	-	-	-
Environmental Health Sciences	1,507,822	69,299	-	18,000	-	-
Epidemiology & Biostatistics	2,921,798	205,306	48,343	22,100	-	-
Exercise Science	2,171,931	160,000	-	108,156	-	-
Health Promotion, Education & Behavior	792,099	145,553	74,261	4,300	22,854	20,565
Health Services & Policy Research, Center f	953,787	43,744	61,632	-	-	95,796
Health Services Policy and Management	499,996	10,920	94,500	40,474	2,211	99,550
Prevention Research Center	1,692,527	353,244	-	-	-	-
Public Health, Arnold School of - Dean	3,569,165	202,613	-	-	-	-
Research & Nutrition & Health Disparities, C	964,583	-	-	-	-	-
<b>Total:</b>	<b>15,146,458</b>	<b>1,190,679</b>	<b>286,236</b>	<b>193,030</b>	<b>25,065</b>	<b>215,911</b>
<b>Research &amp; Health Sciences, Vice Pre</b>						
Biomedical Research Infrastructure Network	296,370	-	-	-	-	-
Families in Society, Institute for	750,031	789,494	47,411	-	-	31,671
NanoCenter	9,550	-	-	-	-	-
Research, Vice President for	-	-	-	-	-	-
Research, Vice President for - (General)	-	80,749	-	250,000	250,000	-
Sponsored Awards Management	12,445	-	-	-	-	-
<b>Total:</b>	<b>1,068,396</b>	<b>844,022</b>	<b>47,411</b>	<b>250,000</b>	<b>250,000</b>	<b>31,671</b>
<b>Social Work, College of</b>						
Social Work, College of	6,462,120	243,520	202,401	4,000	8,040	5,882
<b>Total:</b>	<b>6,462,120</b>	<b>243,520</b>	<b>202,401</b>	<b>4,000</b>	<b>8,040</b>	<b>5,882</b>
<b>Student Affairs, Division of</b>						
International Programs for Students	3,296	-	-	-	-	-
Student Health	-	-	-	-	-	-
Student Life	58,335	-	-	-	-	-
<b>Total:</b>	<b>61,631</b>	<b>-</b>	<b>-</b>	<b>-</b>	<b>-</b>	<b>-</b>
<b>USC Aiken</b>						
USC Aiken	705,522	40,000	465,654	-	50,000	-
<b>Total:</b>	<b>705,522</b>	<b>40,000</b>	<b>465,654</b>	<b>-</b>	<b>50,000</b>	<b>-</b>
<b>USC Beaufort</b>						
USC Beaufort	401,893	85,000	133,567	-	50,000	-
<b>Total:</b>	<b>401,893</b>	<b>85,000</b>	<b>133,567</b>	<b>-</b>	<b>50,000</b>	<b>-</b>

# Awards Received by Source

July-April YTD (FY2005)

	Federal	Non Profit	State	Commercial	Local	Other
<b>USC Lancaster</b>						
USC Lancaster	472,231	-	53,214	-	-	-
<b>Total:</b>	<b>472,231</b>	<b>-</b>	<b>53,214</b>	<b>-</b>	<b>-</b>	<b>-</b>
<b>USC Salkehatchie</b>						
USC Salkehatchie	268,202	211,500	49,188	-	-	-
<b>Total:</b>	<b>268,202</b>	<b>211,500</b>	<b>49,188</b>	<b>-</b>	<b>-</b>	<b>-</b>
<b>USC Sumter</b>						
USC Sumter	36,275	-	227,407	-	-	-
<b>Total:</b>	<b>36,275</b>	<b>-</b>	<b>227,407</b>	<b>-</b>	<b>-</b>	<b>-</b>
<b>USC Upstate</b>						
USC Upstate	844,588	86,783	11,295	26,000	-	2,850
<b>Total:</b>	<b>844,588</b>	<b>86,783</b>	<b>11,295</b>	<b>26,000</b>	<b>-</b>	<b>2,850</b>
	<b>90,585,775</b>	<b>10,959,057</b>	<b>3,824,134</b>	<b>2,771,159</b>	<b>630,011</b>	<b>1,015,554</b>

## Awards Received by Unit and Purpose

July-April YTD - FY2005

	Research	Service	Training	GA	Equip.	Total
<b>Arts and Sciences, College of</b>						
African-American Studies Program	-	9,000	-	-	-	9,000
Anthropology	10,500	-	-	3,000	-	13,500
Archaeology & Anthropology, SC Institute of	1,112,894	176,678	-	-	-	1,289,572
Art	11,000	-	-	-	-	11,000
Baruch Institute	4,869,648	-	-	-	-	4,869,648
Biological Sciences	5,356,120	249,261	-	-	-	5,605,381
Chemistry & Biochemistry	3,885,529	40,837	36,000	38,270	-	4,000,636
COBRE: Center for Colon Cancer Research	2,219,480	-	-	-	-	2,219,480
Criminology & Criminal Justice, Department of	465,042	27,674	-	-	-	492,716
English	30,633	15,500	-	-	-	46,133
Geography	924,578	-	268,408	20,756	-	1,213,742
Geological Sciences	1,992,761	15,600	-	-	-	1,943,363
History	40,000	-	-	110,220	-	150,220
Languages, Literatures, and Cultures, Department of	-	9,542	-	-	-	9,542
Liberal Arts - (Dean)	-	-	-	-	-	0
Mathematics	768,715	-	-	-	-	768,715
McKissick Museum	22,450	84,695	-	-	-	107,145
Naval Science	-	-	3,000	-	-	3,000
Physics & Astronomy	1,314,911	-	-	-	-	1,314,911
Political Science	15,000	-	-	51,146	-	66,146
Psychology	3,650,117	71,200	-	132,681	-	3,853,998
Public Service & Policy Research, Institute for	362,212	258,588	-	-	-	620,800
Religious Studies	4,000	-	-	-	-	4,000
Science & Math Administration	163,670	-	415,110	-	-	578,780
Science Education, Center for	12,400	-	-	-	-	12,400
Sociology	159,652	-	-	-	-	159,652
Southern Studies, Institute for	131,033	-	-	-	-	131,033
Statistics	249,298	49,985	15,728	66,289	-	381,300
Theatre and Dance, Department of	-	-	-	23,625	-	23,625
<b>Total:</b>	<b>27,771,643</b>	<b>1,008,560</b>	<b>738,246</b>	<b>380,989</b>	<b>-</b>	<b>29,899,438</b>
<b>Business &amp; Finance</b>						
Facilities Management/Operational Services	-	-	6,200	-	-	6,200
Recycling & Waste Management	-	7,500	-	-	-	7,500
<b>Total:</b>	<b>-</b>	<b>7,500</b>	<b>6,200</b>	<b>-</b>	<b>-</b>	<b>13,700</b>
<b>Business, Moore School of</b>						
Business, Moore School of - Division of Research	455,289	-	-	-	-	455,289
Small Business Development Center	-	792,401	-	-	-	792,401
<b>Total:</b>	<b>455,289</b>	<b>792,401</b>	<b>-</b>	<b>-</b>	<b>-</b>	<b>1,247,690</b>

	Research	Service	Training	GA	Equip.	Total
<b>Education, College of</b>						
Education	-	273,587	6,093	-	-	279,680
Education Leadership & Policies	39,881	-	-	-	-	39,881
Educational Studies, Department of	43,488	37,500	335,664	-	-	416,652
Instruction & Teacher Education	8,000	726,321	1,344,245	-	-	2,078,566
Office of Program Evaluation	326,226	283,400	70,800	-	-	680,426
Physical Education	-	151	-	42,000	-	42,151
SC Educational Policy Center	243,193	80,000	-	-	-	323,193
<b>Total:</b>	<b>660,788</b>	<b>1,400,959</b>	<b>1,756,802</b>	<b>42,000</b>	<b>-</b>	<b>3,860,549</b>
<b>Engineering &amp; Information Technology, College of</b>						
Chemical Engineering	4,434,734	-	2,000	-	67,425	4,504,159
Civil & Environmental Engineering	377,163	-	-	-	-	377,163
Computer Science & Engineering	532,459	-	-	9,111	-	541,570
Electrical Engineering	7,067,165	-	-	-	-	7,067,165
Engineering & Information Technology, College of	45,414	16,200	-	-	-	61,614
Mechanical Engineering	2,871,862	-	527,023	42,722	-	3,441,607
SC Alliance for Minority Participation (SCAMP)	224,984	-	-	-	-	224,984
<b>Total:</b>	<b>15,553,781</b>	<b>16,200</b>	<b>529,023</b>	<b>51,833</b>	<b>67,425</b>	<b>16,218,262</b>
<b>English Program for Internationals</b>						
English Program for Internationals	-	-	2,066	-	-	2,066
<b>Total:</b>	<b>-</b>	<b>-</b>	<b>2,066</b>	<b>-</b>	<b>-</b>	<b>2,066</b>
<b>Enrollment Management</b>						
Student Financial Aid & Scholarships	-	39,335	-	-	-	39,335
<b>Total:</b>	<b>-</b>	<b>39,335</b>	<b>-</b>	<b>-</b>	<b>-</b>	<b>39,335</b>
<b>Environment, School of the</b>						
Earth Sciences & Resources Institute	848,160	-	-	-	-	848,160
Environment, School of the	663,127	45,000	1,800	-	-	709,927
<b>Total:</b>	<b>1,511,287</b>	<b>45,000</b>	<b>1,800</b>	<b>-</b>	<b>-</b>	<b>1,558,087</b>
<b>Honors College, South Carolina</b>						
Honors College, South Carolina	-	4,385	-	8,269	-	12,654
<b>Total:</b>	<b>-</b>	<b>4,385</b>	<b>-</b>	<b>8,269</b>	<b>-</b>	<b>12,654</b>
<b>Hospitality, Retail &amp; Sport Management, College of</b>						
Retailing, Department of	-	19,984	-	-	-	19,984
<b>Total:</b>	<b>-</b>	<b>19,984</b>	<b>-</b>	<b>-</b>	<b>-</b>	<b>19,984</b>
<b>Law Enforcement &amp; Safety</b>						
Law Enforcement & Safety	-	-	-	-	23,030	23,030
<b>Total:</b>	<b>-</b>	<b>-</b>	<b>-</b>	<b>-</b>	<b>23,030</b>	<b>23,030</b>
<b>Law, School of</b>						
Law, School of	-	1,329,042	-	-	-	1,329,042

	Research	Service	Training	GA	Equip.	Total
<b>Total:</b>	-	1,329,042	-	-	-	1,329,042
<b>Mass Communications &amp; Information Studies, College of</b>						
Journalism & Mass Communications, School of	-	92,993	-	16,964	-	108,924
Library & Information Sciences, School of	-	-	11,769	3,704	-	15,473
Mass Communications & Information Studies, College o	58,257	-	-	-	-	58,257
<b>Total:</b>	<b>57,224</b>	<b>92,993</b>	<b>11,769</b>	<b>20,668</b>	-	<b>182,654</b>
<b>Medicine, School of</b>						
Animal Resources Facility	-	165,738	-	-	-	165,738
Cancer Center, South Carolina	-	276,005	-	-	-	276,005
Cell & Developmental Biology & Anatomy	2,393,358	-	-	-	-	2,393,358
Cell Biology & Neurosciences	227,588	-	-	-	-	227,588
Dean's Office	-	115,088	-	-	-	115,088
Family & Preventive Medicine	-	1,178,811	20,000	-	-	1,198,811
Internal Medicine	820,946	4,072,315	-	-	-	4,891,261
Neuropsychiatry	219,317	767,261	-	-	-	986,578
Obstetrics & Gynecology	264,975	826,978	50,000	-	-	1,141,953
Ophthalmology	507,930	443,874	-	-	-	951,804
Orthopaedic Surgery	-	564,661	-	-	-	564,661
Pathology	273,100	38,323	-	-	-	311,423
Pathology & Microbiology	513,812	43,000	35,410	780	-	593,002
Pediatrics	93,581	4,585,700	73,743	-	-	4,753,024
Pharmacology, Physiology & Neuroscience	1,157,600	-	41,370	-	-	1,198,970
Research & Special Projects	128,000	51,000	-	-	-	179,000
Surgery	180,304	1,084,835	-	-	-	1,265,139
<b>Total:</b>	<b>6,780,511</b>	<b>14,213,589</b>	<b>218,523</b>	<b>780</b>	-	<b>21,213,403</b>
<b>Music, School of</b>						
Music, School of	-	6,000	-	-	-	6,000
<b>Total:</b>	-	<b>6,000</b>	-	-	-	<b>6,000</b>
<b>Nursing, College of</b>						
Academic & Student Affairs	-	-	-	-	-	-68,735
Family & Community Health Nursing	-	-	48,330	-	-	48,330
Nursing	348,786	5,412	177,274	-	-	531,472
<b>Total:</b>	<b>324,538</b>	<b>5,412</b>	<b>182,104</b>	-	-	<b>511,067</b>
<b>Pharmacy, College of</b>						
Basic Pharmaceutical Sciences	942,459	-	-	-	-	942,459
Palmetto Poison Center	-	482,330	-	-	-	482,330
Pharmaceutical & Health Outcomes Sciences	64,413	-	-	-	-	64,413
Pharmacy Practice	37,000	115,500	7,500	-	-	160,000
<b>Total:</b>	<b>1,043,872</b>	<b>597,830</b>	<b>7,500</b>	-	-	<b>1,649,202</b>
<b>Provost, Office of the</b>						
Provost, Office of the	5,000	-	-	-	-	5,000
TRIO Programs	-	1,262,456	-	-	-	1,236,885

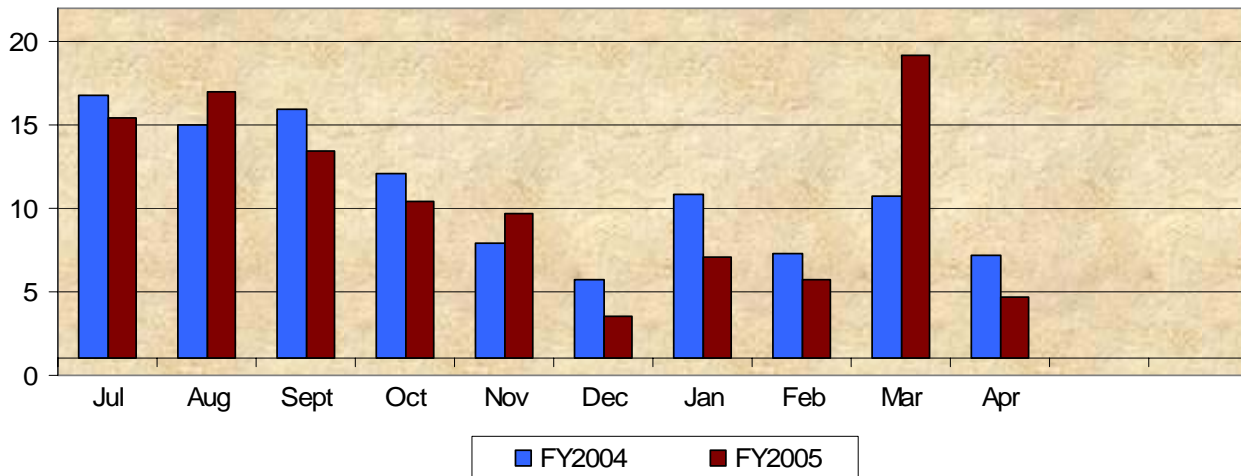
	Research	Service	Training	GA	Equip.	Total
<b>Total:</b>	-	1,262,456	-	-	-	1,241,885
<b>Public Health, Arnold School of</b>						
Communication Sciences & Disorders	72,750	-	7,500	-	-	80,250
Environmental Health Sciences	1,510,031	-	67,090	18,000	-	1,595,121
Epidemiology & Biostatistics	3,226,298	-	-	-	-	3,197,547
Exercise Science	2,413,331	-	-	26,756	-	2,440,087
Health Promotion, Education & Behavior	939,765	31,952	-	87,915	-	1,059,632
Health Services & Policy Research, Center for	627,217	510,903	16,839	-	-	1,154,959
Health Services Policy and Management	544,156	-	-	203,495	-	747,651
Prevention Research Center	2,045,771	-	-	-	-	2,045,771
Public Health, Arnold School of - Dean	-	190,613	3,581,165	-	-	3,771,778
Research & Nutrition & Health Disparities, Center for	956,585	7,998	-	-	-	964,583
<b>Total:</b>	<b>12,335,904</b>	<b>741,466</b>	<b>3,672,594</b>	<b>307,415</b>	-	<b>17,057,379</b>
<b>Research &amp; Health Sciences, Vice President</b>						
Biomedical Research Infrastructure Network (BRIN)	296,370	-	-	-	-	296,370
Families in Society, Institute for	890,031	728,576	-	-	-	1,618,607
NanoCenter	9,550	-	-	-	-	9,550
Research, Vice President for	-	-	-	-	-	-26,221
Research, Vice President for - (General)	330,749	-	-	-	250,000	580,749
Sponsored Awards Management	12,445	-	-	-	-	12,445
<b>Total:</b>	<b>1,512,924</b>	<b>728,576</b>	-	-	<b>250,000</b>	<b>2,491,500</b>
<b>Social Work, College of</b>						
Social Work, College of	20,000	1,126,162	5,724,087	55,714	-	6,925,963
<b>Total:</b>	<b>20,000</b>	<b>1,126,162</b>	<b>5,724,087</b>	<b>55,714</b>	-	<b>6,925,963</b>
<b>Student Affairs, Division of</b>						
International Programs for Students	-	-	3,296	-	-	3,296
Student Health	-	-	-	-	-	0
Student Life	-	58,335	-	-	-	58,335
<b>Total:</b>	-	<b>58,335</b>	<b>3,296</b>	-	-	<b>61,631</b>
<b>USC Aiken</b>						
USC Aiken	113,882	765,168	382,126	-	-	1,261,176
<b>Total:</b>	<b>113,882</b>	<b>765,168</b>	<b>382,126</b>	-	-	<b>1,261,176</b>
<b>USC Beaufort</b>						
USC Beaufort	97,461	407,153	90,846	-	75,000	670,460
<b>Total:</b>	<b>97,461</b>	<b>407,153</b>	<b>90,846</b>	-	<b>75,000</b>	<b>670,460</b>
<b>USC Lancaster</b>						
USC Lancaster	-	525,445	-	-	-	525,445
<b>Total:</b>	-	<b>525,445</b>	-	-	-	<b>525,445</b>
<b>USC Salkehatchie</b>						
USC Salkehatchie	-	528,890	-	-	-	528,890

	<b>Research</b>	<b>Service</b>	<b>Training</b>	<b>GA</b>	<b>Equip.</b>	<b>Total</b>
<b>Total:</b>	-	<b>528,890</b>	-	-	-	<b>528,890</b>
<b>USC Sumter</b>						
USC Sumter	-	263,682	-	-	-	263,682
<b>Total:</b>	-	<b>263,682</b>	-	-	-	<b>263,682</b>
<b>USC Upstate</b>						
USC Upstate	202,882	752,821	10,813	5,000	-	971,516
<b>Total:</b>	<b>202,882</b>	<b>752,821</b>	<b>10,813</b>	<b>5,000</b>	-	<b>971,516</b>
	<b>68,421,415</b>	<b>26,739,344</b>	<b>13,337,795</b>	<b>871,681</b>	<b>415,455</b>	<b>109,785,690</b>

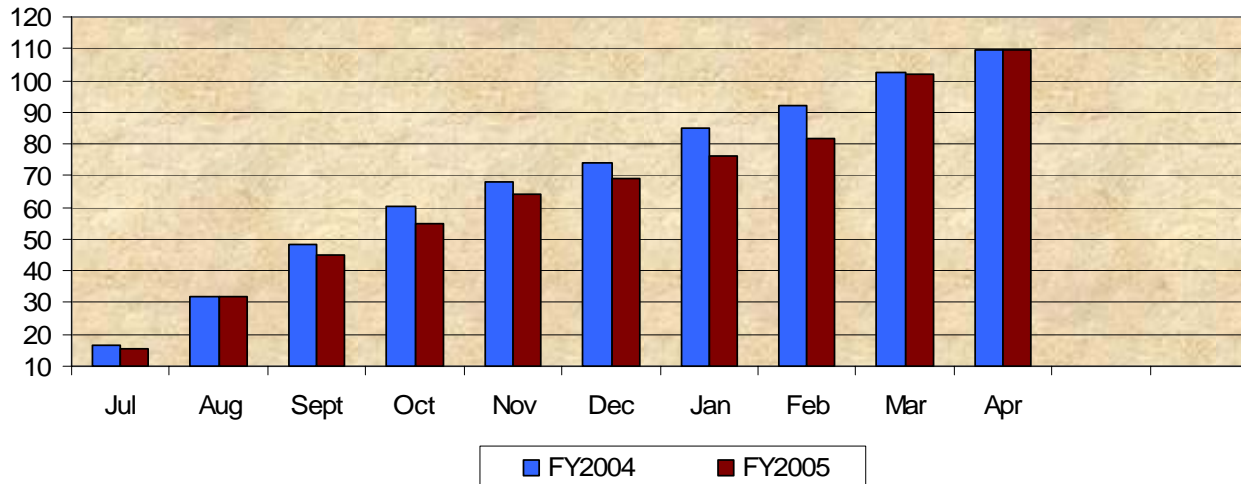
## Funding Agency Comparison Report Year-To-Date - April - 2005

	<u>FY2004</u>	<u>FY2005</u>	<u>% CHG</u>
<b>NIH Awards</b>	\$20,683,413	\$19,820,470	(4.2)
<b>Dept. Of Education Awards</b>	\$8,289,287	\$7,524,076	(9.2)
<b>Dept. Of Defense Awards</b>	\$11,954,956	\$11,591,780	(3.0)
<b>NSF Awards</b>	\$10,238,787	\$7,816,919	(23.7)
<b>Non Profit Awards</b>	\$7,358,545	\$10,639,971	44.6
<b>State and Municipalities Awards</b>	\$3,374,896	\$5,568,824	65.0
<b>Dept. Of Energy Awards</b>	\$3,641,118	\$4,756,094	30.6
<b>Business and Industry Awards</b>	\$2,157,689	\$3,158,432	46.4

**Amounts Awarded (In millions of dollars)**



**Cumulative Amounts Awarded (In millions of dollars)**



## Proposals by Department

<u>CAMPUS</u>	CURRENT MONTH April FY2005		YEAR TO DATE FY 2004 (July-April)		YEAR TO DATE FY 2005 (July-April)	
<b>Arts and Sciences, College of</b>						
African-American Studies Program	1	100,000	0	0	1	100,000
Anthropology	0	0	3	201,847	4	236,028
Archaeology & Anthropology, SC Institute of	0	0	14	1,881,980	10	1,114,715
Art	0	0	7	179,714	2	31,098
Baruch Institute	10	2,172,310	19	7,027,484	38	7,510,892
Biological Sciences	3	37,496	90	11,906,635	52	9,371,152
Chemistry & Biochemistry	8	942,539	69	23,587,635	72	21,062,453
COBRE: Center for Colon Cancer Research	0	0	0	0	2	200,226
Comparative Literature	0	0	4	140,000	0	0
Criminology & Criminal Justice, Department of	0	0	7	650,691	11	736,461
English	0	0	12	442,362	3	56,136
English Program for Internationals	0	0	1	276,754	0	0
Geography	1	748,668	13	697,964	20	2,049,087
Geological Sciences	2	97,593	52	6,445,786	38	5,232,617
History	2	15,150	9	110,258	17	804,766
International Studies, Institute of	0	0	0	0	1	7,500
Languages, Literatures, and Cultures, Department of	0	0	0	0	2	13,042
Liberal Arts - (Dean)	0	0	0	0	2	19,970
Linguistics Program	0	0	1	1,996	1	11,936
Marine Science	0	0	2	119,156	0	0
Mathematics	0	0	15	1,421,681	17	1,034,624
McKissick Museum	0	0	6	567,971	4	55,099
Naval Science	0	0	0	0	1	3,000
Philosophy	0	0	3	298,947	2	2,408,309
Physics & Astronomy	3	41,500	35	6,350,525	38	6,248,220
Political Science	0	0	10	280,168	11	409,599
Psychology	3	1,636,509	35	10,140,672	36	13,673,121
Public Service & Policy Research, Institute for	2	64,936	13	2,005,696	10	255,261
Religious Studies	0	0	2	15,000	0	0
Science Education, Center for	0	0	4	2,585,229	0	0
Sociology	1	205,178	7	746,192	8	522,511
Statistics	3	113,865	12	757,605	14	919,296
Theatre and Dance, Department of	0	0	3	27,750	1	23,625
Women's Studies	0	0	0	0	1	107,237
<b>Total:</b>	<b>39</b>	<b>6,175,744</b>	<b>448</b>	<b>78,867,698</b>	<b>419</b>	<b>74,217,981</b>
<b>Business &amp; Finance</b>						
Campus Services	0	0	1	7,430	0	0
Facilities Management/Operational Services	0	0	1	6,600	1	6,200
Recycling & Waste Management	0	0	0	0	1	7,500

## Proposals by Department

<u>CAMPUS</u>	CURRENT MONTH April FY2005		YEAR TO DATE FY 2004 (July-April)		YEAR TO DATE FY 2005 (July-April)	
<b>Total:</b>	<b>0</b>	<b>0</b>	<b>2</b>	<b>14,030</b>	<b>2</b>	<b>13,700</b>
<b>Business, Moore School of</b>						
Business, Moore School of - Dean's Office	1	151,188	1	95,637	3	405,644
Business, Moore School of - Division of Research	1	30,030	6	199,616	13	3,252,377
Economics, Department of	0	0	1	35,480	0	0
Small Business Development Center	1	149,902	0	0	1	149,902
<b>Total:</b>	<b>3</b>	<b>331,120</b>	<b>8</b>	<b>330,733</b>	<b>17</b>	<b>3,807,923</b>
<b>Education, College of</b>						
Education	0	0	3	75,515	3	364,498
Education Leadership & Policies	0	0	3	434,486	1	3,721
Educational Studies, Department of	1	39,447	7	527,590	7	315,312
Instruction & Teacher Education	2	335,394	19	3,782,694	24	2,251,757
Office of Program Evaluation	1	36,369	9	648,211	12	596,223
Physical Education	0	0	2	24,000	1	14,000
<b>Total:</b>	<b>4</b>	<b>411,210</b>	<b>43</b>	<b>5,492,496</b>	<b>48</b>	<b>3,545,511</b>
<b>Engineering &amp; Information Technology, College of</b>						
Chemical Engineering	4	340,665	45	5,822,488	50	11,214,249
Civil & Environmental Engineering	2	72,549	29	1,594,485	41	2,626,979
Computer Science & Engineering	2	308,269	33	4,044,491	31	3,236,196
Electrical Engineering	5	283,787	29	8,087,755	35	5,277,165
Engineering & Information Technology, College of	3	160,000	6	2,416,116	7	610,200
Mechanical Engineering	4	187,160	43	4,318,816	55	4,055,320
<b>Total:</b>	<b>20</b>	<b>1,352,430</b>	<b>185</b>	<b>26,284,151</b>	<b>219</b>	<b>27,020,109</b>
<b>English Program for Internationals</b>						
English Program for Internationals	0	0	0	0	1	146,233
<b>Total:</b>	<b>0</b>	<b>0</b>	<b>0</b>	<b>0</b>	<b>1</b>	<b>146,233</b>
<b>Enrollment Management</b>						
Student Financial Aid & Scholarships	0	0	0	0	1	38,335
<b>Total:</b>	<b>0</b>	<b>0</b>	<b>0</b>	<b>0</b>	<b>1</b>	<b>38,335</b>
<b>Environment, School of the</b>						
Earth Sciences & Resources Institute	1	214,604	10	1,718,624	5	1,209,622
Environment, School of the	0	0	12	951,330	4	652,046
<b>Total:</b>	<b>1</b>	<b>214,604</b>	<b>22</b>	<b>2,669,954</b>	<b>9</b>	<b>1,861,668</b>
<b>Honors College, South Carolina</b>						
Honors College, South Carolina	0	0	0	0	2	12,654
<b>Total:</b>	<b>0</b>	<b>0</b>	<b>0</b>	<b>0</b>	<b>2</b>	<b>12,654</b>

## Proposals by Department

<u>CAMPUS</u>	CURRENT MONTH April FY2005		YEAR TO DATE FY 2004 (July-April)		YEAR TO DATE FY 2005 (July-April)	
<b>Hospitality, Retail &amp; Sport Management, College of</b>						
Hospitality, Retail & Sport Management, College of	0	0	1	151,434	0	0
Hotel, Restaurant & Tourism Management	0	0	1	400,000	0	0
Retailing, Department of	0	0	2	27,500	3	48,984
Sport & Entertainment Management	0	0	1	13,500	0	0
Technology Support & Training Management	0	0	0	0	1	70,500
<b>Total:</b>	<b>0</b>	<b>0</b>	<b>5</b>	<b>592,434</b>	<b>4</b>	<b>119,484</b>
<b>Law Enforcement &amp; Safety</b>						
Law Enforcement & Safety	0	0	1	44,834	2	103,045
<b>Total:</b>	<b>0</b>	<b>0</b>	<b>1</b>	<b>44,834</b>	<b>2</b>	<b>103,045</b>
<b>Law, School of</b>						
Law, School of	0	0	14	1,376,674	8	1,207,370
<b>Total:</b>	<b>0</b>	<b>0</b>	<b>14</b>	<b>1,376,674</b>	<b>8</b>	<b>1,207,370</b>
<b>Mass Communications &amp; Information Studies, College</b>						
Journalism & Mass Communications, School of	0	0	8	537,978	9	234,968
Library & Information Sciences, School of	1	50,000	5	67,594	5	552,092
Mass Communications & Information Studies, College of	2	320,257	0	0	6	652,927
<b>Total:</b>	<b>3</b>	<b>370,257</b>	<b>13</b>	<b>605,572</b>	<b>20</b>	<b>1,439,987</b>
<b>Medicine, School of</b>						
Cancer Center, South Carolina	0	0	0	0	1	5,000,000
Cell & Developmental Biology & Anatomy	4	260,941	16	2,467,616	22	2,929,657
Cell Biology & Neurosciences	0	0	3	730,588	3	868,131
Family & Preventive Medicine	2	241,899	8	1,199,128	11	1,897,921
Internal Medicine	0	0	15	3,036,126	13	3,063,260
Medicine, School of - (Dean)	0	0	3	338,500	1	240,000
Microbiology & Immunology	0	0	7	1,775,485	0	0
Neuropsychiatry	3	398,731	5	778,701	11	1,420,158
Obstetrics & Gynecology	0	0	3	222,558	7	306,086
Ophthalmology	1	648,542	1	564,655	2	748,542
Orthopaedic Surgery	1	16,000	0	0	2	75,498
Pathology & Microbiology	1	178,000	6	884,178	18	1,939,310
Pediatrics	0	0	14	1,414,812	16	2,388,609
Pharmacology, Physiology & Neuroscience	4	1,069,194	20	4,022,511	23	3,811,390
Radiology	0	0	3	248,641	0	0
Research & Special Projects	2	90,000	0	0	6	259,000
Surgery	0	0	2	16,000	5	879,404
<b>Total:</b>	<b>18</b>	<b>2,903,307</b>	<b>106</b>	<b>17,699,499</b>	<b>141</b>	<b>25,826,966</b>

## Proposals by Department

<u>CAMPUS</u>	CURRENT MONTH April FY2005		YEAR TO DATE FY 2004 (July-April)		YEAR TO DATE FY 2005 (July-April)	
<b>Music, School of</b> Music, School of	0	0	2	53,755	1	10,000
<b>Total:</b>	<b>0</b>	<b>0</b>	<b>2</b>	<b>53,755</b>	<b>1</b>	<b>10,000</b>
<b>Nursing, College of</b> Nursing	2	427,327	10	3,749,309	15	4,182,434
<b>Total:</b>	<b>2</b>	<b>427,327</b>	<b>10</b>	<b>3,749,309</b>	<b>15</b>	<b>4,182,434</b>
<b>Pharmacy, College of</b> Basic Pharmaceutical Sciences	1	6,580	8	1,176,543	9	1,163,320
Palmetto Poison Center	1	125,000	0	0	1	125,000
Pharmaceutical & Health Outcomes Sciences	0	0	0	0	1	37,000
Pharmacy - (General)	0	0	10	1,210,502	3	307,752
Pharmacy Practice	0	0	1	19,522	2	115,500
<b>Total:</b>	<b>2</b>	<b>131,580</b>	<b>19</b>	<b>2,406,567</b>	<b>16</b>	<b>1,748,572</b>
<b>Provost, Office of the</b> TRIO Programs	0	0	3	1,066,853	3	1,007,139
<b>Total:</b>	<b>0</b>	<b>0</b>	<b>3</b>	<b>1,066,853</b>	<b>3</b>	<b>1,007,139</b>
<b>Public Health, Arnold School of</b> Communication Sciences & Disorders	0	0	11	1,012,341	4	282,900
Environmental Health Sciences	1	291,091	28	4,396,148	14	2,200,901
Epidemiology & Biostatistics	3	216,190	49	5,971,886	34	5,896,123
Exercise Science	2	13,500	29	4,425,618	18	1,503,111
Health Promotion, Education & Behavior	6	3,926,818	36	2,585,711	32	9,494,162
Health Services & Policy Research, Center for	3	139,719	9	318,991	12	634,519
Health Services Policy and Management	1	31,738	26	1,252,009	44	1,697,678
Prevention Research Center	1	172,290	5	703,748	10	1,705,896
Public Health, Arnold School of - Dean	0	0	7	7,501,145	2	145,416
Public Health, Arnold School of - General	0	0	0	0	1	67,992
Research & Nutrition & Health Disparities, Center for	1	49,965	0	0	4	116,395
<b>Total:</b>	<b>18</b>	<b>4,841,311</b>	<b>200</b>	<b>28,167,597</b>	<b>175</b>	<b>23,745,093</b>
<b>Research &amp; Health Sciences, Vice President</b> Research, Vice President for - (General)	1	1,552,563	0	0	1	1,552,563
Sponsored Awards Management	0	0	1	100,000	0	0
<b>Total:</b>	<b>1</b>	<b>1,552,563</b>	<b>1</b>	<b>100,000</b>	<b>1</b>	<b>1,552,563</b>
<b>Senior and Regional Campuses</b> Regional Campuses & Continuing Education	0	0	2	299,260	3	668,991
USC Aiken	1	126,491	21	966,574	21	1,153,723
USC Beaufort	0	0	15	770,017	7	777,474
USC Lancaster	2	238,214	2	287,196	7	977,595

## Proposals by Department

<u>CAMPUS</u>	CURRENT MONTH April FY2005		YEAR TO DATE FY 2004 (July-April)		YEAR TO DATE FY 2005 (July-April)	
USC Salkehatchie	0	0	10	636,201	7	557,066
USC Sumter	0	0	1	3,500	2	300,761
USC Union	0	0	1	222,948	1	234,229
USC Upstate	0	0	41	5,105,560	19	2,614,925
<b>Total:</b>	<b>3</b>	<b>364,705</b>	<b>93</b>	<b>8,291,256</b>	<b>67</b>	<b>7,284,764</b>
<b>Social Work, College of</b>						
Families in Society, Institute for	0	0	16	3,259,007	10	535,759
Social Work, College of	3	77,230	59	7,558,028	33	6,807,842
<b>Total:</b>	<b>3</b>	<b>77,230</b>	<b>75</b>	<b>10,817,035</b>	<b>43</b>	<b>7,343,601</b>
<b>Student Affairs, Division of</b>						
International Programs for Students	0	0	1	4,916	0	0
Student Health	0	0	5	36,900	1	125,198
Student Life	0	0	2	34,990	3	4,990,000
<b>Total:</b>	<b>0</b>	<b>0</b>	<b>8</b>	<b>76,806</b>	<b>4</b>	<b>5,115,198</b>
<b>University 101</b>						
University 101	0	0	0	0	1	94,691
<b>Total:</b>	<b>0</b>	<b>0</b>	<b>0</b>	<b>0</b>	<b>1</b>	<b>94,691</b>
<b>University Libraries</b>						
Libraries & Collections	0	0	0	0	1	69,433
South Caroliniana Library	0	0	0	0	1	69,837
Thomas Cooper Library	1	7,893,146	2	226,980	3	8,095,986
<b>Total:</b>	<b>1</b>	<b>7,893,146</b>	<b>2</b>	<b>226,980</b>	<b>5</b>	<b>8,235,256</b>
<b>Report Total:</b>	<b>118</b>	<b>27,046,534</b>	<b>1260</b>	<b>188,934,233</b>	<b>1224</b>	<b>199,680,277</b>