



MEMORANDUM

To: William C. Harris, Ph.D.
 Executive Director

From: Anthony M. Boccanfuso, Ph.D.
 Managing Director

RE: Report of Sponsored Program Activity for April 2002

Date: May 14, 2002

The University received awards totaling \$5.6 million during the month, a 40.2% decrease from last April (\$9.3 million). **Thus far in the fiscal year, award dollars are 15.5% behind last year, \$101.3 million vs. \$85.6 million.**

Faculty submitted 107 proposals requesting \$15.4 million during April. Thus far in the fiscal year, SPAR has processed 1241 proposals requesting \$139.5 million, compared to last year's totals of 1225 and \$148.0 million.

	April FY02	YTD FY01	YTD FY02	YTD Change
Award Dollars	\$5,579,209	\$101,299,373	\$85,642,023	(-15.46%)
Research Expenditures	4,075,163	-	44,135,381	-
Proposals Submitted	107	1225	1241	1.31
Proposal Dollars Requested	\$15,415,495	\$148,018,586	\$139,523,609	(-5.74)

HIGHLIGHTS

	<u>YTD 01</u>	<u>YTD 02</u>
School of Public Health	11,386,378	16,806,153
College of Engineering	22,639,899	10,328,491
College of Liberal Arts	7,459,178	6,361,212
College of Science & Math	15,336,326	13,584,644

cc: K. McCoy
 R. Steven Etheredge
 J. Odom

Sponsored Programs and Research Monthly Report

SUMMARY OF AWARDS APRIL - 2002

By Purpose

Research Awards - SPAR	\$2,176,629
Research Awards - USCRF	\$1,965,794
Training Awards	\$237,330
Service Awards	\$1,192,441
Equipment Awards	\$0
Graduate Assistantship Awards	\$7,015
TOTAL:	\$5,579,209

By Source

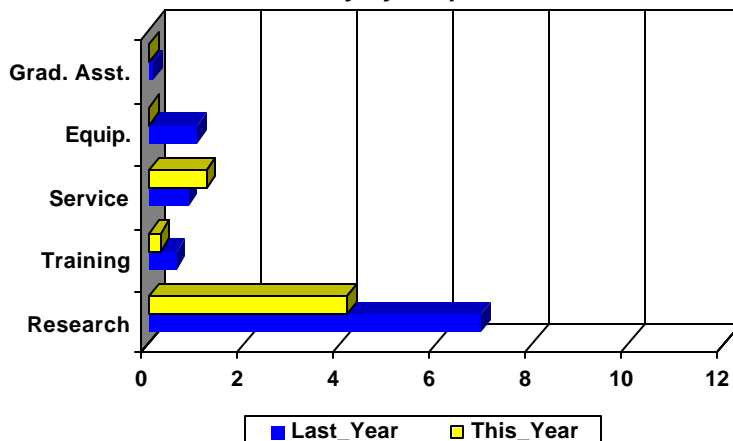
Federal Awards - SPAR	\$2,242,479
Federal Awards - USCRF	\$2,028,092
Private Awards - SPAR	\$567,341
Private Awards - USCRF	\$543,108
State Awards	\$198,189
TOTAL:	\$5,579,209

COMPARISON OF AMOUNT RECEIVED

APRIL - 2002 vs. APRIL - 2001

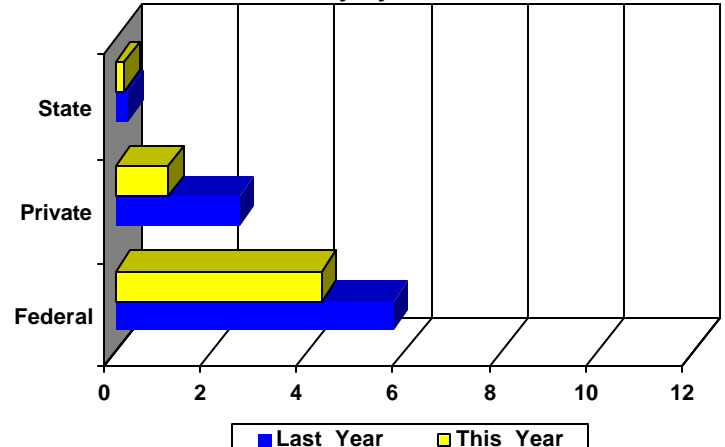
Amounts Received
(In millions of dollars)

Summary by Purpose



Amounts Received
(In millions of dollars)

Summary by Source



AWARDS BY DEPARTMENT

DEPARTMENT	CURRENT MONTH APRIL - 2002		YEAR TO DATE FY 2002		YEAR TO DATE FY 2001	
Business and Finance						
Campus Services	0	\$0	0	\$0	2	\$12,000
Recycling & Waste Management	0	\$0	1	\$9,970	0	\$0
Total :	0	\$0	1	\$9,970	2	\$12,000
College of Criminal Justice						
	1	\$47,796	2	\$80,392	9	\$834,428
Total :	1	\$47,796	2	\$80,392	9	\$834,428
College of Education						
Education	0	\$0	2	\$35,760	2	\$16,054
Education Leadership & Policies	0	\$0	5	\$211,929	13	\$567,353
Educational Psychology	2	\$56,858	14	\$505,429	7	\$484,566
Instruction & Teacher Education	0	\$0	20	\$2,502,917	20	\$2,243,422
Office of Research	0	\$0	0	\$0	1	\$14,295
Physical Education	1	\$300,000	7	\$360,000	2	\$422,200
SC Educational Policy Center	0	\$0	1	\$15,500	5	\$352,869
School Improvement Council Assistance	0	\$0	3	\$159,805	1	\$128,805
USC Children's Center	0	\$0	0	\$0	1	\$2,000
Total :	3	\$356,858	52	\$3,791,340	52	\$4,231,564
College of Engineering & Information						
Chemical Engineering	3	\$408,584	32	\$2,945,680	39	\$2,954,160
Civil & Environmental Engineering	1	\$18,000	14	\$1,259,239	17	\$1,730,990
Computer Science & Engineering	2	\$77,124	13	\$184,376	24	\$355,157
Electrical Engineering	2	\$150,000	10	\$2,459,441	16	\$12,711,987
Engineering & Information Technology, College of	0	\$0	4	\$1,662,495	3	\$273,862
Mechanical Engineering	1	\$239,305	24	\$1,374,588	32	\$3,711,543
SCAMP	0	\$0	6	\$442,672	4	\$902,200
Total :	9	\$893,013	103	\$10,328,491	135	\$22,639,899
College of Hospitality, Retail & Sports						
Center For Retailing Studies	0	\$0	2	\$36,429	0	\$0
Hospitality, Retail & Sports Mgmt - Dean's Office	0	\$0	1	\$62,500	4	\$125,500
Hotel, Restaurant & Tourism Administration	0	\$0	0	\$0	1	\$9,600
Sport Administration	0	\$0	1	\$14,000	1	\$13,000
Total :	0	\$0	4	\$112,929	6	\$148,100
College of Journalism & Mass						
	0	\$0	10	\$207,699	21	\$546,564
Total :	0	\$0	10	\$207,699	21	\$546,564
College of Liberal Arts						
African-American Studies Program	0	\$0	0	\$0	1	\$1,000
Anthropology	0	\$0	0	\$0	2	\$19,314
Archaeology & Anthropology, Institute of	3	\$253,144	13	\$1,586,613	10	\$1,192,113
Art	0	\$0	1	\$3,000	2	\$79,916
Comparative Literature	1	\$1,200	1	\$1,200	0	\$0
English	0	\$0	3	\$60,075	4	\$16,485
French & Classics	0	\$0	1	\$7,533	0	\$0

DEPARTMENT	CURRENT MONTH APRIL - 2002		YEAR TO DATE FY 2002		YEAR TO DATE FY 2001	
Geography	0	\$0	17	\$742,473	19	\$907,295
Government & International Studies	1	\$7,500	8	\$157,194	12	\$137,767
History	0	\$0	22	\$56,826	24	\$134,613
Institute for Southern Studies	1	\$22,150	3	\$75,274	4	\$392,111
International Studies, Institute of	2	\$252,767	2	\$252,767	2	\$128,997
Liberal Arts Dean's Office	0	\$0	1	\$6,000	0	\$0
McKissick Museum	0	\$0	4	\$20,070	4	\$75,359
Naval Science	0	\$0	2	\$4,000	4	\$6,100
Philosophy	0	\$0	2	\$29,644	4	\$49,159
Psychology	0	\$0	20	\$1,319,148	37	\$1,845,500
Public Service & Policy Research, Institute for	2	\$66,139	18	\$720,215	36	\$1,180,811
Religious Studies	0	\$0	1	\$50,000	1	\$35,000
Sociology	0	\$0	1	\$6,018	5	\$181,995
Theatre, Speech & Dance	0	\$0	0	\$0	1	\$6,170
Trio Programs	0	\$0	6	\$1,263,162	5	\$1,069,473
Total :	10	\$602,900	126	\$6,361,212	177	\$7,459,178
College of Library & Information Science	0	\$0	4	\$53,565	6	\$54,329
Total :	0	\$0	4	\$53,565	6	\$54,329
College of Nursing						
Academic & Student Affairs	0	\$0	13	\$852,455	10	\$798,994
Administrative & Clinical Nursing	0	\$0	1	\$86,003	4	\$241,644
Family & Community Health Nursing	0	\$0	2	\$36,917	6	\$325,100
Total :	0	\$0	16	\$975,375	20	\$1,365,738
College of Pharmacy						
Basic Pharmaceutical Sciences	1	\$108,000	6	\$754,249	8	\$633,304
Palmetto Poison Center	0	\$0	3	\$291,131	3	\$85,000
Pharmacy & Health Outcomes Sci.	0	\$0	5	\$96,611	10	\$282,666
Pharmacy Practice	0	\$0	3	\$136,085	5	\$125,000
Total :	1	\$108,000	17	\$1,278,076	26	\$1,125,970
College of Science and Math						
Baruch Institute	2	\$107,874	20	\$1,870,767	20	\$1,549,641
Biological Research & Technology, Institute for	0	\$0	2	\$3,300	0	\$0
Biological Sciences	9	\$661,430	41	\$3,835,425	40	\$2,784,553
Center For Science Education	0	\$0	1	\$12,400	3	\$104,695
Chemistry & Biochemistry	4	\$103,324	39	\$3,146,498	62	\$4,714,893
Computer Science (moved to Engineering)	0	\$0	0	\$0	1	\$19,266
EPSCoR (moved to VP for Research)	0	\$0	0	\$0	5	\$211,885
Geological Sciences	5	\$170,078	50	\$2,292,453	30	\$1,607,887
Mathematics	0	\$0	3	\$201,669	11	\$733,307
Physics & Astronomy	1	\$7,200	9	\$1,218,784	22	\$2,020,891
Science & Math Administration	0	\$0	6	\$743,043	7	\$1,019,928
Statistics	1	\$12,704	11	\$260,305	18	\$569,380
Total :	22	\$1,062,610	182	\$13,584,644	219	\$15,336,326
College of Social Work	1	\$5,015	51	\$5,284,917	60	\$6,008,674
Total :	1	\$5,015	51	\$5,284,917	60	\$6,008,674

DEPARTMENT	CURRENT MONTH APRIL - 2002		YEAR TO DATE FY 2002		YEAR TO DATE FY 2001	
Division of Student Affairs						
International Programs for Students	0	\$0	0	\$0	1	\$3,000
Student Health	0	\$0	3	\$313,265	1	\$4,951
Student Life	0	\$0	4	\$158,199	2	\$211,571
Total :	0	\$0	7	\$471,464	4	\$219,522
English Program for Internationals						
English Program For Internationals	0	\$0	1	\$265,492	1	\$272,096
Total :	0	\$0	1	\$265,492	1	\$272,096
Enrollment Management						
	0	\$0	1	\$33,047	0	\$0
Total :	0	\$0	1	\$33,047	0	\$0
Institute for Families in Society						
Families in Society, Institute for	3	\$274,217	22	\$2,169,683	22	\$2,245,289
Total :	3	\$274,217	22	\$2,169,683	22	\$2,245,289
Institutional Planning						
Law School						
Law School	0	\$0	12	\$1,089,557	11	\$1,188,878
Total :	0	\$0	12	\$1,089,557	11	\$1,188,878
Moore School of Business						
Business Administration - Division Of Research	1	\$31,253	62	\$1,121,662	54	\$1,159,194
Small Business Development Center	0	\$0	11	\$1,627,095	13	\$1,108,245
Total :	1	\$31,253	73	\$2,748,757	67	\$2,267,439
Norman J. Arnold School of Public Health						
Center for Health Services & Policy Research	0	\$0	9	\$830,938	0	\$0
Communication Sciences & Disorders	1	\$72,417	2	\$80,334	1	\$25,000
Environmental Health Sciences	1	\$41,175	47	\$1,901,086	29	\$1,615,435
Epidemiology & Biostatistics	4	\$232,136	34	\$3,741,480	29	\$2,808,432
Exercise Science	0	\$0	13	\$1,582,713	15	\$1,807,808
Health Administration	0	\$0	21	\$739,897	35	\$700,169
Health Promotion & Education	1	\$20,000	35	\$1,087,762	36	\$1,334,896
Norman J. Arnold School of Public Health - Dean	0	\$0	4	\$3,474,760	2	\$492,197
Prevention Research Center	2	\$110,000	24	\$3,367,183	25	\$2,602,441
Total :	9	\$475,728	189	\$16,806,153	172	\$11,386,378
Regional and Four-Year Campuses						
Regional Campuses & Continuing Education	0	\$0	0	\$0	1	\$32,100
USC Aiken	0	\$0	20	\$974,521	25	\$1,542,314
USC Beaufort	4	\$41,500	16	\$335,697	11	\$542,987
USC Lancaster	0	\$0	4	\$260,153	6	\$456,882
USC Salkehatchie	1	\$28,000	5	\$540,747	4	\$462,764
USC Spartanburg	5	\$17,572	63	\$1,923,566	46	\$1,593,060
USC Sumter	0	\$0	5	\$253,208	7	\$403,896
USC Union	0	\$0	2	\$229,471	1	\$198,582

DEPARTMENT	CURRENT MONTH APRIL - 2002		YEAR TO DATE FY 2002		YEAR TO DATE FY 2001	
Total :	10	\$87,072	115	\$4,517,363	101	\$5,232,585
School of Medicine						
Basic Science Research	0	\$0	1	\$209,244	0	\$0
Biochemistry *	2	\$24,234	21	\$2,308,806	20	\$1,642,983
Cell Biology & Neurosciences	0	\$0	5	\$375,368	5	\$678,090
Developmental Biology & Anatomy	2	\$498,234	15	\$1,489,394	10	\$1,063,060
Family & Preventive Medicine	2	\$102,000	9	\$649,273	5	\$849,326
Health & Safety	0	\$0	1	\$9,600	1	\$10,000
Internal Medicine	1	\$345	41	\$2,926,209	34	\$1,939,840
Medicine Library	0	\$0	2	\$137,048	0	\$0
Microbiology & Immunology	1	\$23,263	6	\$544,279	6	\$692,421
Neuropsychiatry	0	\$0	9	\$189,489	9	\$387,765
Obstetrics & Gynecology	1	\$59,000	1	\$59,000	2	\$70,525
Ophthalmology	0	\$0	1	\$10,000	0	\$0
Orthopaedic Surgery	0	\$0	0	\$0	2	\$7,250
Pathology	0	\$0	3	\$252,197	4	\$244,554
Pediatrics/Center for Developmental Disabilities	0	\$0	17	\$1,832,520	30	\$3,183,834
Pharmacology & Physiology	0	\$0	2	\$81,500	8	\$214,221
Radiology	0	\$0	1	\$401,974	1	\$400,313
Research & Special Projects	5	\$313,692	19	\$683,690	7	\$670,802
School of Medicine Graduate Program	0	\$0	0	\$0	2	\$35,360
South Carolina Cancer Center	0	\$0	6	\$151,014	2	\$11,711
Surgery	3	\$353,088	13	\$585,516	1	\$7,500
Total :	17	\$1,373,856	173	\$12,896,121	149	\$12,109,555
School of Music	1	\$35,937	1	\$35,937	1	\$38,914
Total :	1	\$35,937	1	\$35,937	1	\$38,914
School of the Environment						
Earth Sciences & Resources Institute	1	\$174,988	5	\$851,262	7	\$3,211,459
School of the Environment	1	\$9,000	10	\$606,733	5	\$656,301
Total :	2	\$183,988	15	\$1,457,995	12	\$3,867,760
South Carolina Honors College	0	\$0	1	\$102,676	1	\$6,000
Total :	0	\$0	1	\$102,676	1	\$6,000
University Libraries						
Libraries & Collections	0	\$0	0	\$0	1	\$1,666
Thomas Cooper Library	0	\$0	5	\$1,133,532	2	\$260,297
Total :	0	\$0	5	\$1,133,532	3	\$261,963
Vice President for Research						
EPSCoR	0	\$0	0	\$0	46	\$2,834,258
NanoCenter	1	\$65,200	8	\$1,705,429	0	\$0
Sponsored Programs & Research	0	\$0	1	\$17,671	1	\$20,000
Vice President for Research	0	\$0	0	\$0	1	\$1,534,800
Vice President for Research - General	0	\$0	3	\$431,342	0	\$0
Total :	1	\$65,200	12	\$2,154,442	48	\$4,389,058

DEPARTMENT	CURRENT MONTH APRIL - 2002		YEAR TO DATE FY 2002		YEAR TO DATE FY 2001	
Report TOTAL :	89	\$5,579,209	1174	\$85,642,023	1305	\$101,299,373

* - Biochemistry represents faculty with a dual appointment to the Department of Chemistry and the School of Medicine. The figures are included in both division totals but only once in the overall total.

Funding Agency Comparison Report

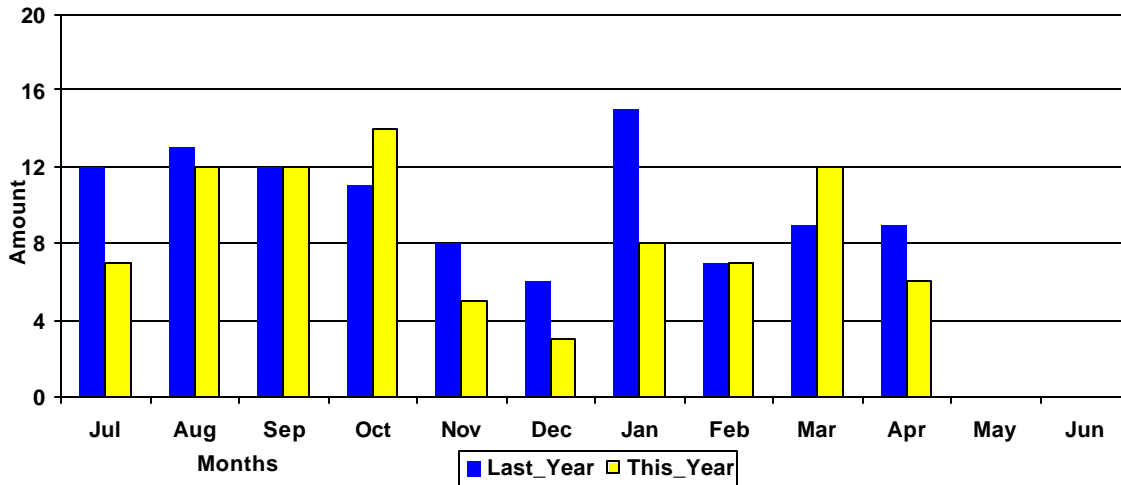
Year-To-Date -APRIL - 2002

FISCAL YEAR - 2002

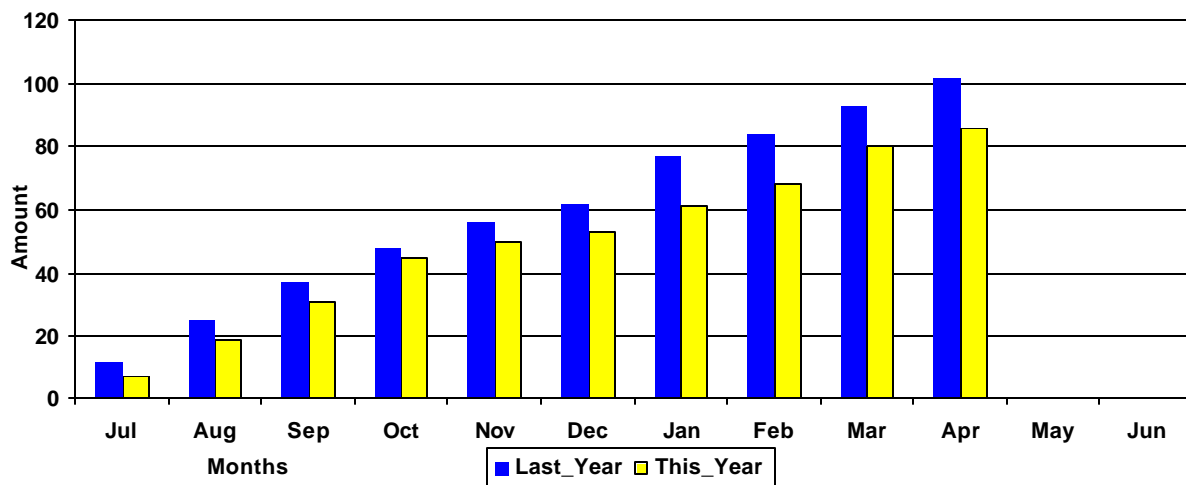
FISCAL YEAR - 2001

NSF Awards	76	\$6,126,072	86	\$6,758,062
NIH Awards	102	\$9,962,357	107	\$10,438,158
Dept. Of Defense Awards	42	\$3,759,044	66	\$19,682,710
Dept. Of Education Awards	68	\$7,571,685	61	\$8,742,982
Dept. Of Energy Awards	30	\$5,451,765	45	\$4,558,567
SCUREF Awards from DOE	8	\$1,093,678	10	\$1,199,250
State and Municipalities Awards	146	\$6,945,270	232	\$11,633,459

Amounts Awarded
(In millions of dollars)



Cumulative Amounts Awarded
(In millions of dollars)



PROPOSALS BY DEPARTMENT

DEPARTMENT	CURRENT MONTH APRIL - 2002		YEAR TO DATE FY 2002		YEAR TO DATE FY 2001	
Business and Finance						
Campus Services	0	\$0	1	\$7,497	2	\$11,970
Facilities Planning/Energy Services	0	\$0	0	\$0	1	\$5,375
Recycling & Waste Management	1	\$10,000	1	\$10,000	0	\$0
Total :	1	\$10,000	2	\$17,497	3	\$17,345
College of Criminal Justice						
	0	\$0	5	\$237,263	8	\$411,951
Total :	0	\$0	5	\$237,263	8	\$411,951
College of Education						
Education	0	\$0	4	\$288,984	1	\$27,500
Education Leadership & Policies	0	\$0	7	\$290,331	9	\$155,789
Educational Psychology	2	\$316,989	19	\$1,368,115	11	\$883,341
Instruction & Teacher Education	0	\$0	8	\$331,874	17	\$3,500,687
Physical Education	1	\$1,057,110	6	\$1,114,110	3	\$1,292,785
SC Educational Policy Center	0	\$0	2	\$16,500	2	\$92,816
School Improvement Council Assistance	0	\$0	1	\$25,250	0	\$0
USC Children's Center	0	\$0	0	\$0	2	\$32,000
Total :	3	\$1,374,099	47	\$3,435,164	45	\$5,984,918
College of Engineering & Information						
Chemical Engineering	7	\$604,236	37	\$2,907,945	44	\$9,323,858
Civil & Environmental Engineering	0	\$0	14	\$1,194,647	16	\$1,033,492
Computer Science & Engineering	1	\$104,970	31	\$3,164,533	30	\$1,786,290
Electrical Engineering	3	\$543,916	19	\$7,767,929	11	\$6,427,402
Engineering & Information Technology, College of	0	\$0	4	\$353,336	2	\$225,000
Mechanical Engineering	3	\$197,668	32	\$4,888,509	42	\$4,419,629
SCAMP	0	\$0	3	\$1,422,672	2	\$812,000
Total :	14	\$1,450,790	140	\$21,699,571	147	\$24,027,671
College of Hospitality, Retail & Sports						
Center For Retailing Studies	0	\$0	3	\$26,750	0	\$0
Hospitality, Retail & Sports Mgmt - Dean's Office	0	\$0	1	\$25,000	1	\$25,000
Hotel, Restaurant & Tourism Administration	0	\$0	1	\$25,000	1	\$9,600
Sport Administration	0	\$0	1	\$14,000	1	\$13,000
Total :	0	\$0	6	\$90,750	3	\$47,600
College of Journalism & Mass						
	0	\$0	8	\$207,091	21	\$824,258
Total :	0	\$0	8	\$207,091	21	\$824,258
College of Liberal Arts						
African-American Studies Program	0	\$0	0	\$0	1	\$1,000
Anthropology	0	\$0	1	\$18,525	1	\$72,250
Archaeology & Anthropology, Institute of	1	\$10,030	11	\$1,211,472	12	\$1,399,567
Art	2	\$58,854	4	\$88,954	2	\$151,916
Comparative Literature	1	\$1,200	1	\$1,200	0	\$0
English	0	\$0	4	\$96,790	5	\$80,095
French & Classics	0	\$0	1	\$7,533	0	\$0

DEPARTMENT	CURRENT MONTH APRIL - 2002		YEAR TO DATE FY 2002		YEAR TO DATE FY 2001	
Geography	2	\$28,479	16	\$757,396	11	\$592,848
Government & International Studies	0	\$0	10	\$306,654	7	\$208,167
History	0	\$0	14	\$186,206	15	\$214,956
Institute for Southern Studies	0	\$0	2	\$249,388	1	\$262,040
International Studies, Institute of	2	\$350,692	5	\$758,524	1	\$37,946
Linguistics Program	0	\$0	0	\$0	2	\$41,892
McKissick Museum	0	\$0	6	\$140,020	5	\$127,255
Philosophy	0	\$0	1	\$10,000	2	\$19,829
Psychology	3	\$198,217	24	\$2,955,254	38	\$9,061,192
Public Service & Policy Research, Institute for	2	\$54,332	21	\$2,958,551	36	\$2,216,086
Religious Studies	0	\$0	1	\$50,000	1	\$35,000
Sociology	0	\$0	5	\$374,712	7	\$242,003
Spanish, Italian, & Portuguese	0	\$0	0	\$0	1	\$49,941
Theatre, Speech & Dance	0	\$0	0	\$0	1	\$6,170
Trio Programs	0	\$0	4	\$757,790	2	\$367,697
Total :	13	\$701,804	131	\$10,928,969	151	\$15,187,850
College of Library & Information Science	0	\$0	5	\$90,219	6	\$141,136
Total :	0	\$0	5	\$90,219	6	\$141,136
College of Nursing						
Academic & Student Affairs	0	\$0	5	\$2,411,287	6	\$479,600
Administrative & Clinical Nursing	0	\$0	4	\$1,071,455	5	\$163,000
Family & Community Health Nursing	0	\$0	6	\$756,182	5	\$2,484,555
Total :	0	\$0	15	\$4,238,924	16	\$3,127,155
College of Pharmacy						
Basic Pharmaceutical Sciences	1	\$164,150	14	\$1,871,935	18	\$1,948,103
Palmetto Poison Center	0	\$0	1	\$5,250	2	\$133,957
Pharmacy & Health Outcomes Sci.	1	\$14,500	3	\$75,000	10	\$402,781
Pharmacy Practice	1	\$10,000	4	\$146,085	4	\$136,428
Total :	3	\$188,650	22	\$2,098,270	34	\$2,621,269
College of Science and Math						
Baruch Institute	5	\$961,501	34	\$5,623,677	27	\$2,112,029
Biological Sciences	2	\$29,142	59	\$8,398,980	66	\$7,537,803
Center For Science Education	0	\$0	4	\$325,041	4	\$132,986
Chemistry & Biochemistry	7	\$929,794	57	\$8,867,248	74	\$12,293,934
EPSCoR (moved to VP for Research)	0	\$0	0	\$0	1	\$40,000
Geological Sciences	4	\$377,766	50	\$5,461,138	45	\$5,542,544
Mathematics	1	\$150,000	14	\$728,903	14	\$948,775
Physics & Astronomy	4	\$212,774	27	\$4,227,891	27	\$8,073,605
Science & Math Administration	0	\$0	3	\$2,210,461	8	\$1,574,443
Statistics	1	\$85,799	12	\$328,372	15	\$520,191
Total :	24	\$2,746,776	260	\$36,171,711	281	\$38,776,310
College of Social Work	4	\$188,162	51	\$1,755,019	59	\$7,898,151
Total :	4	\$188,162	51	\$1,755,019	59	\$7,898,151
Division of Student Affairs						
Housing & Residential Services	0	\$0	1	\$25,000	0	\$0

DEPARTMENT	CURRENT MONTH APRIL - 2002		YEAR TO DATE FY 2002		YEAR TO DATE FY 2001	
Student Health	1	\$3,960	2	\$17,491	4	\$606,435
Student Life	0	\$0	3	\$66,411	2	\$153,362
Total :	1	\$3,960	6	\$108,902	6	\$759,797
English Program for Internationals						
English Program For Internationals	0	\$0	1	\$265,492	1	\$232,149
Total :	0	\$0	1	\$265,492	1	\$232,149
Institute for Families in Society						
Families in Society, Institute for	2	\$70,490	19	\$1,820,571	19	\$3,239,937
Total :	2	\$70,490	19	\$1,820,571	19	\$3,239,937
Institutional Planning						
Law Enforcement & Safety						
	0	\$0	1	\$21,600	2	\$67,528
Total :	0	\$0	1	\$21,600	2	\$67,528
Law School						
Law School	1	\$250,000	14	\$1,984,676	11	\$1,332,522
Total :	1	\$250,000	14	\$1,984,676	11	\$1,332,522
Moore School of Business						
Business Administration - Division Of Research	0	\$0	49	\$863,392	48	\$834,697
Small Business Development Center	2	\$156,828	7	\$2,588,813	4	\$2,537,838
Total :	2	\$156,828	56	\$3,452,205	52	\$3,372,535
Norman J. Arnold School of Public Health						
Center for Health Services & Policy Research	1	\$22,984	6	\$542,433	0	\$0
Communication Sciences & Disorders	1	\$72,250	3	\$152,667	1	\$199,011
Environmental Health Sciences	1	\$10,646	23	\$2,454,231	20	\$1,709,695
Epidemiology & Biostatistics	2	\$157,868	27	\$2,533,971	34	\$5,976,958
Exercise Science	1	\$190,484	28	\$1,833,502	16	\$1,130,198
Health Administration	0	\$0	19	\$318,248	34	\$227,204
Health Promotion & Education	2	\$261,192	35	\$1,845,298	33	\$1,691,730
Norman J. Arnold School of Public Health - Dean	0	\$0	0	\$0	2	\$1,338,100
Prevention Research Center	8	\$2,230,951	16	\$3,480,510	11	\$912,408
Total :	16	\$2,946,375	157	\$13,160,860	151	\$13,185,304
Regional and Four-Year Campuses						
USC Aiken	1	\$29,977	23	\$1,961,596	19	\$1,761,604
USC Beaufort	1	\$1,140,975	15	\$1,748,105	12	\$969,182
USC Lancaster	0	\$0	3	\$317,360	3	\$370,165
USC Salkehatchie	0	\$0	4	\$355,543	6	\$480,668
USC Spartanburg	1	\$251,065	37	\$2,356,966	28	\$1,600,305
USC Sumter	0	\$0	2	\$192,079	6	\$962,900
USC Union	0	\$0	0	\$0	1	\$299,376
Total :	3	\$1,422,017	84	\$6,931,649	75	\$6,444,200
School of Medicine						

DEPARTMENT	CURRENT MONTH APRIL - 2002		YEAR TO DATE FY 2002		YEAR TO DATE FY 2001	
Animal Resources Facility	0	\$0	0	\$0	1	\$128,159
Biochemistry *	3	\$2,366,630	20	\$5,593,858	7	\$1,453,880
Cell Biology & Neurosciences	3	\$594,129	4	\$702,129	5	\$749,684
Developmental Biology & Anatomy	2	\$352,875	14	\$1,958,032	18	\$2,479,255
Family & Preventive Medicine	1	\$2,000	9	\$1,397,436	7	\$871,363
Health & Safety	0	\$0	0	\$0	1	\$10,000
Internal Medicine	1	\$178,750	15	\$710,791	6	\$907,244
Medicine Library	0	\$0	1	\$3,801	1	\$4,850
Microbiology & Immunology	0	\$0	8	\$1,674,791	5	\$889,137
Neuropsychiatry	0	\$0	12	\$1,106,008	7	\$859,340
Obstetrics & Gynecology	0	\$0	1	\$59,000	2	\$137,000
Ophthalmology	0	\$0	1	\$35,000	0	\$0
Pathology	0	\$0	11	\$1,582,579	9	\$1,416,259
Pediatrics/Center for Developmental Disabilities	1	\$382,888	22	\$2,796,565	12	\$886,096
Pharmacology & Physiology	1	\$30,000	20	\$1,514,198	16	\$1,412,956
Radiology	0	\$0	0	\$0	1	\$400,313
Research & Special Projects	3	\$50,000	9	\$210,375	1	\$20,000
School of Medicine - Dean's Office	0	\$0	1	\$27,493	0	\$0
School of Medicine Graduate Program	0	\$0	1	\$17,680	2	\$17,680
South Carolina Cancer Center	0	\$0	3	\$105,968	2	\$11,711
Surgery	1	\$41,400	8	\$837,423	3	\$196,640
Total :	16	\$3,998,672	160	\$20,333,127	106	\$12,851,567
School of Music	1	\$35,937	2	\$175,540	1	\$41,564
Total :	1	\$35,937	2	\$175,540	1	\$41,564
School of the Environment						
Earth Sciences & Resources Institute	2	\$82,168	11	\$2,292,429	7	\$3,680,392
School of the Environment	3	\$155,913	23	\$2,755,235	14	\$2,125,515
Total :	5	\$238,081	34	\$5,047,664	21	\$5,805,907
South Carolina Honors College	0	\$0	2	\$79,482	4	\$155,939
Total :	0	\$0	2	\$79,482	4	\$155,939
University Libraries						
Libraries & Collections	0	\$0	0	\$0	2	\$7,350
Thomas Cooper Library	0	\$0	1	\$90,000	2	\$167,898
Total :	0	\$0	1	\$90,000	4	\$175,248
University Press	0	\$0	0	\$0	1	\$10,000
Total :	0	\$0	0	\$0	1	\$10,000
Vice President for Research						
EPSCoR	0	\$0	0	\$0	3	\$732,658
NanoCenter	0	\$0	29	\$8,603,767	0	\$0
Sponsored Programs & Research	0	\$0	1	\$60,000	0	\$0
Technology Incubator	0	\$0	1	\$12,000	0	\$0
Vice President for Research - General	1	\$1,999,484	1	\$1,999,484	1	\$2,000,000
Total :	1	\$1,999,484	32	\$10,675,251	4	\$2,732,658

DEPARTMENT	CURRENT MONTH APRIL - 2002		YEAR TO DATE FY 2002		YEAR TO DATE FY 2001	
Report TOTAL :	107	\$15,415,495	1241	\$139,523,609	1225	\$148,018,586

* - Biochemistry represents faculty with a dual appointment to the Department of Chemistry and the School of Medicine. The figures are included in both division totals but only once in the overall total.