



# Animal Care Matters

An IACUC and ARF Newsletter

From the IACUC Administrator

Elizabeth Thames

Animal Resources uses Harlan Teklad Rodent Diet. This diet is a complete and balanced diet designed to provide optimum nutrition to research rodents. It contains all known nutrients essential for growth, maintenance and reproduction. But what if your research requires something more? The TestDiet™ division of LabDiet® is a Purina Mills run operation. TestDiet can design the diet that is right for your needs.

Diets can be made into one of five forms— powder, pellets, tablets, liquid diet mixes, and gels. Each form has its advantages and disadvantages. For example, gels are great to use when shipping animals. They can also be useful if the animals being studied have dental problems. Pellets are the most common form of feed used at USC. If your research requires testing several different compounds, the pellets can be color-coded so there is no mix-up in diets.

Diets can be made to meet the nutritional requirement of the rodent being studied. Any standard LabDiet can be enhanced by adding ingredients or nutrients. Grain-based diets can be custom-formulated to fit the needs of your research. The grain-based diets are made from scratch using standard multi-nutrient ingredients normally used in these types of products. Substituting nutrient-specific ingredients can also be done. For example, milk casein could be used as a protein source instead of another ingredient.

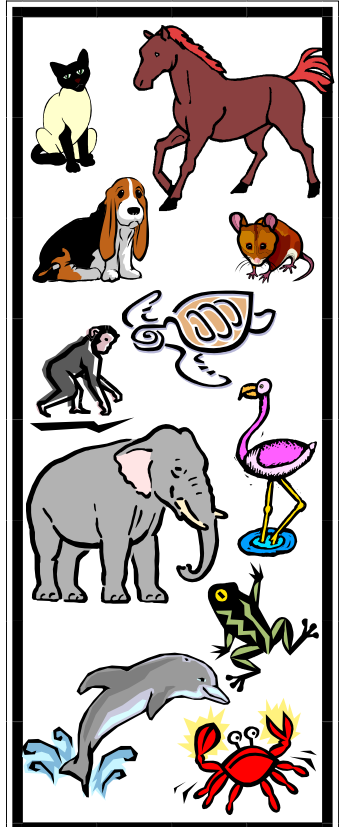
Test compounds as well as medications can be added to the diets. Any test compound whether it be a nutrient, chemical or medication can be added into a diet formula. The medication can be a new compound that is being tested or it can be a commonly used medication like doxycycline. If you would like more information on TestDiets, please visit their website at [www.TestDiet.com](http://www.TestDiet.com). Animal Resources is always happy to help find the best solution to your research needs.



Spring  
2005

## INSIDE THIS ISSUE:

From the Chair	2
...continued from page 3	2
Change in Per Diem Rates	3
IACUC Members	4
Meeting Schedule	4

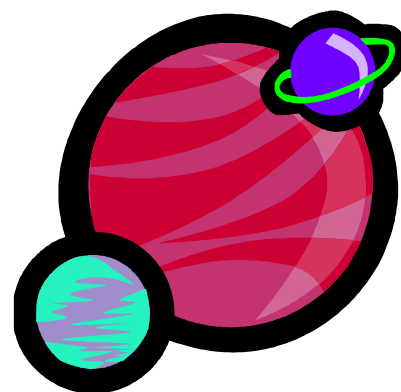


Periodically, we must update our Animal Use Proposals (AUPs) in order to meet changing federal regulations. The most current AUP is posted on the Animal Resource Facility's (ARF) website ( <http://uscm.med.sc.edu/ARF/forms.html>). Each time you need to submit an AUP or amendment, it is essential you download the current form from the website. The IACUC will no longer be able to accept AUPs or amendments on old forms. This will enable us to assure we are meeting all current federal requirements.

Lately there have been several questions from investigators about what is required by current federal regulations. Both the Office of Laboratory Welfare (OLAW (<http://grants.nih.gov/grants/olaw/>)) and the United States Department of Agriculture (USDA (<http://www.aphis.usda.gov/ac/index.html>)) have websites that contain a link to their respective regulations. These websites contain valuable information that you may need when writing your next grant proposal.

Some numbers that might be of some use to you are:

- USC's PHS/NIH Assurance No. A3049-01  
continued accreditation since 1984  
last accreditation November, 5 2003
- USDA Registration No. 56-R-003



### **... continued from page 3**

#### **Surgical Services Charges:**

Special Prep Requirements	\$11.03 Per animal
Induction of Anesthesia	\$11.03 Per animal
Surgical Facility Charge	\$16.54
Sterile Pack Prep	\$11.03 Per set up
Technician Assistance	\$16.54 Per hour
Surgeon/Participant Prep	
Sterile	\$5.51 Per person
Non-sterile	\$2.21 Per person
Immediate Post Op Care	\$16.54 Per hour
After Hours Post Op Care	\$26.05 Per hour
X Rays	\$11.58 Per X film
Animal Blood	\$7.88 Per tube

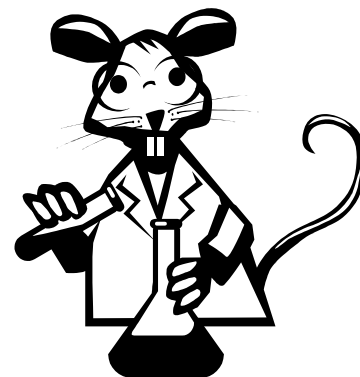
#### **Notes:**

Two exposures per X film pack

Other requested supplies are at cost (including tax) but are only available if requested ahead of time

**Feed**– If you require a non-standard diet for your research, ARF will purchase the diet for you and charge the purchasing cost to your account. For autoclaved feed, there will be a charge for the autoclaving process (fee=0.5 hours of technician time).

If you have any questions about these charges or if you don't see a procedure you are interested in using, please contact the Animal Resources' Office at 777-8106.



## Change in Per Diem Rates

Higher gas prices are the primary reason many companies are charging more for their products. Animal Resources is faced with higher prices on the products used to maintain the animal facilities. We have been notified feed and bedding prices are increasing again to cover the rising cost of gas. You may have already notice an increase in the cost of purchasing animals. Harlan is currently charging a \$3.00 fuel surcharge per order. Harlan will increase their fuel charge to \$6.00 when the next fiscal year starts (July). In addition, Animal Resources has received a memo from Charles River stating they too will charge a fuel surcharge. This surcharge was made effective April 25, 2005. It will be applied to the freight charges and will be based on the mode of transportation; 5% on truck delivery charges and 10% on air delivery charges.

To meet budget needs, the IACUC committee voted to approve a 5% increase in rates. This change will take effect July 1, 2005. If you have any questions about these changes, please call the ARF office at 777-8106. A chart of the FY'05 charges has been included here. Feel free to cut it out of the newsletter. This will be a valuable reference when it comes time to write your grant proposal.

### Fees Associated with Per Diem:

#### Per Diem:

Mouse	
Standard	\$0.45
Special	\$1.41
Peromyscus	\$0.41
Rat	
Standard	\$0.65
Special	\$0.97
Litter	\$0.65
Gerbil	\$0.45
Guinea Pig	\$0.69
Hamster	\$0.45
Rabbit	\$1.69
Pig	\$7.97
Sheep/Goat	\$7.02
Frog	\$0.65
Turtle	\$0.65
Pigeon	\$0.65

Chicken	\$1.66
Special:	
Quarantine	\$2.79
Biohazard	\$9.20

Notes: Per diem charges are per animal per day except mice and Peromyscus which are per cage per day. Quarantine and biohazard charges are per cubicle per day on top of standard per diem charge. Special charges for mice and rats include: daily cage changes that require extra handling (ex. Metabolic cages), autoclaving cages for non-quarantine/non-hazardous reasons, etc. For information on species not listed, please contact ARF.

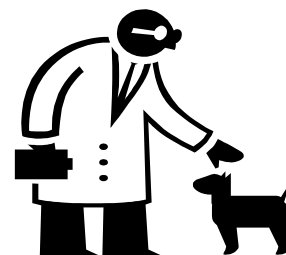
### Fees Associated with Purchasing:

Order Charge:	\$3.31
Disposal:	
Mouse	\$0.08
Peromyscus	\$0.08
Rat	
Standard	\$0.29
Litter	\$0.91
Gerbil	\$0.08
Guinea Pig	\$0.51
Hamster	\$0.08
Rabbit	\$2.81
Pig	\$28.07
Sheep/Goat	\$28.07
Frog	\$0.08
Turtle	\$1.41
Pigeon	\$0.29
Chicken	\$0.08

#### Special:

Pig Transport	\$134.01
Pig Conditioning	\$49.20

Notes: Disposal charges are a one time charge per animal charged when the animals are purchased. Pig conditioning charge includes first five days of per diem.



**ANIMAL CARE  
MATTERS****An IACUC and ARF  
Newsletter**

Animal Resource Facilities  
School of Medicine  
Graduate Science Research  
Center, Room 102  
Columbia, South Carolina 29208

Phone: 803-777-8106  
Fax: 803-777-2849  
E-mail: [elthames@gwm.sc.edu](mailto:elthames@gwm.sc.edu)

**We're on the Web !!**  
[http://uscm.med.sc.edu/  
ARF/index.htm](http://uscm.med.sc.edu/ARF/index.htm)

**Animal Care Matters** is published four times a year by the Institutional Animal Care and Use Committee (IACUC) and Animal Resource Facilities (ARF) of the University of South Carolina (USC).

The IACUC is an institutional body appointed by the USC President to oversee the program for the humane care and use of all vertebrate animals used for research, teaching, and training. Any investigator who intends to use laboratory animals must submit an Animal Use Proposal (AUP) to the IACUC for its review and approval.

The ARF provides care and maintenance of all animals used by investigators. Preventive care is provided through vendor animal health evaluations, quarantine programs, and sentinel animal diagnostics. Special care and services can be provided upon request.

Comments and submissions for **Animal Care Matters** are welcome and should be directed to Elizabeth Thames, IACUC Administrator, at 777-8106 or [elthames@gwm.sc.edu](mailto:elthames@gwm.sc.edu).

**IACUC Meetings  
2005**

Meeting Date	AUP Deadline
Jan 6	Dec 20
Feb 3	Jan 24
Mar 3	Feb 21
Apr 7	Mar 28
May 5	Apr 25
Jun 2	May 23
Jul 7	Jun 27
Aug 4	Jul 25
Sep 1	Aug 22
Oct 6	Sep 26
Nov 3	Oct 24
Dec 2	Nov 21

**IACUC MEMBERSHIP**

**CHAIRMAN**  
Ken Walsh, Ph.D.

**MEMBERS**  
Robert Beattie, D.V.M.  
Mark Davis, Ph.D.  
Charles Mactutus, Ph.D.  
Marj Peña, Ph.D.  
Margaret Rentz  
Tyrone Washington  
Britt Wilson, Ph.D.  
Marlene Wilson, Ph.D.  
Bao Ting Zhu, Ph.D.

**COMMUNITY MEMBERS**  
Janice Ayers  
Joe Hick, M.D.

**CONSULTANTS**  
Tommy Coggins  
Charles Jeffcoat